

FEATURES

- On command surface controlled triggering to set & retract anchor
- Stroker action when run in combination with EDPU
- Software GUI for easy visual operation
- Surface readout (SRO) of the motor voltage, motor current and elapsed time to provide a digital signature of the anchor set
- Quick change anchor block allows tool to be run in multiple different pipe sizes
- Emergency anchor release
- Perforating & Jar tolerant
- Idle mode to minimize power cell drain
- Runs in combination with RELAY DSL powered mechanical tools including EDPU & ESRT

WELL INTERVENTION

Elite downhole anchor tool

On command anchor tool for relay digital slickline powered mechanical operations

Overview

The Halliburton Elite Downhole Anchor Tool (EDAT) provides an on-command anchoring in varies pipe sizes and can be run in combination with the Elite Downhole Power Unit (EDPU) to provide a push & pull action that can be used to mechanically shift downhole valves, pull plugs & locks and many other applications

- Runs in combination with Elite Downhole Power Unit (EDPU) to offer high force push or pull action
- Pipe sizes 3½ inch, 4½ inch, 5½ inch, 7 inch and custom sizes for Crown plug pulls
- Multiple sets possible
- Surface readout (SRO) KPI data to confirm proper operation
- >60,000 lbs anchoring force
- Three large anchoring pads minimize force on the pipe to 1200 psi
- Anchor slip impression < 0.005 inch in soft J-55

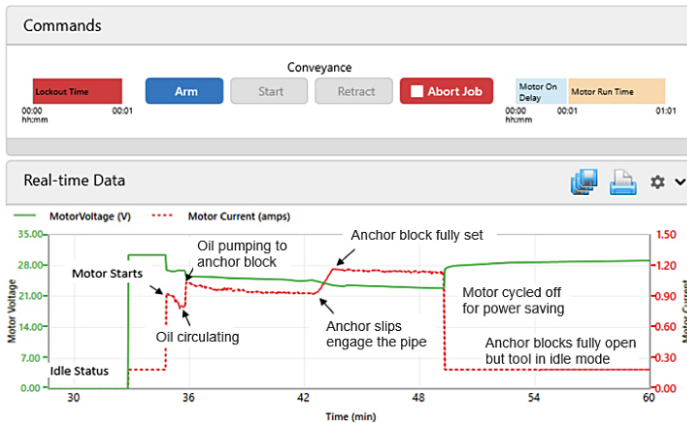
Benefits

- Optional non-dangerous goods power cell for easy transport
- Straight Pull Crown Plug that can't be pulled via jarring
- Mechanically shift in-situ fluid isolation or sliding side door (SSD) valves
- Pull shallow set plugs or locks that traditionally required hand jarring

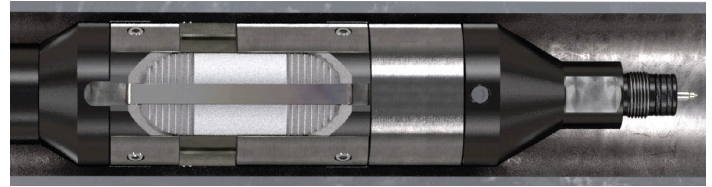


DATA SHEET

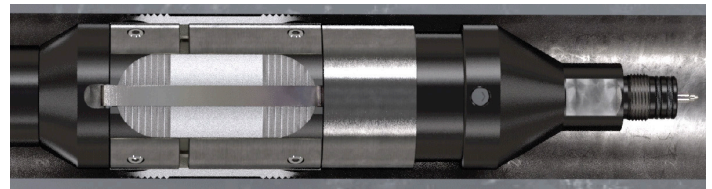
- Pull plugs and locks that have a high pressure differential
- Heavy duty fishing
- Break ceramic or glass isolation disks on new well completions
- Remove & replace high angle gas lift valves
- Remove & replace wireline deployable ESP assemblies
- Retraction of wireline retrievable plugs including EVO-Trieve® and high expansion HERO™



Surface readout EDAT digital signature plot during anchor set



Anchor module run in hole



Anchor module set

DOWNHOLE ANCHOR TOOL (EDAT) SPECIFICATIONS

Pipe Size	3.5 in.	4.5 in.	5.5 in.	6.625 in.	7.0 in.	>7 in.
Tool OD	2.5 in.	2.5 in.	2.5 in.	2.5 in.	2.5 in.	2.5 in.
Anchor Block OD	TBD	3.59 in 91.2 mm	4.25 in 108 mm	5.1 in 91.2 mm	5.375 in 136.5 mm	TBD
Min-Max Setting	TBD	3.7- 4.02 in. 94 -102.2mm	4.6- 4.8in 116.8 –121.9mm	5.5- 6.0in 139.7-152.4mm	5.6- 6.4in 124.2-162.6mm	TBD
Tool Length	107in 2718 mm	107in 2718 mm	107in 2718 mm	115in 2912 mm	120in 3048 mm	TBD
Pressure Rating	15,000 psi 103.4 MPa	15,000 psi 103.4 MPa	15,000 psi 103.4 MPa	15,000 psi 103.4 MPa	15,000 psi 103.4 MPa	15,000 psi 103.4 MPa
Temperature Rating	302°F 150°C	302°F 150°C	302°F 150°C	302°F 150°C	302°F 150°C	302°F 150°C

For more information, contact your local Halliburton representative or visit us on the web at www.halliburton.com

Sales of Halliburton products and services will be in accord solely with the terms and conditions contained in the contract between Halliburton and the customer that is applicable to the sale.

H013789 02/25 © 2025 Halliburton. All Rights Reserved.

halliburton.com

HALLIBURTON