

Frac Optimized Perforating Shaped Charges

PERFORATE WITH THE ORIGINAL CONSISTENT HOLE SIZE CHARGE DESIGNED FOR FRACTURING

ACHIEVING STRONG PERFORMANCE WITH MAXFORCE®-FRAC AND FRACJET RANGES OF PERFORATING CHARGES

The Halliburton portfolio of frac optimized shaped charges deliver superior consistent holes by providing reduced variance from shot to shot, regardless of fluid clearance and decentralization. Fracture initiation is dominated in the near-wellbore region by localized stress fields. Achieving consistent holes on both the upper and lower sides of the well ensures that the initial reservoir breakdown has the greatest chance of creating the most efficient, evenly distributed fractures.

FEATURES

- » Unparalleled experience backed by the industry-leading testing and research team at the Jet Research Center's (JRC's) Perforating Center of Excellence
- » Qualification testing to the most rigorous standard in the industry
- » Field-confirmed results, using downhole camera studies of actual onshore hydraulic fracturing wells in the U.S.

BENEFITS

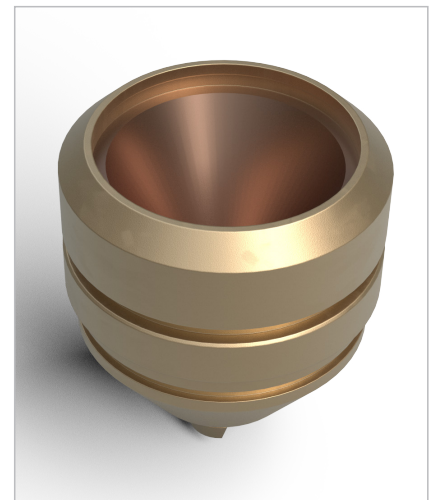
- » Improved fluid and proppant distribution
- » Increased likelihood of efficient fracture initiation
- » Reduced near-wellbore tortuosity
- » More effective diversion during stimulation
- » Greater stimulated reservoir volume

Charge Performance Verified by Operator's Downhole Camera Studies*

	Gun System	Casing	Dataset	Results (Average)
Horizontal Well, Permian Basin Downhole Camera Data	3 7/8-inch 6spf c/w 230 MaxForce®-FRAC RDX	5 1/2-inch 23ppf P-110 Casing	6x Clusters 36 Shots Total	EHD: 0.39 in. EHV: 5.5%
JRC "Barrel" Test Results			Cement-Backed Barrel Test 18 Shots Total	EHD: 0.40 in. EHV: 5.9%

* Downhole camera study data shown at bottom of the next page

**<2.4%
VARIANCE**
IN CASING
Entrance Hole



FracJET Perforating Charges

Gun Size (in.)	Charge Name	Explosive Load (g)	Explosive Type PN	Target Casing Specifications	EHD	EHV
3 3/8-inch 6spf 60°	FracJET 35	21	RDX-103002358	4 1/2-inch 13.5ppf P-110	0.37	7.1%
				5 1/2-inch 20ppf P-110	0.35	2.55%
				5 1/2-inch 23ppf P-110	0.35	3.37%
3 3/8-inch 6spf 60°	FracJET 36	21	HMX-103002357	5 1/2-inch 20ppf P-110	0.35	3.3%
				5 1/2-inch 23ppf P-110	0.36	5.3%
3 3/8-inch 6spf 60°	FracJET 39	21	PETN-102771488	4 1/2-inch 13.5ppf P-110	0.47	4.0%
				5 1/2-inch 23ppf P-110	0.39	10.8%
3 3/8-inch 6spf 60°	FracJET 39	21	PETN-102771488	5 1/2-inch 23ppf P-110	0.42	11.24%

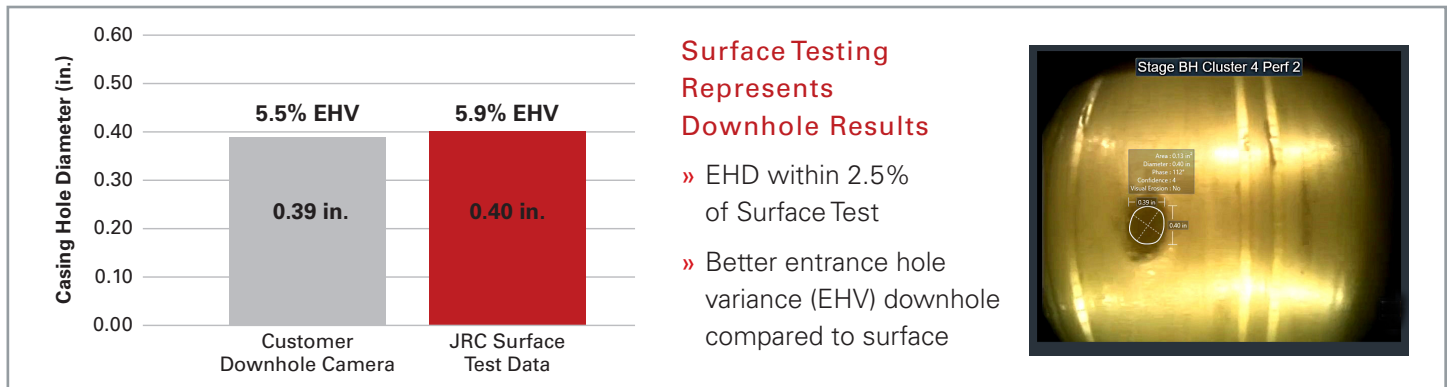
Available for select VELOCITY™ modular gun systems and conventional gun systems

MaxForce®-FRAC Perforating Charges

Gun Size (in.)	Charge Name	Explosive Load (g)	Explosive Type PN	Target Casing Specifications	EHD (in.)	EHV
2 3/4-inch 6spf 60°	150 MaxForce®-FRAC	15	RDX-102745134	4 1/2-inch 13.5ppf P-110	0.35	2.4%
			HMX-102740045	4 1/2-inch 13.5ppf P-110	0.35	2.4%
3 3/8-inch 6spf 60°	230 MaxForce®-FRAC	23	RDX-102736069	4 1/2-inch 13.5ppf P-110	0.41	2.3%
			HMX-102732983	4 1/2-inch 13.5ppf P-110	0.42	3.0%
	210 MaxForce®-FRAC	21	RDX-102045430	4 1/2-inch 11.7 L-80	0.46	4.7%
			HMX-102127122	4 1/2-inch 11.7 L-80	0.49	5.8%
3 3/8-inch 6spf 60°	230 MaxForce®-FRAC	23	RDX-102736069	5 1/2-inch 23ppf P-110	0.40	3.5%
			HMX-102732983	5 1/2-inch 23ppf P-110	0.40	4.3%
	210 MaxForce®-FRAC	21	RDX-102045430	5 1/2-inch 17ppf L-80	0.43	13.1%
			HMX-102127122	5 1/2-inch 17ppf L-80	0.45	11.7%

Available for select VELOCITY™ modular gun systems and conventional gun systems

Downhole Camera Study*



For more information, contact your local Halliburton representative or visit us on the web at www.halliburton.com

Sales of Halliburton products and services will be in accord solely with the terms and conditions contained in the contract between Halliburton and the customer that is applicable to the sale.

H012794 WP 03/21 © 2021 Halliburton. All Rights Reserved.