

Wall Application

# Adhesives Guide

Enclosed are step-by-step instructions to help clients and installers understand the field processes for adhering turf products to walls.

Refer to cut sheets for product specific installation information and requirements.



# Adhesive Recommendations

## Adhesive By Turf

3M Adhesive

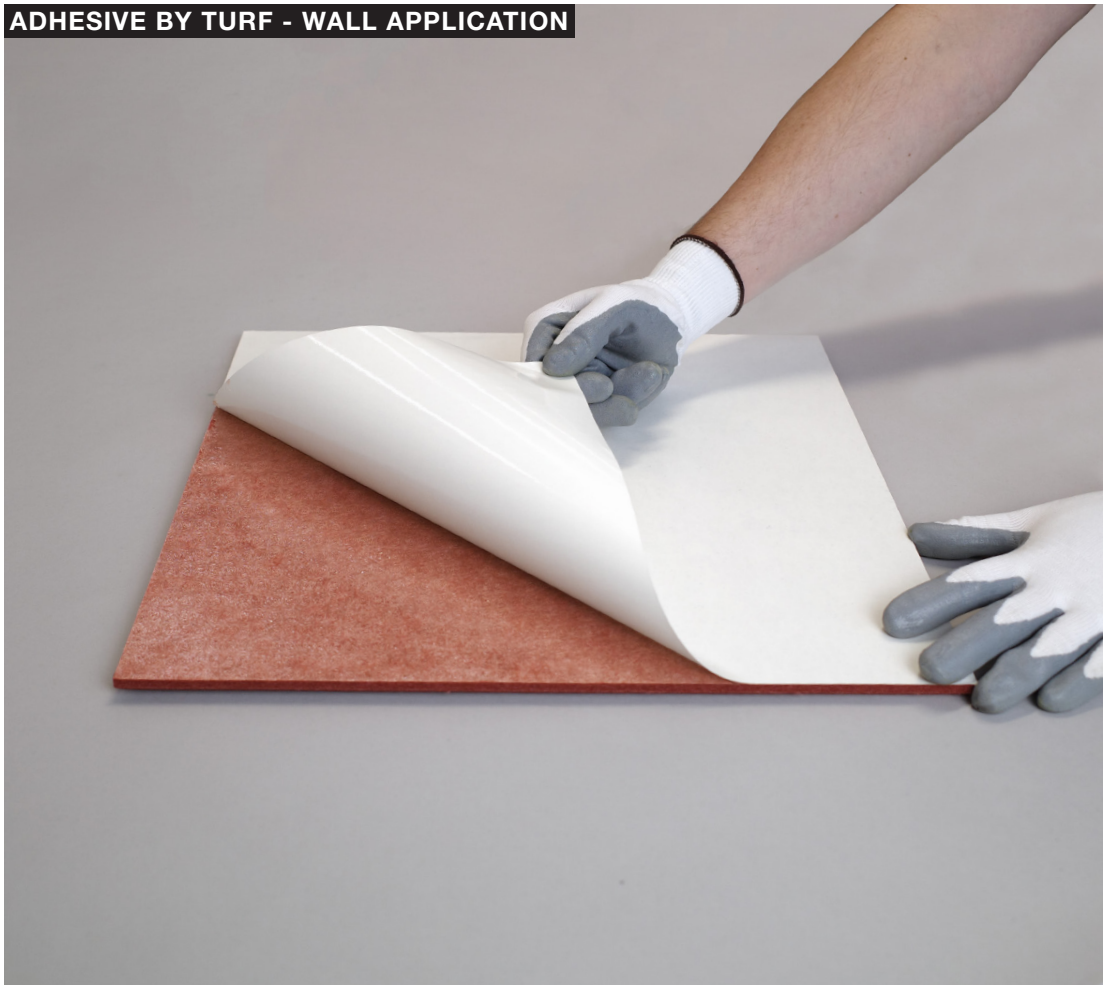
Some products can be ordered with adhesive applied by Turf, making them a quick peel and stick installation.

Heavier products may require Adhesive By Others. Consult product specific cut sheet for detailed information.

## Adhesive By Others

Turf recommends using Loctite PL Premium Fast Grab or Liquid Nails LN-710

These products will adhere panels & tiles to most surfaces. Always refer to manufacturer instructions before proceeding with installation.



ADHESIVE BY TURF - WALL APPLICATION

SEE PAGE 3



ADHESIVE BY OTHERS - WALL APPLICATION

SEE PAGE 4



# Adhesive By Turf - Wall Application

**Work Time** Instant bond, pressure activated

**Cure Time** Typically 48-72 hours. Consult 3M manufacturer instructions.

## Application

**Instructions** The following instructions are for a standard 12" x 12" 9mm tile. Level 4 drywall finished required.

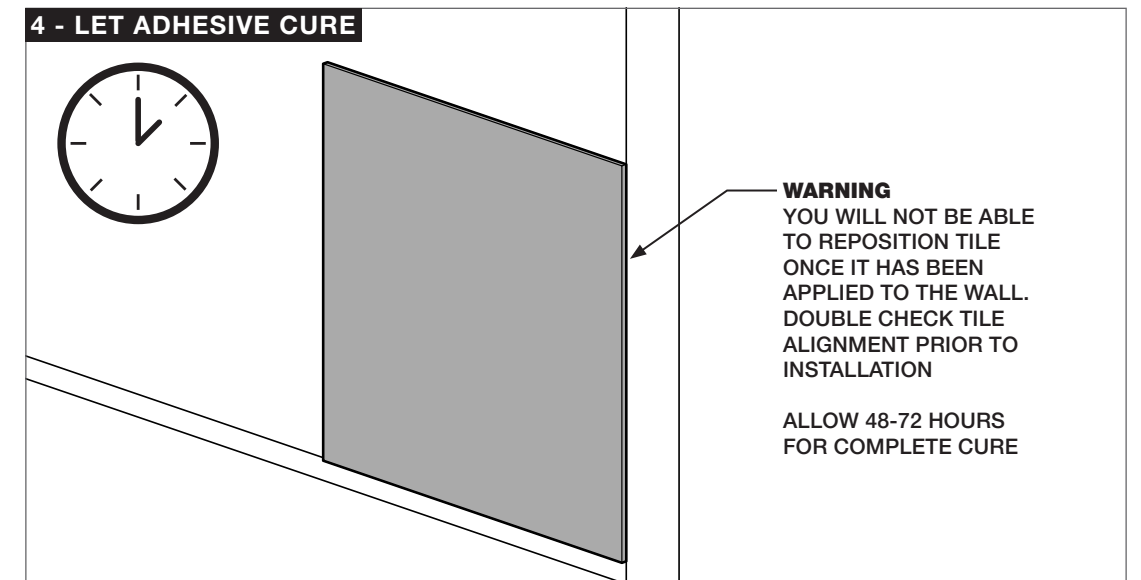
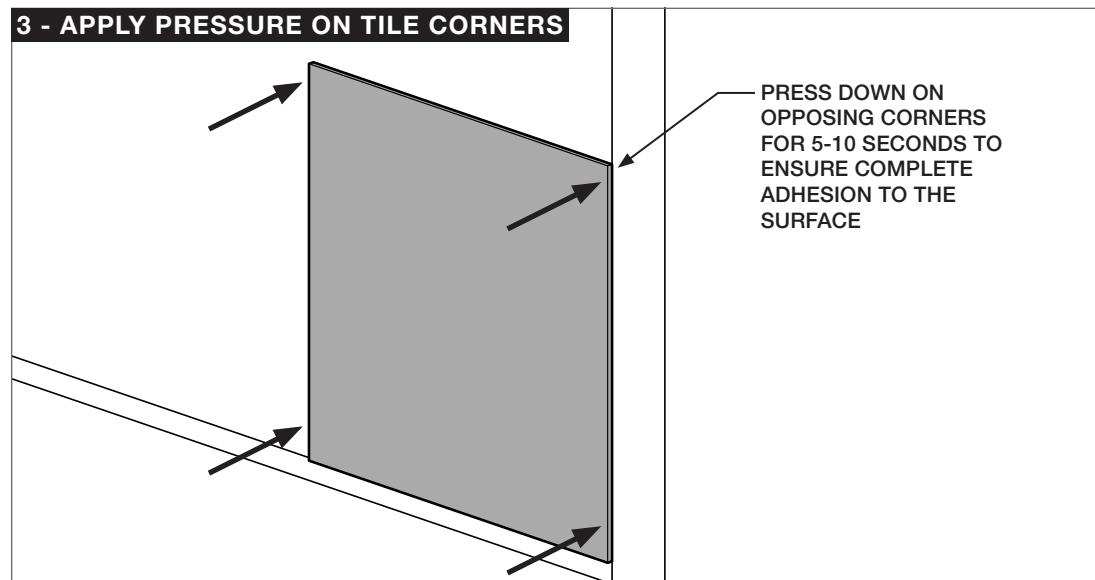
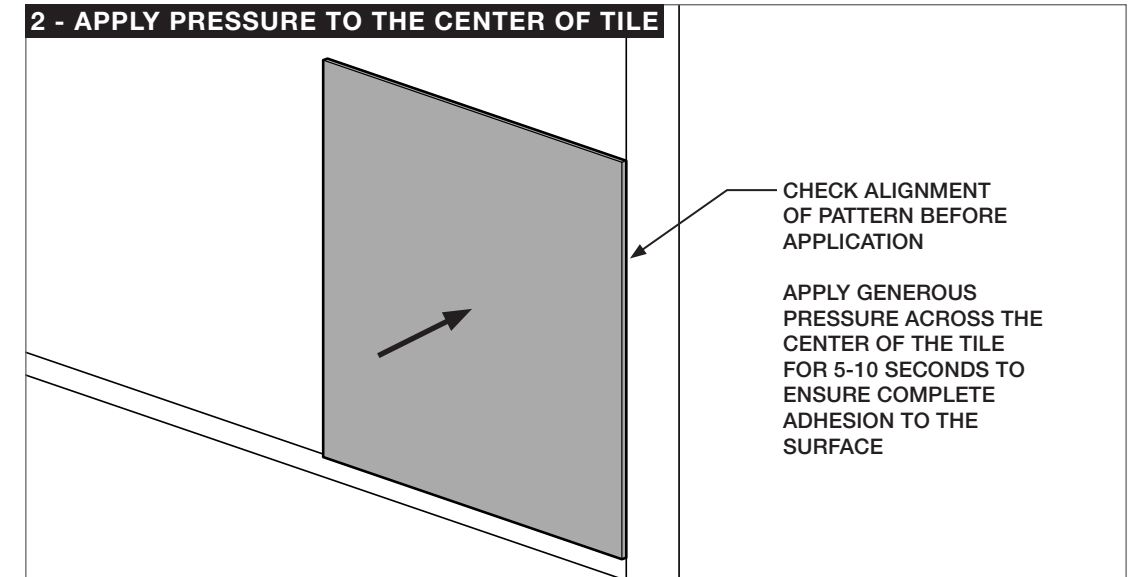
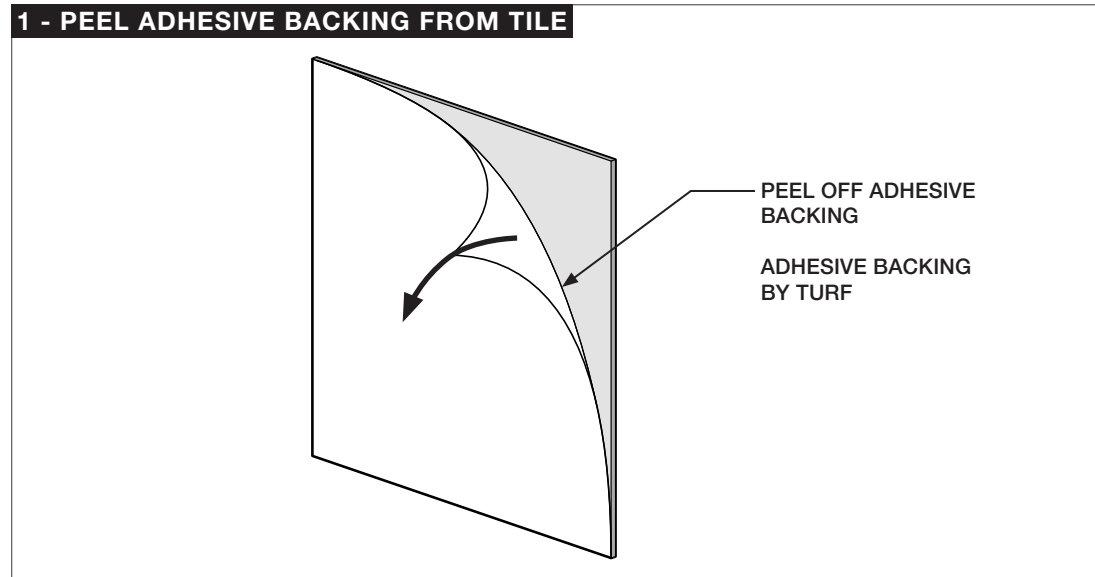
**Precaution** Please reach out to our design team with project-specific questions.

We recommend installers use latex or neoprene gloves during installation to avoid contaminating the surface with debris.

## Tools Required



LATEX OR NEOPRENE GLOVES



# Adhesive By Others - Wall Application

**Work Time** 20 Minutes

**Cure Time** Typically 24-48 hours. Consult Liquid Nails or Loctite manufacturer instructions.

## Application

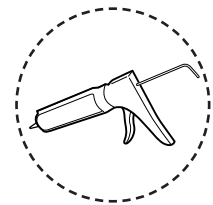
**Instructions** The following instructions are for a standard 12" x 12" 9mm tile. Level 3 drywall finished required.

**Precaution** Please reach out to our design team with project-specific questions.

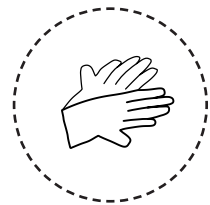
**Precaution** We recommend installers use latex or neoprene gloves during installation to avoid contaminating the surface with debris.

**Adhesive Color** Please be aware, light colored products require clear adhesives so that adhesive color does not show through the material.

## Tools Required



CONSTRUCTION ADHESIVE



LATEX OR NEOPRENE GLOVES

