

TIMBER ceiling baffle

Go with the Grain

Timber combines the benefit of high performance acoustics with the option to apply printed wood grain textures on felt. The clean construction of each baffle allows you to design sculptural forms, both simple and complex, with the enhancement of a digital wood grain. Fully customizable, Timber offers a range of forms designed to complement your space.

PATENT PENDING



SPECS

PRODUCT

Timber ceiling baffle

CONTENT

Polyester (PET) felt
60% pre-consumer recycled

SIZING

Custom is TURF's standard.
Everything is made to order, and
can be adapted to fit unique
spaces.

LENGTH

SMALL RANGE

12" L to 35.5 L

MEDIUM RANGE

36" L to 71.5" L

LARGE RANGE

72" L to 119" L

DEPTH

STANDARD DEPTHS

- 7.5" D
- 9.375" D
- 11.5" D

Custom depths available upon
request.

THICKNESS

18 mm baffle

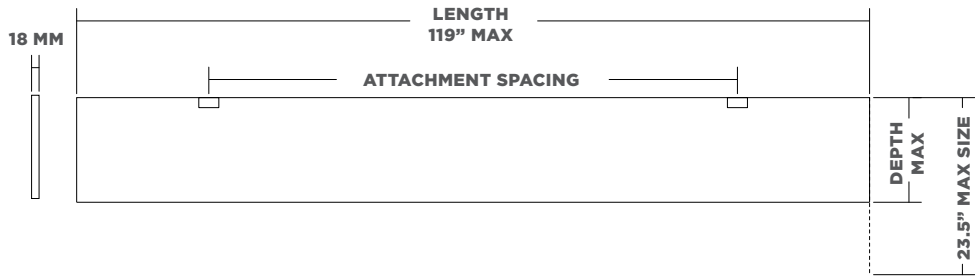
SPACING

The connection spacing on Timber
baffles varies per project needs.

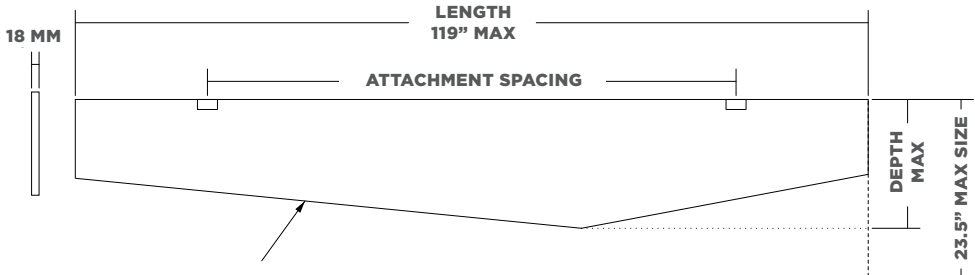
Typical O.C. spacing is 6" to 12"

The closer together baffles are, the
better the acoustic performance.
Minimum O.C. spacing is 1.5"

TIMBER CLASSIC

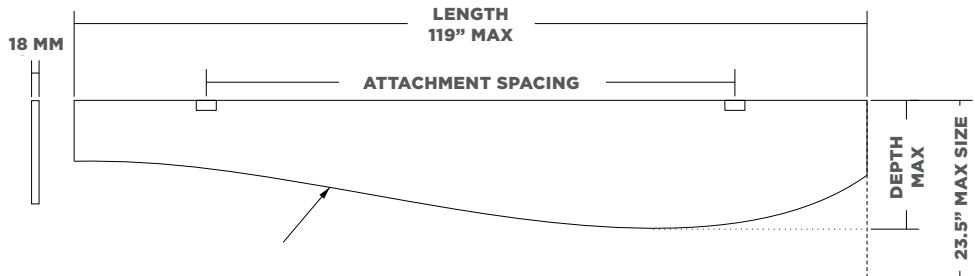


TIMBER GEOMETRIC

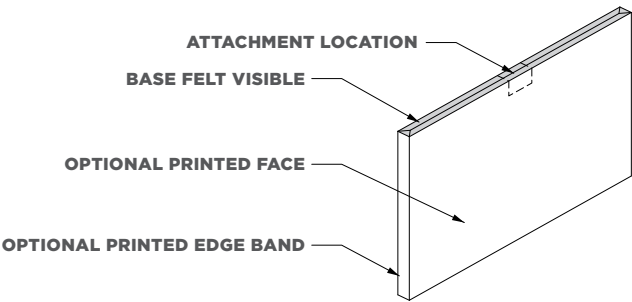


THE CUSTOM PROFILE
IS SPECIFIED BY THE
ARCHITECT

TIMBER ORGANIC



THE CUSTOM PROFILE
IS SPECIFIED BY THE
ARCHITECT



CONNECTIONS

TURF has numerous connection systems designed to accommodate the most efficient installation method for each project:

MOST COMMON

- Feltlock
- Gridlock
- Cable to Deck

ALSO AVAILABLE

- Rotated Feltlock
- Cable to Unistrut
- All Thread

FELTLOCK

Baffles with TURF's patented Feltlock will flex and compress to insert into unistrut, the industry's most universal installation hardware.

P1000 series unistrut is required for Feltlock baffles. Approved finish options are raw galvanized or powder-coated. Painted unistrut may damage Feltlock connection details and will void the product warranty.

GRIDLOCK

Baffles with Gridlock have a custom cut attachment that flexes to grasp the t-grid.

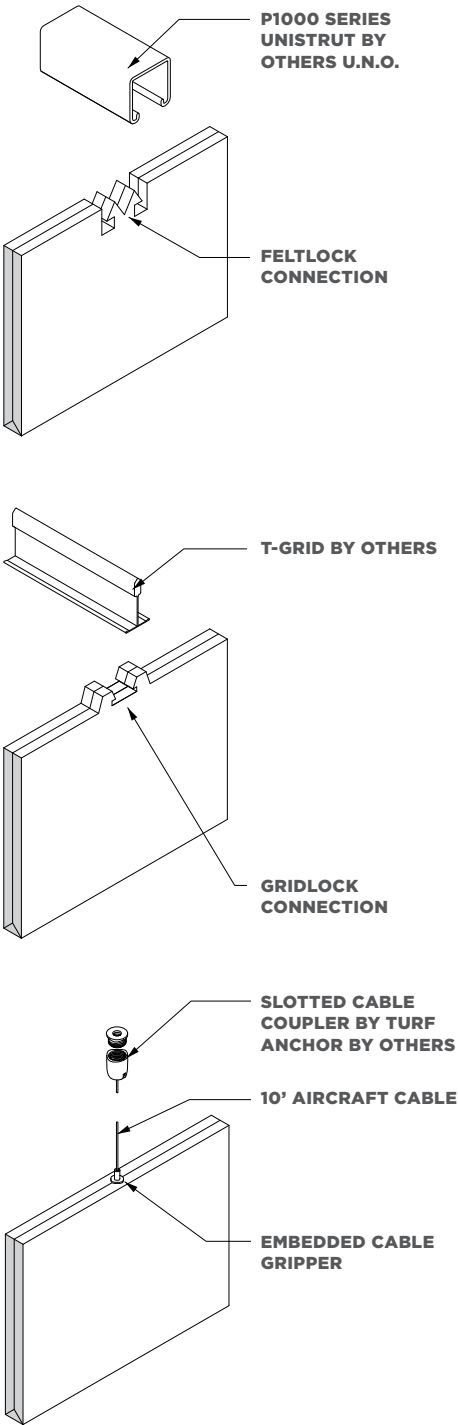
9/16" or 15/16" flat t-grid in a 2'x2' or 2'x4' layout required.

CABLE TO DECK

Embedded cable grippers mount via suspended aircraft cables. Because the cables can be arranged in any pattern, this connection offers the most design flexibility.

3/64" aircraft cable and coupler to deck supplied by TURF.

BAFFLE LENGTH	CONNECTION SPACING
18" to 30"	12" OC
30" to 54"	24" OC
54" to 95"	48" OC
95" to 119"	60" OC



9MM FELT

This product is made with 9 mm PET felt board. The process used to create PET felt often results in a heathered effect where multiple tones are present. Slight variations in color should be expected when using this sustainable material.

Felt thickness is 9 mm +/- 0.5 mm.

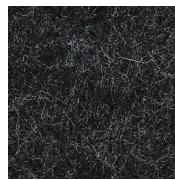
Monitors and printers vary. Please request a material sample to verify felt colors.

Looking for the old color palette?

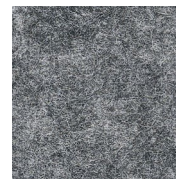
Old colors are still available for legacy projects, but check with us for availability if you're interested in using them for new projects.



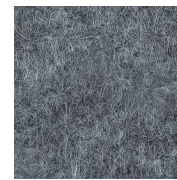
07 BLACK



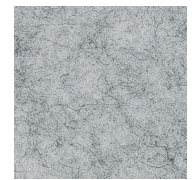
06 CHARCOAL



09 DAMASCUS



98 STORM



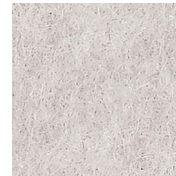
04 LIGHT GREY



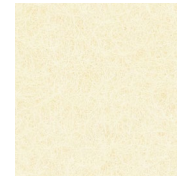
66 PEWTER



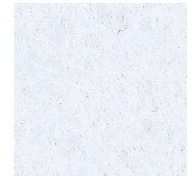
50 IVORY



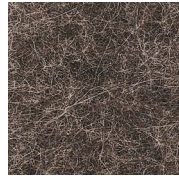
01 CREAM



33 LUMINARY



05 WHITE



35 BARK



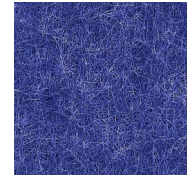
34 TONAL TAUPE



82 BARLEY



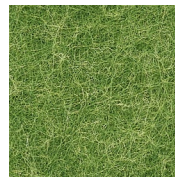
83 HOLLAND OATS



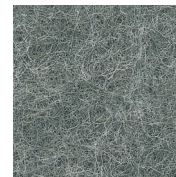
24 ROYAL BLUE



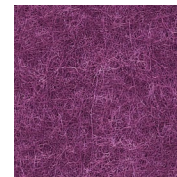
10 TOPO GREEN



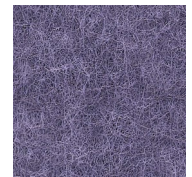
12 GRASSHOPPER



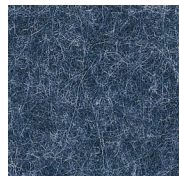
11 CELADON



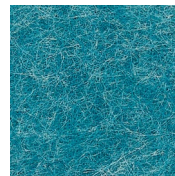
40 MAGENTA



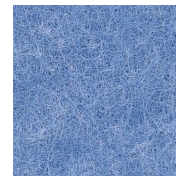
41 DRIED LAVENDER



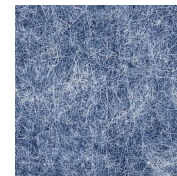
28 INDIGO



30 CYAN



31 AZURE



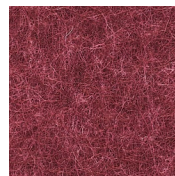
27 JEAN JACKET



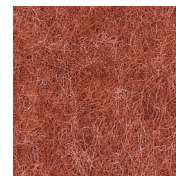
26 FADED DENIM



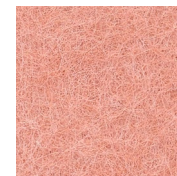
23 RED



15 MERLOT



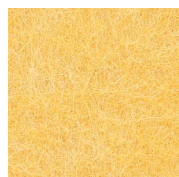
18 ULTISOL



17 BLUSH



43 ORANGE CRUSH



63 SAFFLOWER



64 PLANTAIN

TEXTURES

Invite nature into your space with our wood-inspired textures. Digital printing on felt ensures a unique and realistic grain with virtually no repeats.

*** There is an additional product cost for Wood Textures**

CUSTOM

Endless customization options are available, including color and grain matching to your sample.

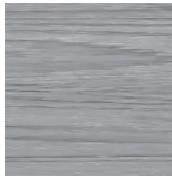
*** Please note there is additional lead time for custom matching. Texture and customization will incur additional costs beyond our standard 9 mm options.**

Felt thickness is 9 mm +/- 0.5 mm.

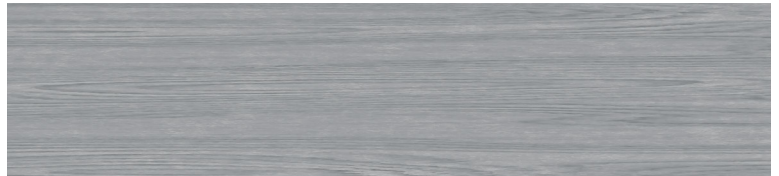
Monitors and printers vary. Please request a material sample to verify felt colors.



D01 WHITE ASH



D02 SILVER TEAK



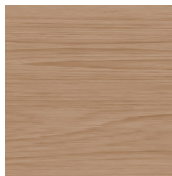
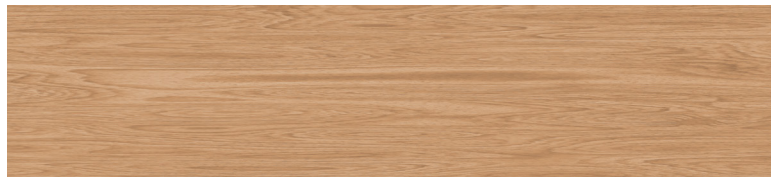
D03 CLEAR MAPLE



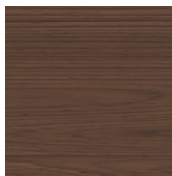
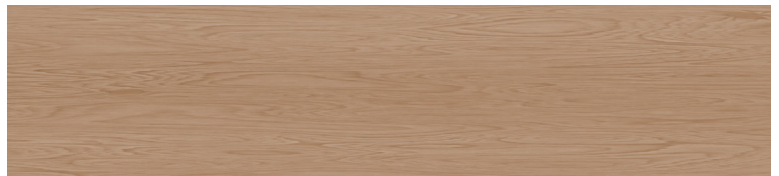
D04 WASHED ASH



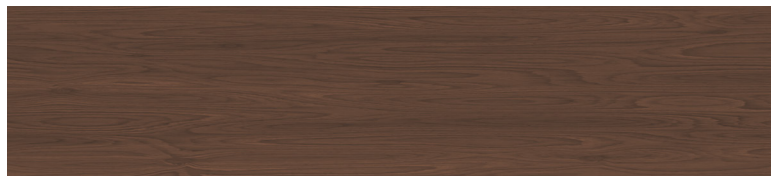
D05 MEDIUM OAK



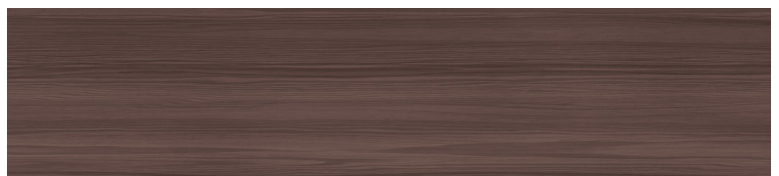
D06 PLANKED OAK



D07 DARK WALNUT



D08 BLACK PEAR



TECH

ACOUSTICS

ASTM C423-17: Type J Mounting

FIRE RATING

ASTM E-84 - Class A

VOC

ASTM D5116 Compliant

DETAILS

DURABILITY

Contract

LEAD TIME

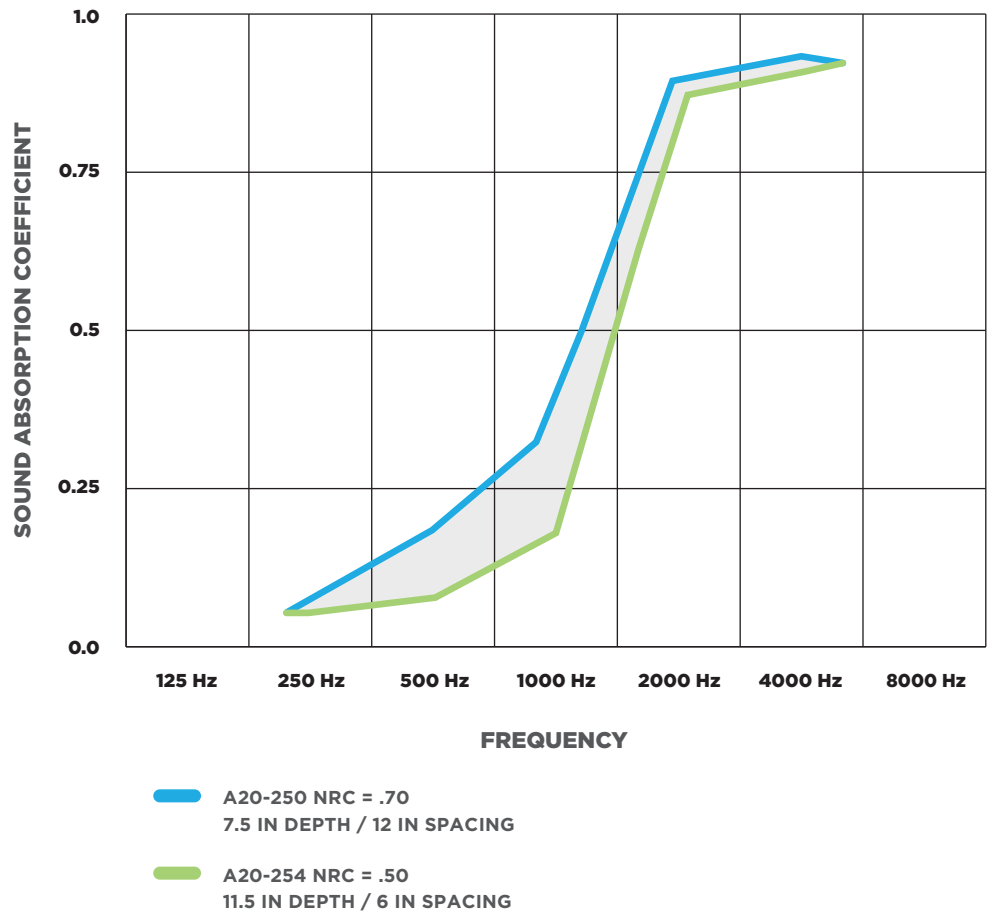
Check the Turf website for current lead times.

WARRANTY

Three (3) years

MAINTENANCE

Vacuum to remove any particulate matter and air-borne debris or dust. Compressed air can be used to dust the material in difficult to reach areas for large assemblies. Contact us for more information relative to spot cleaning.



ASTM C 423-17: Type J Mounting: The specimen is an array of 10 spaced sound absorbing baffles suspended from cables such that the closest face of the baffles is located approximately 1320.8 mm (52 in.) from the horizontal test surface. This approximates the mounting method of a typical ceiling baffle installation. The baffles were evenly distributed in a single row. On-center spacing was evaluated at 152.4mm (6in.), 203.2 mm (8 in.), and 304.8 mm (12 in.) apart.

