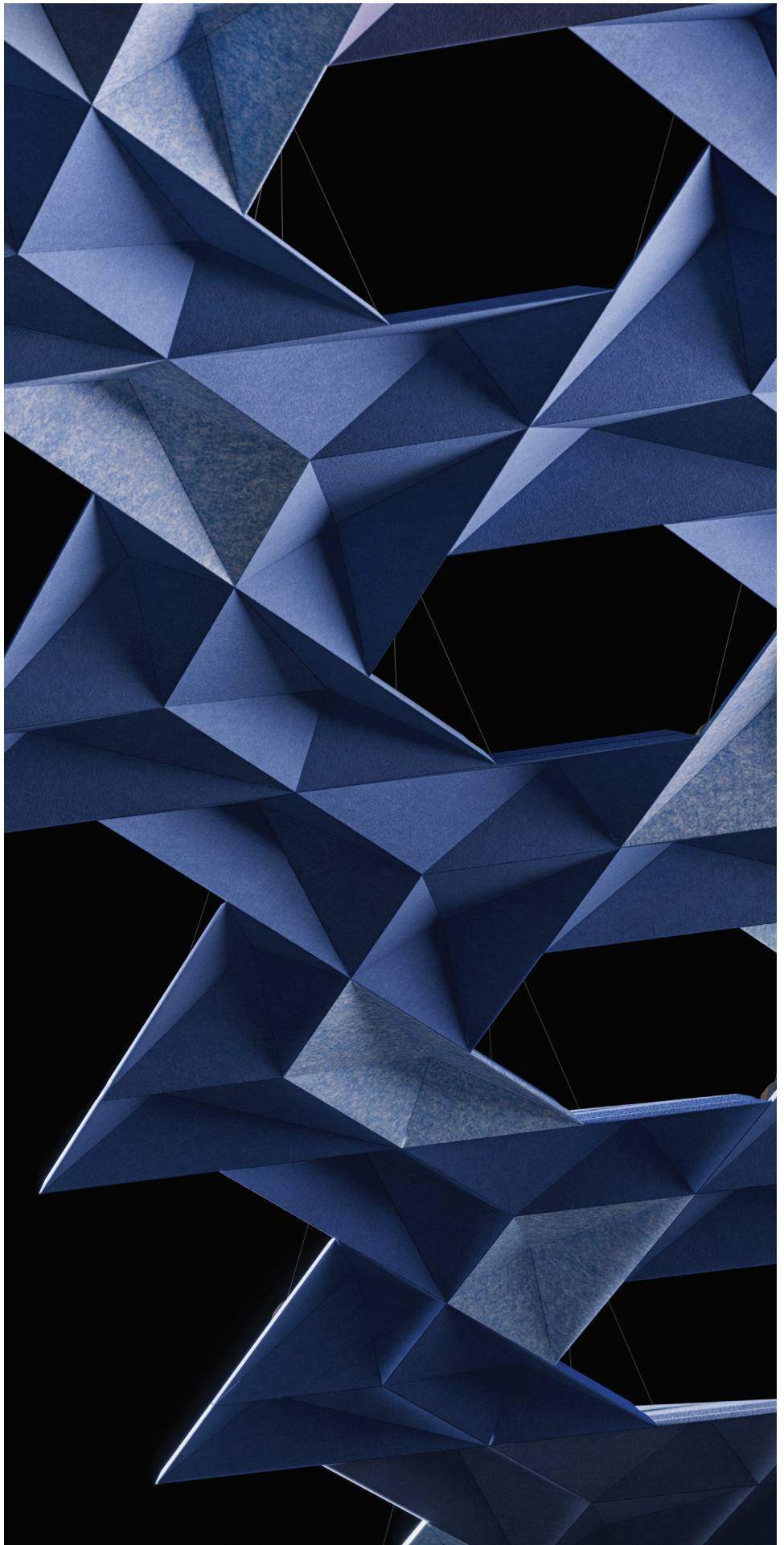


FRACTAL modular cloud

Iterative & Ingenious

Fractal is an elegant cloud system that fills the ceiling with dynamic tessellations. Each triangular module is faceted, building a powerful aesthetic with visual depth. This system can be organized as a seamless whole, punctuated with openings, or grouped in clusters.

PATENT PENDING



SPECS

PRODUCT

Fractal ceiling cloud

CONTENT

Polyester (PET) felt
60% pre-consumer recycled

SIZING

Fractal is a modular cloud with a predefined size. Use multiple modules to create customizable arrangements.

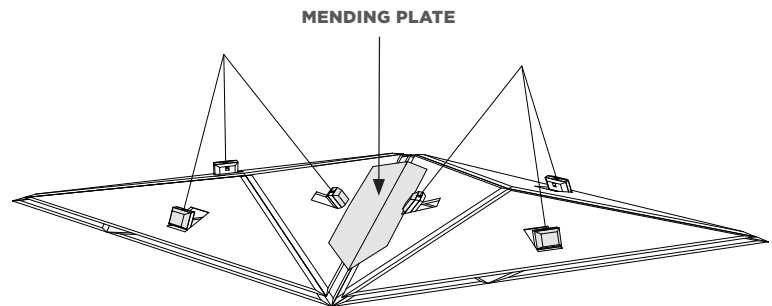
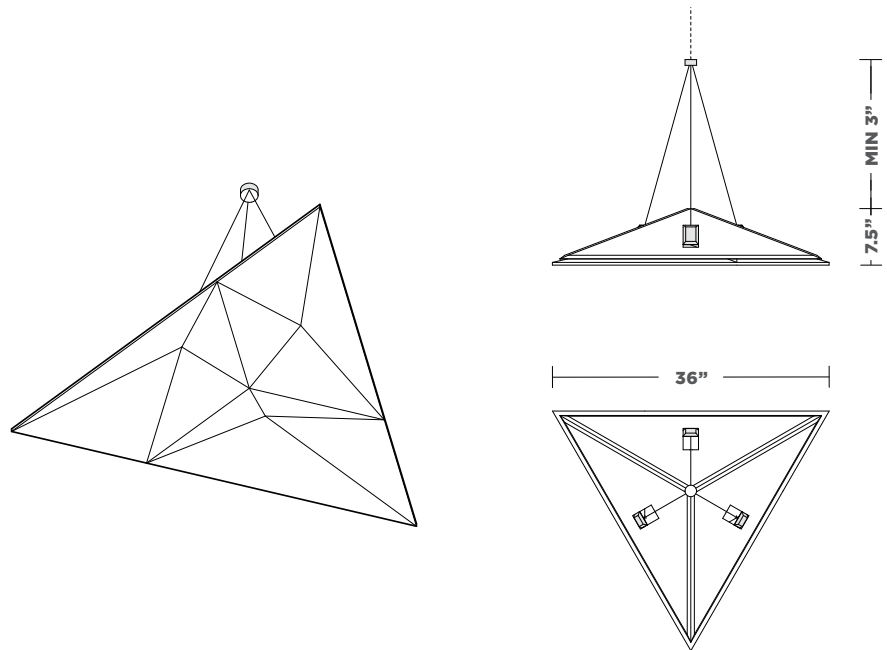
DIMENSIONS

SIDE LENGTH

36" L

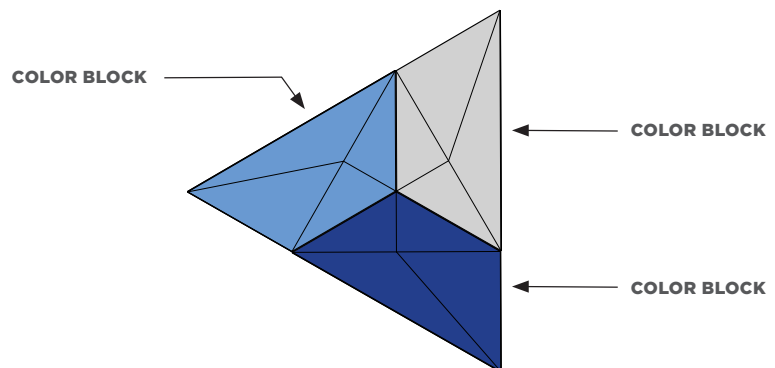
DEPTH

7.5"



COLOR BLOCKS

Each Fractal module contains three distinct color blocks. Up to three colors can be specified for each module.



CONNECTIONS

The connection spacing for each module depends on the arrangement and varies per project needs.

THREADED ROD

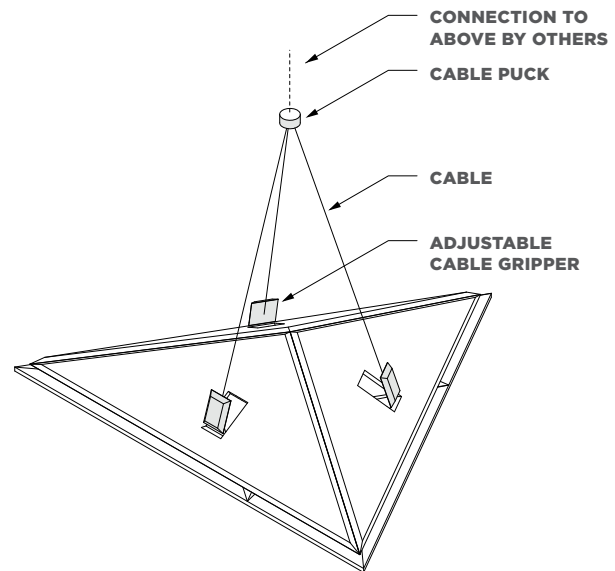
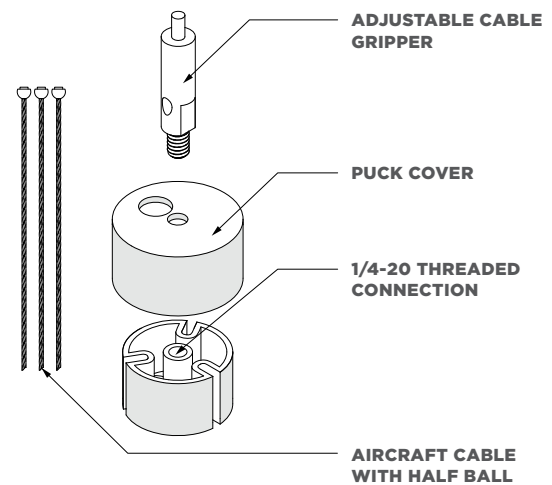
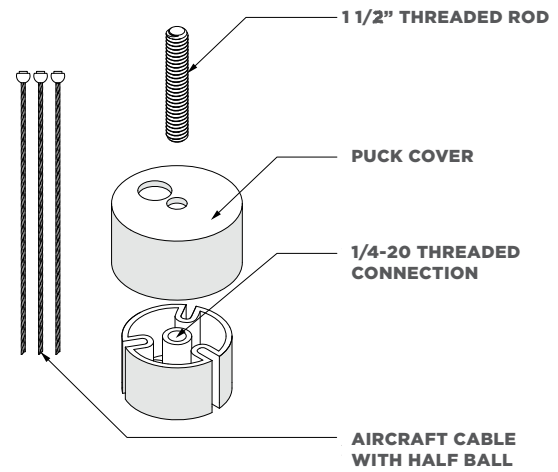
Individual modules are supplied with a 1 1/2" threaded rod with 1/4"-20 gauge thread which connects to the cable puck.

Coupling nut and additional rod lengths provided by installer.

CABLE TO DECK

Embedded cable grippers mount via suspended aircraft cables and connect to a puck for each module.

3/64" aircraft cable supplied by TURF.



9MM FELT

This product is made with 9 mm PET felt board. The process used to create PET felt often results in a heathered effect where multiple tones are present. Slight variations in color should be expected when using this sustainable material.

Felt thickness is 9 mm +/- 0.5 mm.

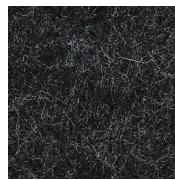
Monitors and printers vary. Please request a material sample to verify felt colors.

Looking for the old color palette?

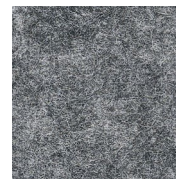
Old colors are still available for legacy projects, but check with us for availability if you're interested in using them for new projects.



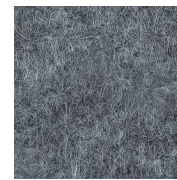
07 BLACK



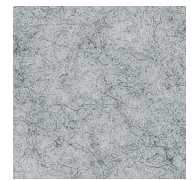
06 CHARCOAL



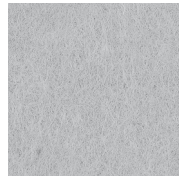
09 DAMASCUS



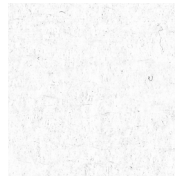
98 STORM



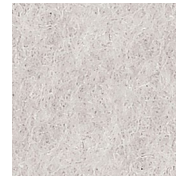
04 LIGHT GREY



66 PEWTER



50 IVORY



01 CREAM



33 LUMINARY



05 WHITE



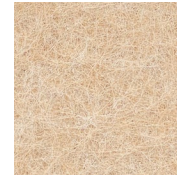
35 BARK



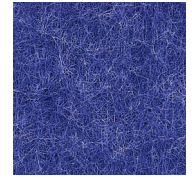
34 TONAL TAUPE



82 BARLEY



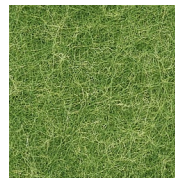
83 HOLLAND OATS



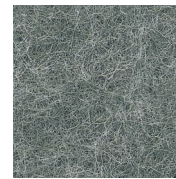
24 ROYAL BLUE



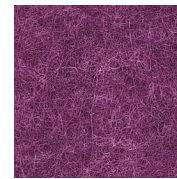
10 TOPO GREEN



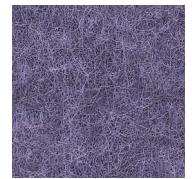
12 GRASSHOPPER



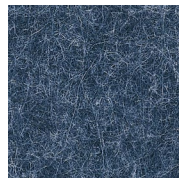
11 CELADON



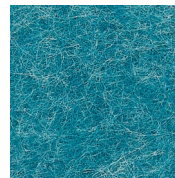
40 MAGENTA



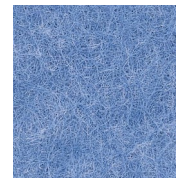
41 DRIED LAVENDER



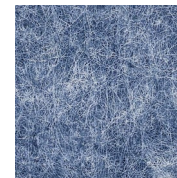
28 INDIGO



30 CYAN



31 AZURE



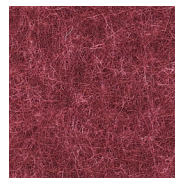
27 JEAN JACKET



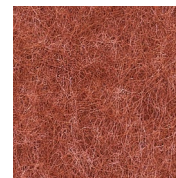
26 FADED DENIM



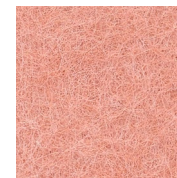
23 RED



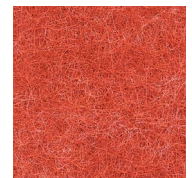
15 MERLOT



18 ULTISOL



17 BLUSH



43 ORANGE CRUSH



63 SAFFLOWER



64 PLANTAIN

TEXTURES

STONE

Inspired by nature, designed for felt. Our digitally printed Stone Textures capture the character and nuance of stone on top of a curated color collection from our Hues palette with virtually no repeats. The three patterns in this family each capture unique elements from the stones for which they are named.

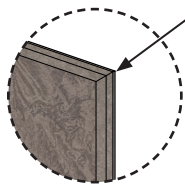
There is an additional product cost for Stone Textures.

Turf has curated this collection to include only the best pattern and color combinations.

Felt thickness is 9 mm +/- 0.5 mm.

Monitors and printers vary. Please request a material sample to verify felt colors.

Texture Edge Detail



Please note, all cut edges will reveal the base color of the felt if using 9mm Stone Texture.

ST34 Granite used as an example above.



TECH

ACOUSTICS

ASTM C423-17: Type J Mounting

FIRE RATING

ASTM E-84 - Class A

VOC

ASTM D5116 Compliant

DETAILS

DURABILITY

Contract

LEAD TIME

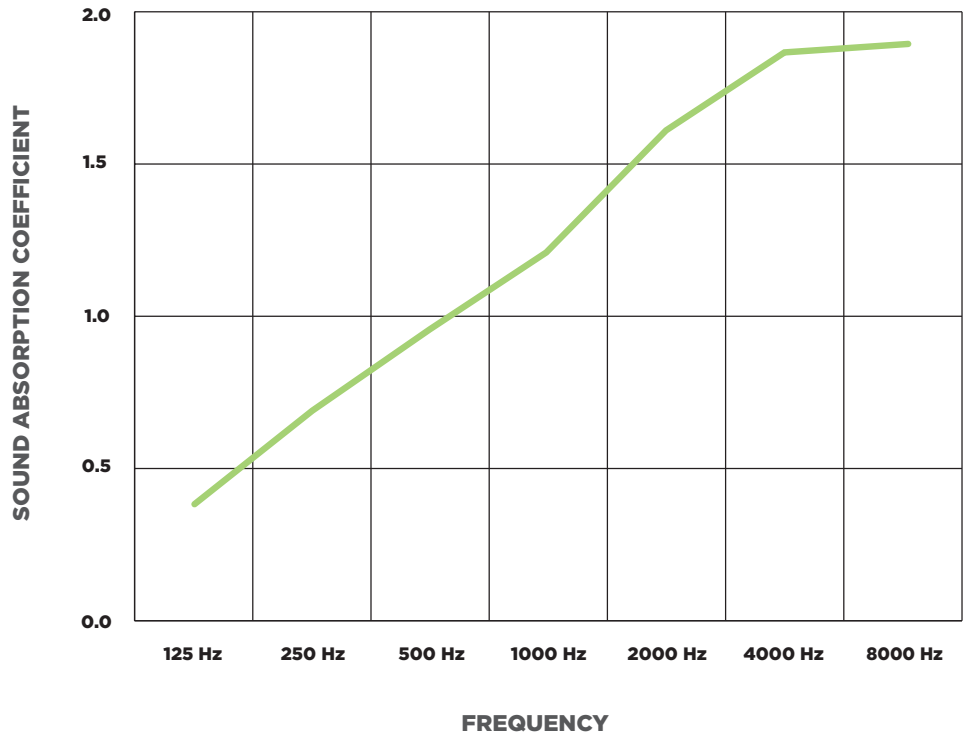
Check the Turf website for current lead times.

WARRANTY

Three (3) years

MAINTENANCE

Vacuum to remove any particulate matter and air-borne debris or dust. Compressed air can be used to dust the material in difficult to reach areas for large assemblies. Contact us for more information relative to spot cleaning.



— NRC = 1.15

ASTM C 423-17: Type J Mounting - The specimen is an array of 12 sound absorbing fixtures suspended over an array of cables such that the closest face of the fixtures is located approximately 1473.2 mm (58 in.) from the horizontal test surface. This approximates the mounting method of a typical ceiling baffle installation. The tiles were arranged in a single cloud, with no spacing between the edges of adjacent tiles.

