

Acoustic Ceiling Baffle

Slab

Elevating iconic forms

Elevating an iconic form, Slab helps your ceiling find its higher purpose. Celebrated for its efficiency, this minimalist modern baffle system and acoustic overachiever installs in seconds.



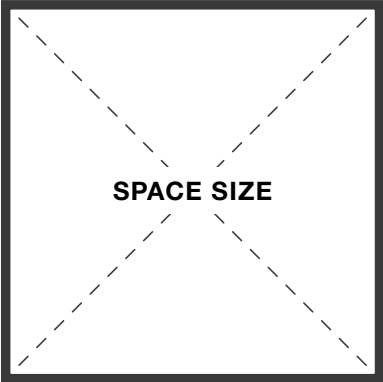
Photograph by Jeffrey Totaro

How To Specify

Key Information

Slab can fill your space in a variety of ways. Consider these questions as you design your layout.

1




SPACE SIZE

What are the dimensions of the space?

PAGE 3

2

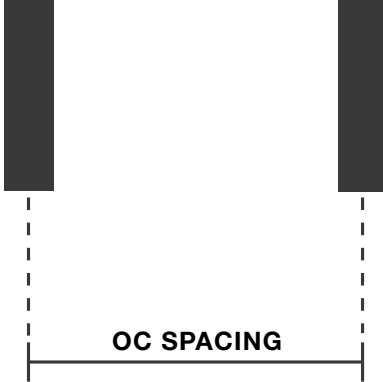


SLAB DEPTH

What baffle depth do you need?

PAGE 4

3

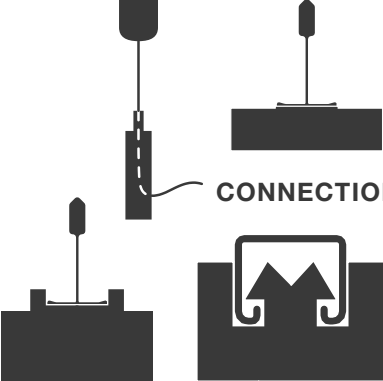


OC SPACING

What is the on center spacing?

PAGE 4

4




CONNECTION

How will Slab mount to the ceiling?

PAGE 8-9

5



COLOR

What is the color or texture?

PAGE 8-9

Dimensions

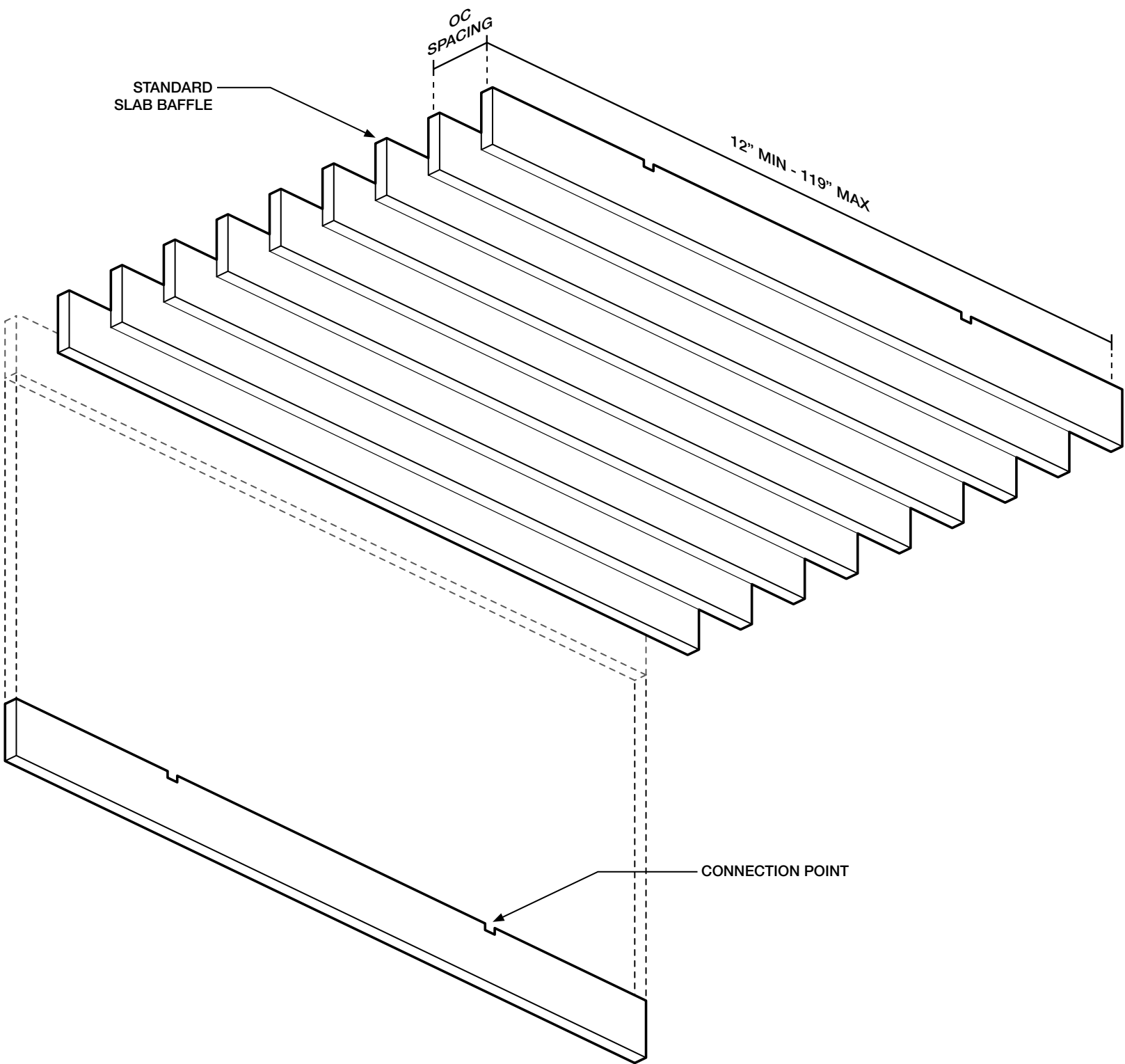
Standard Slab	2.25"W x 8.68"D
MicroSlab	2.25"W x 4.73"D
Variable Length	12"L Min - 119"L Max
Small Range	12" ≤ L < 36"
Medium Range	36" ≤ L < 72"
Large Range	72" ≤ L ≤ 119"
Variable Depth	Custom depth for Slab available upon request.

Recommended Connection Options

P1000T Unistrut	Feltlock
9/16" or 15/16" Tee Grid	Gridlock
Cable Hung	Cable To Deck
Magnetic	Exposed Magnet
	See our Recommended & Alternative Connections pages for more Connection options.

Color

9mm Palette	Slab can be specified in any of our 9mm felt colors or textures.
Color Match	Have another color in mind? Our UV printing process can match almost any hue.



ALL DIMENSIONS NOMINAL UNLESS NOTED OTHERWISE



Recommended Connections

Connection Spacing

60" OC Max

Spacing varies per project. Baffles require a minimum of two connection points.

Feltlock

Products with Turf's patented Feltlock flex and compress to insert into Unistrut.

P1000T Unistrut, raw galvanized finish or powder-coated, hardware is required.

Painted unistrut may damage Feltlock installations and will void the product warranty.

Cable To Deck

Baffles with embedded cable grippers snap into deck-mounted aircraft cables.

10' aircraft cable supplied by Turf should be trimmed in the field as needed.

Gridlock

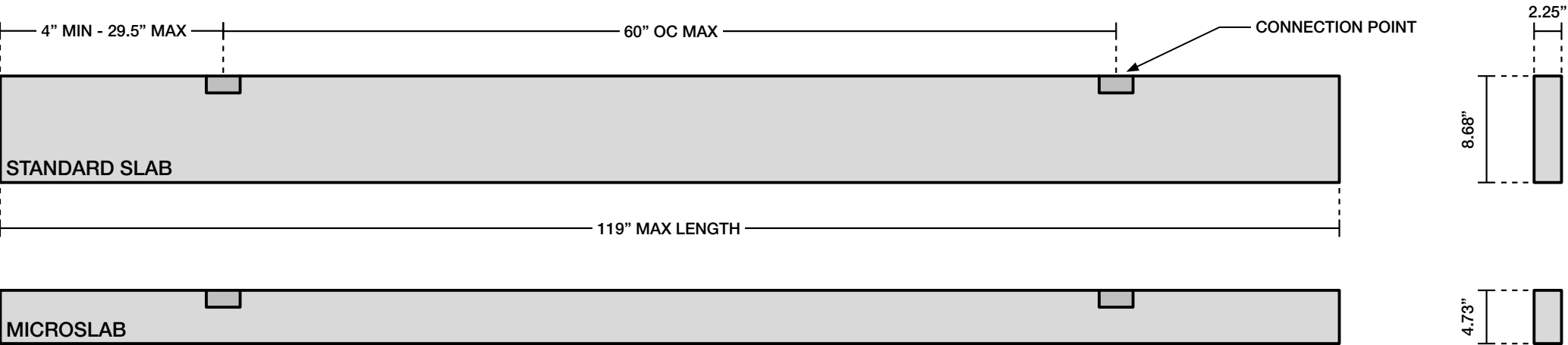
The Gridlock attachment flexes to grasp the tee grid.

9/16" or 15/16" flat tee grid, or 9/16" bolt-slot tee grid is required.

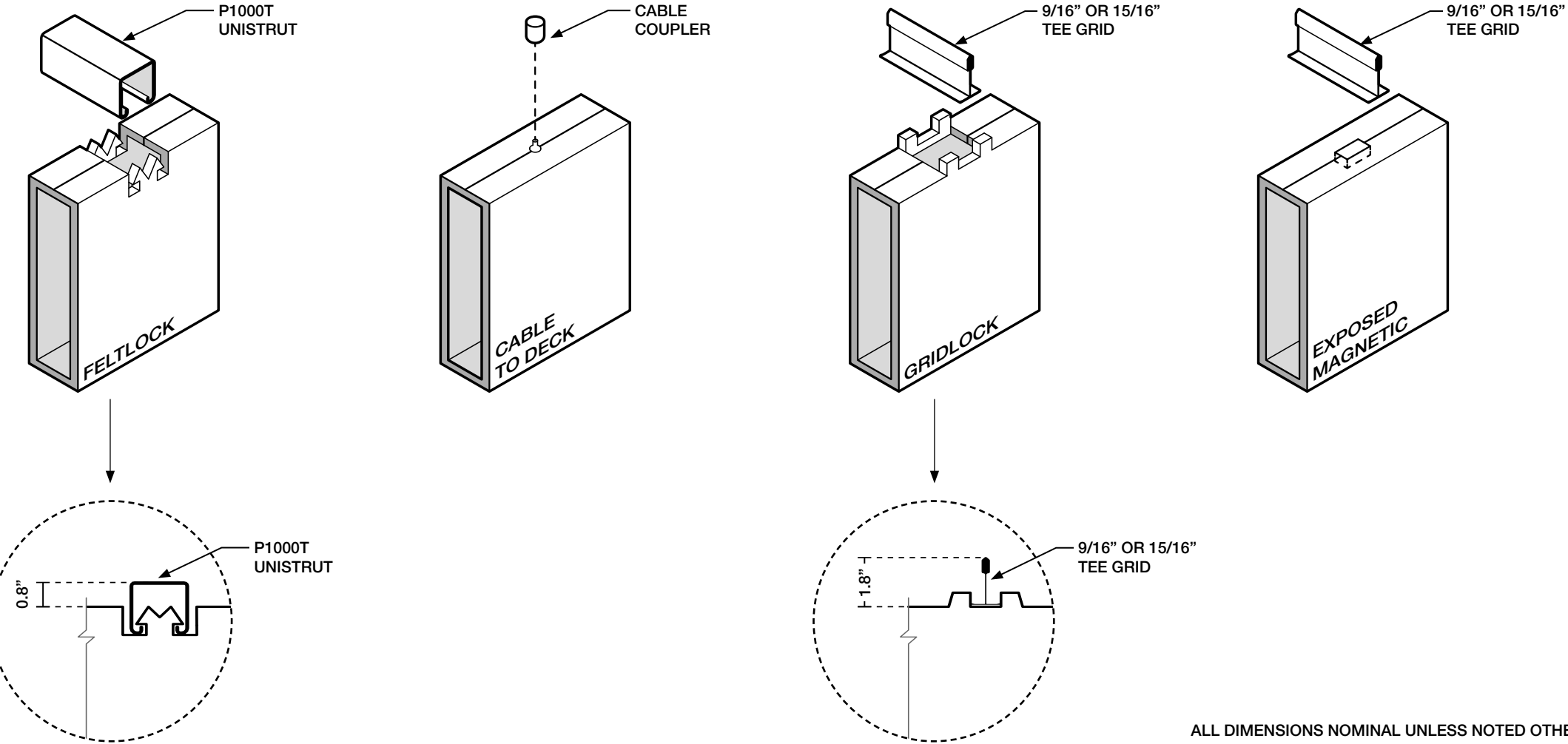
Exposed Magnetic

A powerful attachment to 9/16" or 15/16" tee grid for secure and easy installation.

CONNECTION SPACING



RECOMMENDED CONNECTIONS



ALL DIMENSIONS NOMINAL UNLESS NOTED OTHERWISE



Alternative Connections

Additional Options

Beyond our standard connections, we offer the following connection options for Slab too.

P1000T Unistrut

Cable to Unistrut
Threaded Rod to Unistrut
Rotated Feltlock

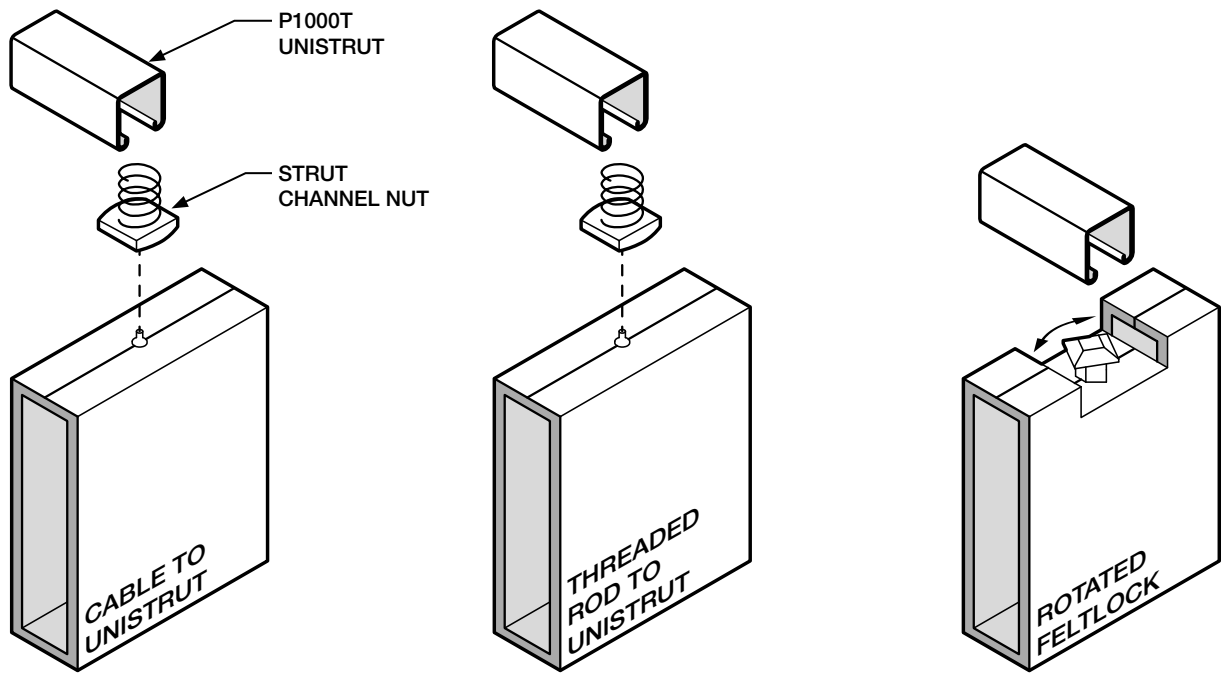
9/16" or 15/16" Tee Grid

Cable to Tee Grid
Embedded Nut to Bolt-Slot
Grid Clip

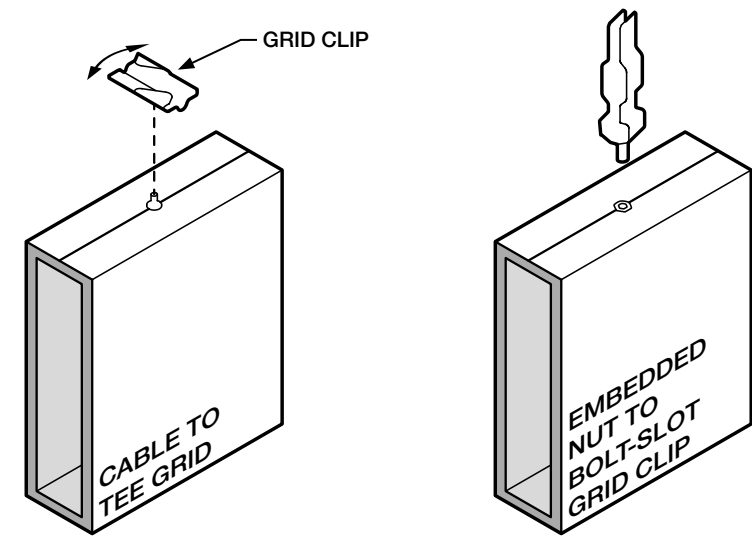
Miscellaneous

Embedded Nut
Threaded Rod

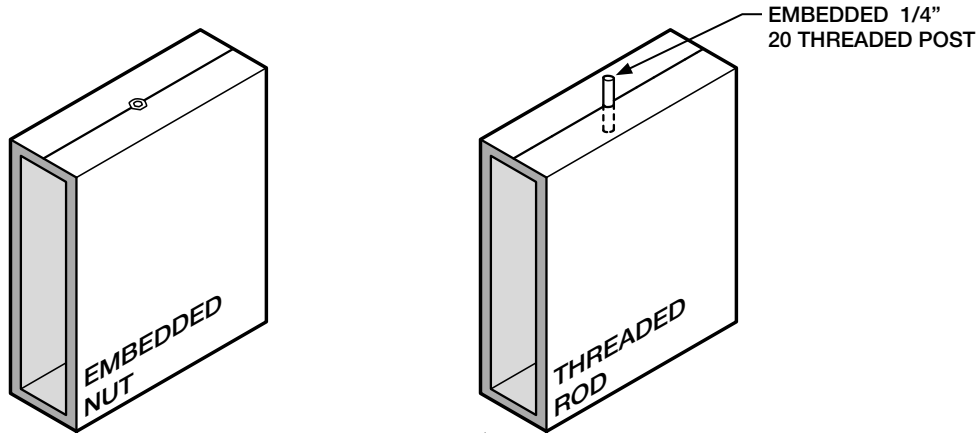
ALTERNATIVE UNISTRUT CONNECTIONS



ALTERNATIVE TEE GRID CONNECTIONS



ALTERNATIVE MISCELLANEOUS CONNECTIONS



Layout Considerations

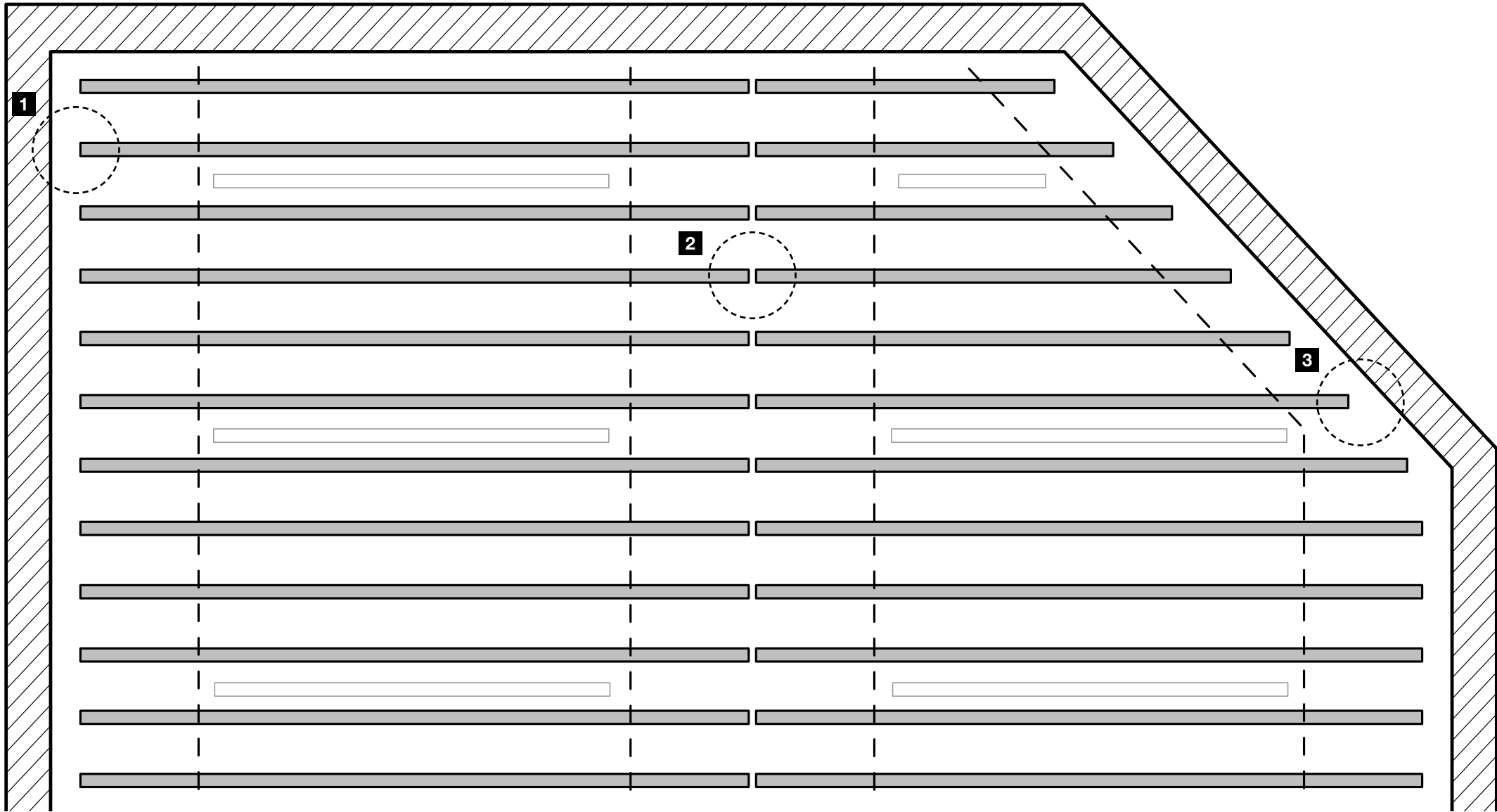
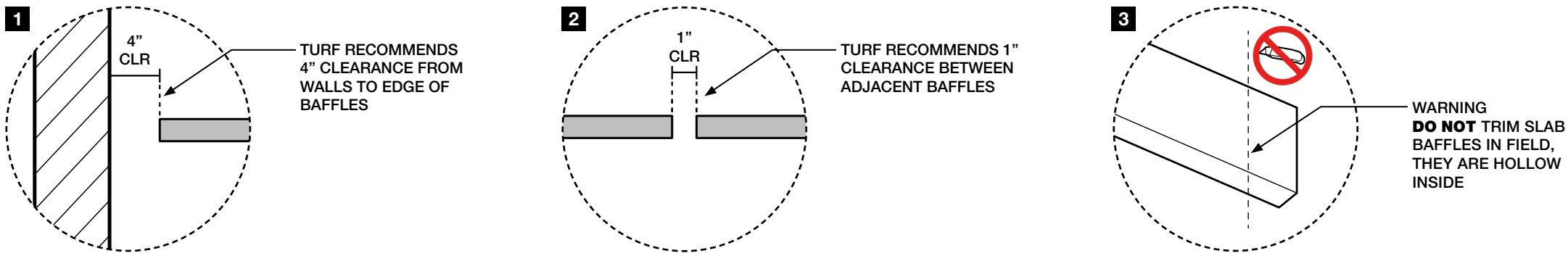
- Wall Clearance

Turf recommends a 4" clearance from the wall to our baffles.
- Adjacent Baffle Clearance

Turf recommends a 1" gap between all rows of baffles. This clearance supports a uniform look and build.

If you're looking for no clearance between baffles, we can supply hardware to accommodate at an additional cost.
- Trim in Field

Slab cannot be trimmed in field, baffles are hollow inside.



SLAB BAFFLE - EXAMPLE RCP



Tech

Acoustics	ASTM C 423-17: Type J
Fire Rating	ASTM E-84 – Class A
VOC	ASTM D5116 Compliant

Details

Lead Time	Check the Turf website for current lead times.
Warranty	Five (5) years
Maintenance	Vacuum to remove any particulate matter and air-borne debris or dust. Compressed air can be used to dust the material in difficult to reach areas for large assemblies. Contact us for more information relative to spot cleaning.
Weight	Turf products cannot support the weight of any other items in field.

Acoustic Rating

Slab Baffle NRC				
Depth	6" OC	12" OC	18" OC	24" OC
4"	0.75	0.50		
4.625"	0.85	0.55	0.40	0.35
5.625"	0.90	0.65	0.50	0.40
8.68"	1.05	0.80	0.65	0.55
11.75"		0.95	0.75	0.65
16"		1.10	0.90	0.80
20"		1.25	1.05	0.95

The table displays information for an array of sound absorbing baffles suspended by cables, evenly distributed in four rows of four units.

Certifications



Photograph by Kendall McCaugherty, Hall + Merrick + McCaugherty Photographers



Photograph by Tom Sibley, Studio B Photography



9mm Colors

Introducing Hues, our new 9mm color palette designed for the senses.

The 9mm PET felt board is used as our primary construction material. Select one of our coordinating neutrals to blend in, or go for a contrasting element with one of our hues.

The process used to create PET felt often results in a heathered effect where multiple tones are present. Slight variations in color should be expected when using this sustainable material.

Felt Thickness
9mm +/-0.5 mm

Monitors and printers vary.
Please request a material sample to verify felt colors.



10 TOPO GREEN



12 GRASSHOPPER



11 CELADON



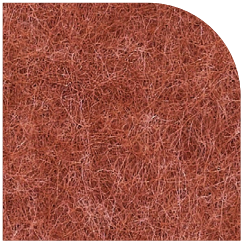
63 SAFFLOWER



64 PLANTAIN



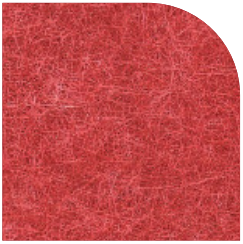
43 ORANGE CRUSH



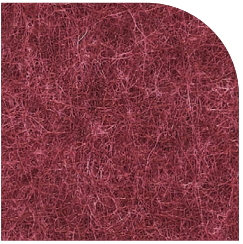
18 ULTISOL



17 BLUSH



23 RED



15 MERLOT



50 IVORY



33 LUMINARY



83 HOLLAND OATS



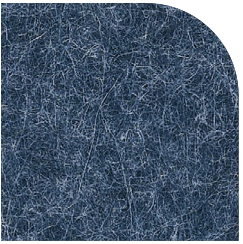
82 BARLEY



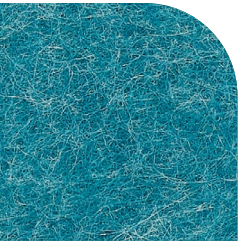
34 TONAL TAUPE



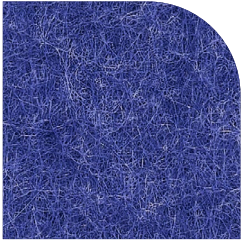
35 BARK



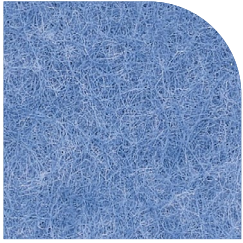
28 INDIGO



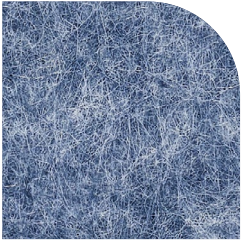
30 CYAN



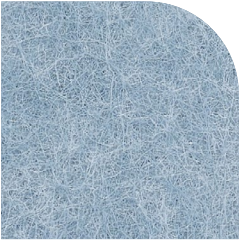
24 ROYAL BLUE



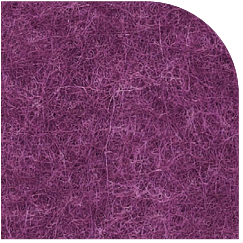
31 AZURE



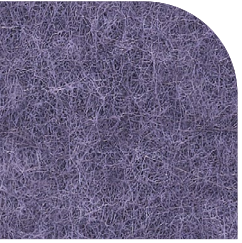
27 JEAN JACKET



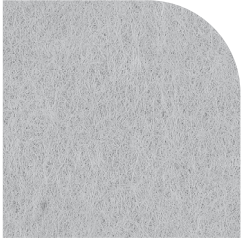
26 FADED DENIM



40 MAGENTA



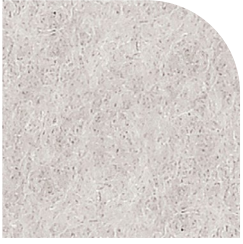
41 DRIED LAVENDER



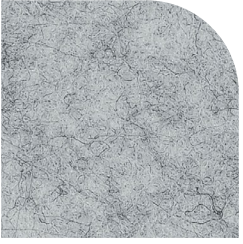
66 PEWTER



05 WHITE



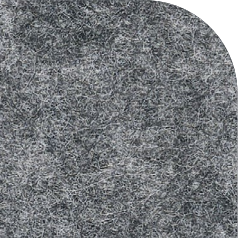
01 CREAM



04 LIGHT GREY



98 STORM



09 DAMASCUS



06 CHARCOAL



07 BLACK



9mm Textures

Invite nature into your space with our wood-inspired textures. Digital printing on felt ensures a unique and realistic grain with virtually no repeats.

There is an additional product cost for Wood Textures.

Please note there is additional lead time for custom matching. Texture and customization will incur additional costs beyond our standard 9mm options.

Felt Thickness
9mm +/-0.5 mm

Monitors and printers vary.
Please request a material sample to verify felt colors.



D01 WHITE ASH



D02 SILVER TEAK



D03 CLEAR MAPLE



D04 WASHED ASH



D05 MEDIUM OAK



D06 PLANKED OAK



D07 DARK WALNUT



D08 BLACK PEAR