

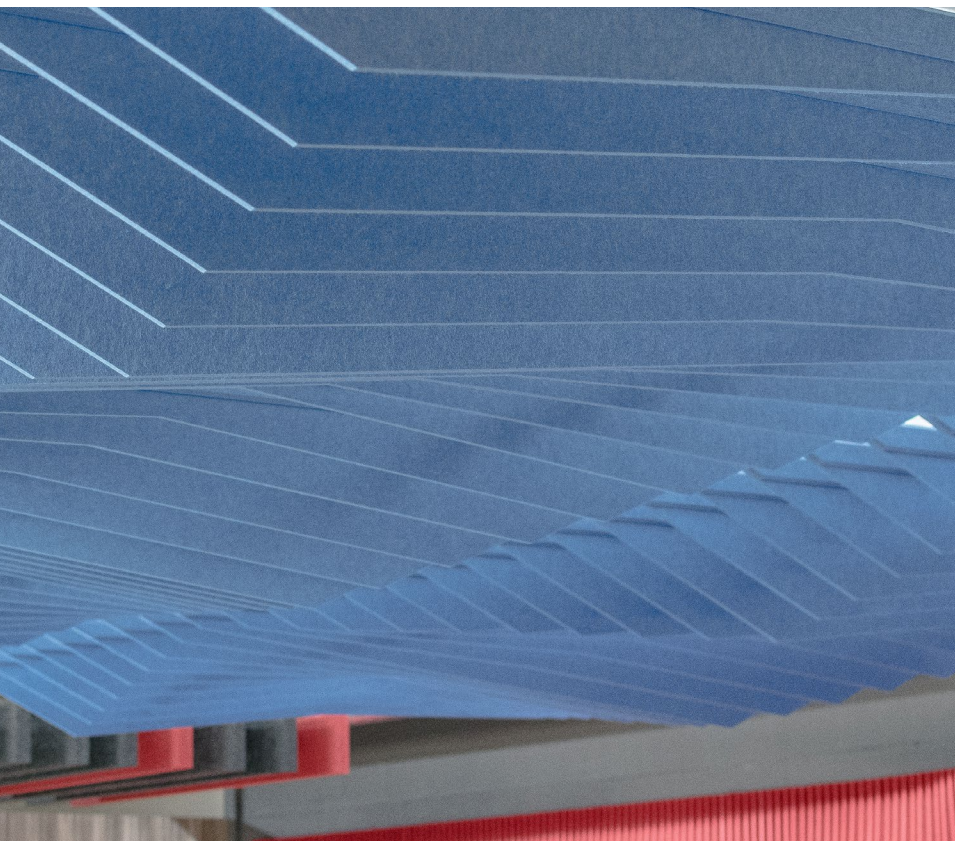
The image shows a close-up, low-angle view of a blue synthetic turf product. The turf is laid out in a way that creates a strong sense of perspective, with the ridges of the turf running diagonally from the bottom left towards the top right. The ridges are uniform in height and spacing, creating a rhythmic pattern. The color is a vibrant blue. In the background, some white structural elements, possibly part of a stadium seating or a display stand, are visible but out of focus.

# Ridge Baffle

by

**T U R F**





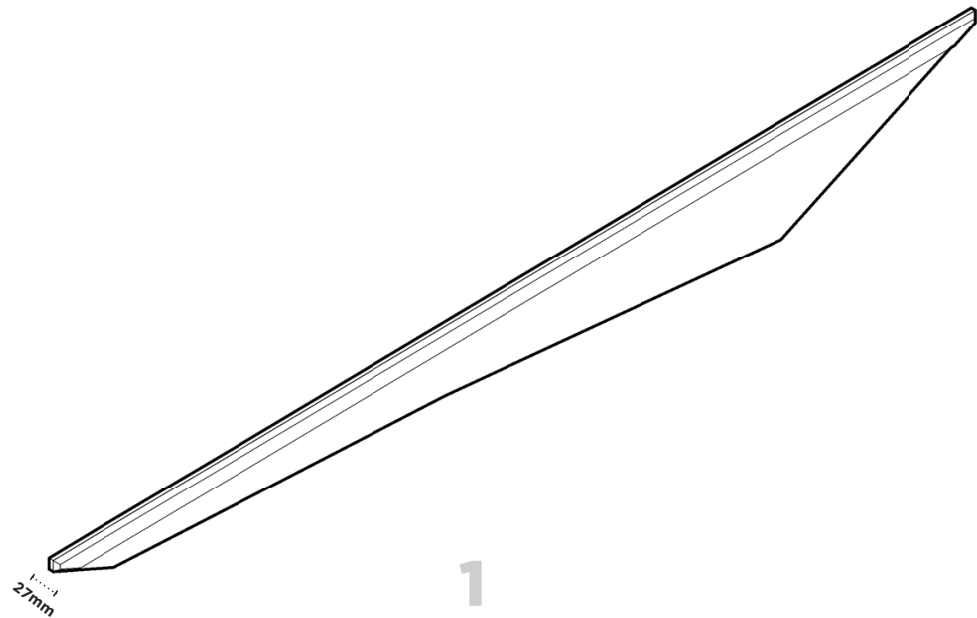
## Ridge Baffle

### CUSPATE & OSCILLATING

The Ridge Baffle, with its crisp profile and gradual change in pattern, swings like a metronome, pendulating from peak to peak. Designed to work with standard connection systems, Ridge installs in seconds. This is where flowing aesthetics and acoustic performance meet in harmony.



# Baffle Sizes

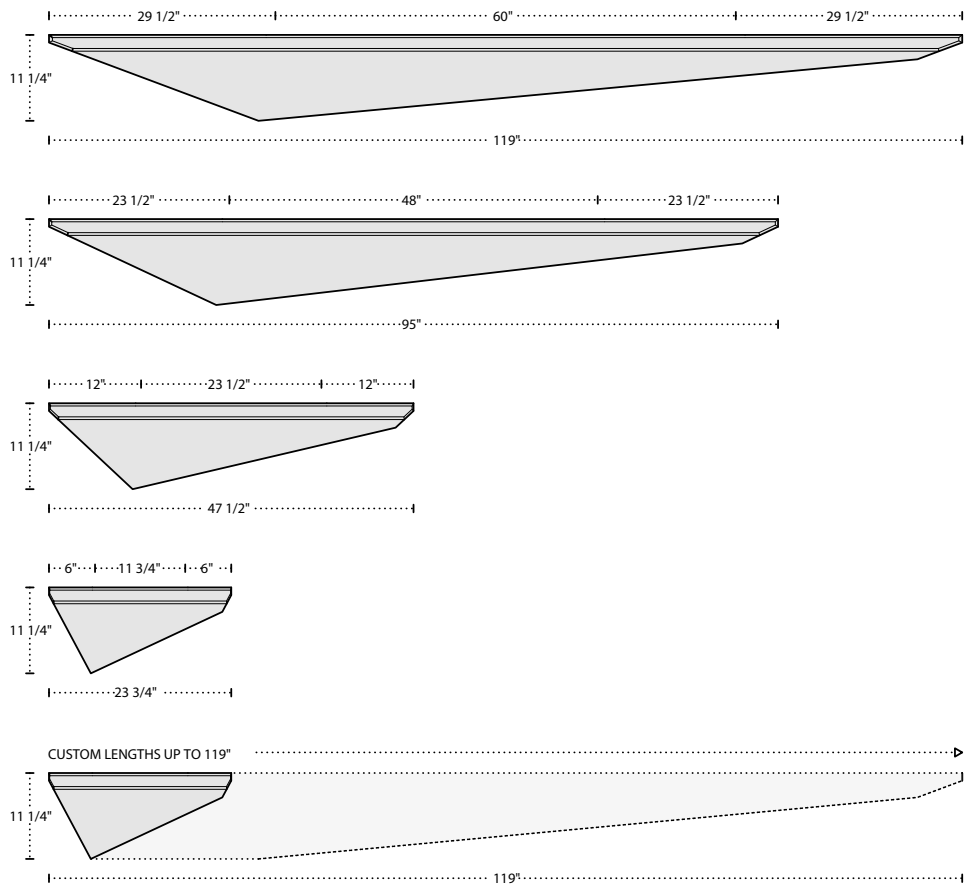


1

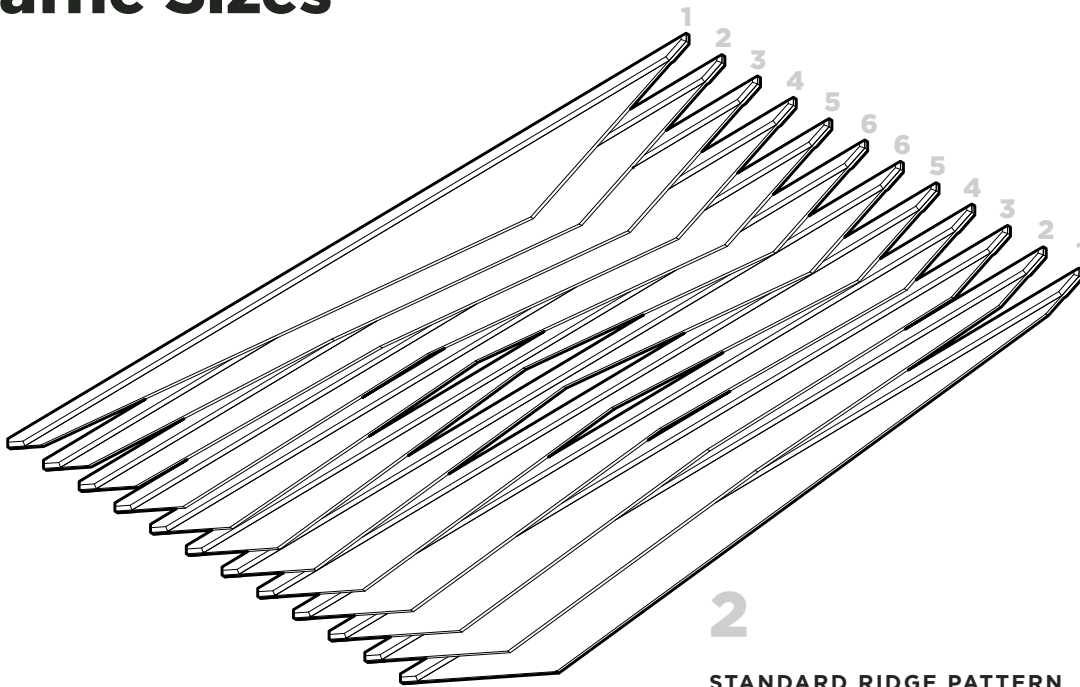
### BAFFLE PERSPECTIVE

Ridge is made of 9mm Recycled PET felt sandwiched between 2x 9mm stiffeners. In addition to custom lengths up to 119", Ridge also comes in four standard sizes, making this product incredibly flexible.

### STANDARD LENGTHS



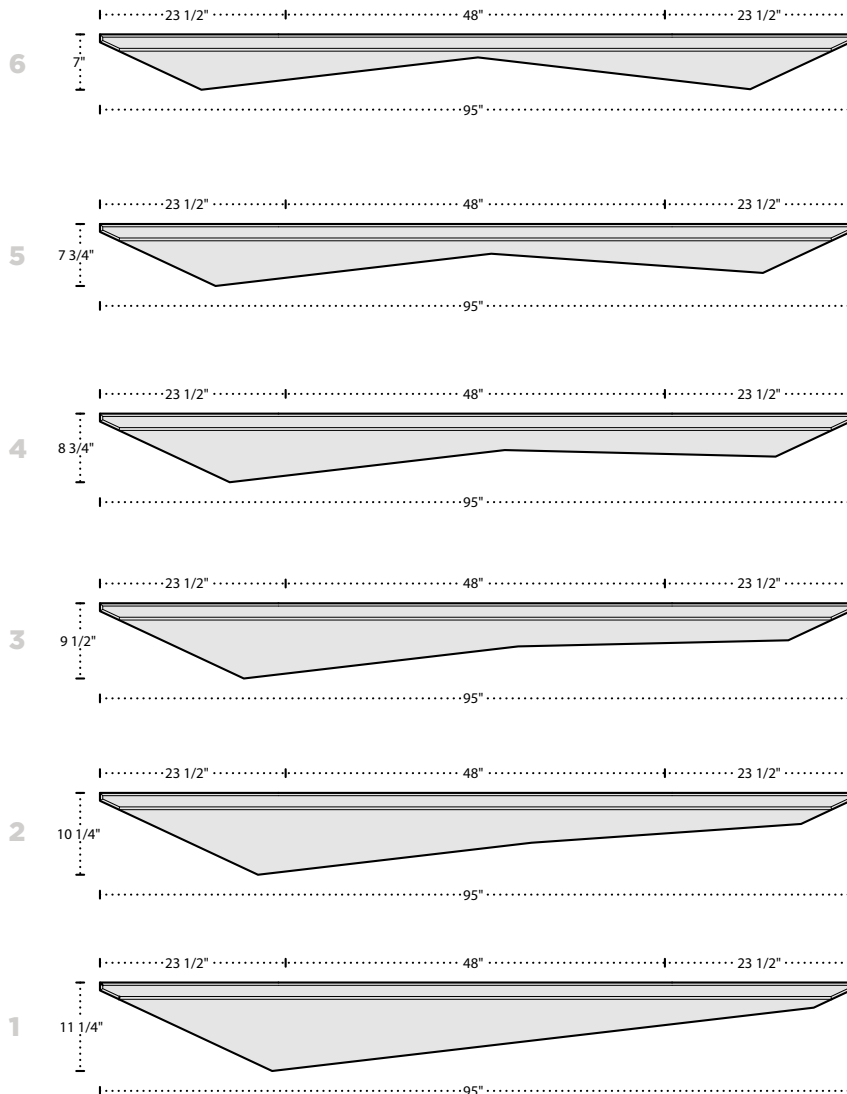
# Baffle Sizes



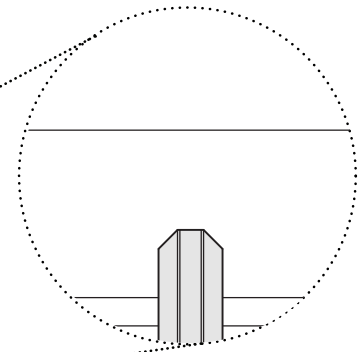
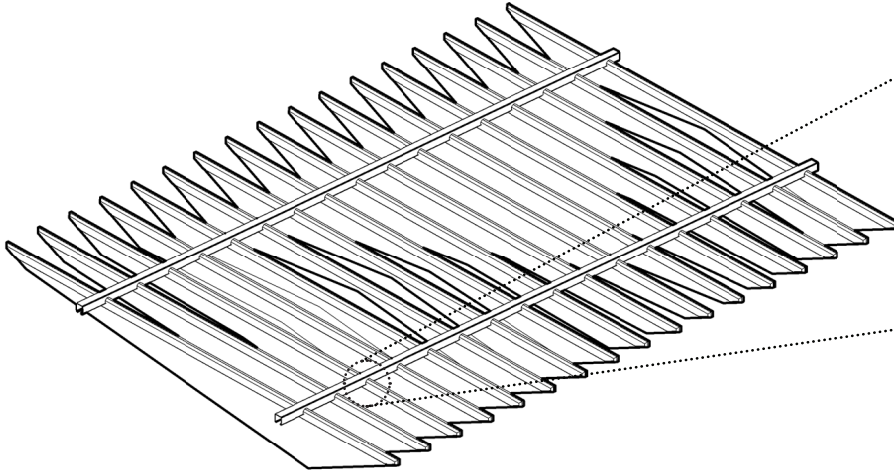
2

## STANDARD RIDGE PATTERN

The Ridge Ceiling System pattern is made of six unique baffles installed in sequence. When rotated, the undulation repeats continuously.

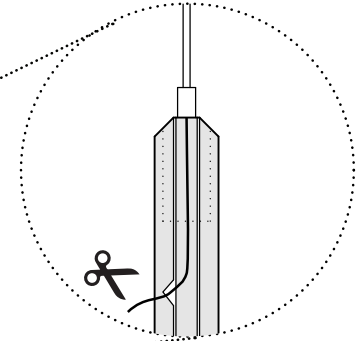
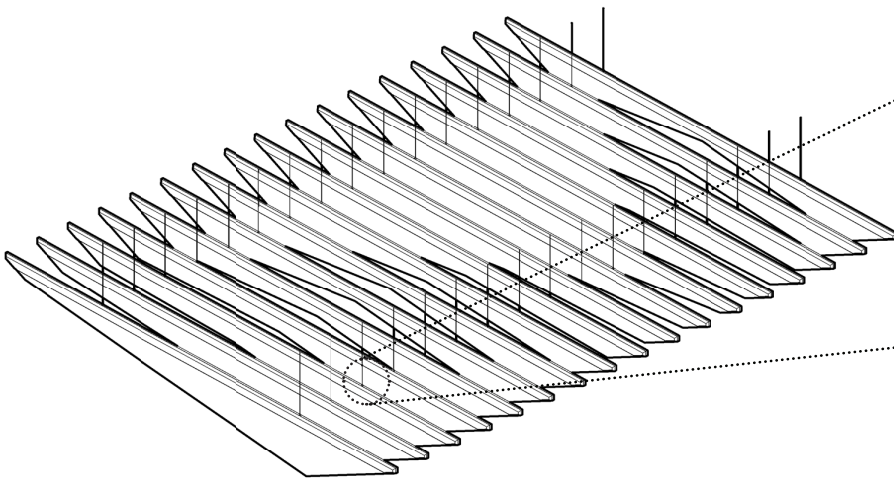


# Connection Types



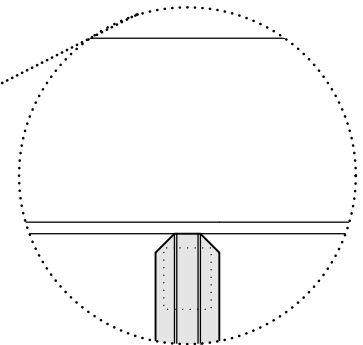
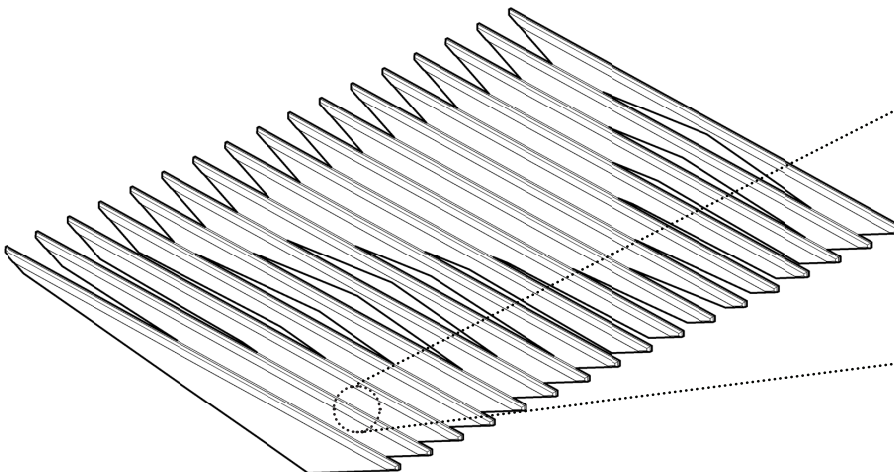
## FELT LOCK

The baffles are—**in seconds**—snapped into place in standard lengths of **unistrut**—the industry's most universal installation hardware.



## CABLE SUSPENSION

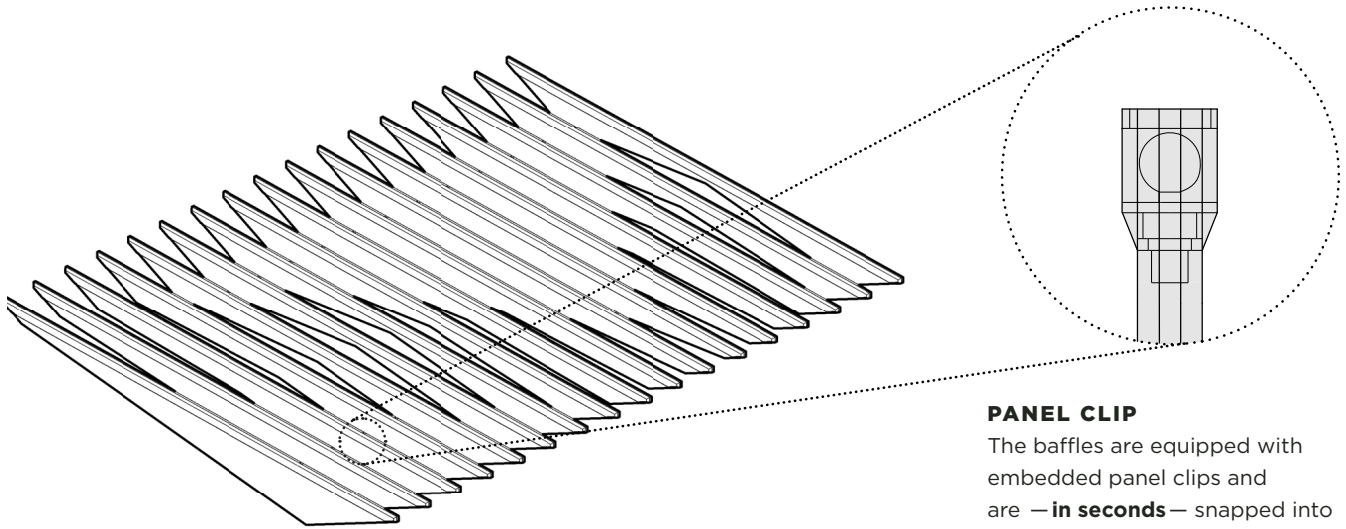
The baffles have embedded cable grippers, enabling them to snap - **in seconds** - into deck mounted **aircraft cables**.



## MAGNETIC CONNECTION

These magnetic baffles snap directly to **any ferrous metal hardware** making this baffle incredibly versatile and easy to install.

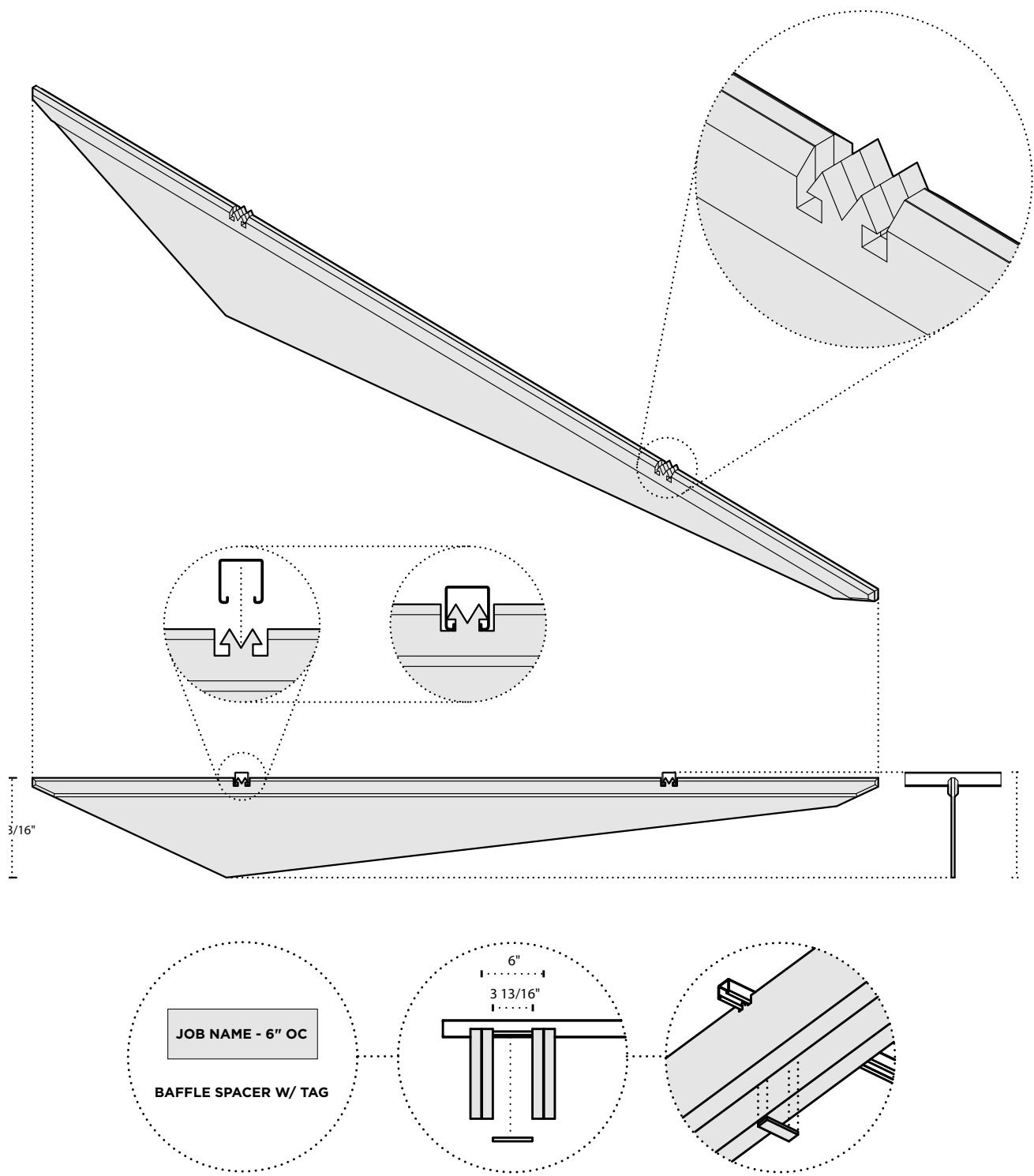
# Connection Types



## PANEL CLIP

The baffles are equipped with embedded panel clips and are —**in seconds**— snapped into place.

# Felt Lock



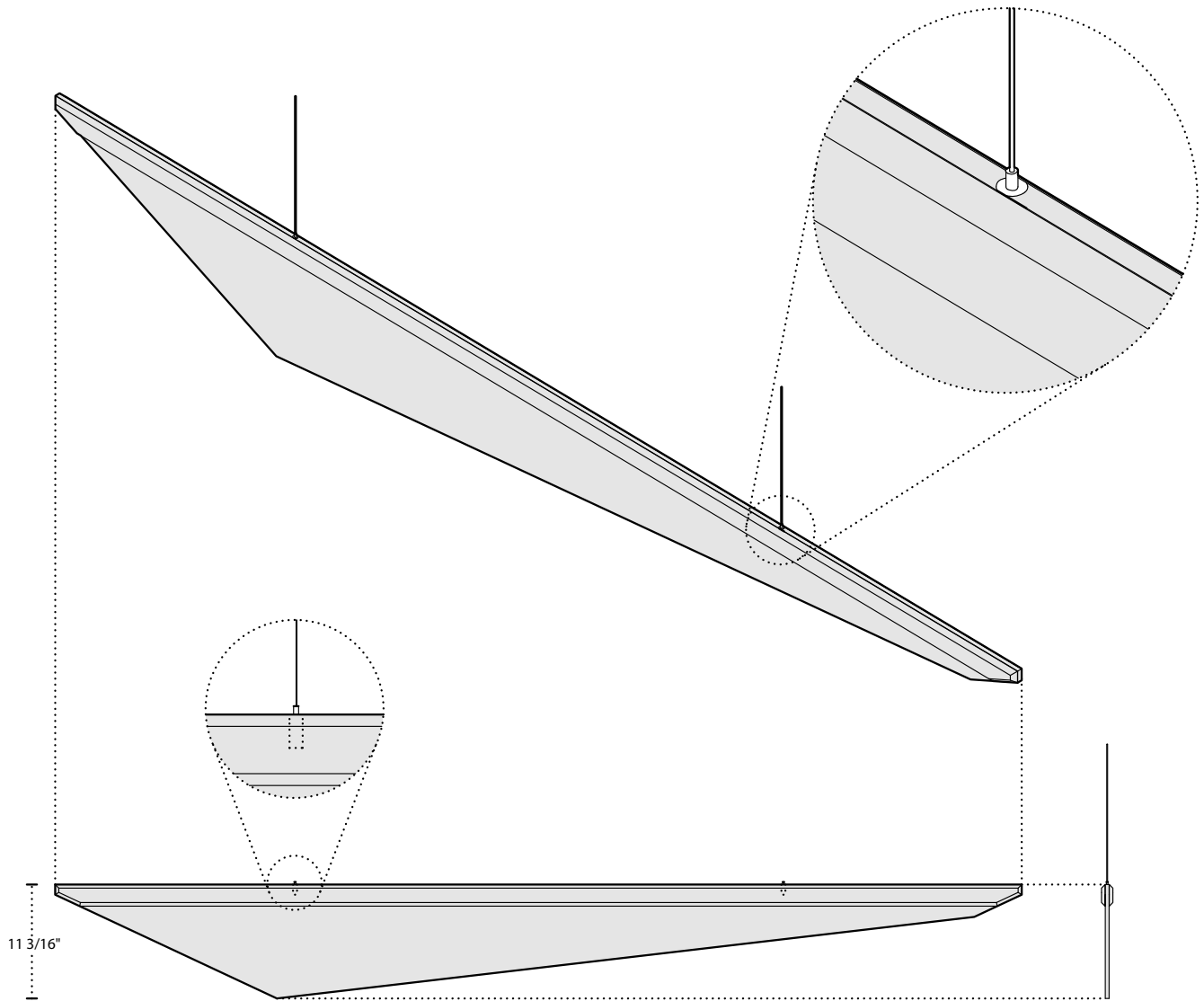
1

\*Spacing dependent on project

## BAFFLE ASSEMBLY

The baffles are — **in seconds** — snapped into place in standard lengths of **unistrut** — the industry’s most universal installation hardware. Evenly spaced with 9mm strips of felt that slide into the unistrut channel in between baffles.

# Cable Suspension



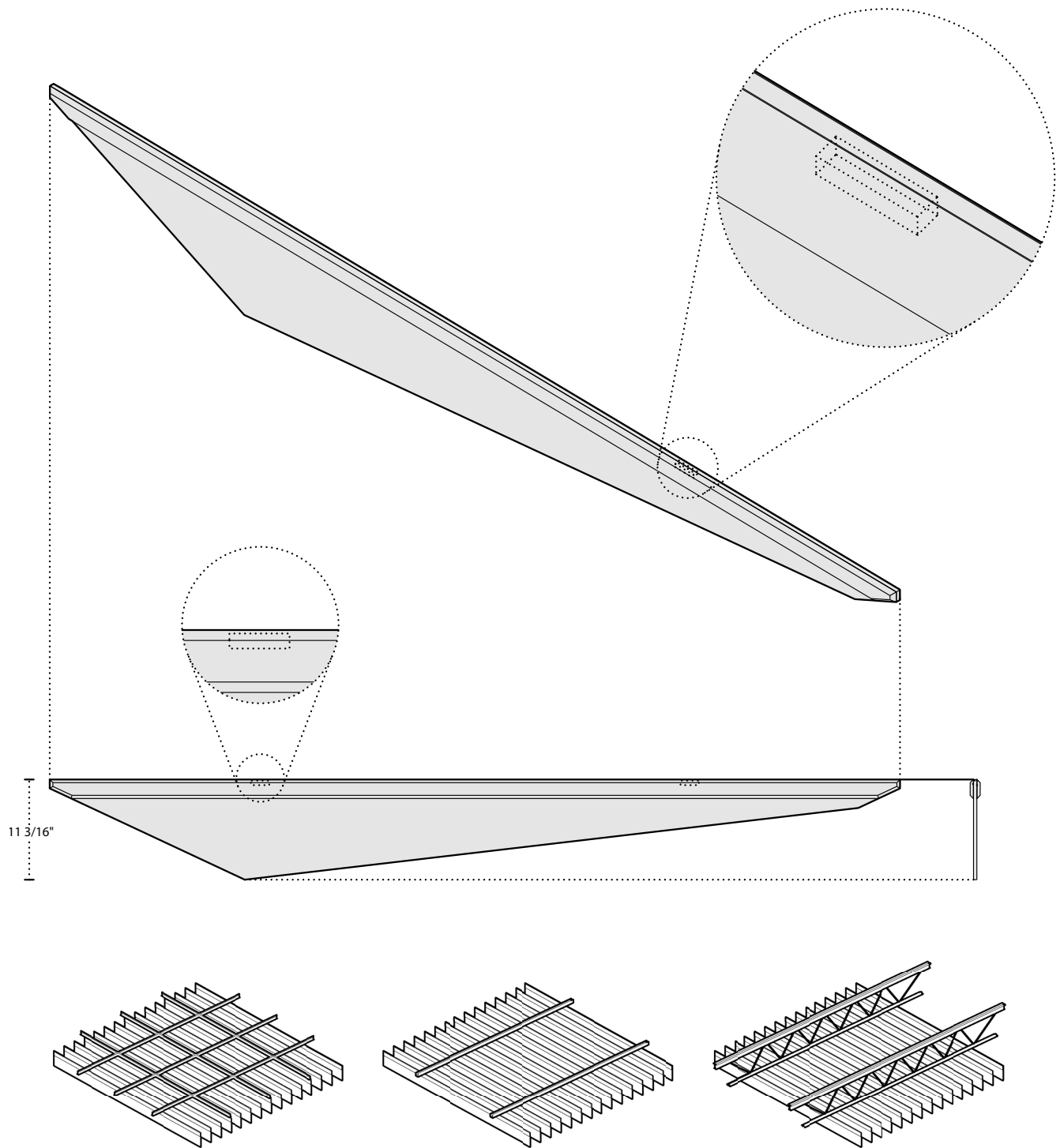
## 2

### BAFFLE ASSEMBLY

Attached directly to the deck, aircraft cables can be arranged in any desired pattern. The baffles have embedded cable grippers, enabling them to snap **- in seconds -** into the deck mounted cables.



# Magnet

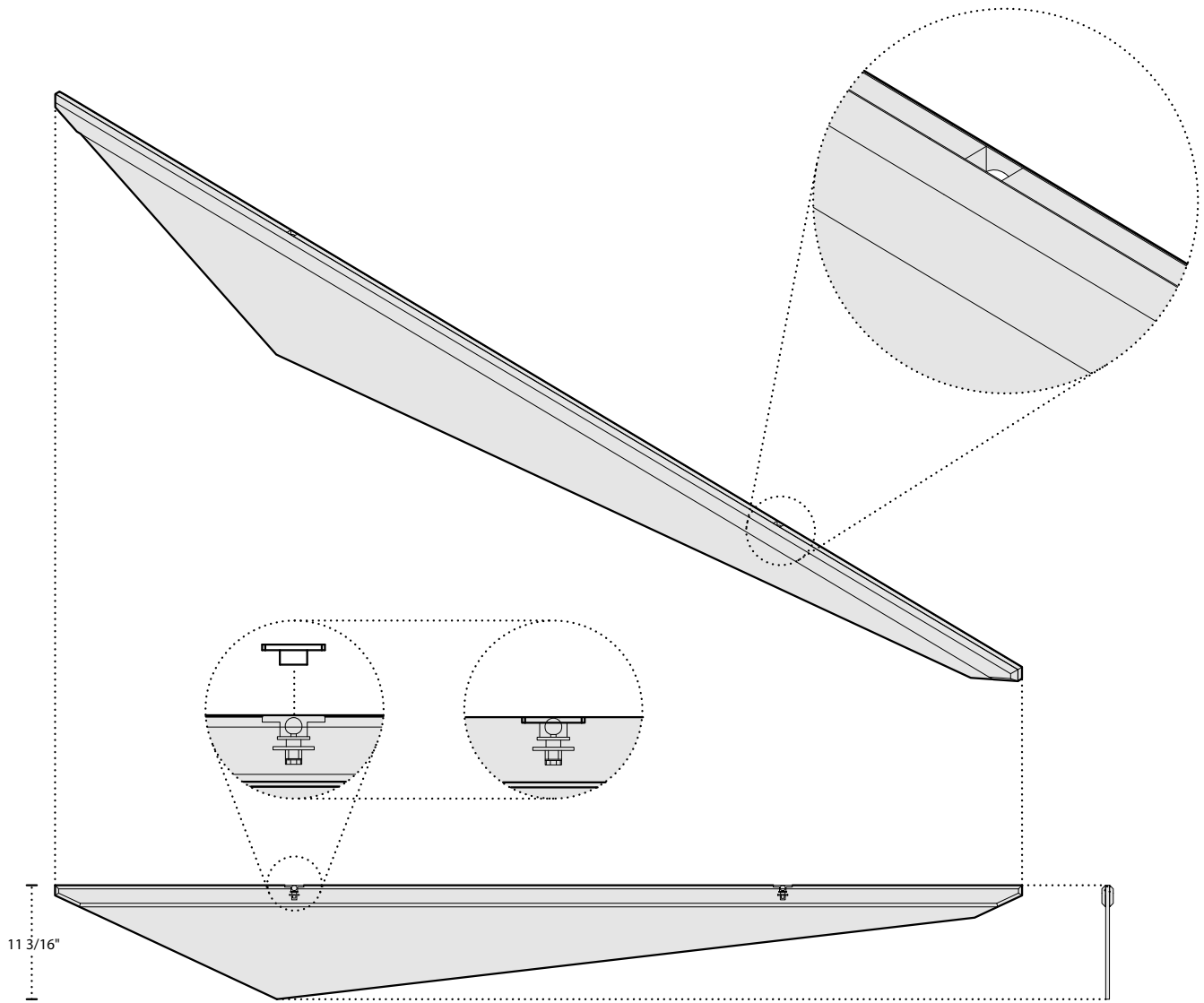


### 3

#### BAFFLE ASSEMBLY

These Magnetic baffles snap directly to **tee bar**, **unistrut**, or **steel joists**, making this baffle incredibly versatile and easy to install.

# Panel Clip



## 4

### BAFFLE ASSEMBLY

These male panel clip embedded baffles snap directly to ceiling mounted **female panel clips**, making this baffle incredibly easy to install directly to any finished surface.



# Specifications

PRODUCT NAME	Ridge Baffle
CONTENT	Up to 60% Pre-Consumer Recycled Content Polyester Felt
FELT THICKNESS	9mm
PANEL THICKNESS	27mm
SMALLEST SIZE	7"X 23.75"
MAXIMUM SIZE	11.5"X119"
EDGE OPTIONS	Exposed Felt
COMPONENTS	UNISTRUT P1000T Standard, Nylon Panel Clip, universal steel T-Grid, 1/16th in Aircraft Cable. (supplied by installer)
DURABILITY	Contract
MAINTENANCE	Vacuum occasionally to remove any particulate matter and air-borne debris or dust. Compressed air can be used to dust the material in difficult to reach areas or for large assemblies.
LEAD TIME	Check the Turf website for current lead times.
ENVIRONMENTAL	9mm PET felt board is made from up to 60% pre-consumer recycled content. TURF is pursuing product transparency for LEED V4 MR Credit 4 Option 1, and MR Credit 3 Option 2 for recycled content. TURF is pursuing a Declare Label for this product.
VARIATION	PET Felt uses a traditional 'felting' process to create its panels. This often results in a pleasing heathered' effect, where multiple tones are present in the fiber. Slight and consistent variations in color should be expected when using this sustainable material.
ACOUSTICS	ASTM C423-17: NRC = 0.75 (Material)
FIRE RATING	Product made from Class A PET felt material tested under ASTM E-84.

# 9MM FELT

This product is made with 9 mm PET felt board. The process used to create PET felt often results in a heathered effect where multiple tones are present. Slight variations in color should be expected when using this sustainable material.

Felt thickness is 9 mm +/- 0.5 mm.

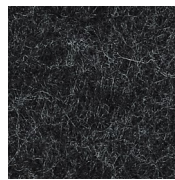
**Monitors and printers vary. Please request a material sample to verify felt colors.**

## Looking for the old color palette?

Old colors are still available for legacy projects, but check with us for availability if you're interested in using them for new projects.



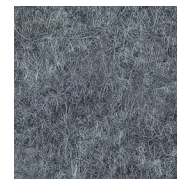
07 BLACK



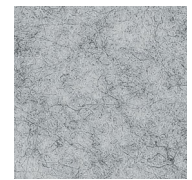
06 CHARCOAL



09 DAMASCUS



98 STORM



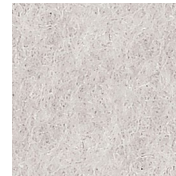
04 LIGHT GREY



66 PEWTER



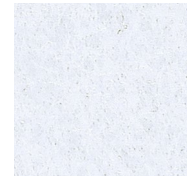
50 IVORY



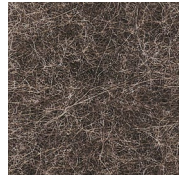
01 CREAM



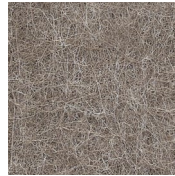
33 LUMINARY



05 WHITE



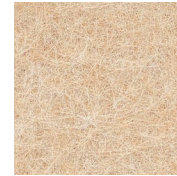
35 BARK



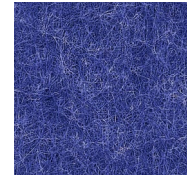
34 TONAL TAUPE



82 BARLEY



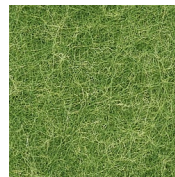
83 HOLLAND OATS



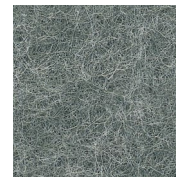
24 ROYAL BLUE



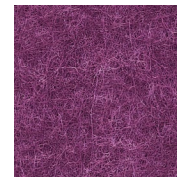
10 TOPO GREEN



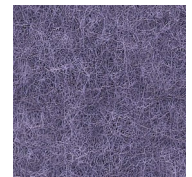
12 GRASSHOPPER



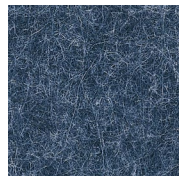
11 CELADON



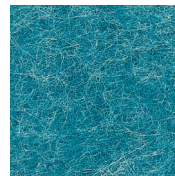
40 MAGENTA



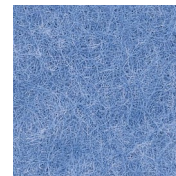
41 DRIED LAVENDER



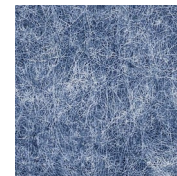
28 INDIGO



30 CYAN



31 AZURE



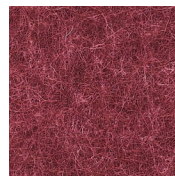
27 JEAN JACKET



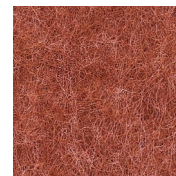
26 FADED DENIM



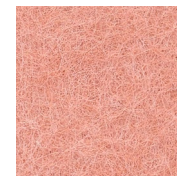
23 RED



15 MERLOT



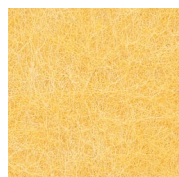
18 ULTISOL



17 BLUSH



43 ORANGE CRUSH



63 SAFFLOWER

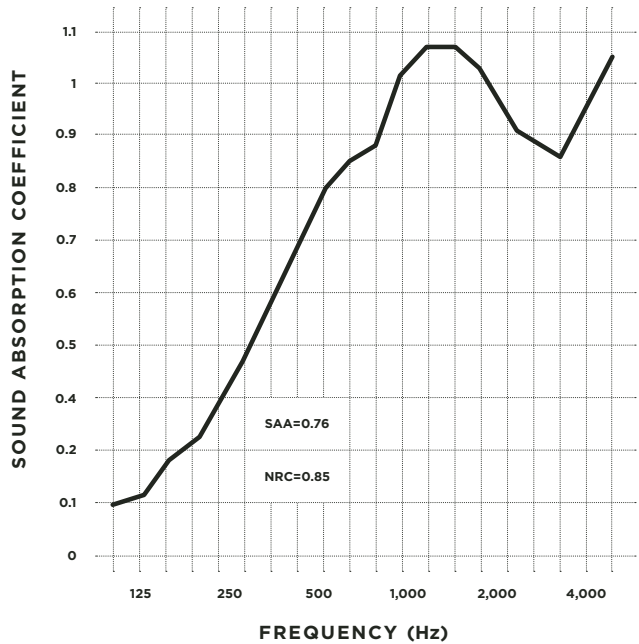


64 PLANTAIN



## Acoustic Testing (ASTM C 423-17)

FREQUENCY (Hz)	SOUND ABSORPTION COEFFICIENT
32	.03
40	-.01
50	-.02
63	-.07
80	.06
100	.09
125	.12
160	.20
200	.24
250	.33
315	.45
400	.59
500	.76
630	.85
800	.89
1,000	1.00
1,250	1.06
1,600	1.06
2,000	.99
2,500	.89
3,150	.83
4,000	.94
5,000	1.04
6,300	1.00
8,000	1.05
10,000	1.07
12,500	1.07



## TEST ARRANGEMENT

PET Acoustic panel =400mm air layer.

# Declare.

3mm + 9mm PET Acoustic Panel  
TURF Design

**Final Assembly:** Gilberts, Illinois, USA  
**Life Expectancy:** 50 Year(s)  
**End of Life Options:** Salvageable/Reusable in its Entirety,  
Recyclable (100%)

**Ingredients:**

PET, Flame Retardant; N,N-Ethylene bis(stearamide); White  
Tint; Antioxidant 1076; Antioxidant KY-405; Stearic Acid

**Living Building Challenge Criteria:** Compliant

**I-13 Red List:**

- LBC Red List Free
- LBC Red List Approved
- Declared

% Disclosed: 100% at 100ppm  
VOC Content: Not Applicable

**I-10 Interior Performance:** Compliant with California Title 24  
**I-14 Responsible Sourcing:** Not Applicable

TFD-0002  
EXP 01 DEC 2022  
Original Issue Date: 2019

SEEKING THE SUPPORT OF A LIVING ACTIVITY  
INTERNATIONAL LIVING FUTURE INSTITUTE™ [livingfuture.org/declare](https://livingfuture.org/declare)