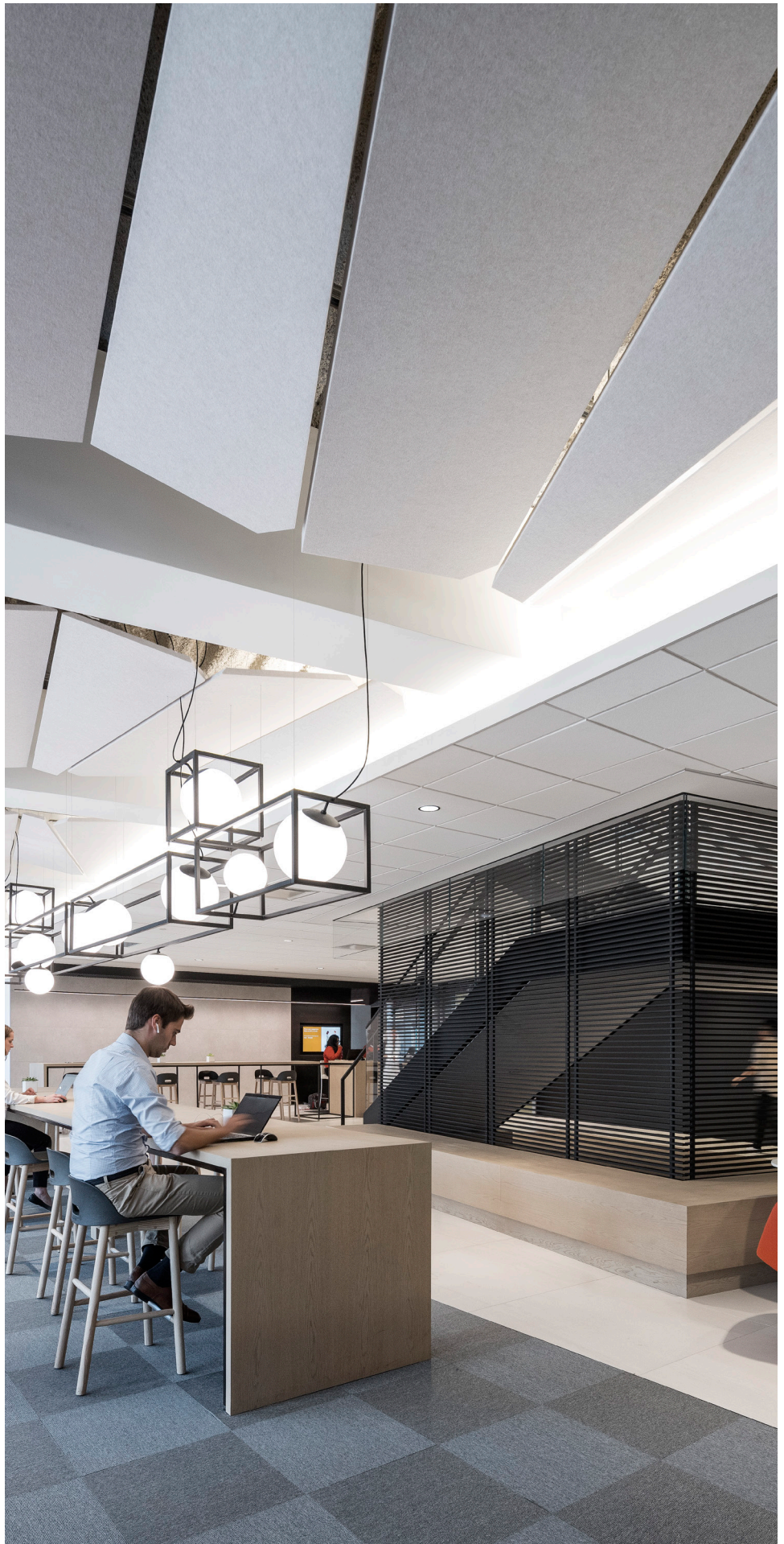


## **PLATE** ceiling cloud

### Adaptable & Expansive

Plate is a substantial, lightweight sheet of felt that is available in custom shapes to fit your space. Streamlined yet impactful, the Plate ceiling cloud system installs easily using embedded threaded rods or cable grippers, bringing you top-notch acoustic and aesthetic quality.



PATENT PENDING

# SPECS

**PRODUCT**

Plate ceiling cloud

**CONTENT**

Polyester (PET) felt  
60% pre-consumer recycled

**SIZING**

Custom is TURF's standard.  
Everything is designed and  
made to order, so your Plate  
cloud system will perfectly  
fit your ceiling.

# DIMENSIONS

**LENGTH**

12" L to 108" L

**WIDTH**

12" L to 36" L

**FELT THICKNESS**

9 mm

**BAFFLE THICKNESS**

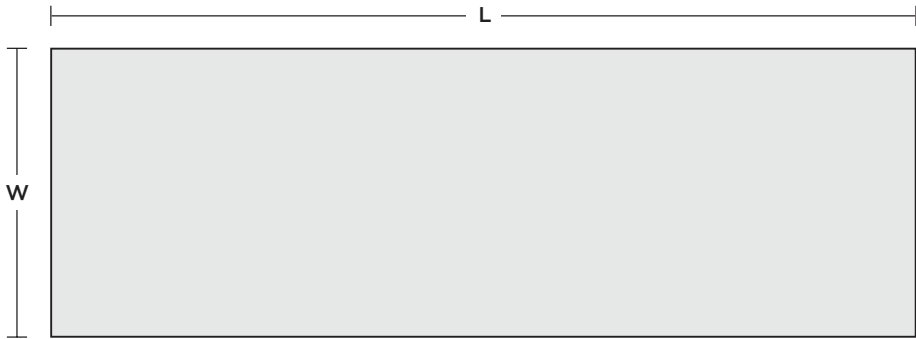
1.58" T

# SHAPES

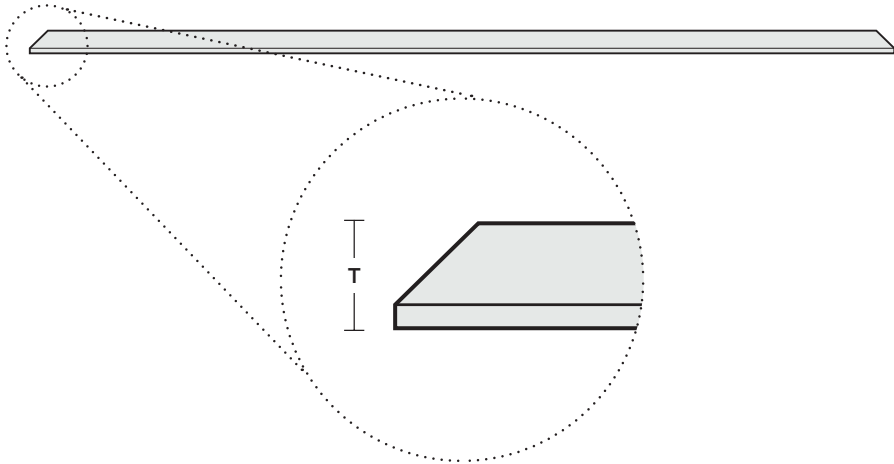
Triangles and hexagons and  
quadrilaterals, oh my! Any convex  
shape is possible with the Plate  
construction, but no stars or  
corners that point inward.



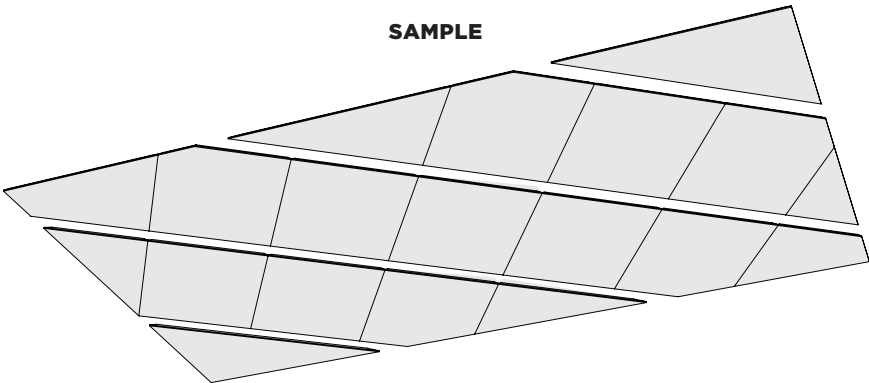
**BOTTOM ELEVATION**



**SIDE ELEVATION**



**SAMPLE**

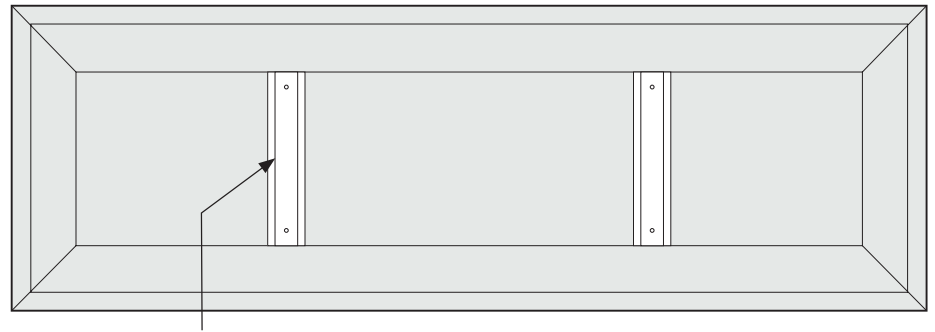


# CONNECTIONS

Steel channels embedded within Plate house the connection hardware.

Connection type, spacing and locations are project dependent and are set in the approval drawings for the project.

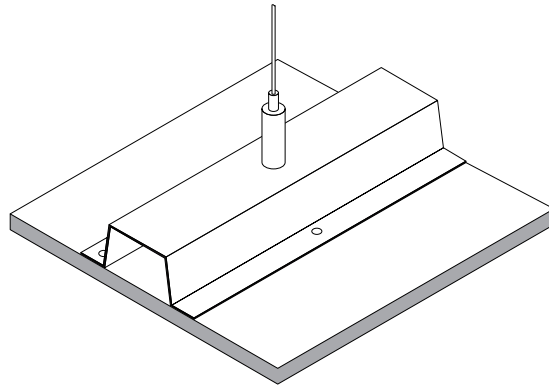
TOP ELEVATION



LIGHT WEIGHT  
STEEL CHANNEL

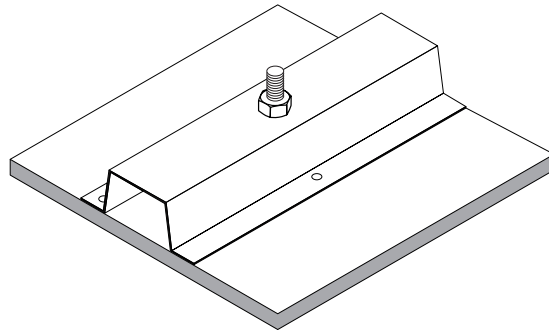
## CABLE SUSPENSION

Aircraft cables attached directly to the deck can be arranged in any pattern. The acoustic panel cables feed into the embedded cable grippers.



## THREADED ROD

Threaded rods are used to create connection details based on standardized 1/4"-20 thread sizing.





# 9MM FELT

This product is made with 9 mm PET felt board. The process used to create PET felt often results in a heathered effect where multiple tones are present. Slight variations in color should be expected when using this sustainable material.

Felt thickness is 9 mm +/- 0.5 mm.

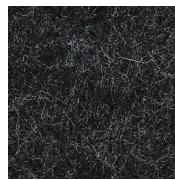
**Monitors and printers vary. Please request a material sample to verify felt colors.**

## Looking for the old color palette?

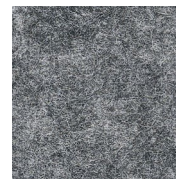
Old colors are still available for legacy projects, but check with us for availability if you're interested in using them for new projects.



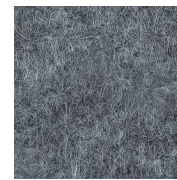
07 BLACK



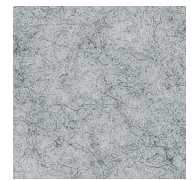
06 CHARCOAL



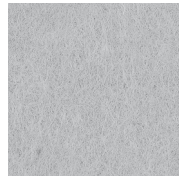
09 DAMASCUS



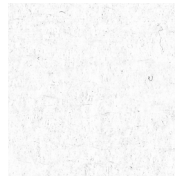
98 STORM



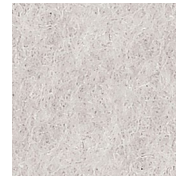
04 LIGHT GREY



66 PEWTER



50 IVORY



01 CREAM



33 LUMINARY



05 WHITE



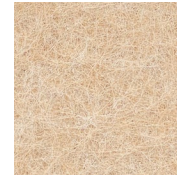
35 BARK



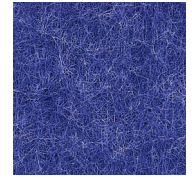
34 TONAL TAUPE



82 BARLEY



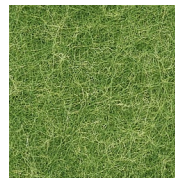
83 HOLLAND OATS



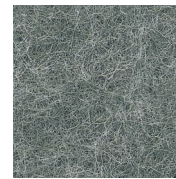
24 ROYAL BLUE



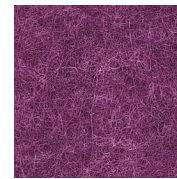
10 TOPO GREEN



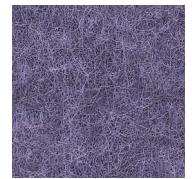
12 GRASSHOPPER



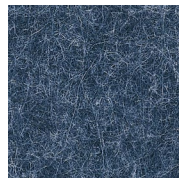
11 CELADON



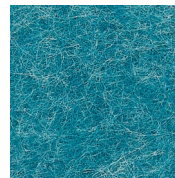
40 MAGENTA



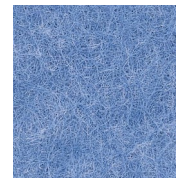
41 DRIED LAVENDER



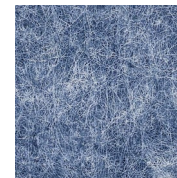
28 INDIGO



30 CYAN



31 AZURE



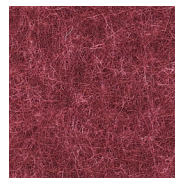
27 JEAN JACKET



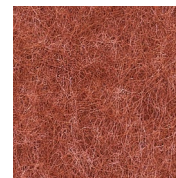
26 FADED DENIM



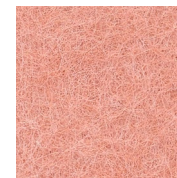
23 RED



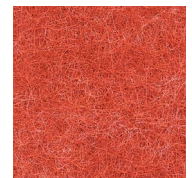
15 MERLOT



18 ULTISOL



17 BLUSH



43 ORANGE CRUSH



63 SAFFLOWER



64 PLANTAIN

# TEXTURES

## WOOD

Invite nature into your space with our wood-inspired textures. Digital printing on felt ensures a unique and realistic grain with virtually no repeats.

\* Turf Textures are an additional cost.

## CUSTOM

Endless customization options are available, including color and grain matching to your sample.

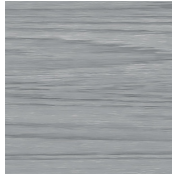
\* Please note there is additional lead time for custom matching. Texture and customization will incur additional costs beyond our standard 9 mm options.

Felt thickness is 9 mm +/- 0.5 mm.

**Monitors and printers vary. Please request a material sample to verify felt colors.**



D01 WHITE ASH



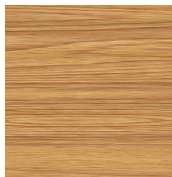
D02 SILVER TEAK



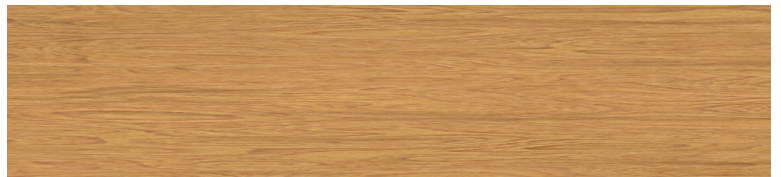
D03 CLEAR MAPLE



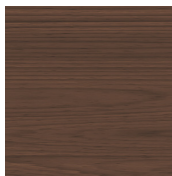
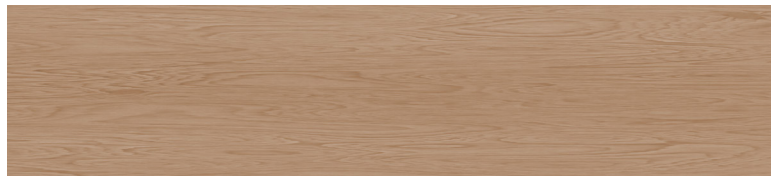
D04 WASHED ASH



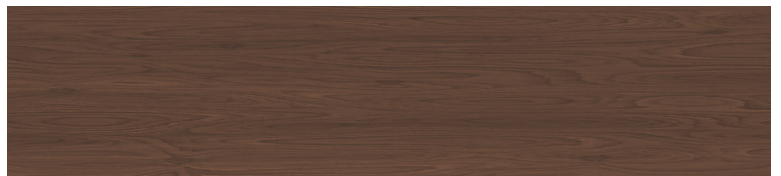
D05 MEDIUM OAK



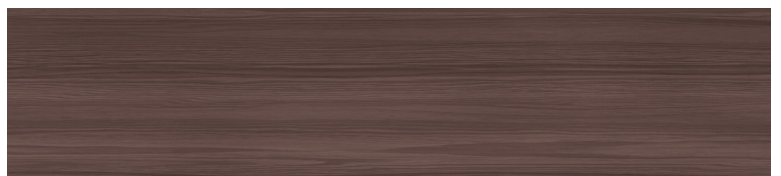
D06 PLANKED OAK



D07 DARK WALNUT



D08 BLACK PEAR





# TEXTURES

## STONE

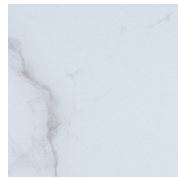
Inspired by nature, designed for felt. Our digitally printed Stone Textures capture the character and nuance of stone on top of a curated color collection from our Hues palette with virtually no repeats. The three patterns in this family each capture unique elements from the stones for which they are named.

There is an additional product cost for Stone Textures.

Turf has curated this collection to include only the best pattern and color combinations.

Felt thickness is 9 mm +/- 0.5 mm.

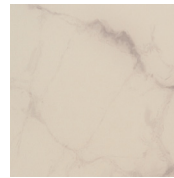
**Monitors and printers vary. Please request a material sample to verify felt colors.**



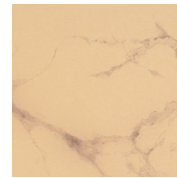
ST05 MARBLE



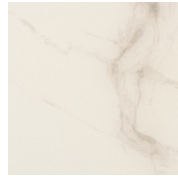
ST01 MARBLE



ST33 MARBLE



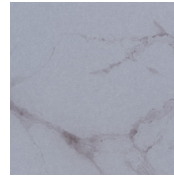
ST64 MARBLE



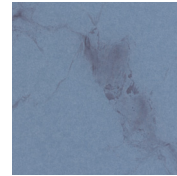
ST50 MARBLE



ST83 MARBLE



ST66 MARBLE



ST26 MARBLE



ST05 TRAVERTINE



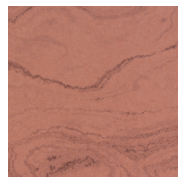
ST01 TRAVERTINE



ST50 TRAVERTINE



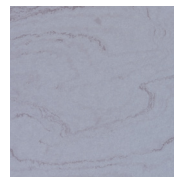
ST64 TRAVERTINE



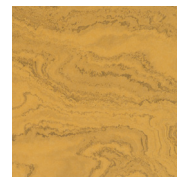
ST17 TRAVERTINE



ST83 TRAVERTINE



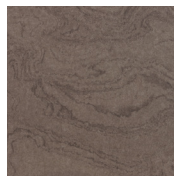
ST66 TRAVERTINE



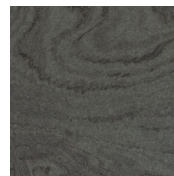
ST63 TRAVERTINE



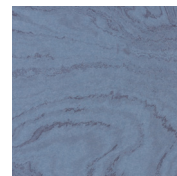
ST18 TRAVERTINE



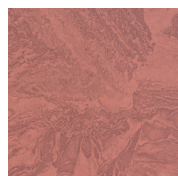
ST34 TRAVERTINE



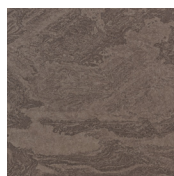
ST11 TRAVERTINE



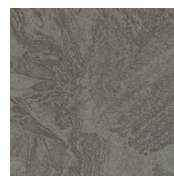
ST26 TRAVERTINE



ST17 GRANITE



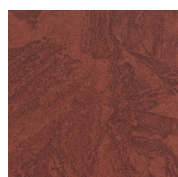
ST34 GRANITE



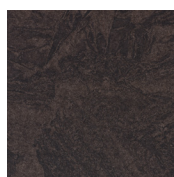
ST11 GRANITE



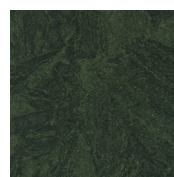
ST63 GRANITE



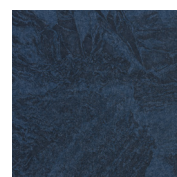
ST18 GRANITE



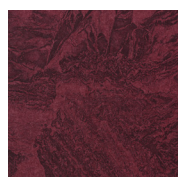
ST35 GRANITE



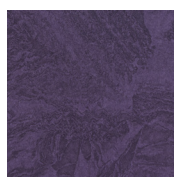
ST10 GRANITE



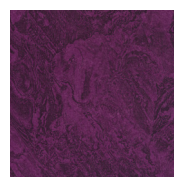
ST28 GRANITE



ST15 GRANITE



ST41 GRANITE



ST40 GRANITE

# TECH

## ACOUSTICS

ASTM C423-17: Type J Mounting

## FIRE RATING

ASTM E-84 - Class A

## VOC

ASTM D5116 Compliant

# DETAILS

## DURABILITY

Contract

## LEAD TIME

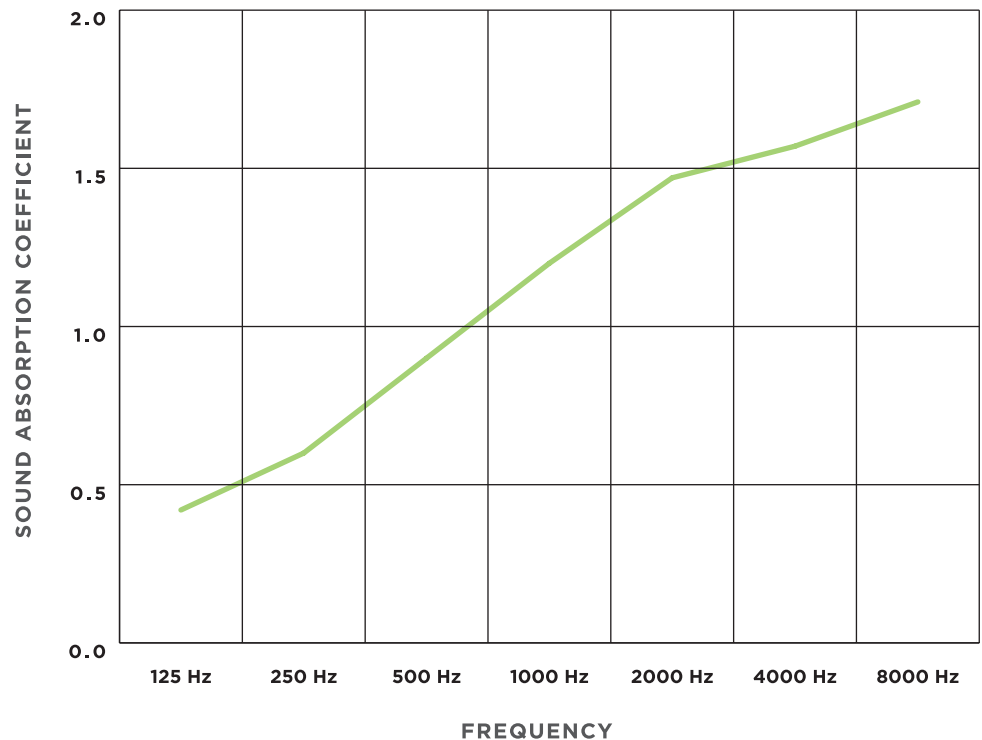
Check the Turf website for current lead times.

## WARRANTY

Three (3) years

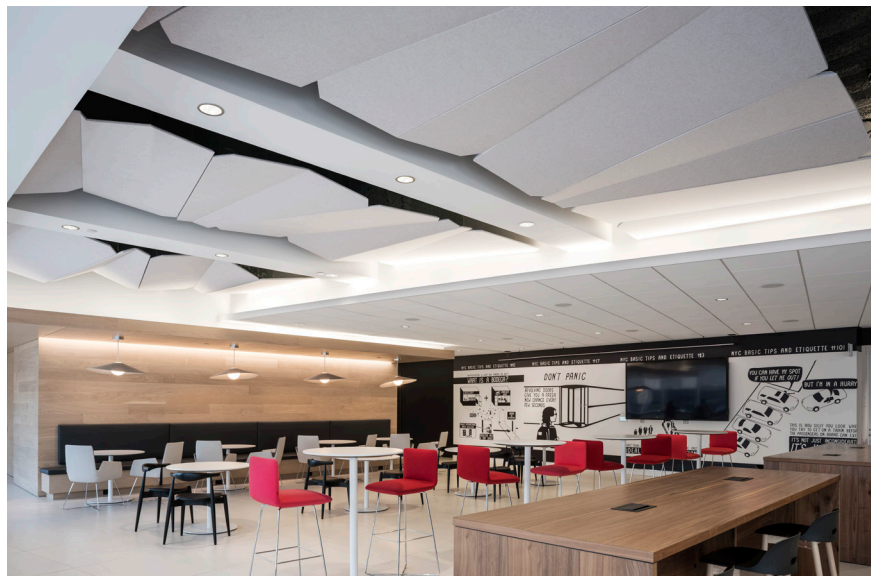
## MAINTENANCE

Vacuum to remove any particulate matter and air-borne debris or dust. Compressed air can be used to dust the material in difficult to reach areas for large assemblies. Contact us for more information relative to spot cleaning.



NRC = 1.05

ASTM C 423-17: Type J Mounting - The test specimen was designated by the sponsor as Plate horizontal baffle (3 units, spaced 1 in. apart).



Custom Plate Installation, PwC office design by Vocon, photo by Matthew Carbone