

## **INTERSECT**

folded wall tile

Create beautiful patterns and textured sound with Intersect. This three-dimensional, folded wall tile can be woven throughout your space while providing high performance acoustics. The origami-inspired shape transforms a flat material into soft, curved forms. Intersect's unique shape allows you experiment with a variety of patterns through offsets and repetition.



# SPECS

## PRODUCT

Intersect

## CONTENT

Polyester (PET) felt  
60% pre-consumer recycled.

# DIMENSIONS

## HEIGHT

16.25"H

## WIDTH

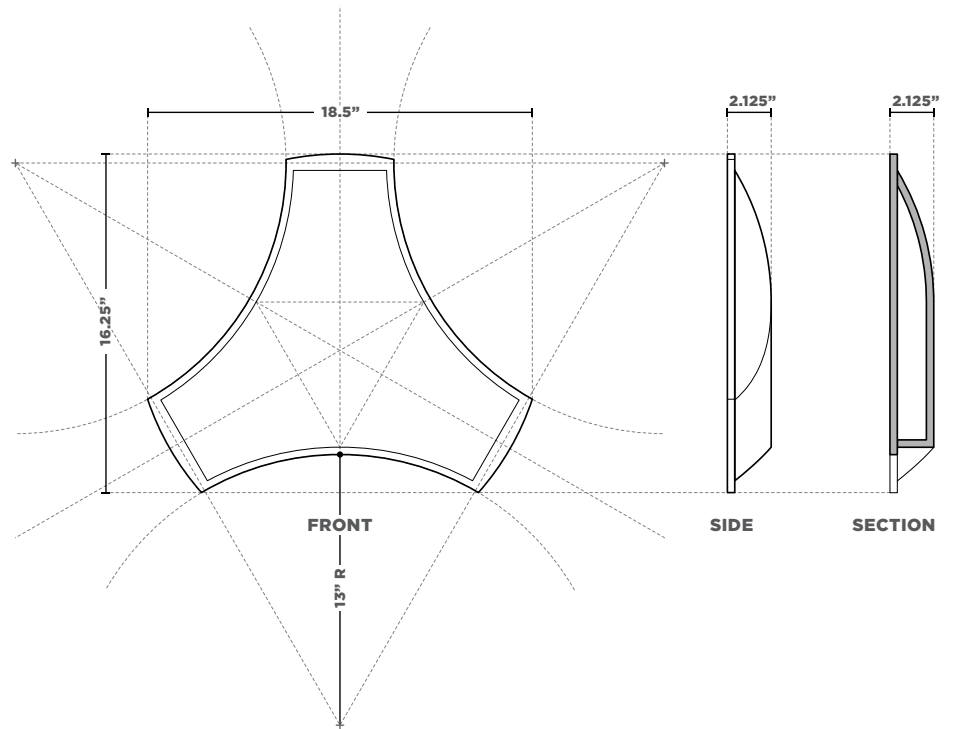
18.5"W

## DEPTH

2.125"D

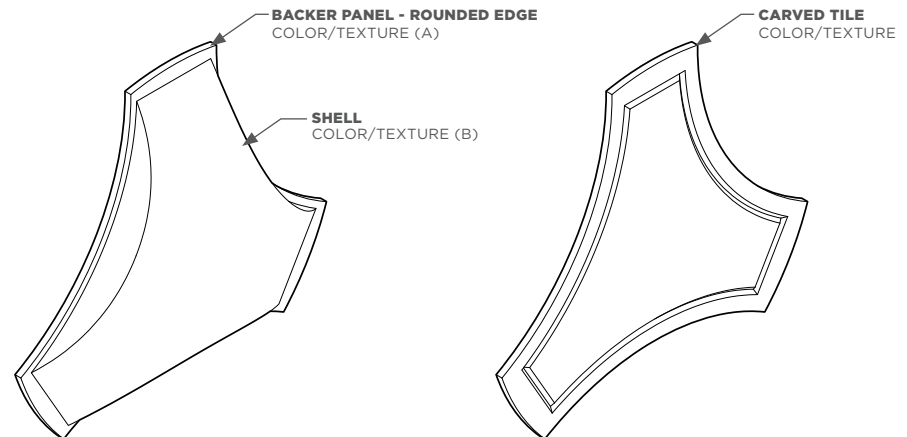
## FELT THICKNESS

9 mm



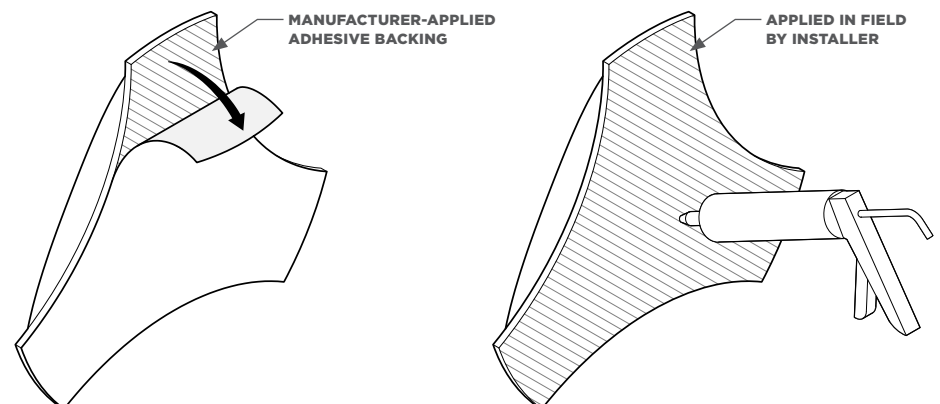
# COLOR

Intersect's backer panel and shell are both made from our 9 mm material. They can be specified as the same or separate colors.



# CONNECTIONS

Intersect can be installed using a pre-applied adhesive backing or by construction adhesive applied in field.

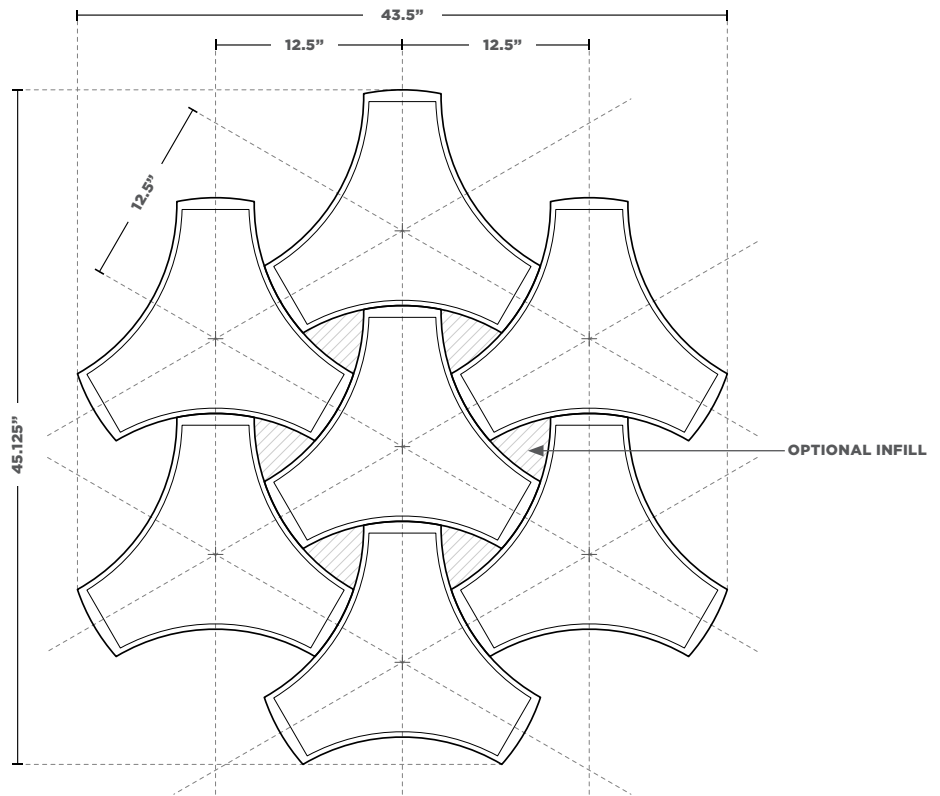


# LAYOUTS

Intersect can be installed in a variety of ways that explore pattern, texture, and color.

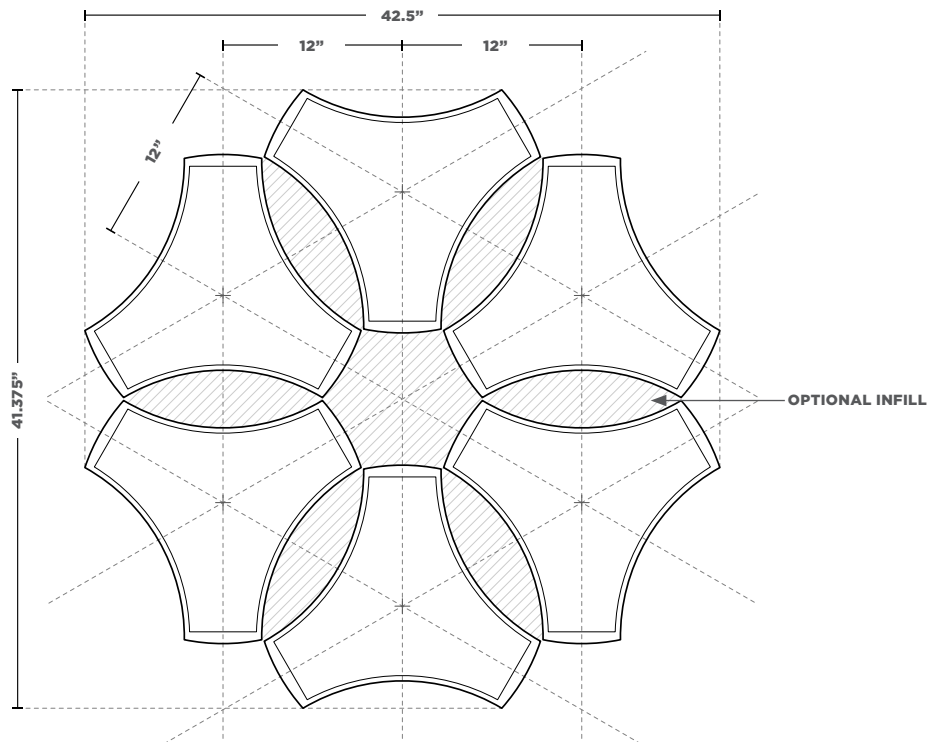
## WEAVE

Tiles nest against each other in this high-density configuration. Tiles can be rotated off-axis in 30 degree increments for additional variety.



## FLORET

Alternating orientations of the tile allow the points to meet.

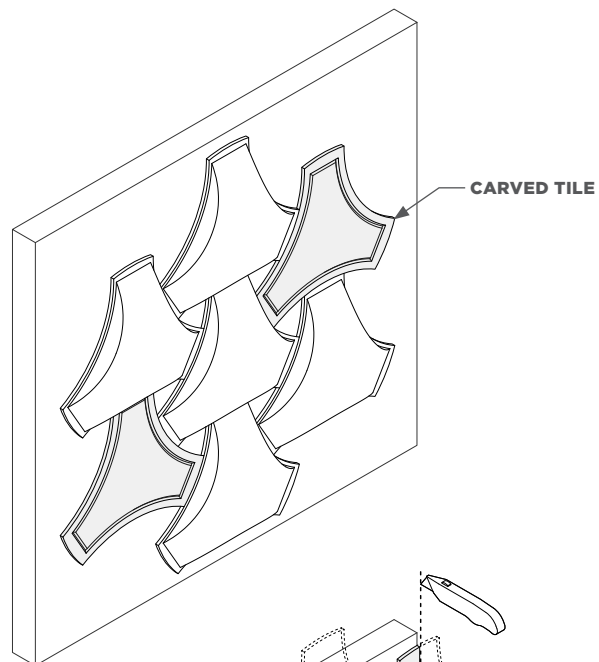


# OPTIONS

Please note there may be an upcharge for selected options.

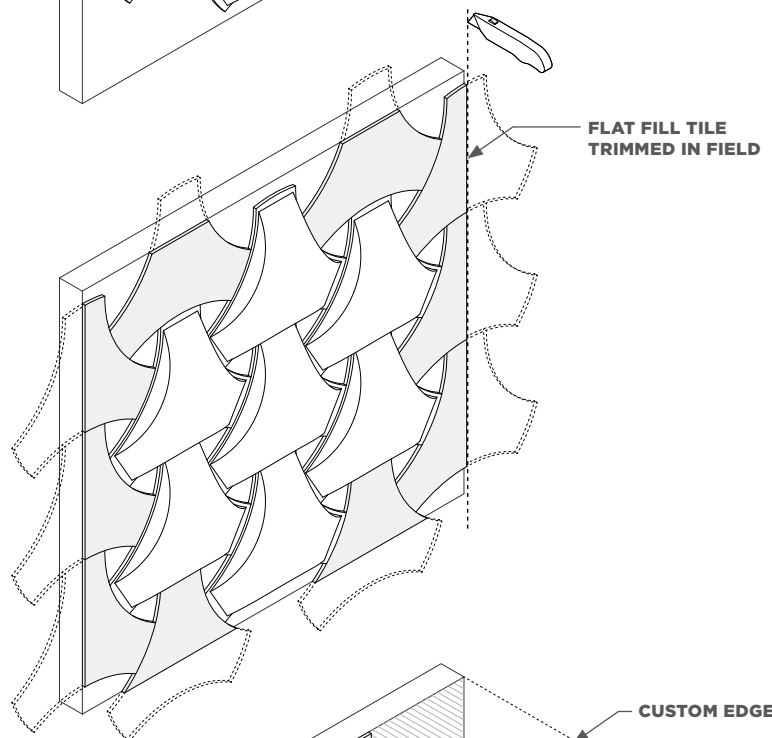
## MIX AND MATCH

Pair Intersect tiles with a custom carved tile to explore patterns with varying depths and acoustic performance.



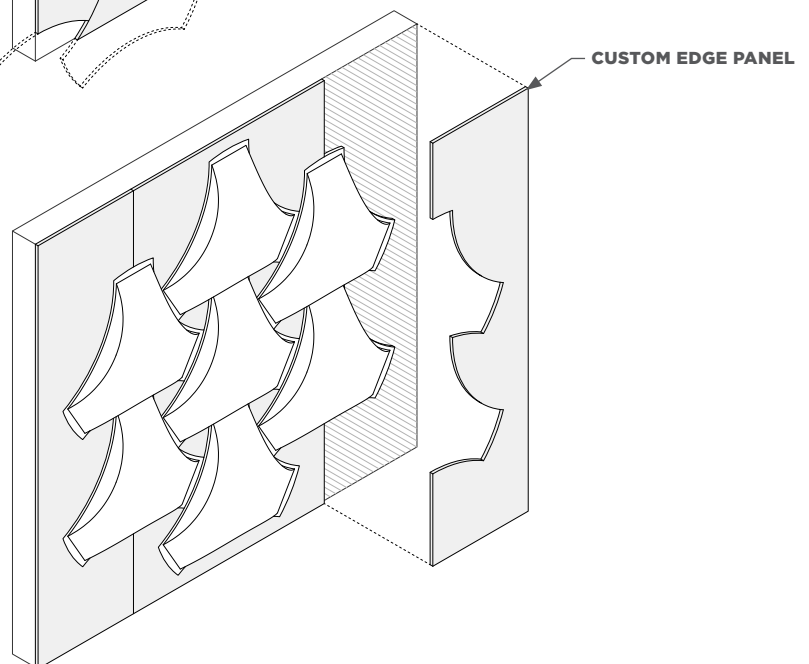
## FULL BLEED

Flat fill tiles can be used to carry the profile to the edge of your wall surface. These tiles can be trimmed in field.



## INFILL PANEL

Full infill panels can be used to cover the wall surface and provide a finished look to your project.





# 9MM FELT

This product is made with 9 mm PET felt board. The process used to create PET felt often results in a heathered effect where multiple tones are present. Slight variations in color should be expected when using this sustainable material.

Felt thickness is 9 mm +/- 0.5 mm.

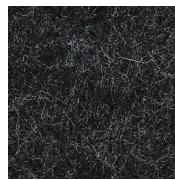
**Monitors and printers vary. Please request a material sample to verify felt colors.**

## Looking for the old color palette?

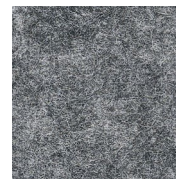
Old colors are still available for legacy projects, but check with us for availability if you're interested in using them for new projects.



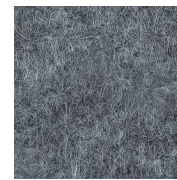
07 BLACK



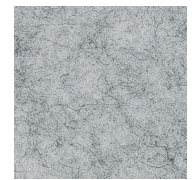
06 CHARCOAL



09 DAMASCUS



98 STORM



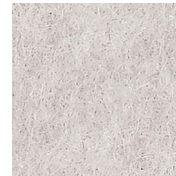
04 LIGHT GREY



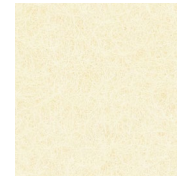
66 PEWTER



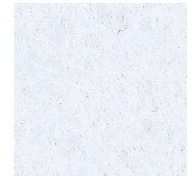
50 IVORY



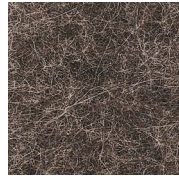
01 CREAM



33 LUMINARY



05 WHITE



35 BARK



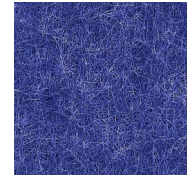
34 TONAL TAUPE



82 BARLEY



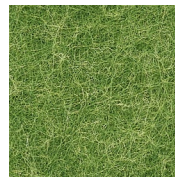
83 HOLLAND OATS



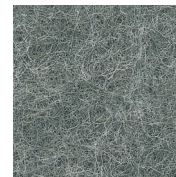
24 ROYAL BLUE



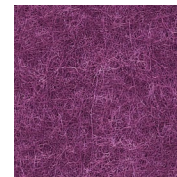
10 TOPO GREEN



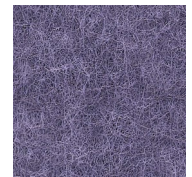
12 GRASSHOPPER



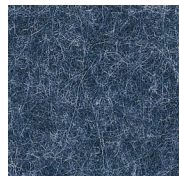
11 CELADON



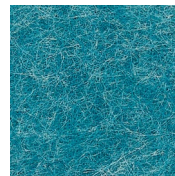
40 MAGENTA



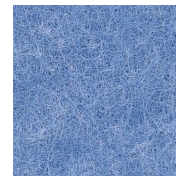
41 DRIED LAVENDER



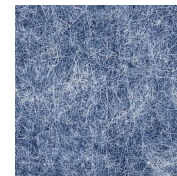
28 INDIGO



30 CYAN



31 AZURE



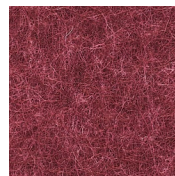
27 JEAN JACKET



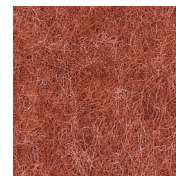
26 FADED DENIM



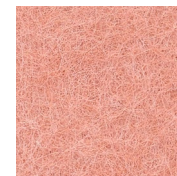
23 RED



15 MERLOT



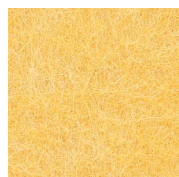
18 ULTISOL



17 BLUSH



43 ORANGE CRUSH



63 SAFFLOWER



64 PLANTAIN

# TEXTURES

Invite nature into your space with our wood-inspired textures. Digital printing on felt ensures a unique and realistic grain with virtually no repeats.

**\* There is an additional product cost for Wood Textures.**

## CUSTOM

Endless customization options are available, including color and grain matching to your sample.

**\* Please note there is additional lead time for custom matching. Texture and customization will incur additional costs beyond our standard 9mm options.**

Felt thickness is 9 mm +/- 0.5 mm.

**Monitors and printers vary. Please request a material sample to verify felt colors.**



D01 WHITE ASH



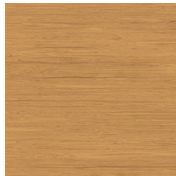
D02 SILVER TEAK



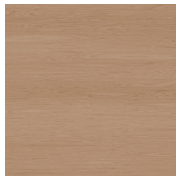
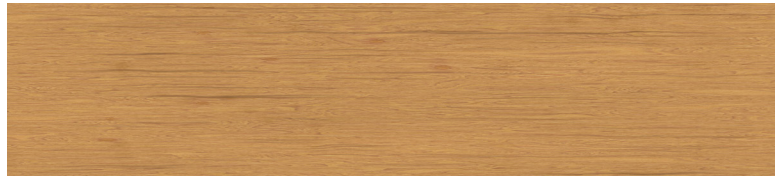
D03 CLEAR MAPLE



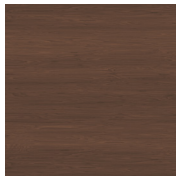
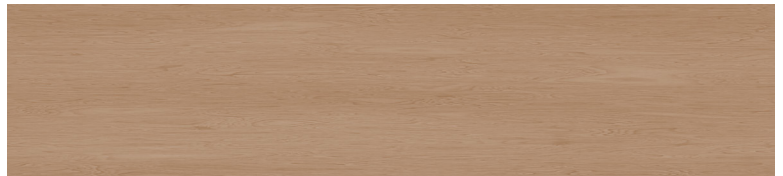
D04 WASHED ASH



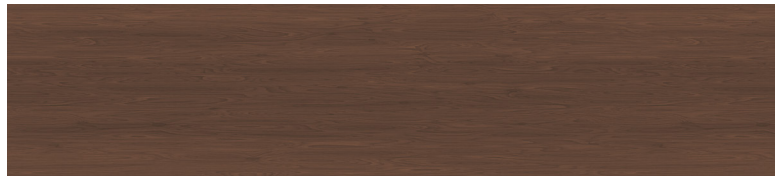
D05 MEDIUM OAK



D06 PLANKED OAK



D07 DARK WALNUT



D08 BLACK PEAR





# TECH

## ACOUSTICS

ASTM E795: A Mounting

## FIRE RATING

ASTM E-84 - Class A

## VOC

ASTM D5116 Compliant

# DETAILS

## DURABILITY

Contract

## LEAD TIME

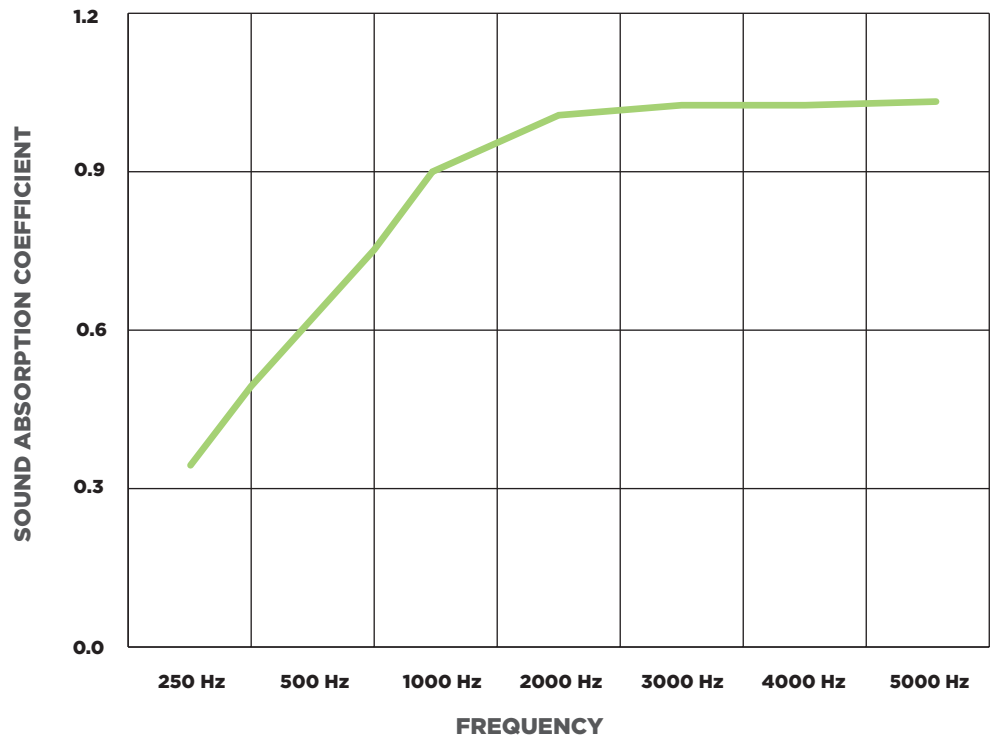
Check the Turf website for current lead times.

## WARRANTY

Three (3) years

## MAINTENANCE

Vacuum to remove any particulate matter and air-borne debris or dust. Compressed air can be used to dust the material in difficult to reach areas for large assemblies. Contact us for more information relative to spot cleaning.



**NRC = .75 with Infill Panel**

ASTM E795: A Mounting - The Intersect Tiles were arranged in a weave pattern shown in the previous pages. The interior fill panels were installed between the Intersect Tiles and the border panels were installed along the outer edges to create a rectangular test specimen. The perimeter of the test specimen was not sealed.

