

## STATIC screen

### Still Life

Lock in your look with Static, the acoustic wall partition system that's unshakably chic. Here, form meets function with its high-performance sound absorption and wide variety of available patterns and colors, including custom patterns created by our design team. Whether hung or mounted to a wall, Static is the picture of quiet brilliance with its straightforward installation and ready-steady style.

PATENT PENDING



# SPECS

**PRODUCT**

Static Wall

**CONTENT**

Polyester (PET) felt  
60% pre-consumer recycled

**SIZING**

Custom is TURF's standard.  
Everything is made to order, and  
can be adapted to fit unique  
spaces.

## DIMENSIONS

**INDIVIDUAL PANEL SIZE**

Up to 48" x 120"

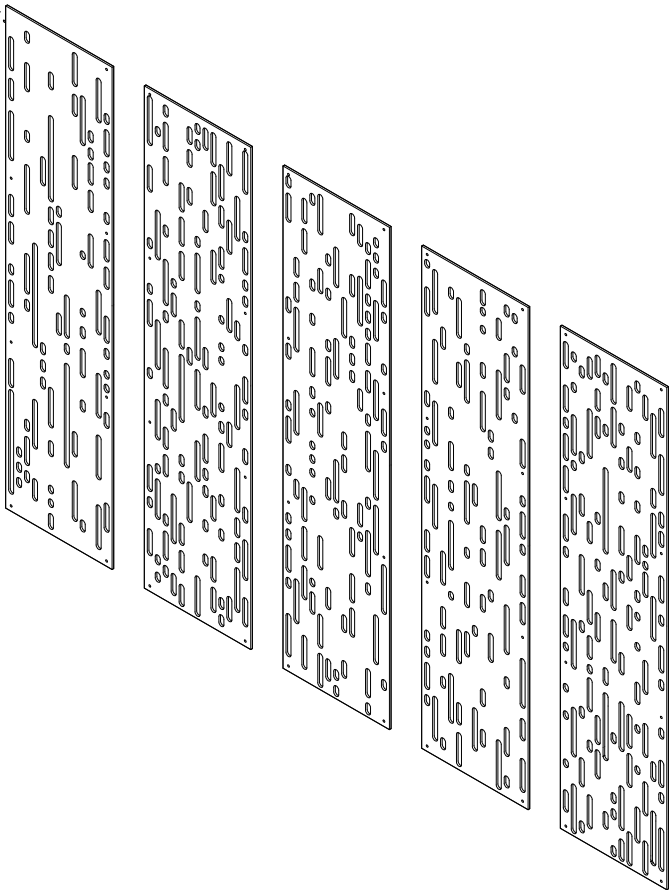
**THICKNESS**

9 mm

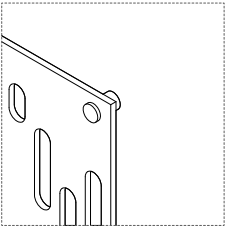
## CONNECTIONS

**ALUMINUM STANDOFFS**

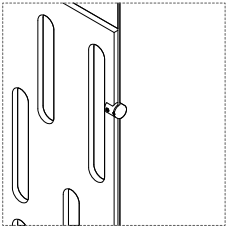
(Supplied by TURF)



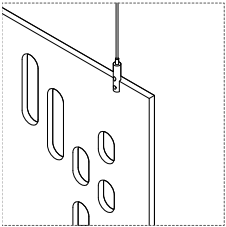
**STANDOFF**



**SIDE MOUNT**



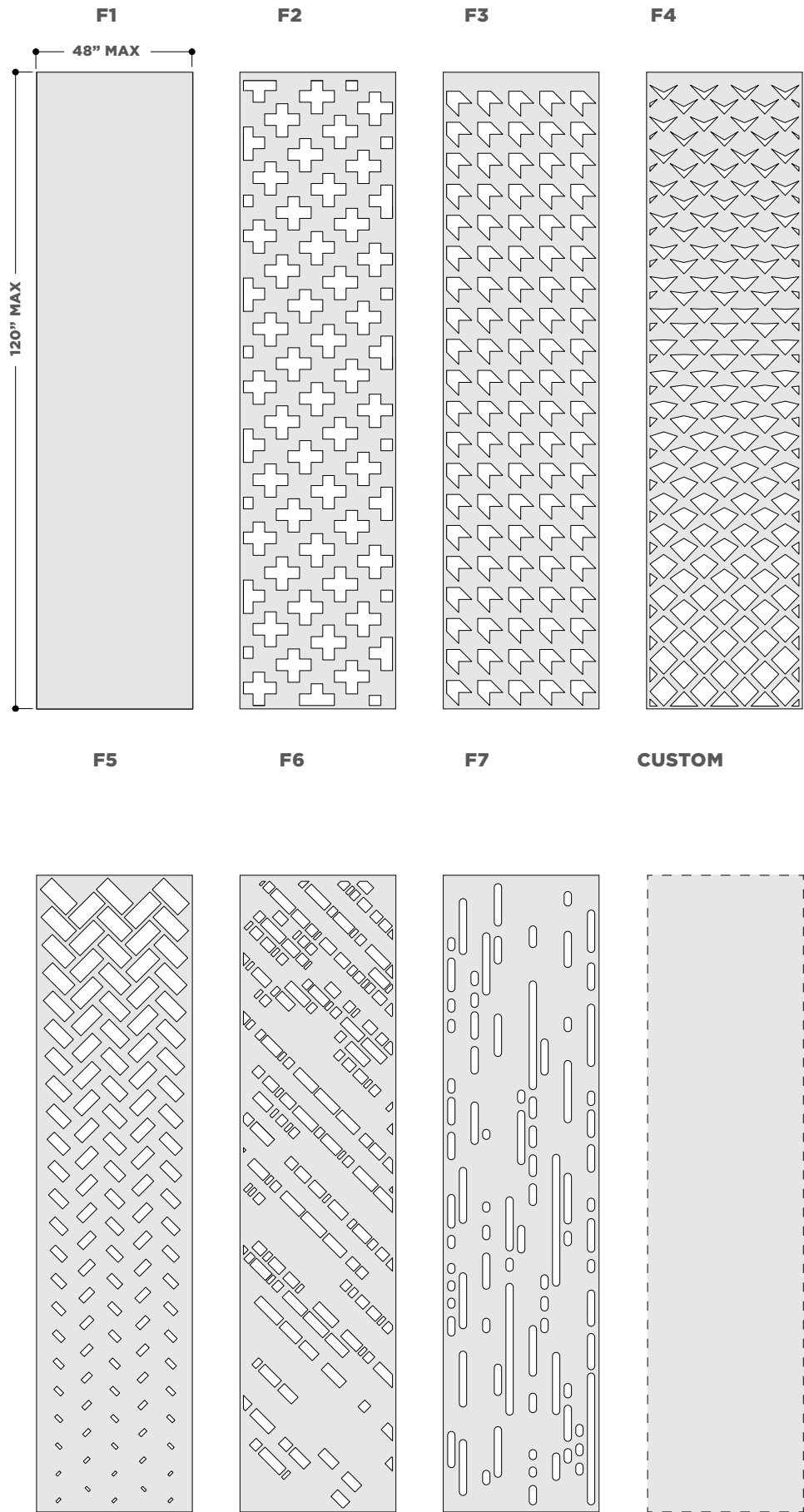
**TOP MOUNT**



# PATTERNS

## FRONT ELEVATION

Pattens shown will be modified to fit the size of the panels ordered.  
Pattern will fill pattern area.





# 9MM FELT

This product is made with 9 mm PET felt board. The process used to create PET felt often results in a heathered effect where multiple tones are present. Slight variations in color should be expected when using this sustainable material.

Felt thickness is 9 mm +/- 0.5 mm.

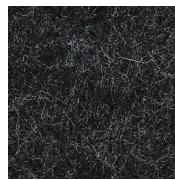
**Monitors and printers vary. Please request a material sample to verify felt colors.**

## Looking for the old color palette?

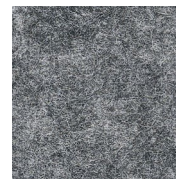
Old colors are still available for legacy projects, but check with us for availability if you're interested in using them for new projects.



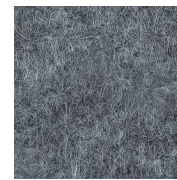
07 BLACK



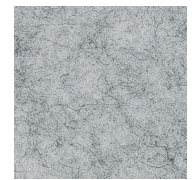
06 CHARCOAL



09 DAMASCUS



98 STORM



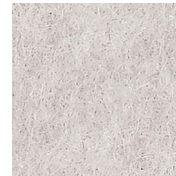
04 LIGHT GREY



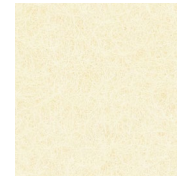
66 PEWTER



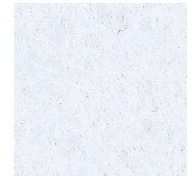
50 IVORY



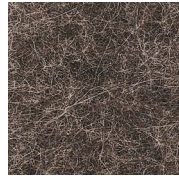
01 CREAM



33 LUMINARY



05 WHITE



35 BARK



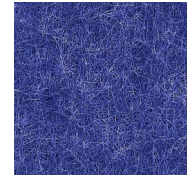
34 TONAL TAUPE



82 BARLEY



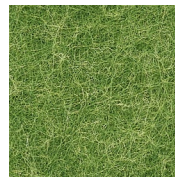
83 HOLLAND OATS



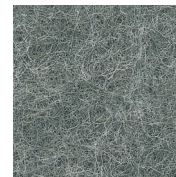
24 ROYAL BLUE



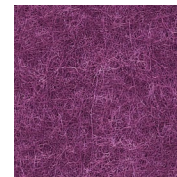
10 TOPO GREEN



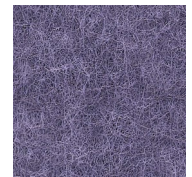
12 GRASSHOPPER



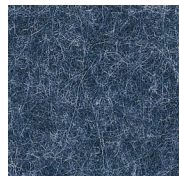
11 CELADON



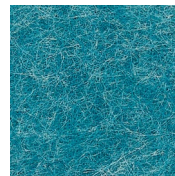
40 MAGENTA



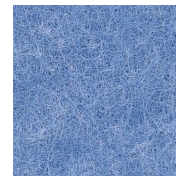
41 DRIED LAVENDER



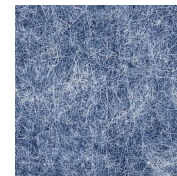
28 INDIGO



30 CYAN



31 AZURE



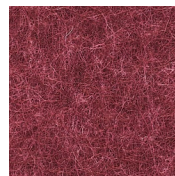
27 JEAN JACKET



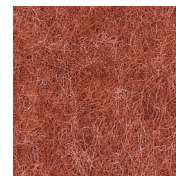
26 FADED DENIM



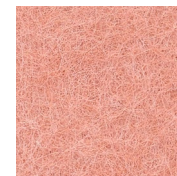
23 RED



15 MERLOT



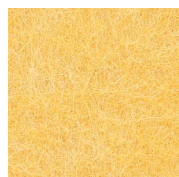
18 ULTISOL



17 BLUSH



43 ORANGE CRUSH



63 SAFFLOWER



64 PLANTAIN

# TECH

## ACOUSTICS

ASTM C423-17: Type J Mounting

## FIRE RATING

ASTM E-84 - Class A

## VOC

ASTM D5116 Compliant

# DETAILS

## DURABILITY

Contract

## LEAD TIME

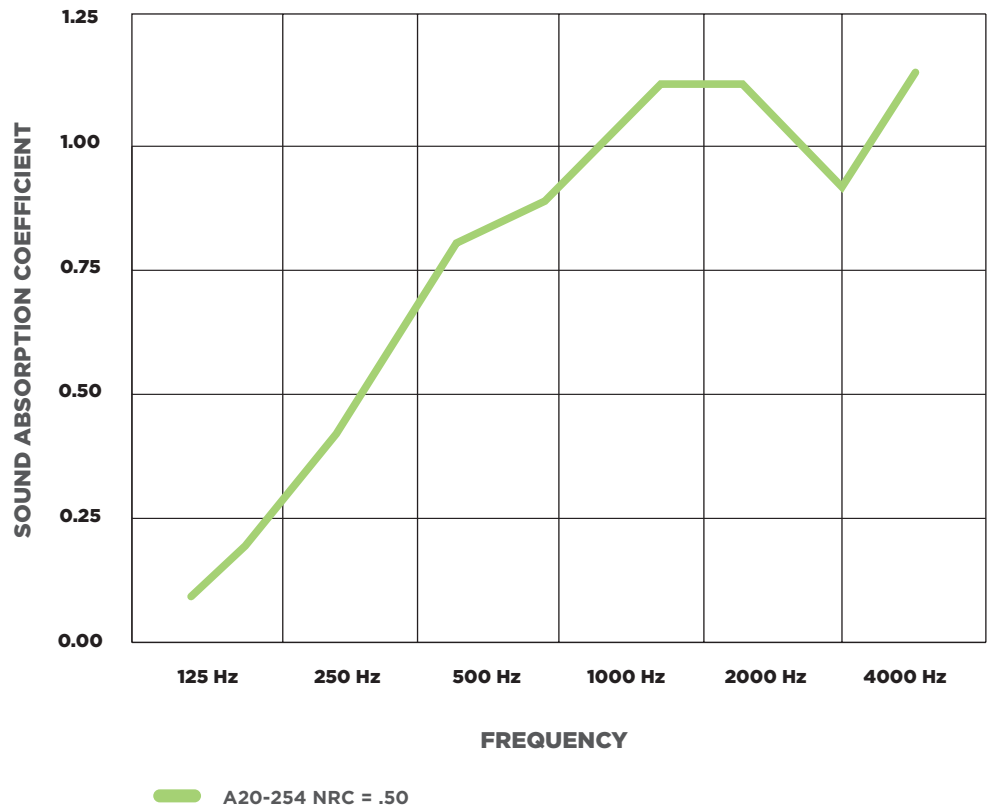
Check the Turf website for current lead times.

## WARRANTY

Three (3) years

## MAINTENANCE

Vacuum to remove any particulate matter and air-borne debris or dust. Compressed air can be used to dust the material in difficult to reach areas for large assemblies. Contact us for more information relative to spot cleaning.



ASTM C 423-17: Type J Mounting: The specimen is an array of spaced sound absorbing baffles suspended from a cable approximately 1206.5mm (47.5 in.) above the horizontal test surface. This approximates the mounting method of a typical ceiling baffle installation. The baffles were evenly distributed in four rows four units each. Baffles were spaced 305 (12 in.) apart. Rows were spaced 762mm (30 in. apart)

