

Acoustic Ceiling Baffle

Block

Elegantly built

Built for elegance, form meets function in Block. Its simple, square profile offers a beautiful base while a range of colors and textures bring imaginative opportunities to please the eyes and ears alike.



Image by The Right Exposure

How To Specify

Key Information

Block Baffle can fill your space in a variety of ways. Consider these questions as you design your layout.

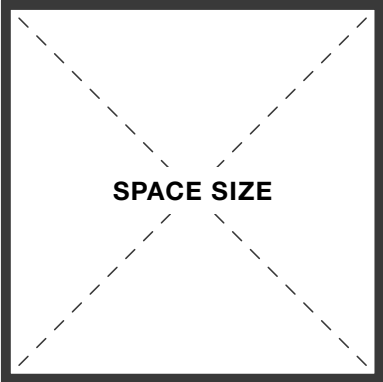
Spacers & End Caps

Turf supplies Spacers & End Caps for baffle orders that require P1000T unistrut.

Follow the link below for more detailed information.

[Spacers & End Caps Guide](#)

1

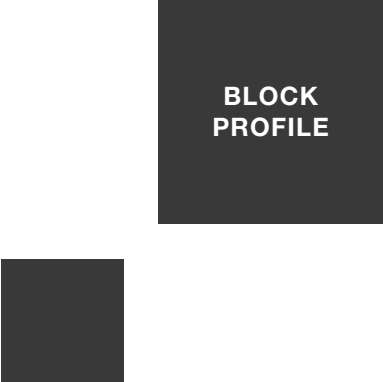


SPACE SIZE

What are the dimensions of the space?

PAGE 3

2

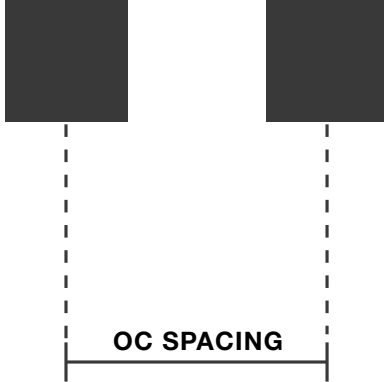


BLOCK PROFILE

What Block profile do you need?

PAGE 4

3

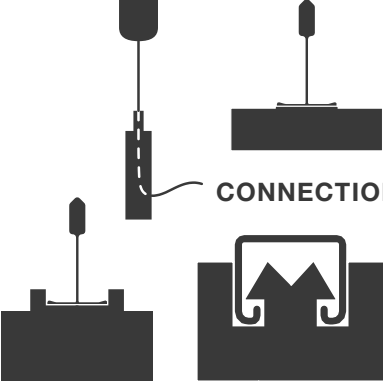


OC SPACING

What is the on center spacing?

PAGE 4

4




CONNECTION

How will Block Baffle mount to the ceiling?

PAGE 4-5

5



COLOR

What is the color or texture?

PAGE 8-10



Dimensions

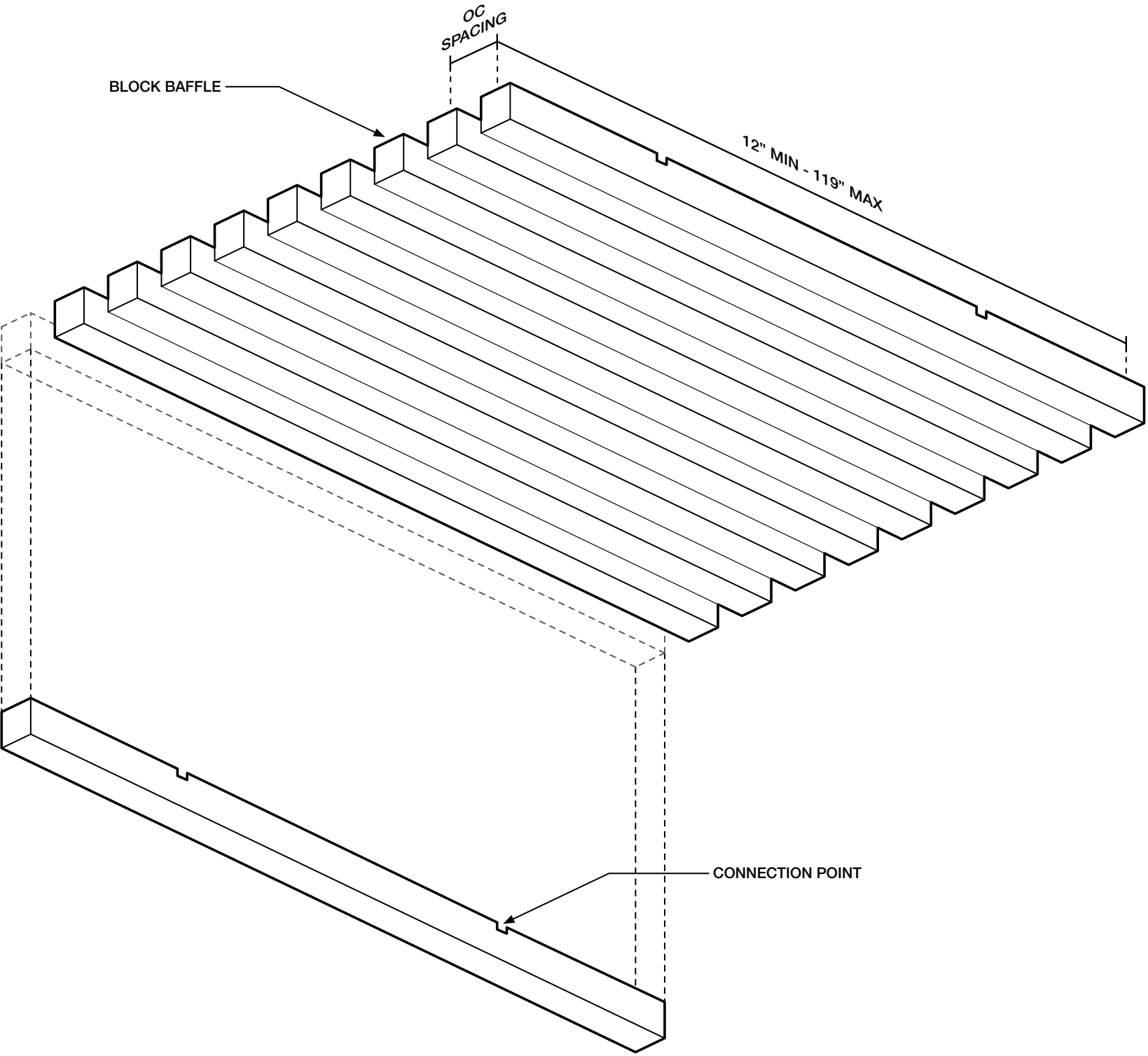
Variable Length	12”L Min - 119”L Max
Small Range	12” ≤ L < 36”
Medium Range	36” ≤ L < 72”
Large Range	72” ≤ L ≤ 119”
Standard Profiles	3”W x 3”D, 5.5”W x 5.5”D
	Custom profiles available upon request.

Connection Options

P1000T Unistrut	FeltLock
9/16” or 15/16” Tee Grid	GridLock
Cable Hung	Cable To Deck
Magnetic	Exposed Magnet
	See our Recommended & Alternative Connections pages for more Connection options.

Color

9mm Palette	Block Baffle can be specified in any of our 9mm felt colors or textures.
Color Match	Have another color in mind? Our UV printing process can match almost any hue.



ALL DIMENSIONS NOMINAL UNLESS NOTED OTHERWISE



Recommended Connections

Connection Spacing

60" OC Max

Spacing varies per project. Baffles require a minimum of two connection points.

FeltLock

Products with Turf's patented FeltLock flex and compress to insert into Unistrut.

P1000T Unistrut, raw galvanized finish or powder-coated, hardware is required.

Painted unistrut may damage FeltLock installations and will void the product warranty.

Cable To Deck

Baffles with embedded cable grippers snap into deck-mounted aircraft cables.

10' aircraft cable supplied by Turf should be trimmed in the field as needed.

GridLock

The GridLock attachment flexes to grasp the tee grid. GridLock is incompatible with ACT tiles.

9/16" or 15/16" flat tee grid, or 9/16" bolt-slot tee grid is required.

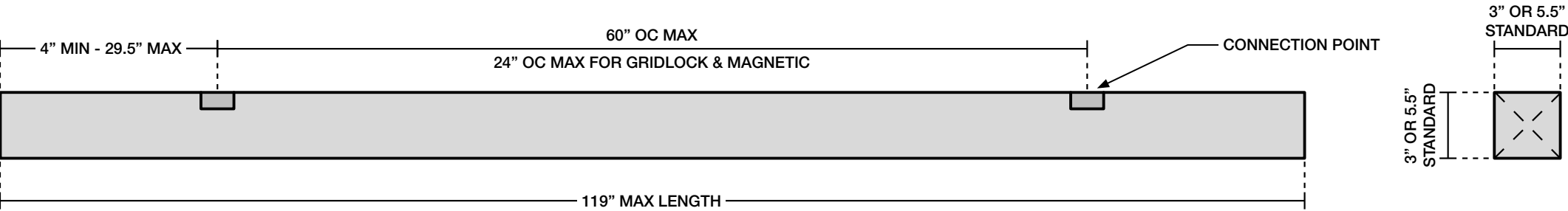
The maximum spacing for this connection is 24" OC.

Exposed Magnetic

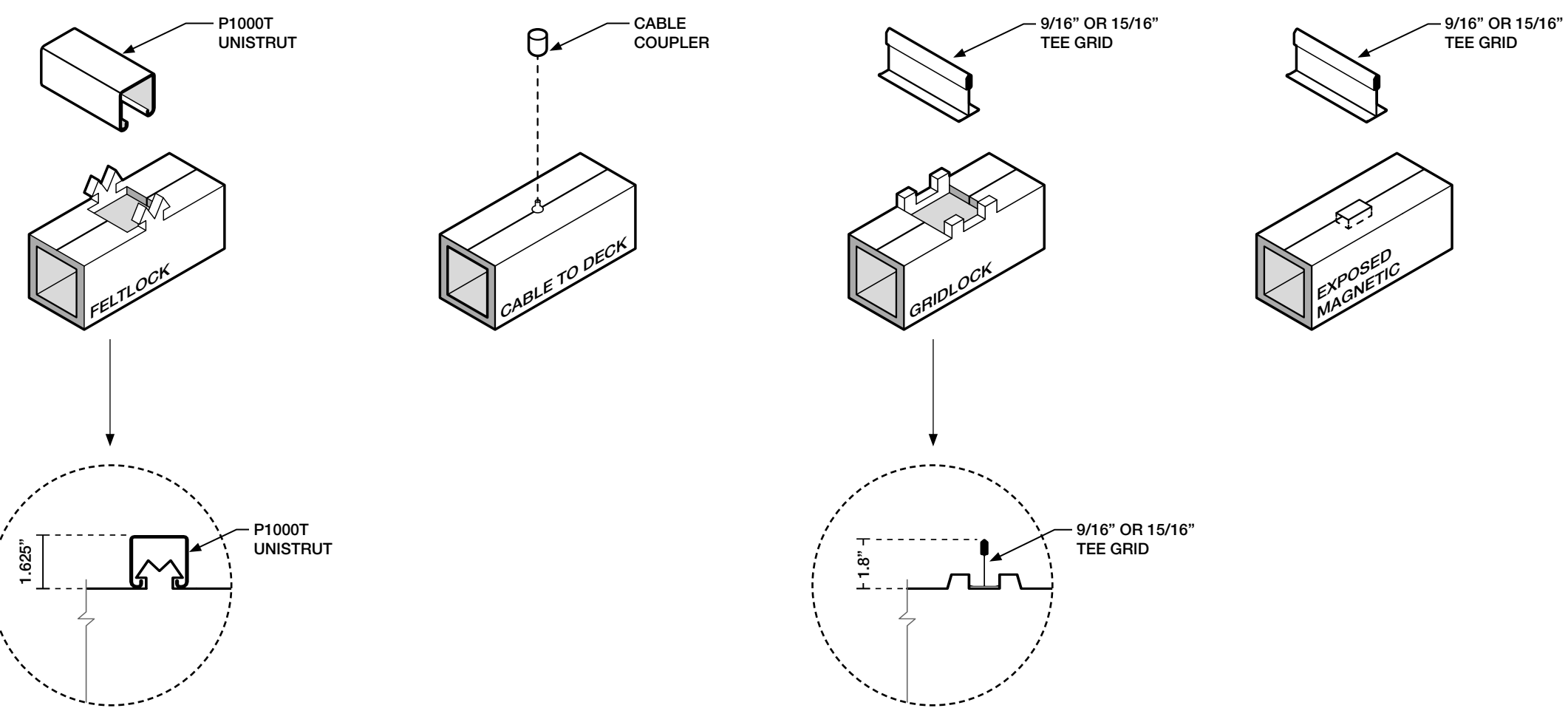
A powerful attachment to 9/16" or 15/16" tee grid for secure and easy installation.

The maximum spacing for this connection is 24" OC.

CONNECTION SPACING



RECOMMENDED CONNECTIONS



ALL DIMENSIONS NOMINAL UNLESS NOTED OTHERWISE



Alternative Connections

Additional Options

Beyond our standard connections, we offer the following connection options for Block Baffle too.

P1000T Unistrut

Cable to Unistrut
Threaded Rod to Unistrut
Rotated FeltLock

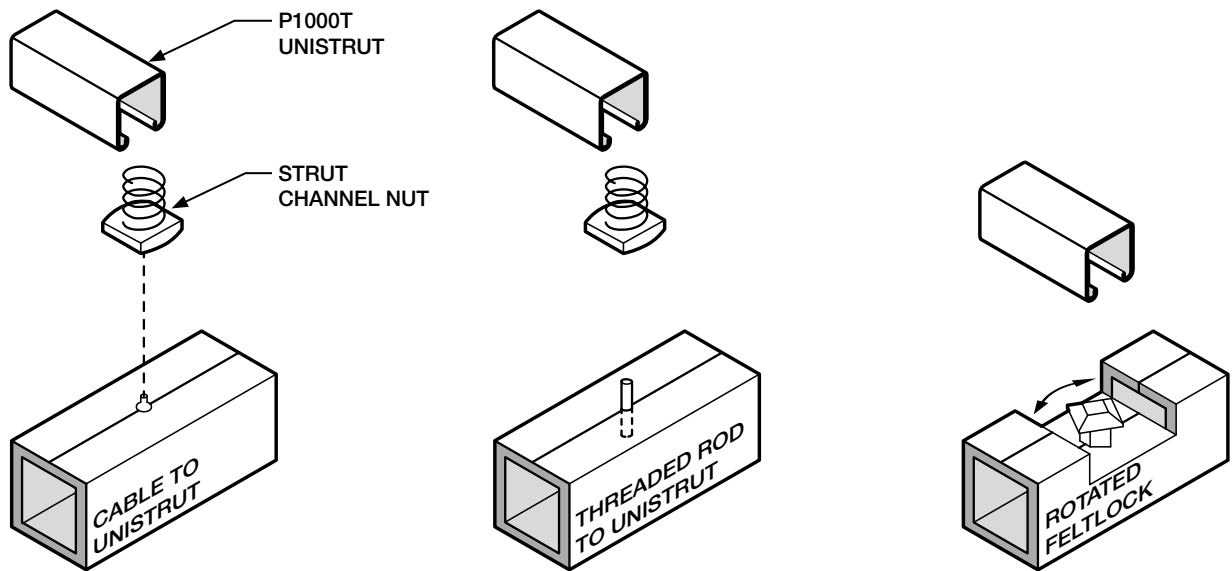
9/16" or 15/16" Tee Grid

Cable to Tee Grid
Embedded Nut to Bolt-Slot
Grid Clip

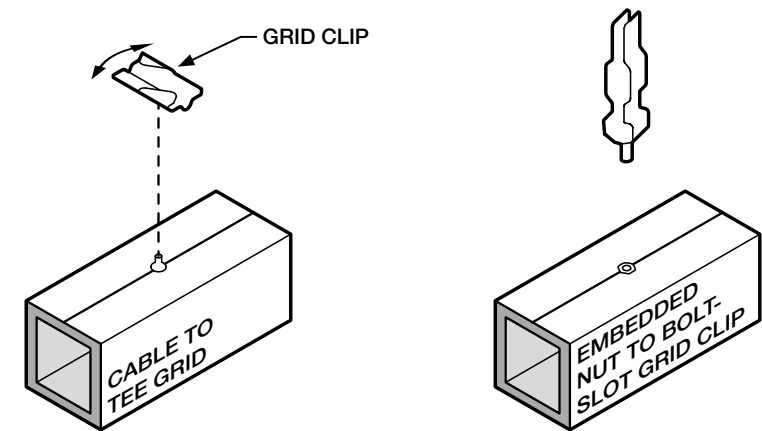
Miscellaneous

Embedded Nut
Threaded Rod

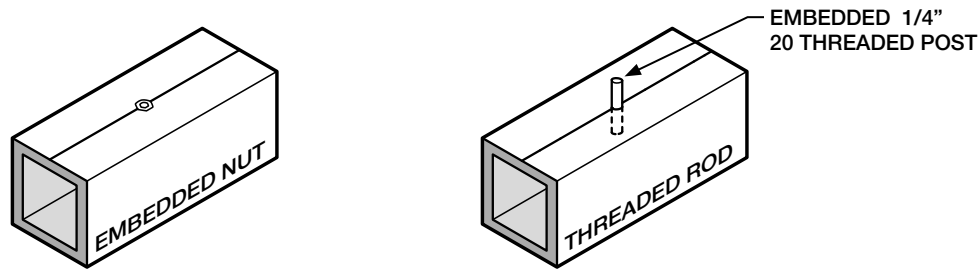
ALTERNATIVE UNISTRUT CONNECTIONS



ALTERNATIVE TEE GRID CONNECTIONS



ALTERNATIVE MISCELLANEOUS CONNECTIONS



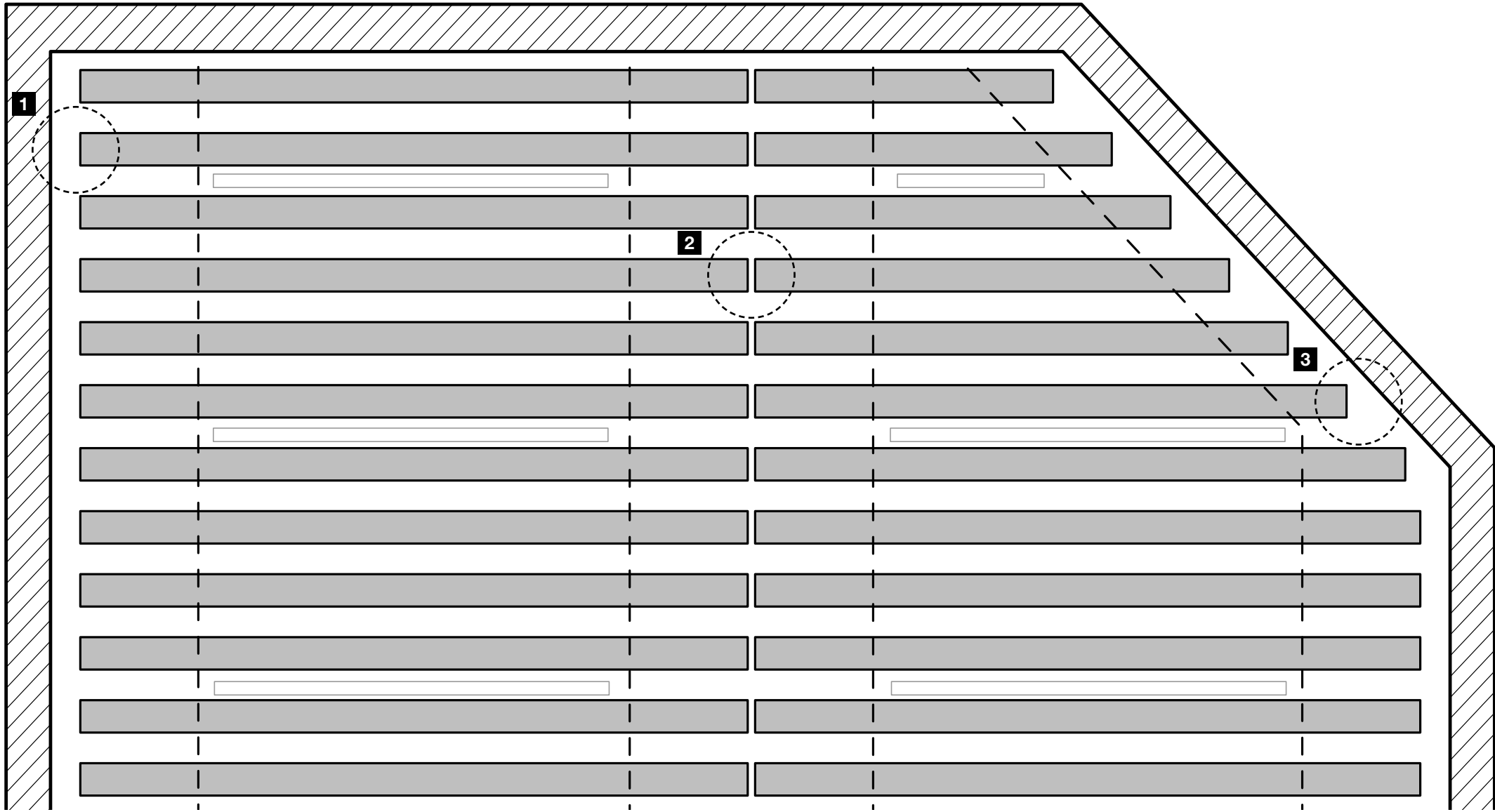
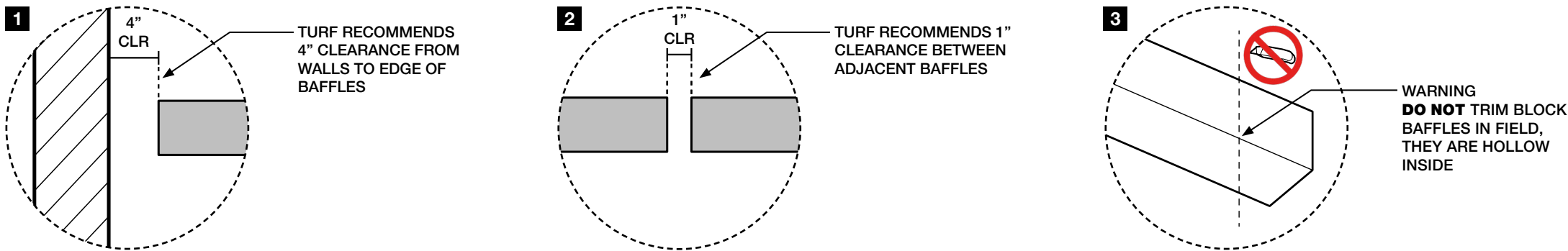
Layout Considerations

- Wall Clearance

Turf recommends a 4" clearance from the wall to our baffles.
- Adjacent Baffle Clearance

Turf recommends a 1" gap between all rows of baffles. This clearance supports a uniform look and build.
- Trim in Field

Block Baffle cannot be trimmed in field, baffles are hollow inside.



BLOCK BAFFLE - EXAMPLE RCP

Tech

Acoustics	ASTM C 423-17: Type J
Fire Rating	ASTM E-84 – Class A
VOC	ASTM D5116 Compliant

Details

Lead Time	Check the Turf website for current lead times.
Warranty	Five (5) years
Maintenance	Vacuum to remove any particulate matter and air-borne debris or dust. Compressed air can be used to dust the material in difficult to reach areas for large assemblies. Contact us for more information relative to spot cleaning.
Weight	Turf products cannot support the weight of any other items in field.

Acoustic Rating

Block Baffle NRC				
Depth	6" OC	8" OC	10" OC	12" OC
3"	0.90	0.70	0.60	
5.4"		1.45	1.25	1.10

The table displays information for an array of sound absorbing baffles suspended by cables, evenly distributed in four rows of four units.

Certifications



Photograph by Monica Slaney



Image by Imperfct*



9mm Colors

Introducing Hues, our new 9mm color palette designed for the senses.

The 9mm PET felt board is used as our primary construction material. Select one of our coordinating neutrals to blend in, or go for a contrasting element with one of our hues.

The process used to create PET felt often results in a heathered effect where multiple tones are present. Slight variations in color should be expected when using this sustainable material.

Felt Thickness
9mm +/-0.5 mm

Monitors and printers vary.
Please request a material sample to verify felt colors.



10 TOPO GREEN



12 GRASSHOPPER



11 CELADON



63 SAFFLOWER



64 PLANTAIN



43 ORANGE CRUSH



18 ULTISOL



17 BLUSH



23 RED



15 MERLOT



50 IVORY



33 LUMINARY



83 HOLLAND OATS



82 BARLEY



34 TONAL TAUPE



35 BARK



28 INDIGO



30 CYAN



24 ROYAL BLUE



31 AZURE



27 JEAN JACKET



26 FADED DENIM



40 MAGENTA



41 DRIED LAVENDER



66 PEWTER



05 WHITE



01 CREAM



04 LIGHT GREY



98 STORM



09 DAMASCUS



06 CHARCOAL



07 BLACK



9mm Wood Textures

Invite nature into your space with our wood-inspired textures. Digital printing on felt ensures a unique and realistic grain with virtually no repeats.

There is an additional product cost for Wood Textures.

Please note there is additional lead time for custom matching. Texture and customization will incur additional costs beyond our standard 9mm options.

Felt Thickness
9mm +/-0.5 mm

Monitors and printers vary.
Please request a material sample to verify felt colors.



D01 WHITE ASH



D02 SILVER TEAK



D03 CLEAR MAPLE



D04 WASHED ASH



D05 MEDIUM OAK



D06 PLANKED OAK



D07 DARK WALNUT



D08 BLACK PEAR

9mm Stone Textures

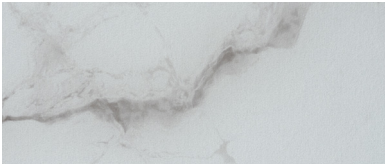
Inspired by nature, designed for felt. Our digitally printed Stone Textures capture the character and nuance of stone on top of a curated color collection from our Hues palette with virtually no repeats. The three patterns in this family each capture unique elements from the stones for which they are named.

There is an additional product cost for Stone Textures.

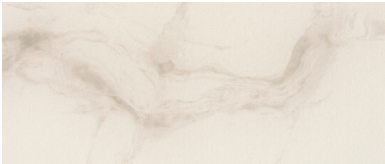
Turf has curated this collection to include only the best pattern and color combinations.

Felt Thickness
9mm +/-0.5 mm

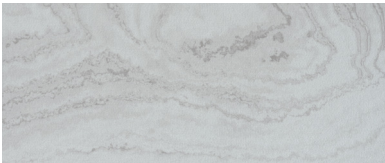
Monitors and printers vary. Please request a material sample to verify felt colors.



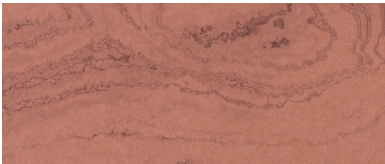
ST05 MARBLE



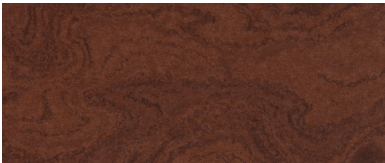
ST50 MARBLE



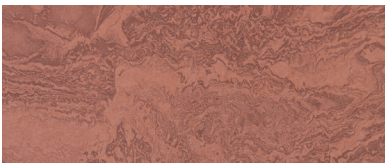
ST05 TRAVERTINE



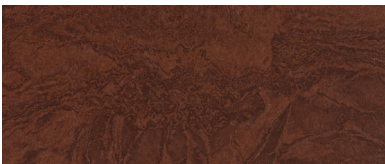
ST17 TRAVERTINE



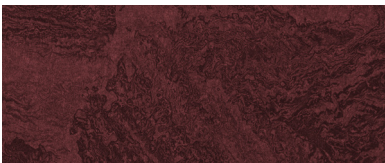
ST18 TRAVERTINE



ST17 GRANITE



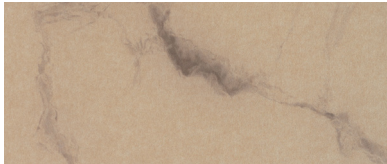
ST18 GRANITE



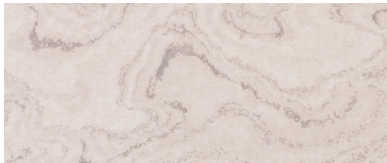
ST15 GRANITE



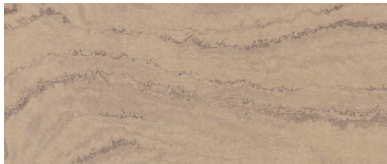
ST01 MARBLE



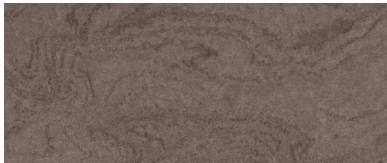
ST83 MARBLE



ST01 TRAVERTINE



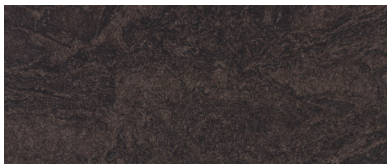
ST83 TRAVERTINE



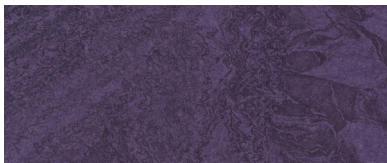
ST34 TRAVERTINE



ST34 GRANITE



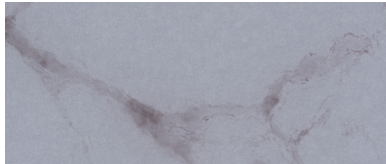
ST35 GRANITE



ST41 GRANITE



ST33 MARBLE



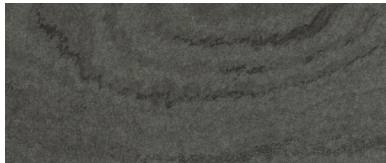
ST66 MARBLE



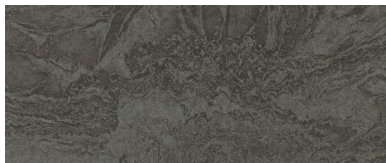
ST50 TRAVERTINE



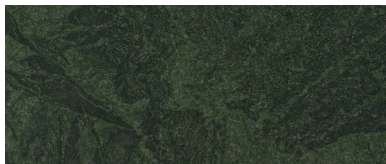
ST66 TRAVERTINE



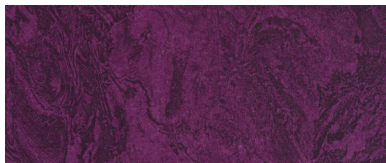
ST11 TRAVERTINE



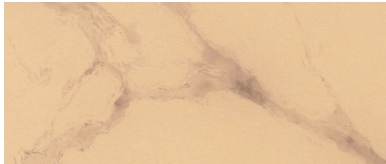
ST11 GRANITE



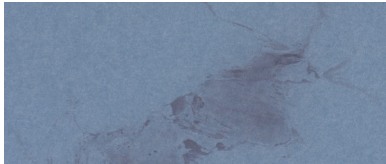
ST10 GRANITE



ST40 GRANITE



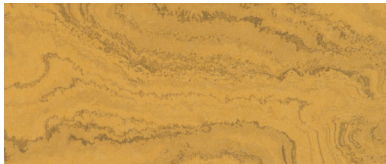
ST64 MARBLE



ST26 MARBLE



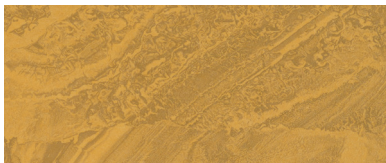
ST64 TRAVERTINE



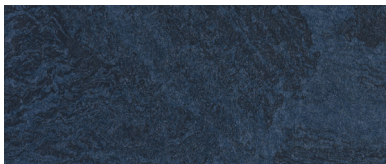
ST63 TRAVERTINE



ST26 TRAVERTINE



ST63 GRANITE



ST28 GRANITE

