

## **BLOCK** ceiling baffle

### Hip to be Square

Simplicity takes center stage with Block, the acoustic ceiling baffle system that allows for limitless architectural applications. Available in two different profiles and a variety of colors and custom textures. Block's simple square profile is engineered for imagination and can be customized to fit your design, proving that sound absorption is anything but dull.



PATENT PENDING

# SPECS

## PRODUCT

Block

## CONTENT

Polyester (PET) felt  
60% pre-consumer recycled

## SIZING

Custom is TURF's standard.  
Everything is made to order, and  
can be adapted to fit unique  
spaces.

# LENGTH

Small (12" - 35.5" L)  
Medium (36" - 71.5" L)  
Large (72" - 119" L)

# WIDTH

3" D  
5.5" D

Custom depths available upon  
request.

# SPACING

Typical O.C. spacing is 6" to 12".  
The closer together baffles  
are, the better the acoustic  
performance. Minimum O.C.  
spacing is equivalent to the  
specified width.

5.5" W



## TALL BLOCK BAFFLE



3" W



## SHORT BLOCK BAFFLE



WIDTH



## CUSTOM BLOCK BAFFLE



# CONNECTIONS

TURF has numerous connection systems designed to accommodate the most efficient installation method for each project:

## MOST COMMON

Feltlock  
Threaded Rod  
Cable to Deck

## ALSO AVAILABLE

Gridlock  
Embedded Nut  
Rotated Feltlock  
Cable to Unistrut  
All Thread  
Panel Clip  
Magnetic Connection

## FELTLOCK

Baffles with TURF's patented Feltlock will flex and compress to insert into unistrut, the industry's most universal installation hardware.

P1000 series unistrut is required for Feltlock baffles. Approved finish options are raw galvanized or powder-coated. Painted unistrut may damage Feltlock connection details and will void the product warranty.

## THREADED ROD

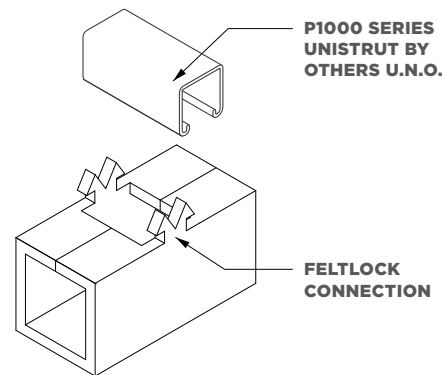
Integrated 1/4-20 posts allow for a variety of installation options that utilize standard threaded connections.

## CABLE TO DECK

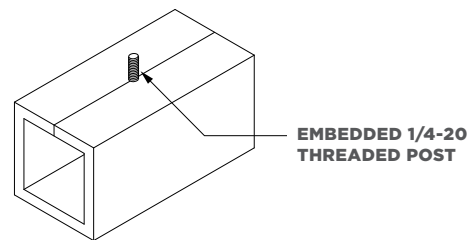
Embedded cable grippers mount via suspended aircraft cables. Because the cables can be arranged in any pattern, this connection offers the most design flexibility.

3/64" aircraft cable and coupler to deck supplied by TURF.

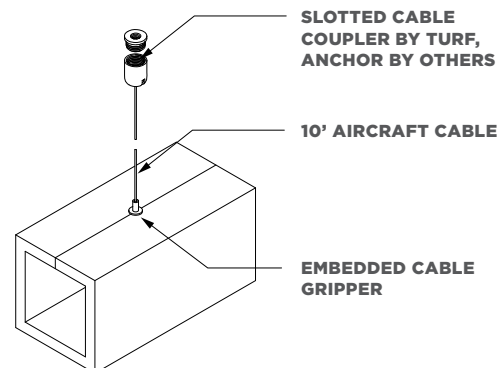
## FELTLOCK



## THREADED ROD



## CABLE TO DECK





# 9MM FELT

This product is made with 9 mm PET felt board. The process used to create PET felt often results in a heathered effect where multiple tones are present. Slight variations in color should be expected when using this sustainable material.

Felt thickness is 9 mm +/- 0.5 mm.

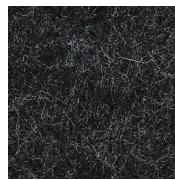
**Monitors and printers vary. Please request a material sample to verify felt colors.**

## Looking for the old color palette?

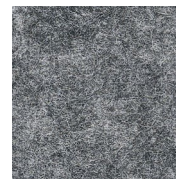
Old colors are still available for legacy projects, but check with us for availability if you're interested in using them for new projects.



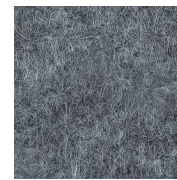
07 BLACK



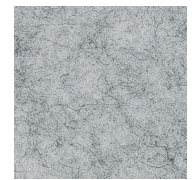
06 CHARCOAL



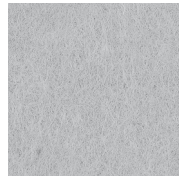
09 DAMASCUS



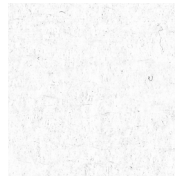
98 STORM



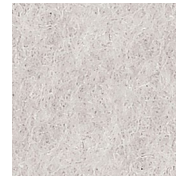
04 LIGHT GREY



66 PEWTER



50 IVORY



01 CREAM



33 LUMINARY



05 WHITE



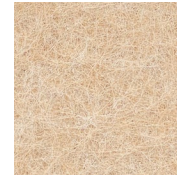
35 BARK



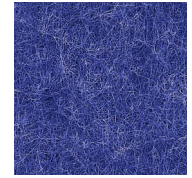
34 TONAL TAUPE



82 BARLEY



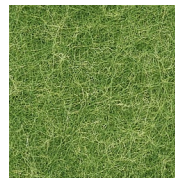
83 HOLLAND OATS



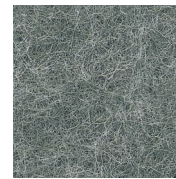
24 ROYAL BLUE



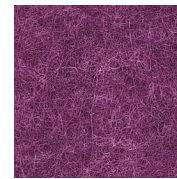
10 TOPO GREEN



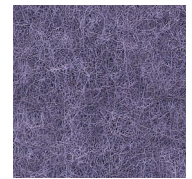
12 GRASSHOPPER



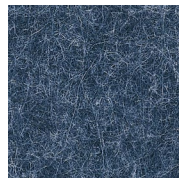
11 CELADON



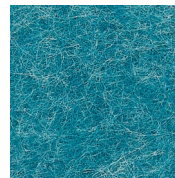
40 MAGENTA



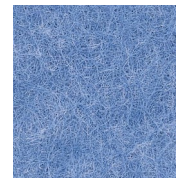
41 DRIED LAVENDER



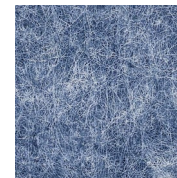
28 INDIGO



30 CYAN



31 AZURE



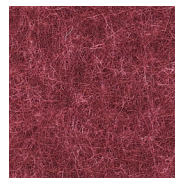
27 JEAN JACKET



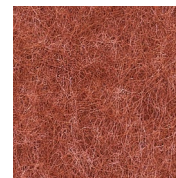
26 FADED DENIM



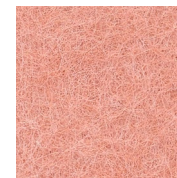
23 RED



15 MERLOT



18 ULTISOL



17 BLUSH



43 ORANGE CRUSH



63 SAFFLOWER



64 PLANTAIN

# TEXTURES

Invite nature into your space with our wood-inspired textures. Digital printing on felt ensures a unique and realistic grain with virtually no repeats.

**\* There is an additional product cost for Wood Textures.**

## CUSTOM

Endless customization options are available, including color and grain matching to your sample.

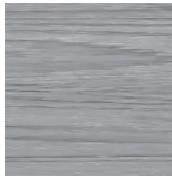
**\* Please note there is additional lead time for custom matching. Texture and customization will incur additional costs beyond our standard 9 mm options.**

Felt thickness is 9 mm +/- 0.5 mm.

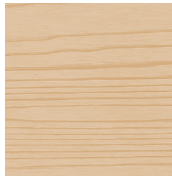
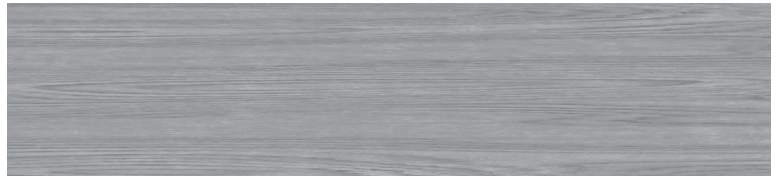
**Monitors and printers vary. Please request a material sample to verify felt colors.**



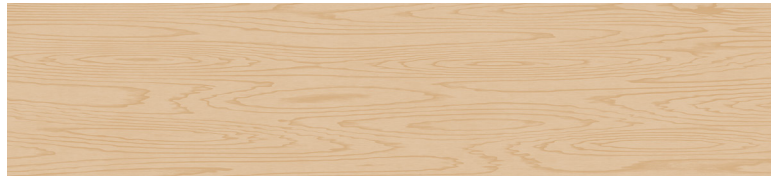
D01 WHITE ASH



D02 SILVER TEAK



D03 CLEAR MAPLE



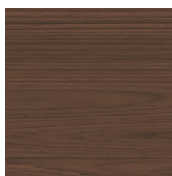
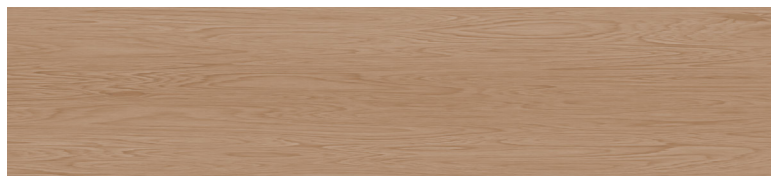
D04 WASHED ASH



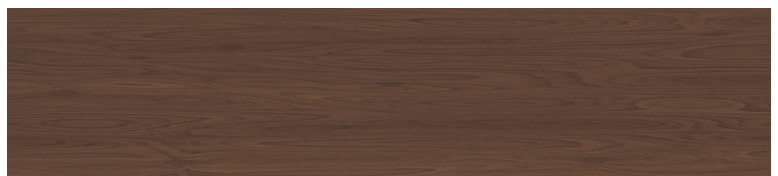
D05 MEDIUM OAK



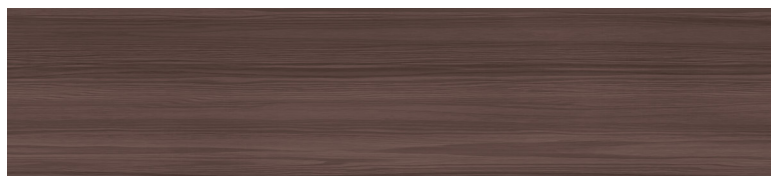
D06 PLANKED OAK



D07 DARK WALNUT



D08 BLACK PEAR



# TECH

## ACOUSTICS

ASTM C423-17: Type J Mounting

## FIRE RATING

ASTM E-84 – Class A

## VOC

ASTM D5116 Compliant

# DETAILS

## DURABILITY

Contract

## LEAD TIME

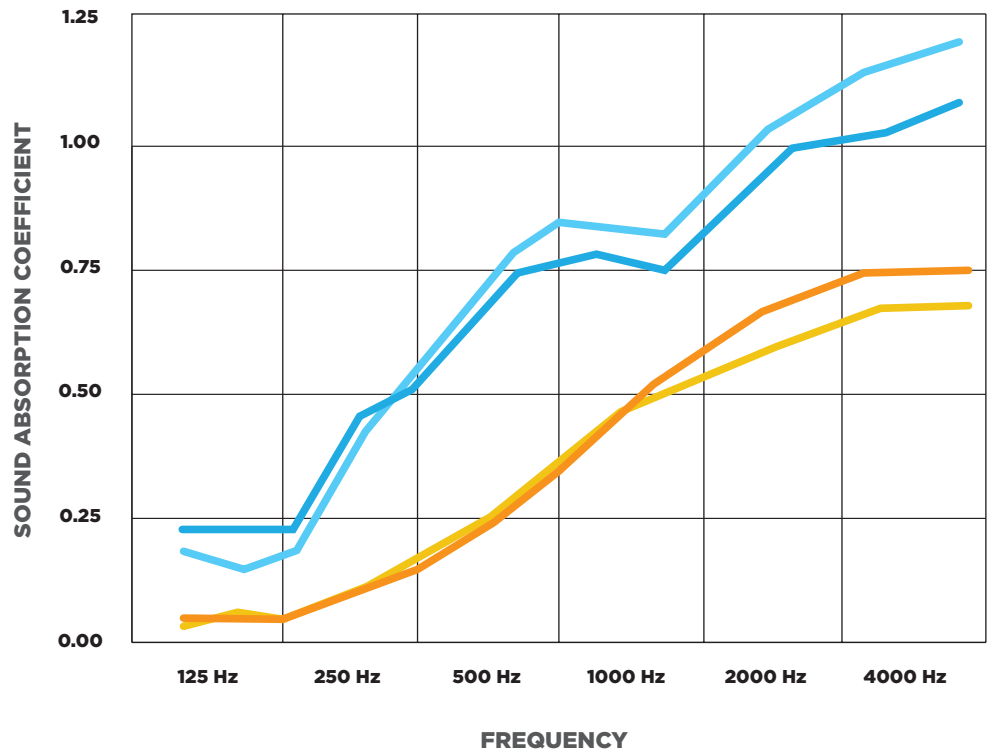
Check the Turf website for current lead times.

## WARRANTY

Three (3) years

## MAINTENANCE

Vacuum to remove any particulate matter and air-borne debris or dust. Compressed air can be used to dust the material in difficult to reach areas for large assemblies. Contact us for more information relative to spot cleaning.



- A20-403 NRC = 2.15  
TALL (5.5") / 8 IN. SPACING
- A20-404 NRC = 2.25  
TALL (5.5") / 10 IN. SPACING
- A20-407 NRC = 1.90  
SHORT (3") / 8 IN. SPACING
- A20-408 NRC = 2.00  
SHORT (3") / 10 IN. SPACING

ASTM C 423-17: Type J Mounting: The specimen is an array of evenly spaced sound absorbing baffles suspended from cables such that the closest face of the baffles is located approximately 1.37 m (53.75 in.) or 1.42 m (56.0 in.) from the horizontal test surface. This approximates the mounting method of a typical ceiling baffle installation. The baffles were evenly distributed in a single row, spaced 203 mm (8 in.) and 254 mm (10 in.) on center.

\*Acoustic testing is performed in multiple configurations. NRC values will vary depending on customization and specific installation details. Contact your Account Manager for additional test data and details.

