

Intelligent Supply Collaboration

In today's high-pressure automotive landscape, OEMs and their suppliers face shrinking build cycles, shifting demand, and mounting disruption. Effective supply collaboration is no longer a luxury—it's a competitive necessity. By digitalizing and automating sourcing, planning, and execution workflows, manufacturers and suppliers can achieve the agility, speed, and control needed to keep production on track and customer promises fulfilled.

Streamline procure-to-pay operations

Manufacturers rely on a vast network of suppliers for critical components, and any communication breakdown can cause costly production halts. With e2open, you can automate the purchasing process and ensure supply continuity.

Key benefits

- Seamlessly manage raw material and component procurement, including last-minute changes.
- Adapt quickly to market fluctuations with flexible order management workflows.
- Standardize supplier communication to ensure alignment across production needs.
- Automate tracking of releases, blanket orders, and scheduling agreements.
- Expand supplier networks while centralizing data exchange for enhanced transparency.
- Identify and resolve order and shipment discrepancies before they impact production.

20-30%

PRODUCTIVITY INCREASE BY
ELIMINATING MANUAL ERRORS

10-20%

IMPROVEMENT IN SUPPLIER
ON-TIME DELIVERIES

50-75%

REDUCTION IN EXCESS AND
OBSOLETE INVENTORY



Keep pace with shifting demand

The automotive industry faces constant fluctuation due to market shifts, geopolitical factors, and EV adoption trends. Now you can move beyond spreadsheet-based planning and collaborate across supply tiers to proactively secure critical materials and capacity.

Key benefits

- Gain a time-series view of material forecasts, commitments, and upside flexibility.
- Automate issue identification and resolution through collaborative workflows.
- Prevent shortages with dynamic alerts for demand-supply mismatches.
- Secure materials and capacity with real-time demand insights and supplier commitments.

25-35%

REDUCTION IN COMPONENT
EXPEDITING COSTS

10-20%

FEWER MISMATCHES BETWEEN FORECASTS
AND SUPPLIER COMMITMENTS

5-10%

IMPROVEMENT IN CUSTOMER
ORDER FILL RATES

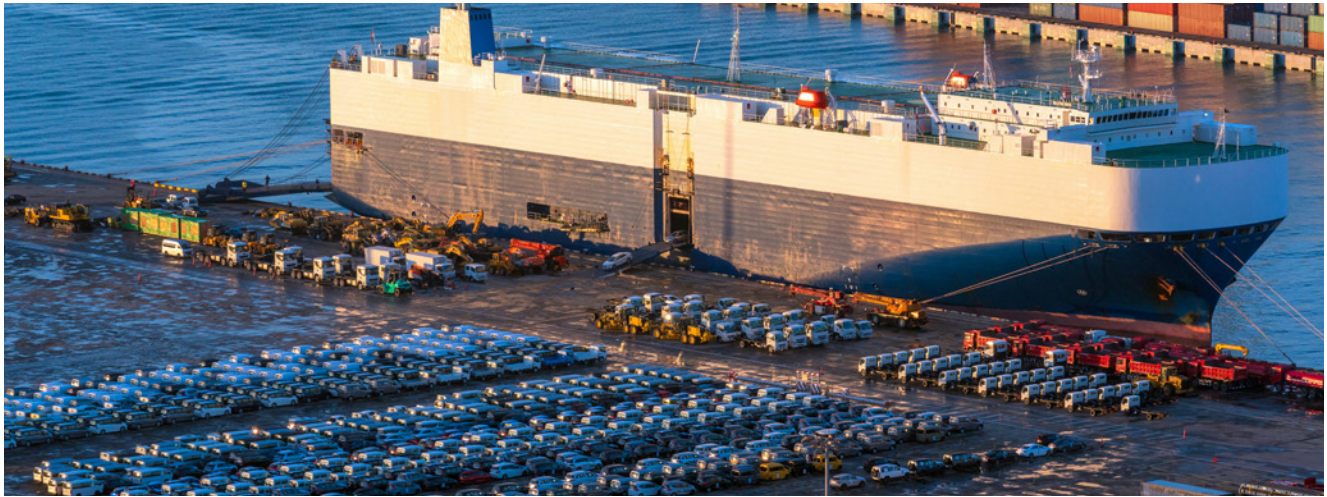
E2open + Catena-X: A new standard for automotive collaboration

E2open is the first and only pure-play supply chain provider to achieve Catena-X certification, enabling seamless, secure data sharing across the automotive value chain.

- **Interoperability:** Share data across OEMs, suppliers, and partners without system limitations.
- **Data Sovereignty:** Retain full control over your data while collaborating in real time.
- **Future-Ready:** Built to scale with electric, autonomous, and next-gen vehicle supply chains.

By connecting partners through a unified, secure, and trusted ecosystem, e2open empowers automotive companies to reduce friction, manage risk, and drive innovation from the factory floor to the dealership.





Steer clear of inventory disruptions and delays

Avoid high carrying costs, optimize stock levels, and eliminate waste by gaining visibility into inventory across all supply chain nodes including in-transit stock. Proactively manage shortages and excesses to ensure the right materials are available at the right time.

Key benefits

- Real-time tracking of inventory across plants, warehouses, and suppliers.
- Faster issue resolution with supplier-led inventory management.
- Scenario planning to simulate forecast changes and mitigate stock imbalances.
- Automated replenishment cycles for vendor-managed and consigned inventory.

20-30%

REDUCTION IN INVENTORY

30-50%

IMPROVEMENT IN INVENTORY TURNOVER

35%

DECREASE IN THE TIME REQUIRED
TO RESOLVE POTENTIAL SHORTAGES

Ensure compliance and reduce supply chain risk

With increasing scrutiny on sustainability, ethical sourcing, and traceability, automotive manufacturers must stay ahead of evolving regulations. e2open enables you to map and assess multi-tier supplier relationships, ensuring compliance with ESG requirements and trade regulations.

Key benefits

- Identify, screen, and certify suppliers for ethical and legal compliance.
- Gain multi-tier visibility to track raw material origins and prevent sourcing risks.
- Proactively manage supply disruptions and avoid penalties.
- Maintain a centralized repository for compliance documentation and certifications.

20%
COST REDUCTION THROUGH THE
IDENTIFICATION OF SUB-TIER SUPPLIERS

FASTER DISRUPTION IMPACT STATEMENTS
IN HOURS, NOT DAYS

50%
REDUCTION OF
DISRUPTION-RELATED COSTS

Built to move the Automotive industry

Supply chains are being redefined by speed, complexity, and constant change. E2open's supply collaboration solution empowers automotive OEMs and Tier 1 suppliers to drive agility, control costs, and keep production moving—no matter what's around the corner.

Ready to build a smarter, faster supply network?

Discover how e2open can help you take control of your supply chain from end to end.

[Discover more](#)

About e2open

E2open is the connected supply chain software platform that enables the world's largest companies to transform the way they make, move, and sell goods and services. With the broadest cloud-native global platform purpose-built for modern supply chains, e2open connects more than 500,000 manufacturing, logistics, channel, and distribution partners as one multi-enterprise network tracking over 18 billion transactions annually. Our SaaS platform anticipates disruptions and opportunities to help companies improve efficiency, reduce waste, and operate sustainably. Moving as one.™

Learn More: www.e2open.com.

©E2open LLC 2025 Confidential. All rights reserved.

E2open and the e2open logo are registered trademarks of E2open, LLC. Moving as one. is a trademark of E2open, LLC. All other trademarks, registered trademarks, or service marks are the property of their respective owners.