

# Work Smarter: Agentic AI Sets a New Standard for Supply Chain Mastery

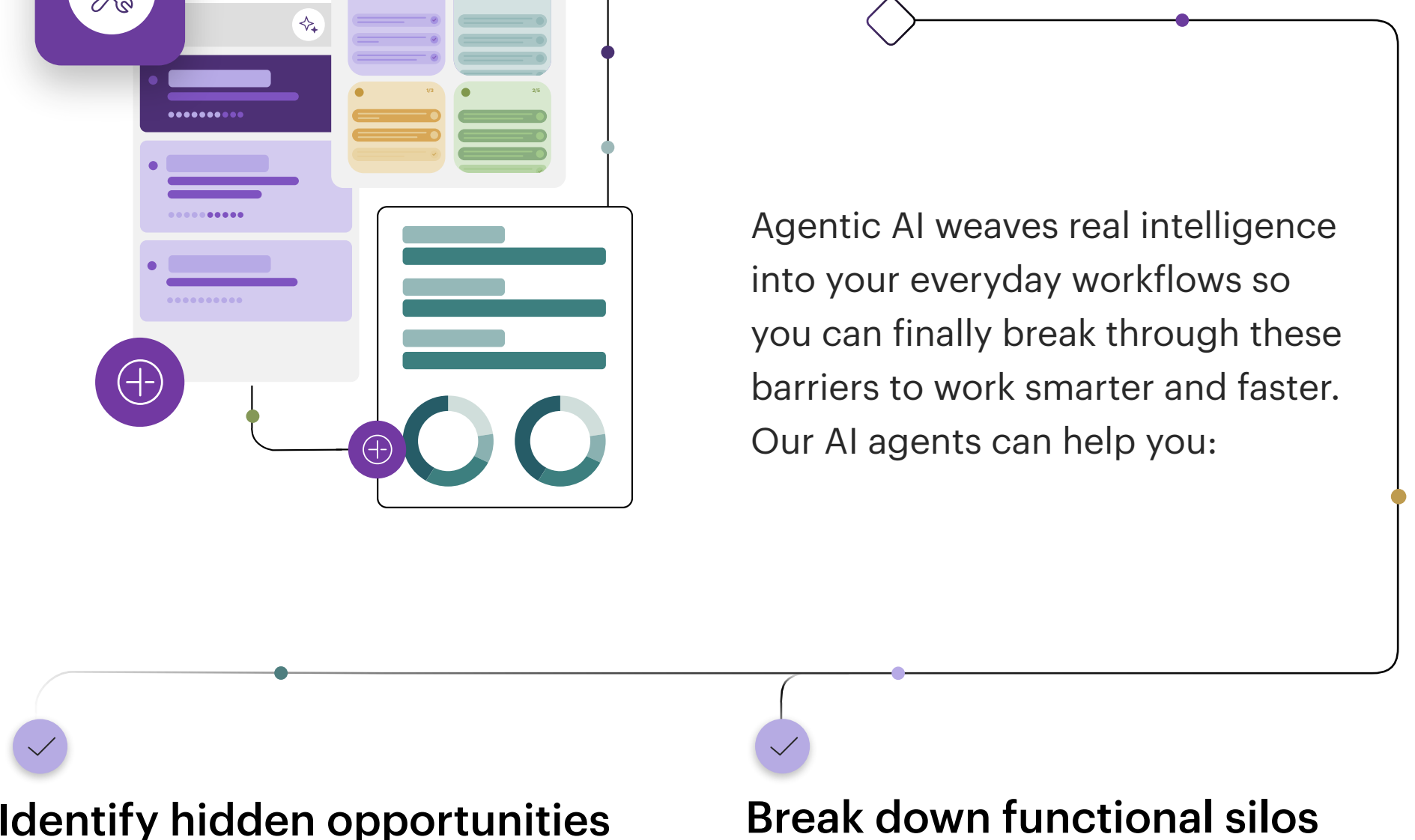
Turn complexity into better business outcomes with agentic AI from e2open



With e2open’s agentic AI, you aren’t just managing your supply chain, you’re leveling up to a superuser – overcoming barriers of organizational silos, rigid processes, and disconnected technology – to do things the way you always wished you could.

## Current obstacles to supply chain efficiency

Today’s supply chains have it tougher than ever before. The task of meeting consumer demands is not nearly as clear-cut, linear, or predictable as it was in the past.



### Identify hidden opportunities

By monitoring your entire value chain, our agentic AI makes it easier to find ways to cut costs, increase efficiencies, and capitalize on growth opportunities.

### Make cross-functional moves

Thanks to the scope of agentic AI and our unified, cross-functional applications, you can see and act on the big picture, not just a small slice.

### Tackle your wishlist

Agentic AI gives you the power to achieve things you’ve only dreamed of – from true scenario planning to proactive risk management.

### Break down functional silos

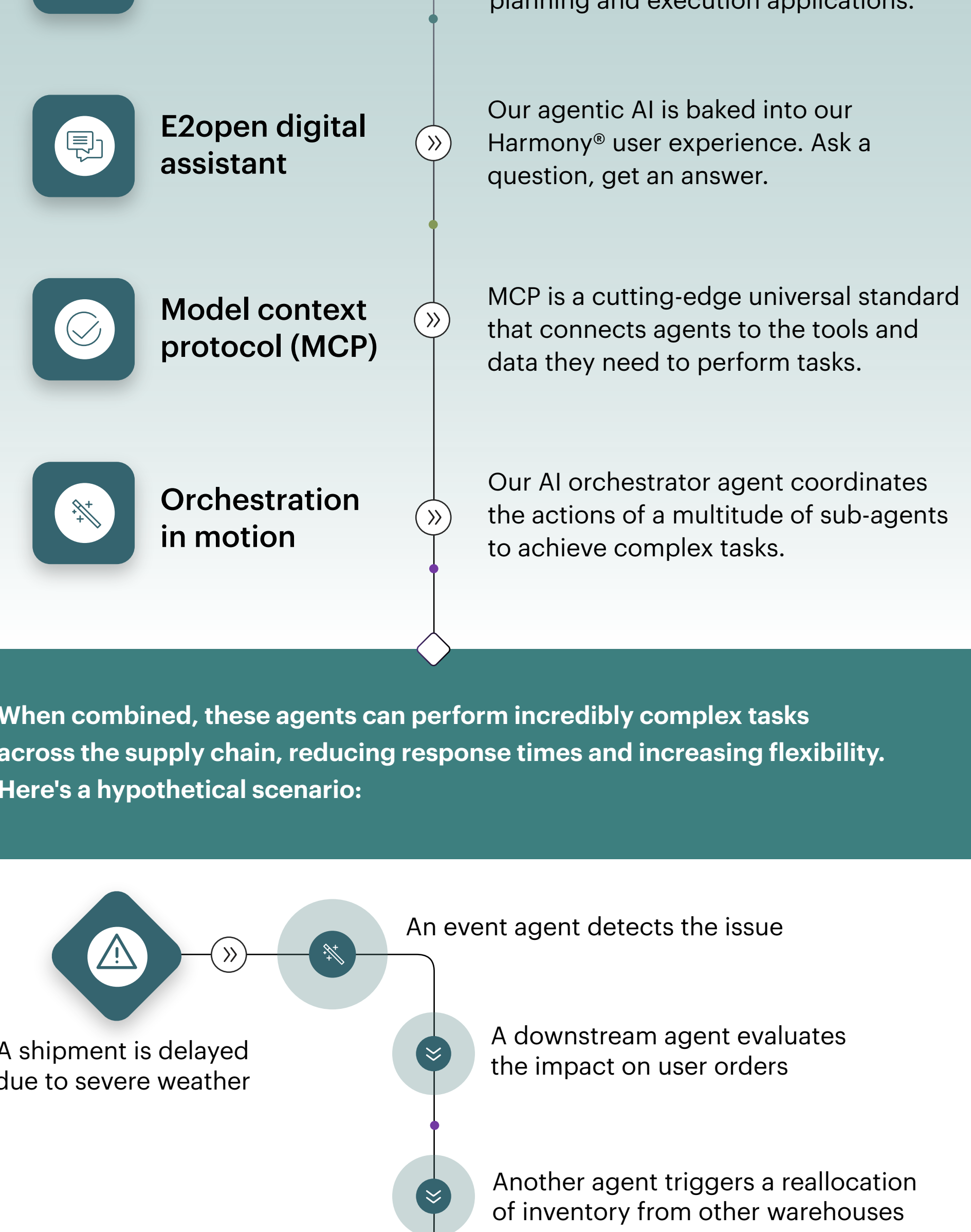
Our AI agents connect all teams, partners, and actions through one platform to ensure everyone is on the same page and working toward shared goals.

### Leave behind busywork

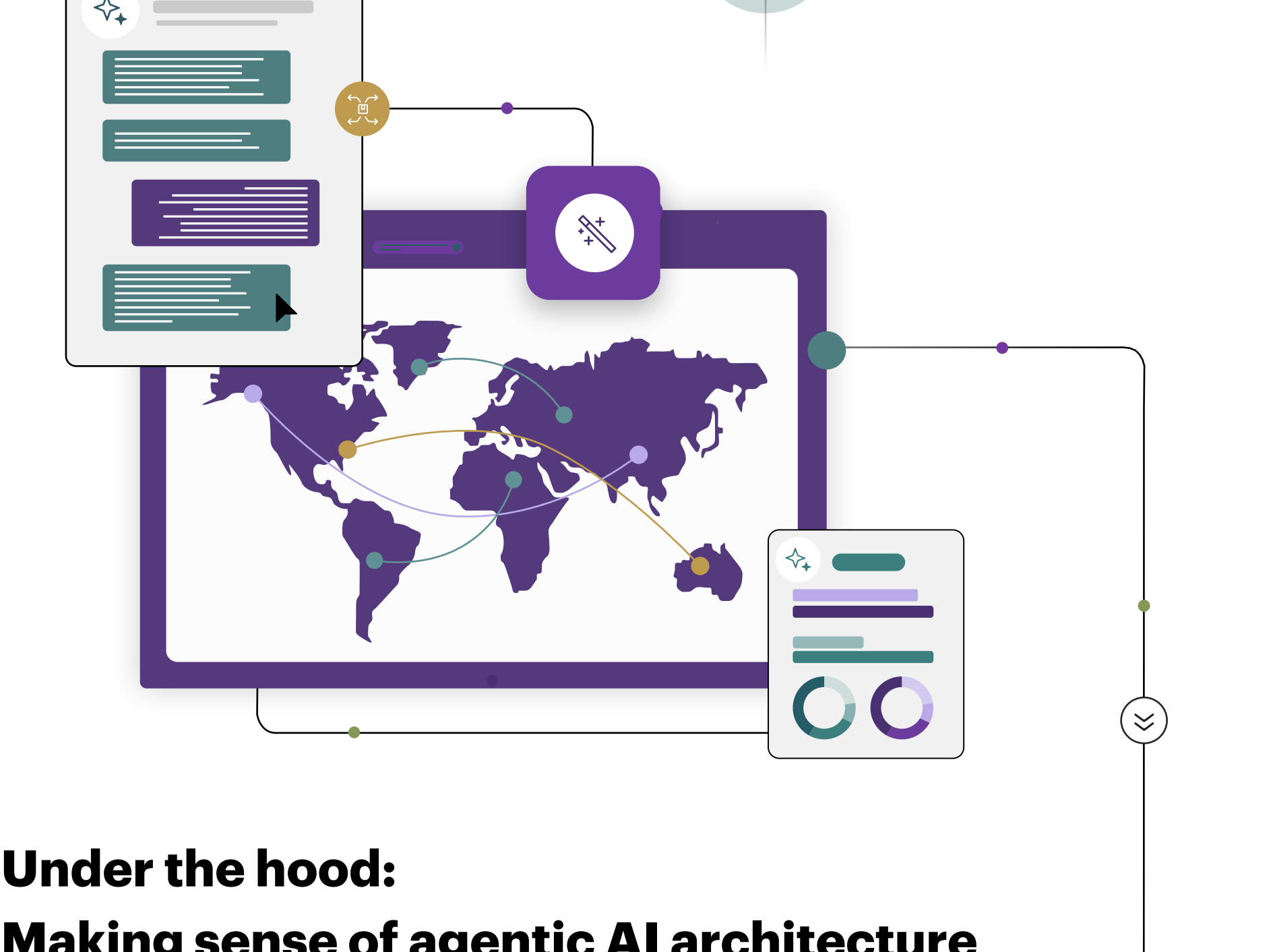
Our AI agents handle the time- and labor-intensive tasks, so you’re free to focus on strategic work instead of shuffling from one spreadsheet to another.

## Reimagine the way supply chain decisions are made

Our agentic AI is like having extra supply chain coaches on hand who are experienced and adept at identifying problems, developing solutions, and executing actions around the clock.

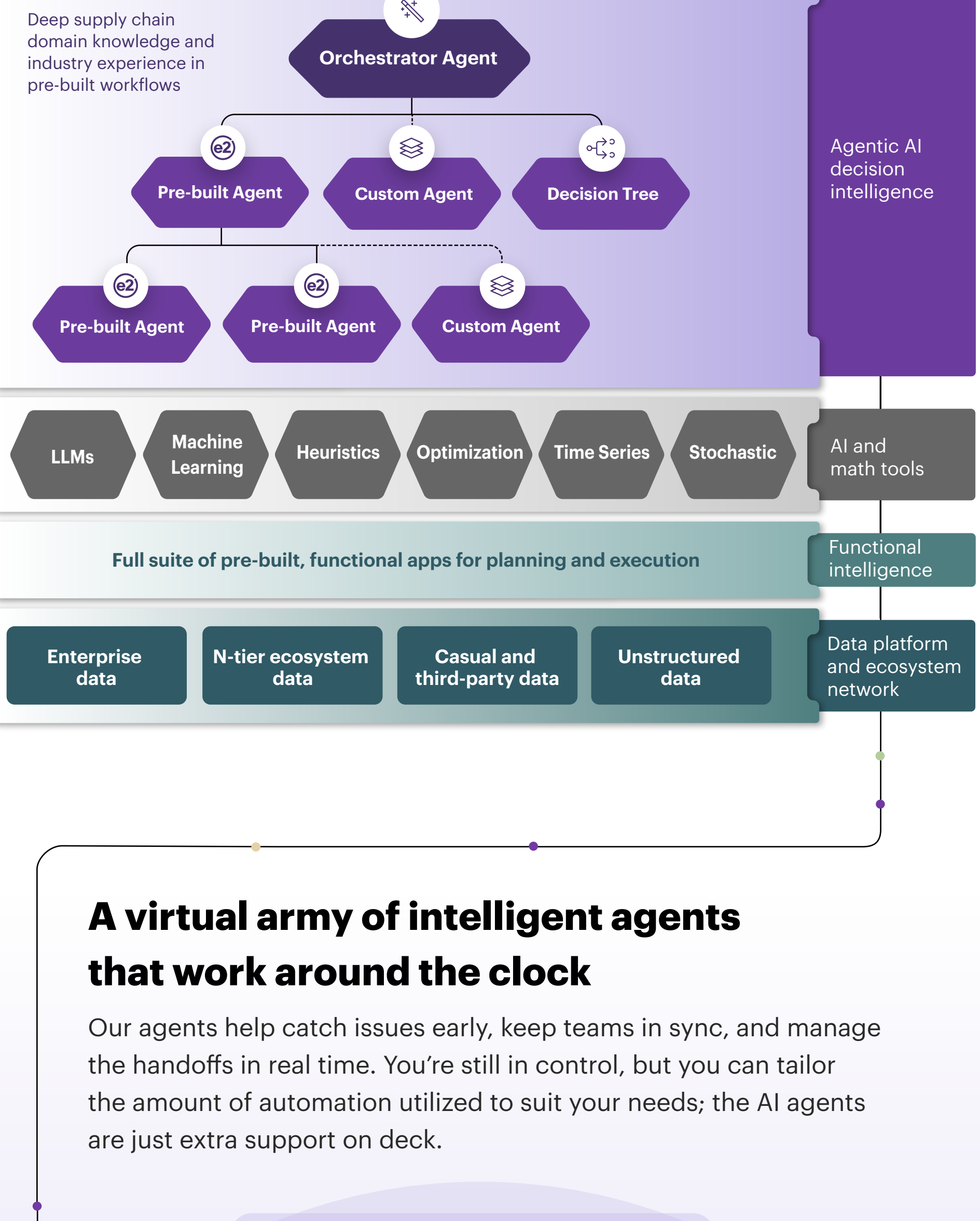


When combined, these agents can perform incredibly complex tasks across the supply chain, reducing response times and increasing flexibility. Here’s a hypothetical scenario:



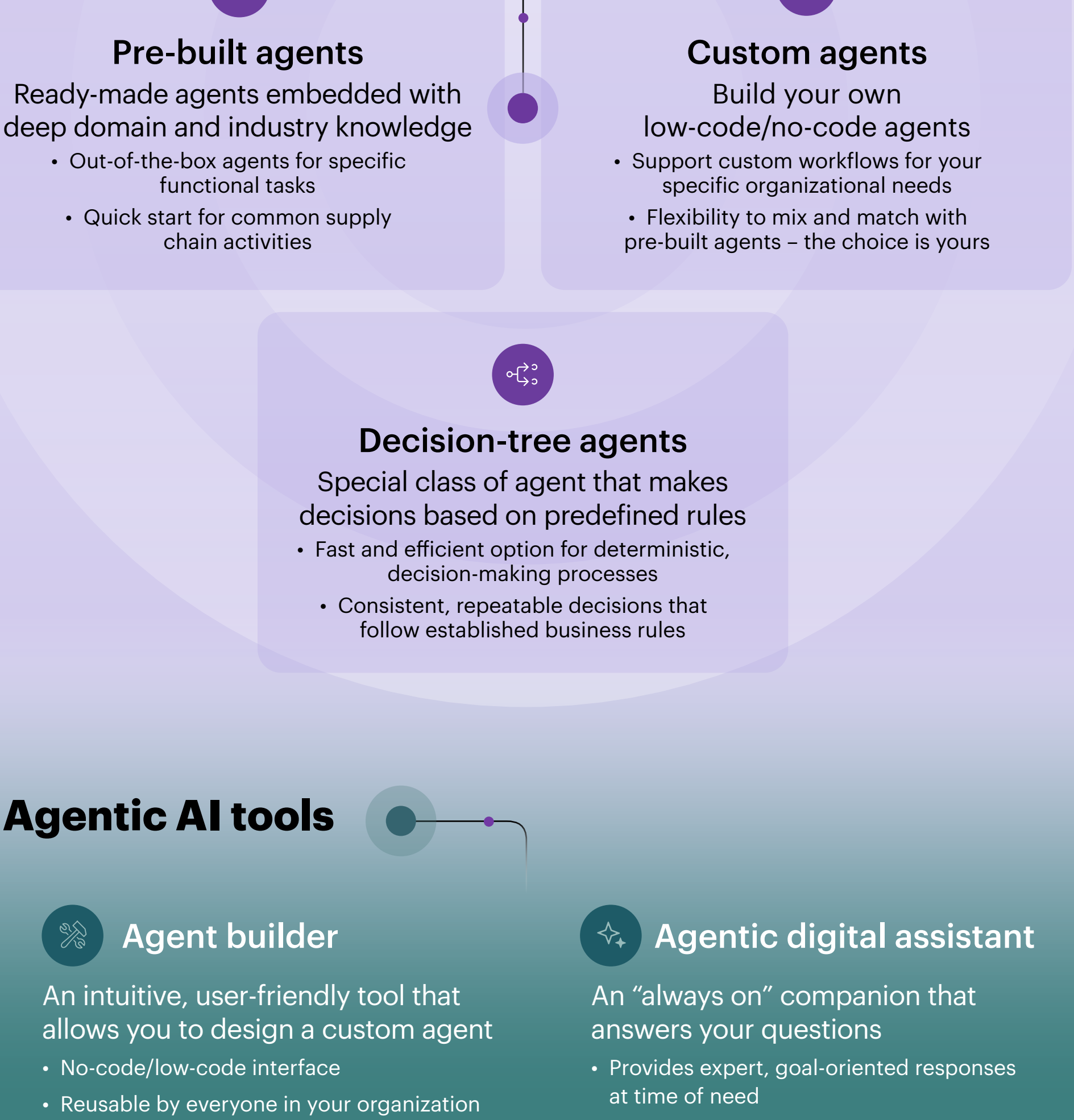
## Under the hood: Making sense of agentic AI architecture

E2open is building a modular, orchestrated network of intelligent AI agents, each designed to perform a specific task and work together in tandem when needed.

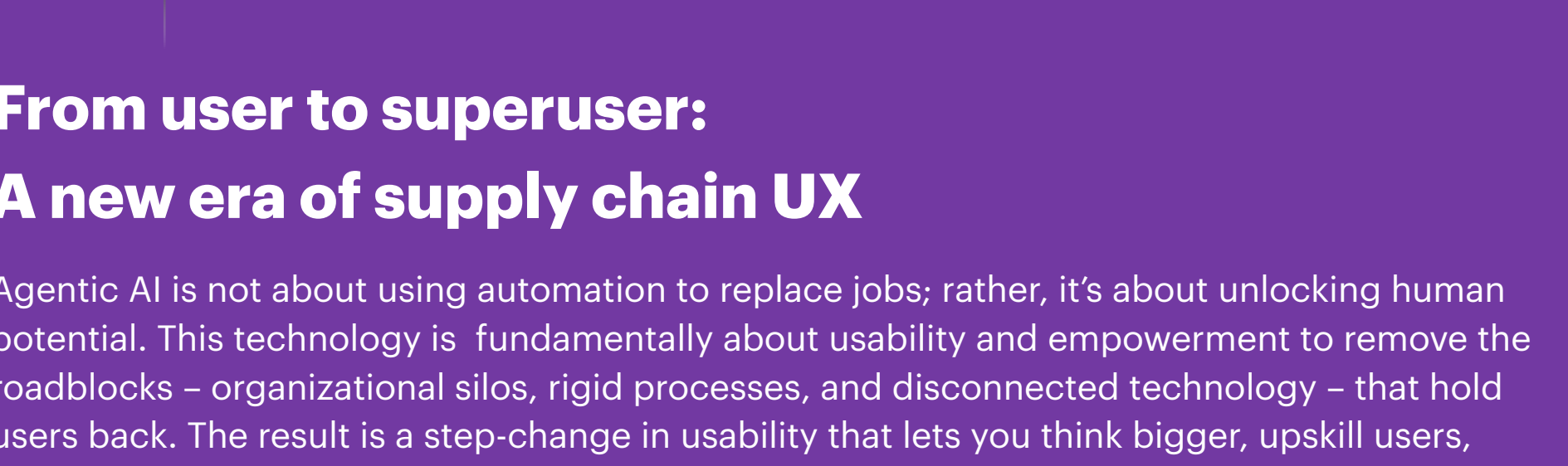


## A virtual army of intelligent agents that work around the clock

Our agents help catch issues early, keep teams in sync, and manage the handoffs in real time. You’re still in control, but you can tailor the amount of automation utilized to suit your needs; the AI agents are just extra support on deck.

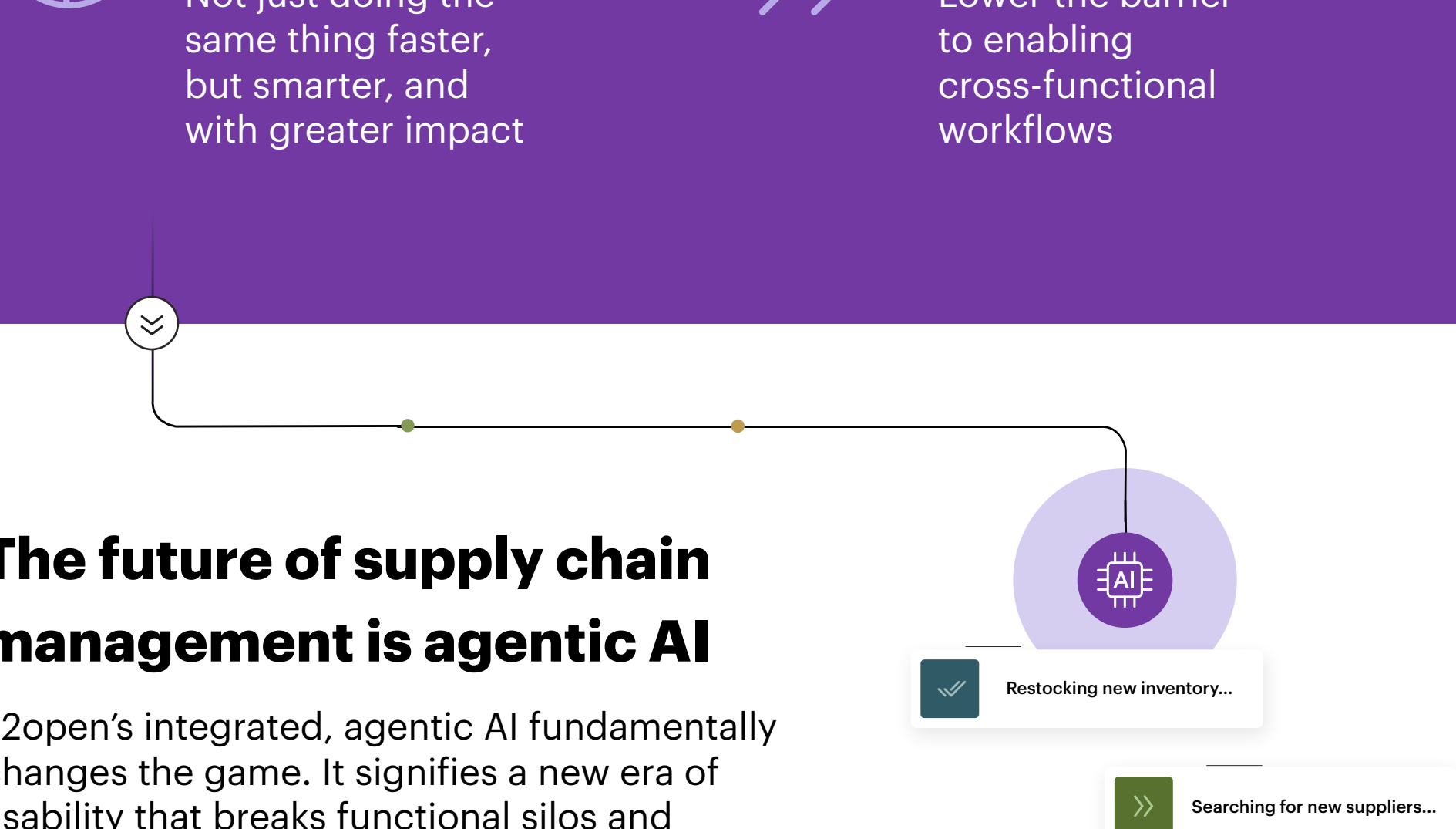


## Agentic AI tools



## From user to superuser: A new era of supply chain UX

Agentic AI is not about using automation to replace jobs; rather, it’s about unlocking human potential. This technology is fundamentally about usability and empowerment to remove the roadblocks – organizational silos, rigid processes, and disconnected technology – that hold users back. The result is a step-change in usability that lets you think bigger, upskill users, close knowledge gaps, and make every user a superuser.



## The future of supply chain management is agentic AI

E2open’s integrated, agentic AI fundamentally changes the game. It signifies a new era of usability that breaks functional silos and unlocks the cross-functional workflows you’ve always wished you could have.

See how agentic AI can level up your supply chain. Reach out to learn more.

