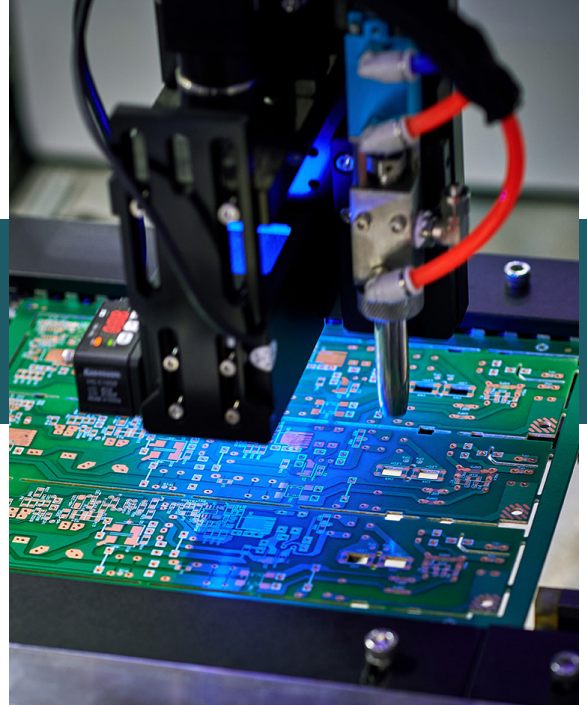


Winning the Parts Shortage Battle

Renowned for barcodes, mobile computing, and RFID expertise, this global company streamlines operational complexities for its customers. From inventory tracking to efficient data management, the company enhance productivity seamlessly in diverse settings such as retail, manufacturing, healthcare, and logistics.



The situation

Like its peers, this global brand battled the complexities of supply risk to alleviate the challenges impacting all levels of production and fulfillment.

Relying significantly on suppliers for materials, parts, and components to furnish their final products, the company faced challenges stemming from parts shortages that directly affected production readiness.

The company's main objective was to guarantee the availability and readiness of the required supply when production commenced to avoid lost revenue and increasing costs.

The challenge

The main challenge was its ability to predict parts shortages and immediately set a resolution plan in motion. This intensified when shortages occurred close to the production deadline.

Parts shortages arose from inaccurate demand forecasts and a myriad of supply chain disruptions that affected supply availability. This made it critical for the business to proactively identify possible parts shortage scenarios to avert product delays and unplanned stoppages.

Unplanned production stoppages proved to be a significant financial burden for the company, resulting in

losses averaging \$22,000 for each minute of downtime. To mitigate the impact, the company resorted to expediting supply orders, incurring additional costs to keep production running and prevent further erosion of profits. The company also relied on manual processes to coordinate alternative sources and ensure a continuous and reliable supply stream.

The solution

To overcome its shortage challenges, the company partnered with e2open to enhance its awareness and empower its resolution team with advanced collaboration capabilities.



Leveraging the e2open Supply Collaboration platform for supply assurance, the company achieved a heightened understanding of its supply

risk while attaining multi-tier supply chain visibility. This holistic view enabled the company to anticipate and address supply shortage scenarios before they happened.

Additionally, e2open Supply Collaboration played a pivotal role in streamlining supply shortage management. The new supply shortage ticketing process facilitated the tracking and resolution of known shortages through collaborative efforts, effectively reducing the timeline for resolution.



Global Company

Challenges

- Production stops due to supply shortages
- Lower margins from excess safety stock and expediting costs
- Highly manual supply shortage resolution process

Solution

- Proactive supply shortage management
- Multi-tier supply visibility for shortage identification
- Streamlined partner engagement to resolve shortages

Applications

- E2open E2net
- E2open Supply Collaboration

The outcome

Efficient parts shortage management enabled the business to take command of supply chain challenges utilizing advanced warning systems and promoting collaborative resolutions.

The advantages go beyond mere operational efficiency. Implementing a collaborative shortage ticketing process involves all stakeholders in the supply chain, facilitating quicker resolutions and minimizing production downtime.

By efficiently managing known shortages, businesses can gain the visibility necessary to predict and address inventory gaps before they arise. This proactive strategy eliminates the requirement for excess safety stock, alleviates the risk of stockouts, and curtails expediting costs. The result is optimized inventory with precision, ensuring the right items are available at the right time. The outcome is a well-coordinated and efficient supply chain that enhances supply readiness, resilience, and competitiveness.

Applications

- E2open e2net
- E2open Supply Collaboration



About e2open

E2open is the connected supply chain software platform that enables the world's largest companies to transform the way they make, move, and sell goods and services. With the broadest cloud-native global platform purpose-built for modern supply chains, e2open connects more than 480,000 manufacturing, logistics, channel, and distribution partners as one multi-enterprise network tracking over 15 billion transactions annually. Our SaaS platform anticipates disruptions and opportunities to help companies improve efficiency, reduce waste, and operate sustainably. Moving as one.™ Learn More: www.e2open.com

E2open and the e2open logo are registered trademarks of E2open, LLC. Moving as one. is a trademark of E2open, LLC. All other trademarks, registered trademarks, or service marks are the property of their respective owners.

BCPSB241

www.e2open.com



REDUCED

**Unplanned
Downtime
Resulting from
Parts Shortages
\$22k/min***



REDUCED

**Inventory
by 50%**



LOWERED

**Expediting
Costs by 30%**



INCREASED

**Inventory
Turns by 2x**



ALLEVIATED

**Part Shortages
without
Increasing Safety
Stock Levels**

*industry average for cost of unplanned downtime

e2open