

DATA SHEET

E2open Connected Planning

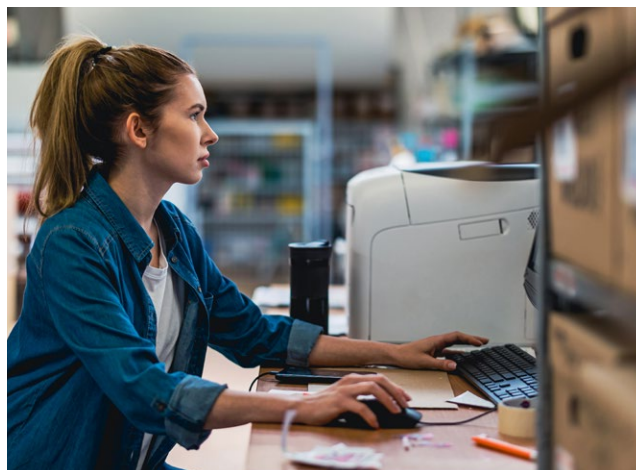
Plan with confidence. Act with clarity.

Volatility isn't just a headline. It's the reality for every supply chain leader. Demand can shift overnight, and disruptions ripple through supplier networks faster than ever. Most planning tools and processes still assume a clean, predictable world and optimize within the enterprise. But that's not the world you operate in.

E2open Connected Planning is built for the real world. It's designed to help you see your value chain from the outside-in, where most disruptions arise. It helps you manage complexity and uncertainty without slowing your team down. Instead of forcing you to fit your business into rigid models, it adapts to your needs. The platform connects demand, inventory, supply, and S&OP in one unified model. It brings together data, people, and decisions across your company and your partners, so you can respond faster and plan smarter.

With e2open, you get a solution that supports every planning horizon, from long-term strategy to day-to-day execution. It's ready to use out of the box, so your team can start seeing results right away. You don't have to wait for months of setup or endless customization.

What makes e2open different is how it breaks down silos. Instead of juggling disconnected spreadsheets and systems, you get a clear view of your entire supply chain. This helps your team make better decisions, move quickly, and stay ahead of change. You spend less time reacting to problems and more time driving your business forward.





Key features

E2open Connected Planning goes beyond individual modules, it's an integrated model designed to mirror the way your business truly operates.

- **AI-powered, probabilistic forecasting and sensing** – Advanced artificial intelligence is built in, not bolted on, enabling smarter forecasting, autonomous planning, and actionable insights that help companies respond to market shifts and disruptions with speed and precision.
- **Unified model** – All planning resources are connected through a single data model, breaking down silos and providing a complete, accurate view across demand, supply, and production.
- **Dynamic scenario management** – Planners can simulate what-if scenarios, promote feasible plans, and adapt instantly to changing conditions, eliminating firefighting and reducing risk.
- **Detailed production scheduling** – Real-time scheduling helps manufacturers optimize machine sequencing, labor, and capacity, minimizing downtime and boosting throughput—all within the same platform.
- **Multi-enterprise collaboration** – Connected Planning aligns decisions across internal teams and external partners, including suppliers, manufacturers, and distributors, ensuring everyone works from the same playbook.
- **Agentic digital assistant** – An intuitive, agentic digital assistant supports every planner with pre-defined workflows, connected dashboards, and self-service capabilities, upskilling teams and driving productivity.

Key components

- **Demand Sensing** – Bridge the gap between forecasted and actual demand to avoid stockouts and fulfill orders accurately without excess inventory.
- **Demand Planning** – Anticipate, understand, and shape customer demand with advanced machine learning algorithms and automation powered by information from across all sales channels.
- **Supply Sensing** – Leverage real-time supply signals to predict the probability of shortages and take proactive steps to mitigate risk across supply, sales, and service levels.
- **Supply Planning** – Achieve fast, feasible, and profitable supply responses with supply plans that reflect constraints across multiple tiers of suppliers while ensuring high utilization.
- **Sales & Operations Planning** – Create consistently profitable, execution-ready plans that balance demand, supply, and financial goals to facilitate consensus across internal and external stakeholders.
- **Multi-Echelon Inventory Optimization** – Optimize materials and finished goods at all stocking echelons in the value chain, from internal operations to supplier and channel ecosystems.
- **Allocation and Order Promising** – Commit with confidence and maximize sales and profit opportunities with feasible allocation plans based on actual materials availability and manufacturing capacity.
- **Distribution Planning** – Profitably fulfill customer demand with efficient replenishment plans for each location across the entire network to ensure continuous availability and minimize costs.

Key benefits

With e2open Connected Planning, you don't have to wait for the next cycle to make a decision. You can act in real time, with full visibility and confidence. That means:

- **End-to-end visibility**
See across your entire value chain in one place
- **Stronger alignment**
Connect planning with execution, finance, and partners
- **Faster, smarter decisions**
Act in real time with confidence
- **Improved service and margins**
Reduce stockouts, excess, and firefighting
- **Greater resilience**
Sense risks early and adapt quickly



Designed for planners. Built for business.

Connected Planning revolutionizes the role of the planner. It turns planners into super-planners and transforms supply chain planning into a strategic advantage, ensuring your business stays ahead of disruptions, reduces costs, and maximizes efficiency. Connected Planning helps planners evolve from constant crisis responders to strategic supply chain orchestrators.

For the business, Connected Planning integrates downstream and upstream visibility, facilitating proactive, data-driven decision-making for enhanced agility and resilience. You are better equipped to anticipate and mitigate risks, optimize inventory levels, and strengthen collaboration with partners.

The bottom line

E2open Connected Planning helps you move from reactive to proactive, from fragmented to unified, from guesswork to precision.

It's about planning with confidence and acting with clarity.

About e2open

E2open is the connected supply chain software platform that enables the world's largest companies to transform the way they make, move, and sell goods and services. With the broadest cloud-native global platform purpose-built for modern supply chains, e2open connects more than 500,000 manufacturing, logistics, channel, and distribution partners as one multi-enterprise network tracking over 18 billion transactions annually. Our SaaS platform anticipates disruptions and opportunities to help companies improve efficiency, reduce waste, and operate sustainably. Moving as one.™ Learn More: www.e2open.com.

E2open and the e2open logo are registered trademarks of e2open, LLC. Moving as one. is a trademark of e2open, LLC. All other trademarks, registered trademarks, or service marks are the property of their respective owners.
DS251