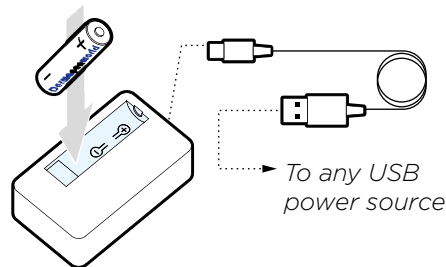


## SET UP YOUR PRODUCT

### 1. CHARGE YOUR DERMAPEN HOME BATTERY

Your Dermapen HOME product is **powered by a single, rechargeable battery**. Two rechargeable batteries have been provided in your kit.

**1a. Charge the Battery.** Place the Battery into the provided Charger. Plug the USB A cable end into a power source.



### 1b. Install the Battery.

Insert the fully charged battery into your pen.

### 2. CREATE YOUR ACCOUNT & REGISTER YOUR PEN

**You will not be able to use your product if you do not complete this step.** Registration also ensures warranty of the product.

### 2a. Download the DermapenWorld App.



### 2b. Create your Account.

After downloading the DermapenWorld App. Select 'Sign up - New User' to create your Account.

### 2c. Register your Pen.

Follow the on-screen prompts to Register your Pen.

## SAFETY INFORMATION



Do not use Dermapen HOME™ if you are experiencing any of the following active conditions:

- Under the **age** of 22, or over the age of 65.
- Hemophilia or other **blood clotting disorders**.
- Taking high doses of **anti-coagulants** or blood-thinning substances; e.g., aspirin, warfarin, heparin, acetylsalicylic acid.
- Systemic **infections** or acute local skin infections (such as Hepatitis disorders type A, B, C, D, E, F or Human Immuno deficiency virus (HIV) infection).
- **Active acne** in the treatment area.
- Taking **acne medication** with the ingredient isotretinoin (such as Accutane®).
- Undergoing **chemotherapy, radiotherapy**, or high-dosage corticosteroid therapy.
- **Eczema**, skin rashes or have open wounds/broken skin in the treatment area.
- **Facial surgical scars** less than 12 months old.
- **Botox** or other neuromodulator injections in the face within the last 7 days.
- **Skin cancers**, keloids or predisposition to keloids, solar keratosis, warts, or birthmarks, in the treatment area.

Contact your health care provider if you experience unexpected symptoms. **This product is for personal use only and should not be shared.**

**Access the User Manual here:**

<https://www.dermapenworld.com/literatureretrieve>

**Technical Support**

[dermapenworld.com/contact-us](https://www.dermapenworld.com/contact-us)

**Dermapen**HOME™

## Quick Start Guide MICRONEEDLING AT HOME

© Copyright Equipmed USA

Digital LCD Screen

Speed Buttons

+ Increase Speed  
- Decrease Speed

Battery Cover

Level Buttons

+ Increase Level  
- Decrease Level

Status Light

Appears orange if there is an issue

Speed Level (1-4)

Bluetooth Status

Level Indicator

Warning icons will appear and blink for:

Low Battery  
Sync Needed  
Needle Error

Needle

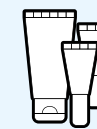
Safety Cap

Power Button / Active Mode

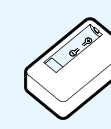
## DERMAPEN HOME KIT ITEMS



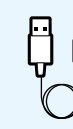
B



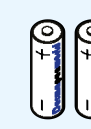
C



D



E



F

- A. 1 Dermapen HOME Pen
- B. 1 Box of 5 Needle Cartridges (individually packaged)  
*Additional Needles available for purchase*
- C. 3 Dp Dermaceuticals™  
TRI-PHASE CLEANSER™, HYLA ACTIVE™ & VITAMIN RICH REPAIR™
- D. 1 Battery Charger
- E. 1 USB Battery Charger Cable
- F. 2 Rechargeable Batteries

## USE YOUR PRODUCT

### 3. CLEAN YOUR PEN

Your Pen **must be cleaned before each use** to avoid contaminants causing infection. Clean your Pen by wiping it down with disinfectant wipes.

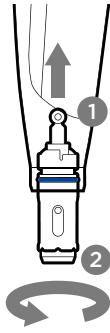
**! Do not submerge your Pen in liquid.**

### 4. ATTACH A NEW, STERILE NEEDLE CARTRIDGE

You must use a **new, sterile needle** for each treatment to avoid risk of infection.

**! Check the package for expiry and damage to ensure it is sterile before using it.**

- (1) Attach the Needle to your Pen by placing it in the end of the Pen as shown.  
(2) Twist clockwise until you cannot twist anymore. Leave the Safety Cap on for now.



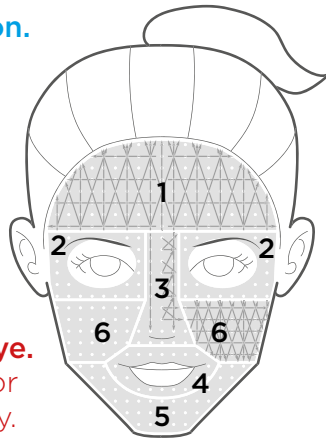
### 5. PREPARE TREATMENT REGION

#### 5a. Select your treatment region.

There are six regions on the face where you can perform microneedling treatment:

- 1. Forehead
- 2. Eye Area
- 3. Nose
- 4. Lip Area
- 5. Chin
- 6. Cheeks

**! Avoid treating directly on the lips and close to the eye.**  
Treatment is not suitable for any other areas of the body.



#### 5b. Wash your hands and cleanse treatment region.

Wash your hands thoroughly.

Use an **anti-bacterial cleanser** to **wash your face** and remove all makeup and impurities from your selected treatment region(s). Pat skin dry.

### 6. ADJUST SETTINGS FOR TREATMENT REGION

#### Turn on your Pen to adjust your speed and level settings.

Change the level setting of your needle according to the treatment region you have selected.

The level ranges from 1 - 4.

These are indicated by the number displayed on your Pen screen.

Treatment Regions	Level
Forehead	1-4
Eye Area	1-4
Nose	2
Lip Area	1-4
Chin/Cheek	4
Cheek Bone	2-4
Any Sort of Scar	4

**All speed settings are suitable for all treatment regions.** Change the speed setting to suit your level of comfort. The speed level is indicated by ranges between levels 1-4. It is displayed as a ring on your Pen screen.

### 7. PERFORM TREATMENT

**You can use the same needle across multiple treatment regions for each treatment.** Each region can be treated **once a week, for up to 10 minutes.**

#### 7a. Apply a thin layer of HYLACTIVE cream to the treatment area.

#### 7b. Remove Safety Cap.

Remove the safety cap on the end of your needle. **Dispose of your safety cap in general household waste.**

#### 7c. Set your Pen to “active mode”.

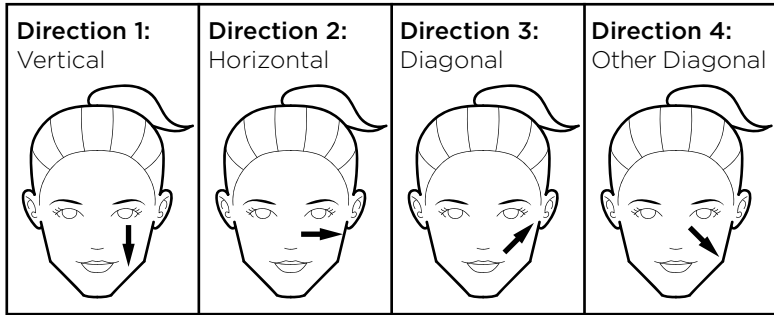
Your Pen needs to be set to active mode to perform your microneedling treatment. First, turn your Pen ON. Then, briefly press the power button again to activate the Pen. It will start to vibrate.

#### 7d. Apply active pen to treatment region.

Scan here to access  
**DEMONSTRATION VIDEO**



Applying constant, light pressure with your Pen, “draw” a series of **straight, parallel lines** across your treatment region(s), in the following **4 directions**:



**Lift your pen** at the end of each individual line, before drawing a new line, to avoid unnecessary reinsertions. Repeat the entire process above 3-5 times, per region.

### 8. FINISH TREATMENT

Turn pen off, remove the Needle and **dispose immediately into general household waste.**

**! Do not use this Needle again.**

**Clean your Pen**, remove battery and charge. Store your Pen and any unused Needles in a clean, dry location.

**! Keep out of reach of children.**

#### 8a. After treatment care.

Dry your skin and apply VITAMIN RICH REPAIR cream.