



*Le jardin chinois Collection*

**Brunschwig & Fils**

## *Le Jardin Chinois Collection*

Le Jardin Chinois Collection celebrates the fantasy and timelessness of chinoiserie. The collection is a reflection of the West's artistic fascination with the lifestyles, imagery, crafts and colors of this faraway land.

European trade with China brought about a passion for chinoiserie, a style that captured fantasies of Chinese life ~ ephemeral pagodas, long-tailed birds, men in coolie hats, flower laden vines. During the 18th century, French artist Jean Baptiste Pillement combined Chinese themes in a particular and stylish manner which proved to be very popular. His creations still inspire and are apparent in the new collection.

The enduring style of each Brunschwig & Fils fabric collection is informed by the vast collection of documents that make up our archive. For Le Jardin Chinois, the Brunschwig & Fils Design Studio found inspiration and historical references for many of the chinoiserie and complementary patterns that bring life to this new collection.





*River Song Print and River Song Embroidery document, circa 1820*

River Song Print (4 Colorways)

River Song Embroidery (3 Colorways)

Vignettes of varied Chinese figures, dancing or playing musical instruments and set within fantastic frames of foliage and flowers, clearly demonstrate a continuing debt to the mid-18th century engravings by Pillement. His fanciful renderings sparked so much of the era's fascination with chinoiserie.

River Song Print, Cotton (8012107)



Yellow 40



Aqua/Green 53

River Song Print, Linen (8012108)



Cream 1



Linen 16

River Song Embroidery, Linen (8012121)



Aqua/Taupe 511

River Song Embroidery, Silk (8012122)



Pink/Blue 75

## *Le Lac Print and Le Lac Border Print*

### Le Lac Print (3 Colorways)

### Le Lac Border Print (3 Colorways)

Frequently used together, these designs were developed from two entirely different documents owned privately in France. In the larger of the two, based on a brocaded silk by Philippe de la Salle, the chinoiserie motifs set it apart from his other designs and from the more typical French designs of the period. The border print, now a coordinate to the larger design, was adapted from a slightly earlier brocaded silk, and both are now available in a range of new colorings.

Le Lac Print, Cotton (8012135)



Blue/White 51

Le Lac Border Print, Cotton (8012110)



Blue/White 51

Le Lac Border Print, Linen (8012137)



Red/Blue 195

Le Lac Border Print, Linen (8012137)



Aqua/Green 513





Le Lac Print, Linen (8012136), colors Aqua/Green 513 and Red/Blue 195; Bedford Chair BR-2108





*Peony Imperiale document, circa 1875-1900*

### Peony Imperiale (8 Colorways)

A 19th century French brocatelle document of golden yellow silk in the Brunswick archive has been adapted into a more robust, textured weave suitable for wider uses in a modern setting. The Chinese-inspired design of tree peonies and roses on a serpentine branch now blooms across a viscose and linen blend in a generous range of eight colorways.

#### Peony Imperiale (8012118)



Cream 1



Linen 16



Buttercup 4



Red 19



Aqua 513



Turquoise 13



Blue 5



Apple 3





Lyn Stripe (8012120), colors Green 3, Blue 5, Tan/Dove 416, Aqua/Green 513, Rose/Jade 73, Bittersweet 129  
Lyn Plaid (8012119), colors Rose/Jade 73, Green 3, Blue 5, Bittersweet 129, Tan/Dove 416, Aqua/Green 513



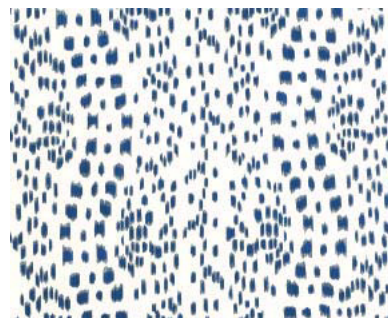


## *Les Touches Print mid 20th century*

### Les Touches Print (6 Colorways)

Les Touches is considered a Brunschwig classic. This stylized animal pattern was developed from a post WWII portfolio of black and white photographs. Since its introduction in 1965, the design has been widened to modern fabric widths and re-colored three times. It has been used to dramatic effect by such notables in the design field as Van Day Truex, head of Parsons School of Design before he moved to Tiffany & Co., Geoffrey Beene, and Billy Baldwin.

Les Touches Print, Cotton (8012138)



Blue 5



Tan 16



Bordeaux 9









Jasper Garden Print, Cotton (8012105)



Gold/Tan 416



Red/Teal 193

### *Jasper Garden Print, circa 1850*

**Jasper Garden Print (3 Colorways)**  
Jasper Garden is based on a mid-19th century French document. The design uses images derived from the French artist Jean Baptiste Pillement's popular 18th century engravings. Pillement combined Chinese themes in a particular and stylish manner which proved to be very popular. In this design, romantic figures within a landscape of exotic architecture and fantastic trees are enveloped in a riot of blossoms.





*Harmony Stripedocument, circa 1774-1790*

### Harmony Stripe (6 Colorways)

The 18th century fascination with chinoiserie continued into the reign of Louis XVI, and blended with the stripes and pastel colorings typical of late 18th century France. A striped silk from the period, now a part of the Brunschwig archive, has been reproduced in practical cotton. Its appealing blend of tree peonies, birds and towers on a serpentine branch amidst colorful accent stripes draw together the varied elements of a room scheme.

#### Harmony Stripe (8012126)



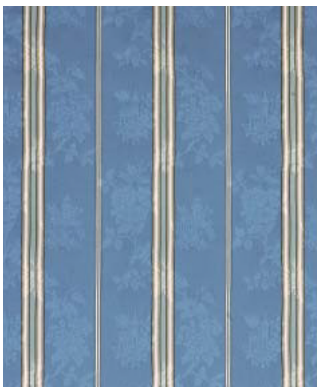
Dove 16



Cream 1



Red 19



Blue 5



Aqua 513



Green 3



*Mandarin Rose Print document, circa 1920*



*Zhen Velvet document, circa 18th century*

#### Mandarin Rose Print (4 Colorways)

This delicately drawn pattern of tree peonies and roses preserves the signs of its predecessors – 1920s pouchoir printed glazed chintzes in which metal stencils were employed to reproduce hand-painted Chinese silk floral designs. A slightly later document provided the point of departure for this pattern, and the result is available in four ethereal, tonal colorways on a crisp linen ground.

#### Zhen Velvet (4 Colorways)

Adapted from a document in the Brunswick archive, this 18th century design takes on a new and luxurious aspect as a velvet. The design is voided on a satin ground in an unexpectedly practical blend of cotton and “cupro” (an especially fine imitation of silk), all in a rich palette of jewel-like colors, evocative of the East.

Mandarin Rose Print, Linen (8012104)



Pink 7



Blue 5



Aqua 513



Green 3

Zhen Velvet (8012129)



Topaz 4



Ruby 9



Turquoise 13



Sapphire 5





Alto Velvet (8012141), colors China Blue 5, Grey/Beige 116, Red/Camel 196, Aqua/Sage 133



Palmette Linen Print (8012103), colors Green 3, Aqua 513, Linen 16, Coral 12



Tao Fretwork (8012111), colors Bamboo 16, Jasmine 40, Jade 3, Aqua 513, Sky Blue 15, Coral 12, Lacquer Red 2, Walnut 68





Lhasa Print, Linen (8012100)



Red 19



Blue 5



Aqua 513



Green 3



Clouds Embroidery (8012114)



Red 19



Blue 5

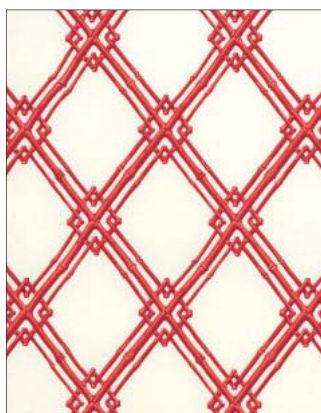


Aqua 513



Green 3

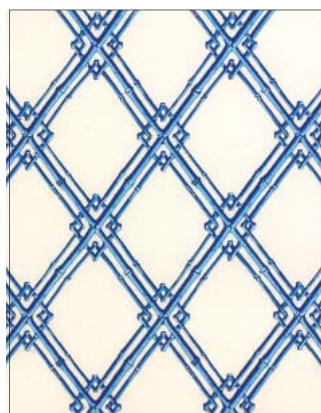
Bamboo Trellis Embroidery (8012123)



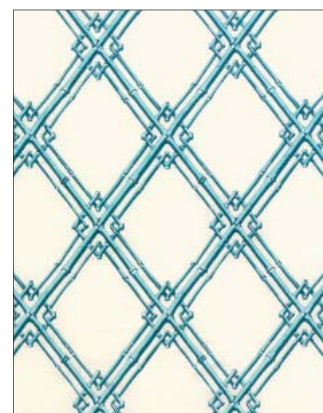
Red 19



Green 3



Blue 5



Aqua 513

Chan Paisley Print, Cotton (8012101)



Saffron 12

Chan Paisley Print, Cotton (8012101)



Blue 5

Chan Paisley Print, Linen (8012102)



Cinnabar 22

Shishi Print, Cotton (8012109)



Turquoise 13



Saffron 12



Poppy 19





# Brunschwig & Fils®

NEW YORK

PARIS

LONDON

US 800 538 1880 Canada 800 535 3258 UK 44 (0) 207 351 7760 [Brunschwig.com](http://Brunschwig.com)

Great Ming (8012125) in Twilight 5; Colorways Not Shown: Forest 3, Sage 513