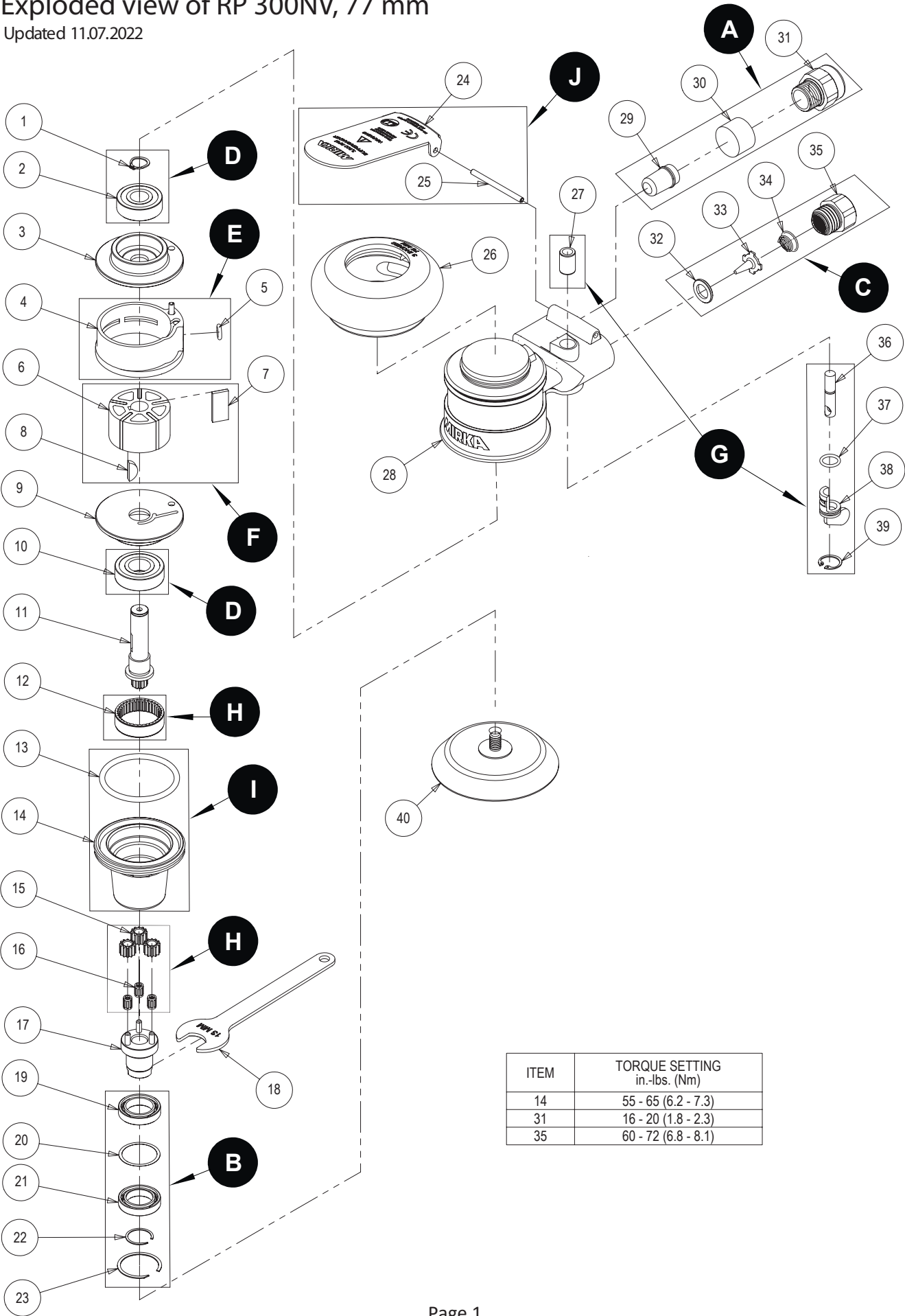


# Exploded view of RP 300NV, 77 mm

Updated 11.07.2022



ITEM	TORQUE SETTING in.-lbs. (Nm)
14	55 - 65 (6.2 - 7.3)
31	16 - 20 (1.8 - 2.3)
35	60 - 72 (6.8 - 8.1)

## RP 300NV, 77 mm Spare Part kits

**Note!** Repairs done by non-authorized repairer will breach the Mirka warranty.

Mirka Code	Item	Description	Kit	QTY	Part No
<b>8993017311</b>		<b>Muffler kit 12 000 rpm</b>			MPA0797
	29	Internal Muffler	<b>A</b>	1	MPA0062
	30	Muffler Insert		1	MPA0068
	31	Muffler Housing		1	MPA0166
					MPA2226
<b>8994222711</b>		<b>Spindle Bearing kit</b>			
	19	Bearing	<b>B</b>	1	MPA0147
	20	Spacer		1	MPA0213
	21	Bearing		1	MPA0148
	22	Retaining Ring		1	MPA0110
23	Retaining Ring	1		MPA0117	
<b>8993018811</b>		<b>Air Inlet kit</b>			MPA0798
	32	Valve Seat	<b>C</b>	1	MPA0009
	33	Valve		1	MPA0007
	34	Valve Spring		1	MPA0014
35	Inlet Bushing assembly (1/4-18 Npt)	1		MPA0013	
<b>8993019811</b>		<b>Endplate Bearing kit</b>			MPA0799
	1	Retaining Ring	<b>D</b>	1	MPA0040
	2	Bearing		1	MPA0021
10	Bearing	1		MPA0019	
<b>8993009211</b>		<b>Cylinder and O-Ring kit</b>			MPA0994
	4	Cylinder assembly	<b>E</b>	1	MPA0005
5	O-Ring 5 x 2 mm			1	MPA0042
<b>8993017711</b>		<b>Rotor, Vanes and Key kit</b>			MPA0801
	6	Rotor	<b>F</b>	1	MPB0005
	7	Vane		5	MPA0010
8	Key	1		MPA0041	
<b>8993019011</b>		<b>Speed Valve kit</b>			MPA0800
	27	Valve Sleeve	<b>G</b>	1	MPA0015
	36	Valve Stem assembly		1	MPA0008
	37	O-Ring 9x1.5 mm		1	MPA0043
	38	Speed Control		1	MPB0014
39	Retaining Ring	1		MPA0039	
<b>8994221811</b>		<b>Planet Gear kit</b>			MPA2930
	12	Ring Gear	<b>H</b>	1	MPA0151
	15	Planet Gear kit		3	MPA2636
16	Needle Bearing kit	3		MPA2638	
<b>8994242211</b>		<b>Spindle Housing and O-Ring kit</b>			MPA2901
	13	O-Ring 39.4 x 3.1 mm	<b>I</b>	1	MPA0045
14	Spindle Housing			1	MPB0060
<b>8993522411</b>		<b>Lever kit 3 000 rpm</b>			MPA2893
	24	Lever	<b>J</b>	1	MPA1168
25	Pin			1	MPA0031

Separate spare parts on next page.

## RP 300NV, 77 mm Spare Parts

Mirka Code	Item	Description	Kit	QTY	Part No
	1	Retaining Ring	D	1	MPA0040
	2	Bearing	D	1	MPA0021
<b>8993009311</b>	3	<b>Rear Endplate</b>		1	MPB0017
	4	Cylinder assembly	E	1	MPA0005
<b>8993008211</b>	5	<b>O-Ring 5 x 2 mm</b>	E	1	MPA0042
	6	Rotor	F	1	MPB0005
	7	Vane	F	5	MPA0010
	8	Key	F	1	MPA0041
<b>8993009411</b>	9	<b>Front Endplate</b>		1	MPB0016
	10	Bearing	D	1	MPA0019
<b>8994242511</b>	11	<b>Motor Shaft assembly</b>		1	MPA0293
<b>8994242011</b>	12	<b>Ring Gear</b>	H	1	MPA0151
	13	O-Ring 39.4 x 3.1 mm	I	1	MPA0045
	14	Spindle Housing	I	1	MPB0060
<b>8994241811</b>	15	<b>Planet Gear kit</b>	H	3	MPA2636
<b>8994241911</b>	16	<b>Needle Bearing kit</b>	H	3	MPA2638
<b>8994242411</b>	17	<b>Assembly to Planetary Spindle 1/4-20 UNC2B</b>		1	MPA0456
<b>8994008011</b>	18	<b>Pad Wrench 13 mm</b>		1	MPA0145
	19	Bearing	B	1	MPA0147
	20	Spacer	B	1	MPA0213
	21	Bearing	B	1	MPA0148
	22	Retaining Ring	B	1	MPA0110
	23	Retaining Ring	B	1	MPA0117
	24	Lever	J	1	MPA1168
	25	Pin	J	1	MPA0031
<b>8993013811</b>	26	<b>Grip 64 mm (2 1/2 In.) - (Optional)</b>		OPT.	MPA0288
<b>8993016011</b>	26	<b>Grip 70 mm (2 3/4 In.) - (Optional)</b>		OPT.	MPA0289
<b>8993013511</b>	26	<b>Grip 75 mm (3 In.) - (Standard)</b>		1	MPA0290
	27	Valve Sleeve	G	1	MPA0015
<b>8992411911</b>	28	<b>Housing</b>		1	MPA0703
	29	Internal Muffler	A	1	MPA0062
	30	Muffler Insert	A	1	MPA0068
	31	Muffler Housing	A	1	MPA0166
	32	Valve Seat	C	1	MPA0009
	33	Valve	C	1	MPA0007
	34	Valve Spring	C	1	MPA0014
	35	Inlet Bushing assembly (1/4-18 Npt)	C	1	MPA0013
	36	Valve Stem assembly	G	1	MPA0008
	37	O-Ring 9x1.5 mm	G	1	MPA0043
	38	Speed Control	G	1	MPB0014
	39	Retaining Ring	G	1	MPA0039
<b>8294791311</b>	40	<b>Backing Pad 77mm 1/4" Grip Medium</b>		1	