

GB-414 SERIES™

GENERATION 3 REBUILDABLE PIPELINE INJECTION PUMP

FEATURES & BENEFITS

DIMENSIONALLY INTERCHANGEABLE WITH EQUIVALENT GEN 2 GP-414 SIZES

- New advanced materials on critical internal wear surfaces
- Enhanced wear resistance and durability extend pump life

REBUILDABLE DESIGN

- All internal wear components are easily replaceable
- Simple disassembly and reassembly process saves time and money
- Complete rebuild kit brings the pump back to as-new operating condition

UPGRADED & RELIABLE SEALING SOLUTION

- Type 2 bellows seal with standard 200 PSI inlet rating does not require the pump or motor placement to be moved for a seal change
- Robust axial thrust control bearing reduces premature seal failure due to elevated inlet pressure, starts, stops, and other unique application conditions

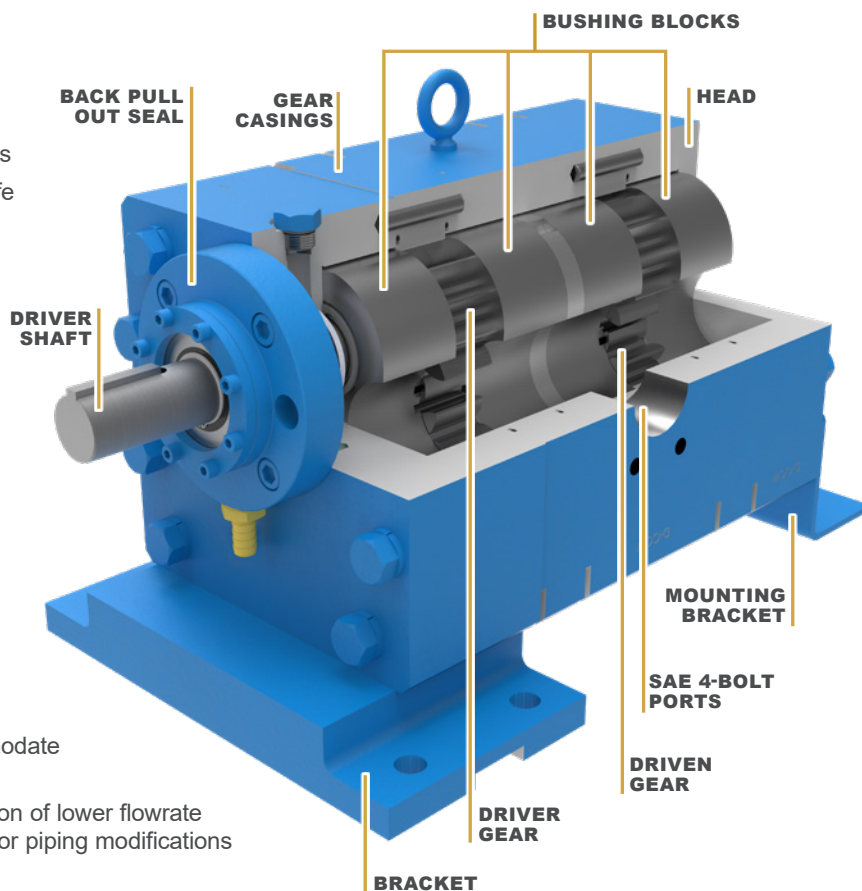
MODULAR PORT DESIGN

- Standard 180° ports with weld neck adapters to accommodate the flange of your choice
- Common Port Location (CPL) feature allows for installation of lower flowrate pumps when well production decreases without welding or piping modifications

COMPACT FOOTPRINT

- 7' unit length on largest pump and motor assembly
- Motor speed operation eliminates the need for gear reducers or belt drives
- Units include small, rigid formed steel baseplate complete with spacer coupling and coupling guard

PERFORMANCE



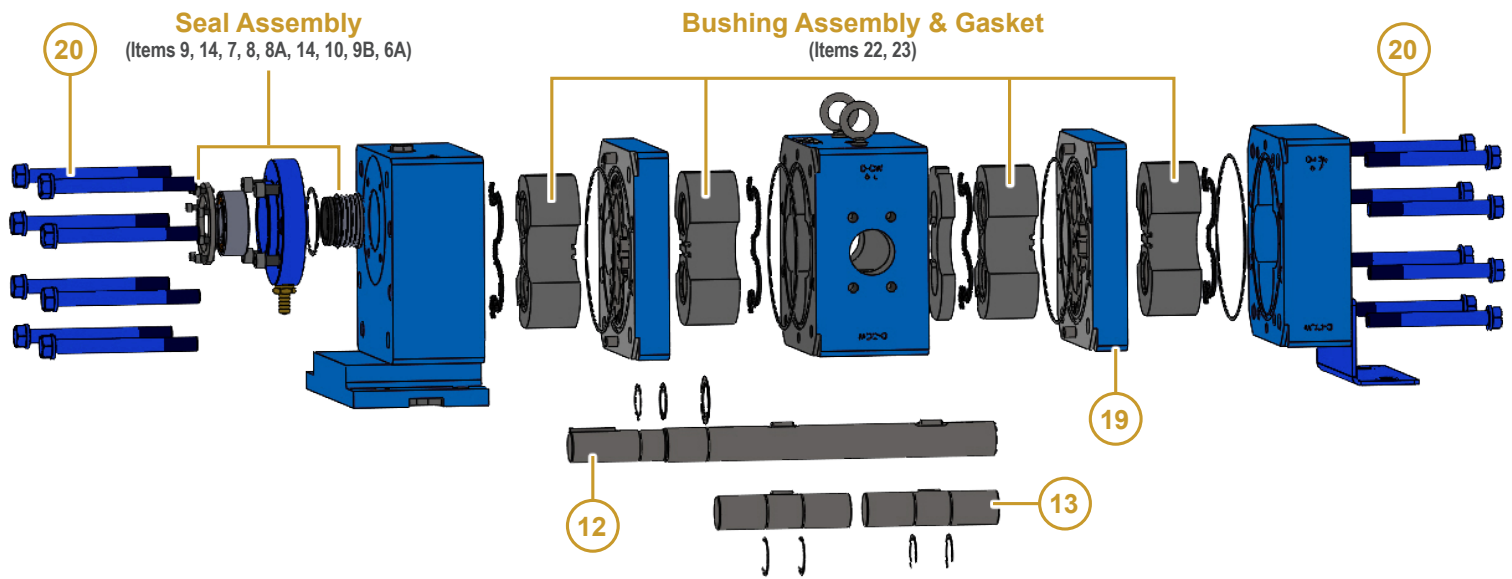
| Pump Model | Port Size & Type* | Nominal Flow @ 750PSI (1,775 rpm) on 4 cP ** | | | Nominal Flow @ 1,500PSI (1,775 rpm) on 4 cP ** | | | Max Continuous Pressure | Max Recommended Temperature | Approximate Shipping Weight (Pump Only) |
|------------|----------------------|---|-----|------|---|-----|------|----------------------------|--------------------------------|--|
| | | GPM | BPH | BPD | GPM | BPH | BPD | | | |
| GB-41415 | 2" SAE | 46 | 66 | 1587 | 40 | 57 | 1366 | 1500 | 350 | 225 |
| GB-41420 | 2" SAE | 60 | 85 | 2045 | — | — | — | 750 | 350 | 233 |
| GB-41430 | 2" SAE | 94 | 134 | 3208 | 81 | 116 | 2779 | 1500 | 350 | 322 |
| GB-41440 | 3" SAE | 120 | 172 | 4138 | — | — | — | 750 | 350 | 334 |
| GB-41445 | 3" SAE | 141 | 201 | 4833 | 122 | 175 | 4202 | 1500 | 350 | 437 |
| GB-41455 | 3" SAE | 168 | 240 | 5760 | — | — | — | 750 | 350 | 453 |
| GB-41460 | 4" | 182 | 260 | 6230 | — | — | — | 750 | 350 | 500 |

* 2" and 3" SAE ports use J518 Code 61 SAE flange ports. 4" port uses 3000 Series square flange.

** For lower flow Pipeline Injection applications, consult Viking for available options in our GB-410 Series™ pumps.

For more information, visit vikingpump.com/Pipeline-Injection

REPLACEABLE INTERNALS



| Item | Name of Part | Seal Kit | Complete Rebuild Kit |
|------|--------------------------|----------|----------------------|
| 1 | Bracket | | |
| 6 | Seal Holder | | |
| 6A | Cap Screws | ✓ | ✓ |
| 7 | Seal Holder Oring | ✓ | ✓ |
| 8 | Mech Seal - FKM/Sil- Cab | ✓ | ✓ |
| 8A | Seal Washer | ✓ | ✓ |
| 9 | Dbl Row Ball Bearing | ✓ | ✓ |
| 9A | Bearing End Cap | | |
| 9B | Cap Screws | ✓ | ✓ |
| 10 | Beveled Retaining Ring | ✓ | ✓ |
| 11 | Section Orings | | ✓ |
| 12 | Driver Shaft | | ✓ |
| 13 | Driven Shaft | | ✓ |
| 14 | Retaining Ring | ✓ | ✓ |

| Item | Name of Part | Seal Kit | Complete Rebuild Kit |
|------|-------------------------------|----------|----------------------|
| 14 | Retaining Ring (Seal) | ✓ | ✓ |
| 14 | Retaining Ring (Gears) | | ✓ |
| 15 | Gear Pin | | ✓ |
| 19 | Casing & Gear Set | | ✓ |
| 20 | Cap Screws (Bracket) | | ✓ |
| 20 | Cap Screws (Head) | | ✓ |
| 20A | Lock Washer | | ✓ |
| 22 | Bushing Assembly | | ✓ |
| 23 | Gasket | | ✓ |
| 24 | Separation Plate Spacer | | |
| 26 | Shaft Key | | ✓ |
| 27 | Head | | |
| 29 | Separation Plate - With Ports | | |

NOTE: Some items included in the rebuild kit not called out in above image. Contact your Viking Pump® representative for additional Rebuild Kit details.

VIKING PUMP®

VIKING PUMP, INC.
A Unit of IDEX Corporation
406 State Street
Cedar Falls, Iowa 50613 U.S.A.
vikingpump.com

IDEX



PRINTED ON 100% RECYCLED PAPER.

CONTACT YOUR
VIKING PUMP®
OIL & LACT PUMP
SPECIALISTS

vikingpump.com/pipeline-injection

