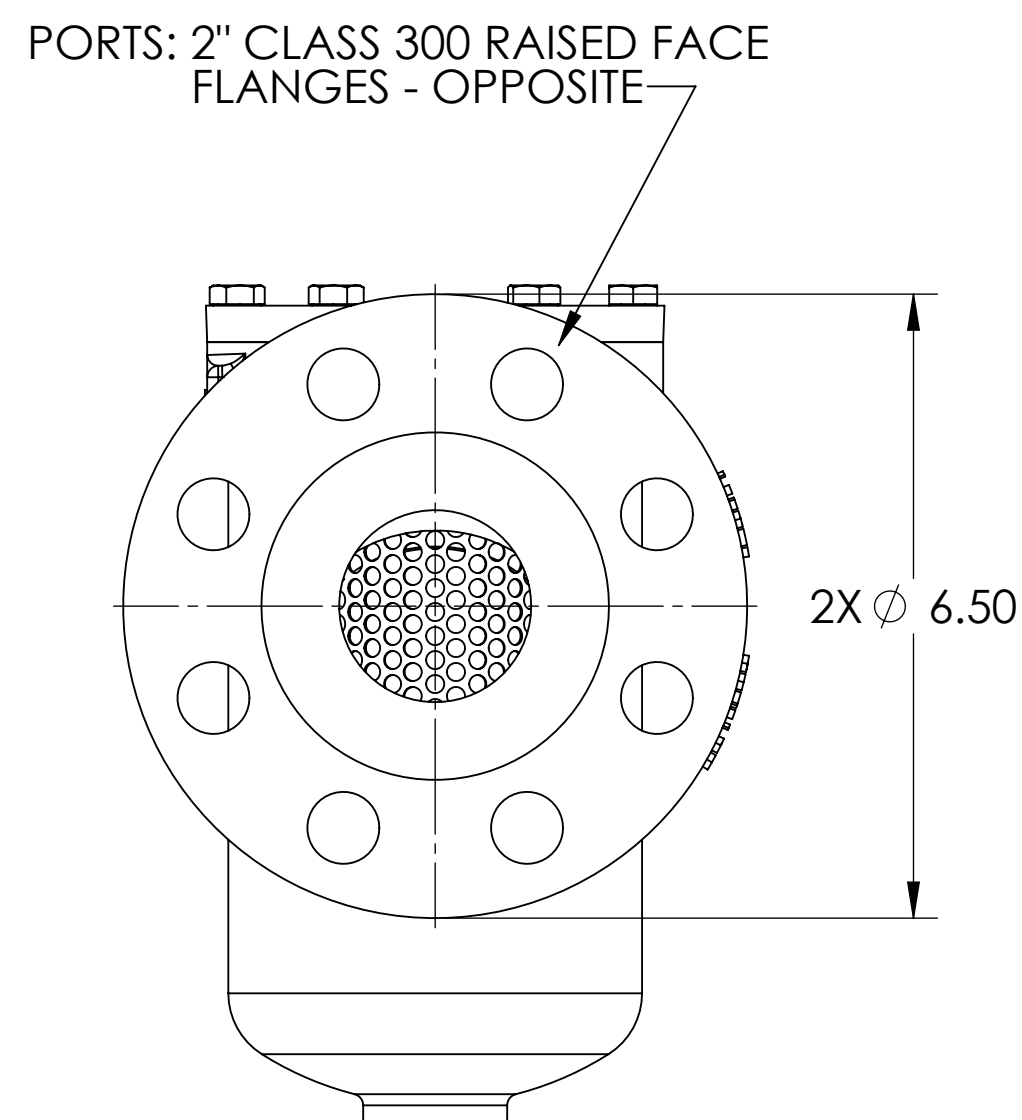
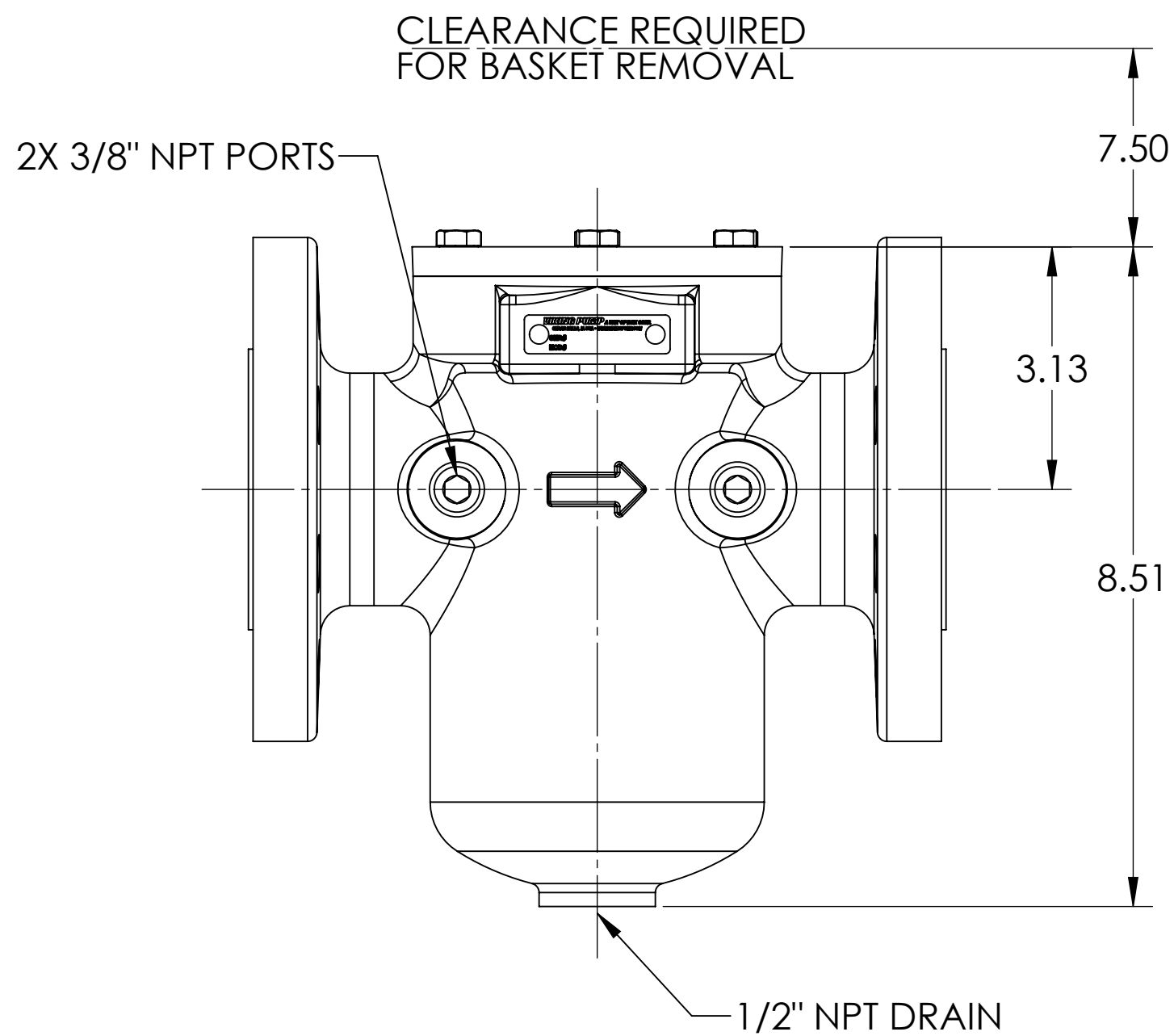
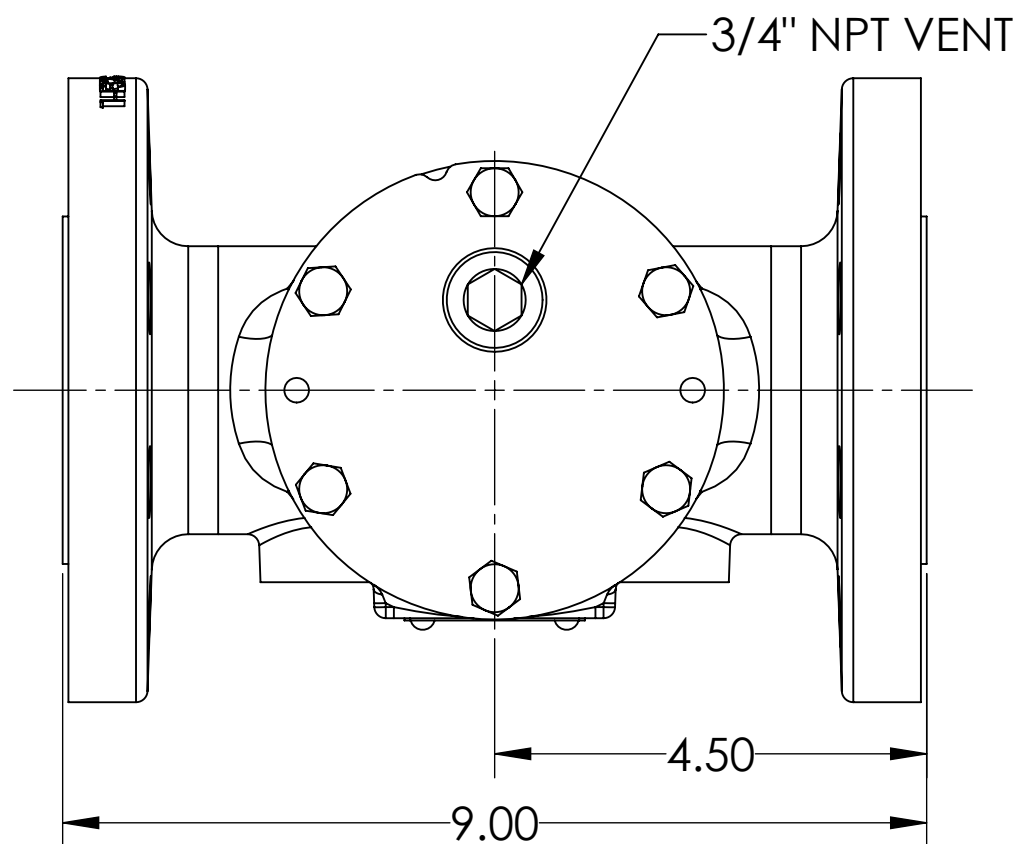


REVISIONS			
REV.	DESCRIPTION	ECN	DATE
A.0	1. CREATED PER E184		10/15/2015



MESH	10	20	40	60	80	100	USE AND RELATED INFORMATION
OPENING (INCHES)	.075	.034	.015	.0092	.007	.0055	
OPENING (MICRONS)	1910	860	380	230	190	140	MATERIAL: SEE PARTS FOR MATERIAL SPEC
							WAS:

----- UNLESS OTHERWISE SPECIFIED -----  
 DIMENSIONS ARE IN **INCHES**.  
 INTERPRET DIM AND TOLERANCES PER VIKING PUMP ES-47  
 BREAK EDGES .005-.015 RADIUS OR CHAMFER  
 .XX ±.02 .XXX ±.005 ANGLES ±1°

ALL FINISHED SURFACES  $\nabla_{250}$  (AA  $\nabla_{.030}$  CUTOFF)  
 ACCEPTABILITY OF SCREW THREADS SHALL BE  
 DETERMINED BASED ON SYSTEM 21 ASME B1.3



STATE	Released	10/16/2015
DRAWN	jpierce	10/15/2015
CHECKED	JAG	10/15/2015
PROJECT	E184	
SCALE:	1:2	
CASTING NUMBER		
	<b>3D</b>	WEIGHT: 30.17LBS

**VIKING PUMP** VIKING PUMP, INC.  
 A Unit of IDEX Corporation  
 Cedar Falls, IA 50613  
 U.S.A.

THIS DRAWING IS THE PROPERTY OF  
 VIKING PUMP, INC. AND IS PROPRIETARY  
 IN GENERAL AND DETAIL. IT SHALL NOT BE  
 COPIED OR ITS CONTENTS REVEALED TO  
 OUTSIDE PARTIES WITHOUT THE WRITTEN  
 CONSENT OF VIKING PUMP, INC.

STRAINER ASSEMBLY, 2" CLASS 300 OPPOSITE  
 FLANGED PORTS, BOLT ON LID

SIZE	DWG. NO.	SHEET 1 OF 1	REV
<b>CF-1020-H</b>			<b>A.0</b>