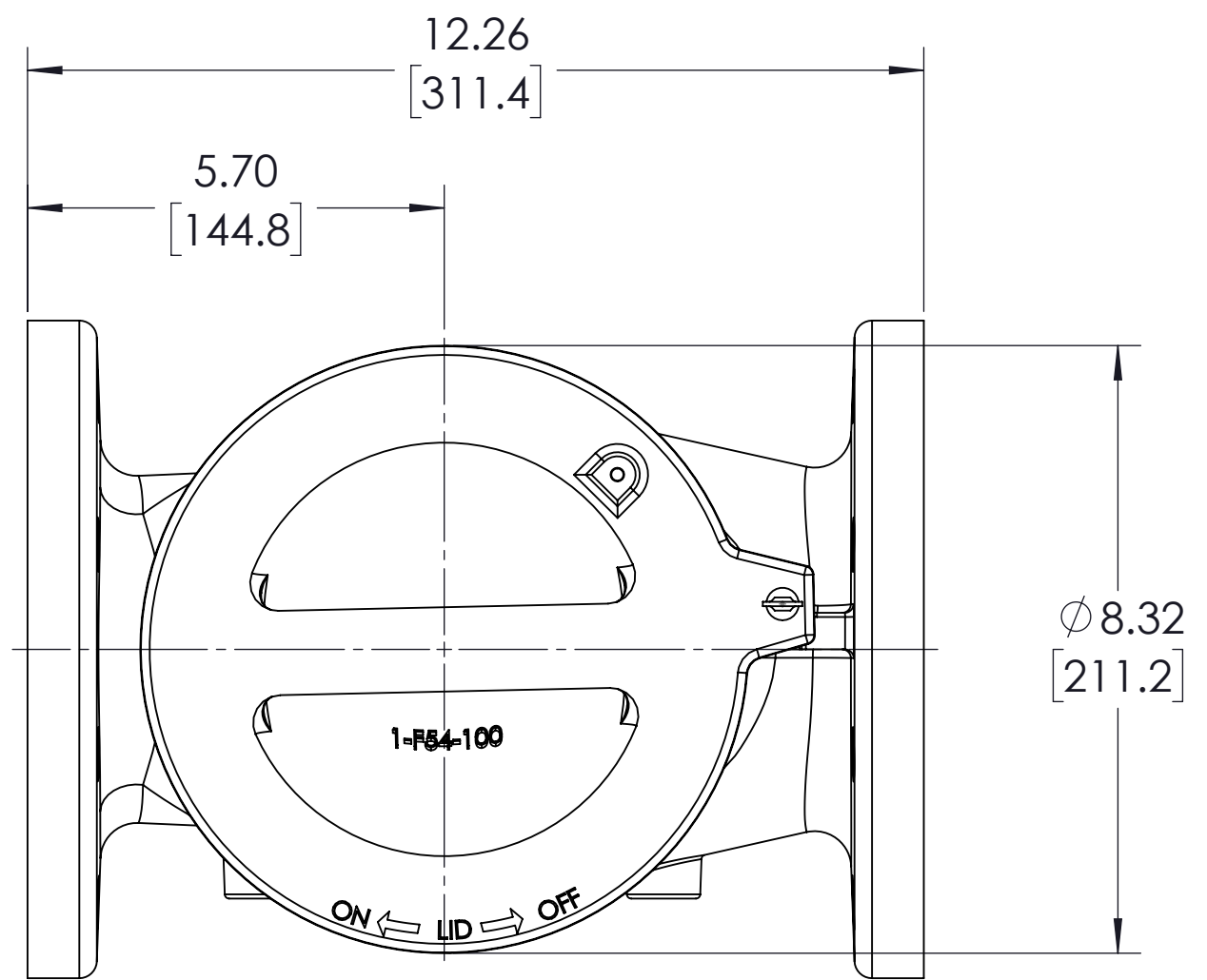
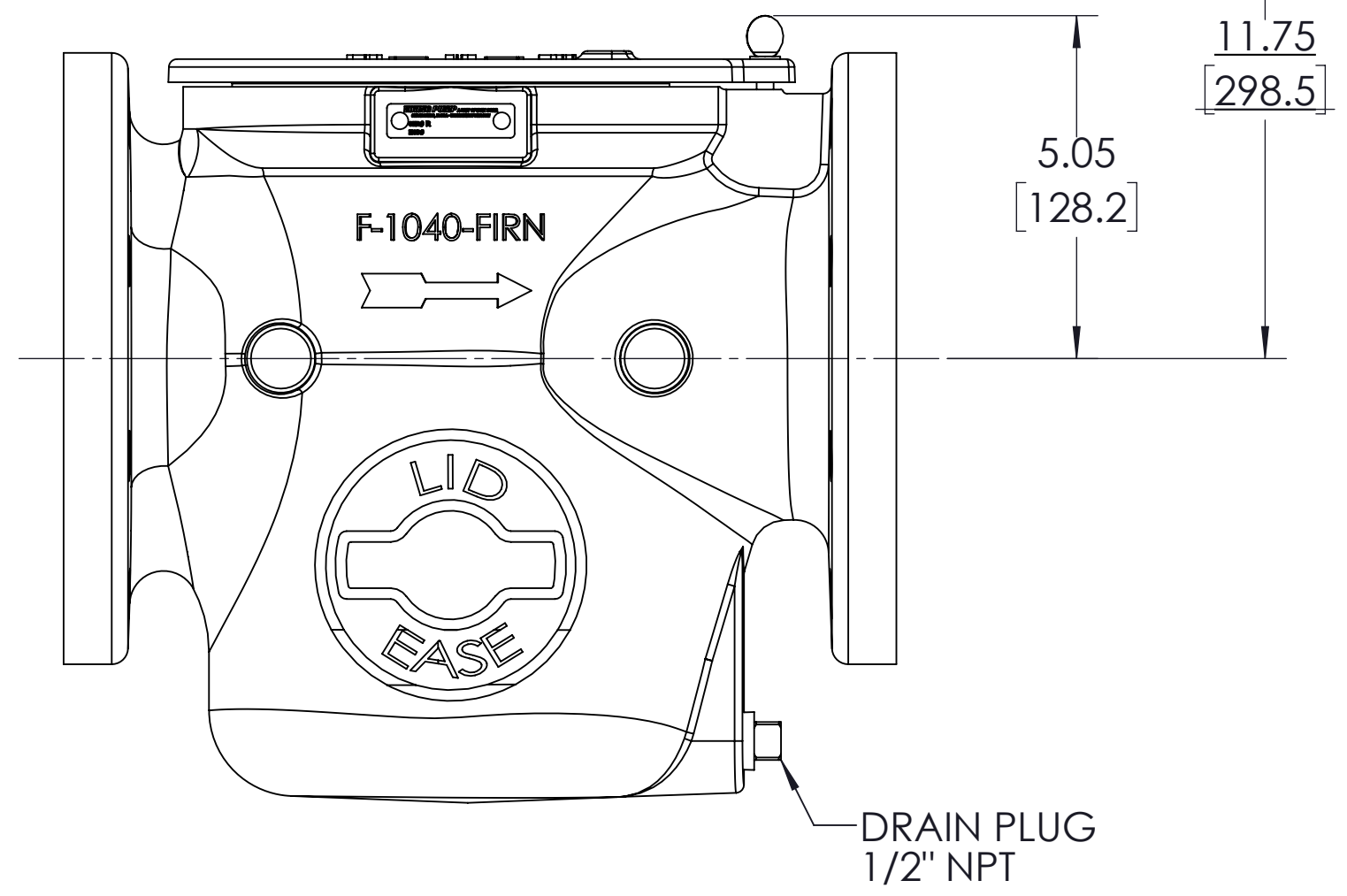


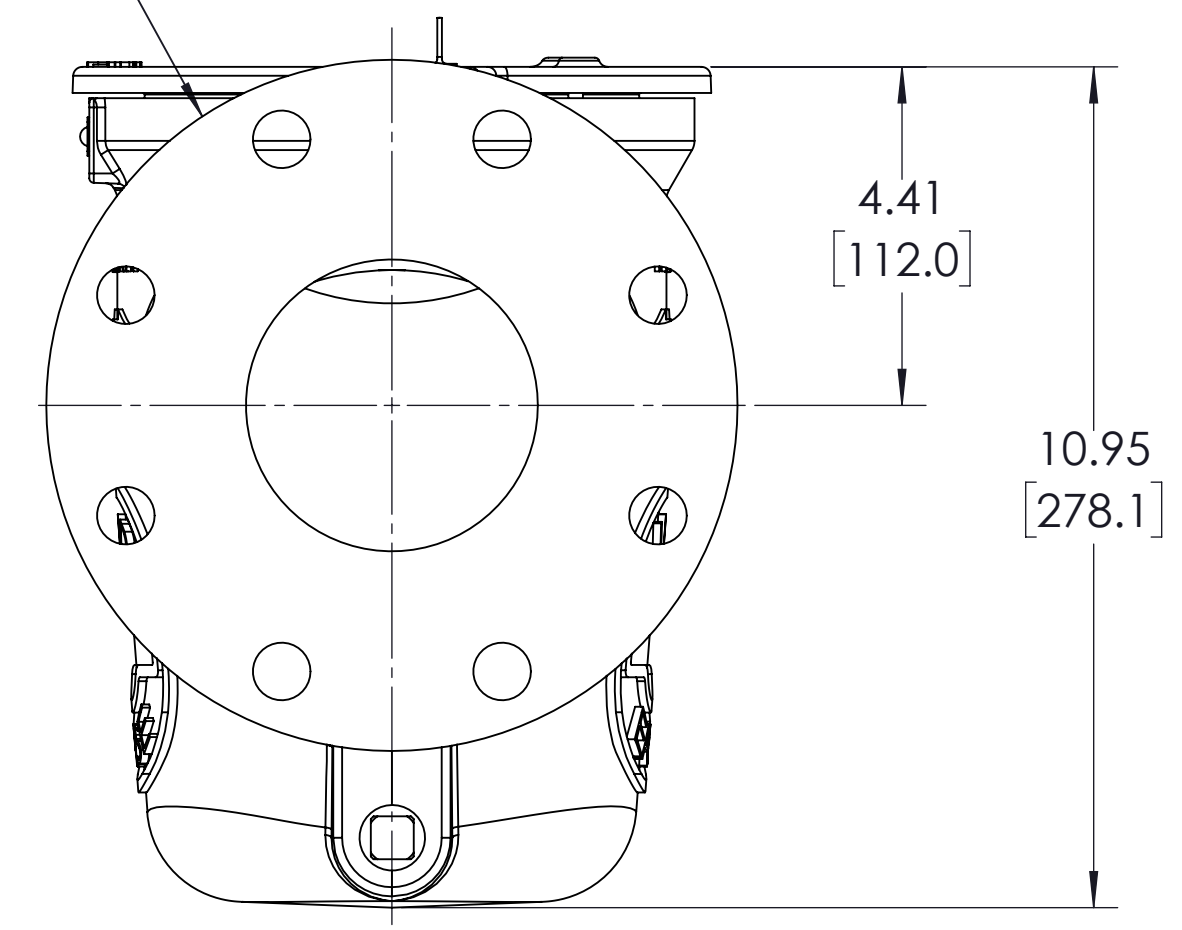
REVISIONS			
REV.	DESCRIPTION	ECN	DATE
A.3	1. REMOVED F-1040-FALM-XXX FROM TITLE BLOCK		5/11/2015
B.0	1. REMOVED F-1040-FDUC-XXX FROM TITLE BLOCK	ELP-00002	2/6/2016
C.0	1. CONVERTED TO 3D		12/7/2021



CLEARANCE REQUIRED FOR BASKET REMOVAL



PORTS: 2X 4" FLANGES COMPATIBLE FOR USE WITH CLASS 125 AND 150 ANSI FLANGES



NOTES:
1. REFER TO VIKING CATALOG SECTION 640 FOR -XXX MODEL NUMBER CLARIFICATION.

MESH	10	20	40	60	80	100
OPENING (INCHES)	.075	.034	.015	.0092	.007	.0055
OPENING (MICRONS)	1910	860	380	230	190	140

USE AND RELATED INFORMATION

MATERIAL:
SEE PARTS FOR MATERIAL SPEC

WAS:

UNLESS OTHERWISE SPECIFIED DIMENSIONS ARE IN INCHES.
INTERPRET DIM AND TOLERANCES PER VIKING PUMP ES-47
BREAK EDGES .005-.015 RADIUS OR CHAMFER
.XX ±.02 .XXX ±.005 ANGLES ±1°

ALL FINISHED SURFACES ∇_{250} (AA $\frac{.030}{\text{CUTOFF}}$)

ACCEPTABILITY OF SCREW THREADS SHALL BE DETERMINED BASED ON SYSTEM 21 ASME B1.3

THIRD ANGLE PROJECTION

STATE	Released	12/08/2021
DRAWN	rmennenga	7/1/2011
CHECKED	GDJ	12/08/2021
PROJECT	3D	
SCALE:	2:5	
CASTING NUMBER		

VIKING PUMP VIKING PUMP, INC.
A Unit of IDEX Corporation
Cedar Falls, IA 50613 U.S.A.
VIKINGPUMP.COM

THIS DRAWING IS THE PROPERTY OF VIKING PUMP, INC. AND IS PROPRIETARY IN GENERAL AND DETAIL. IT SHALL NOT BE COPIED OR ITS CONTENTS REVEALED TO OUTSIDE PARTIES WITHOUT THE WRITTEN CONSENT OF VIKING PUMP, INC.

STRAINER ASSEMBLY, 4" FLANGES - MODELS F-1040-FIRN-XXX, F-1040-FSST-XXX

SIZE DWG. NO. SHEET 1 OF 1 REV
CF-1040-F C.0