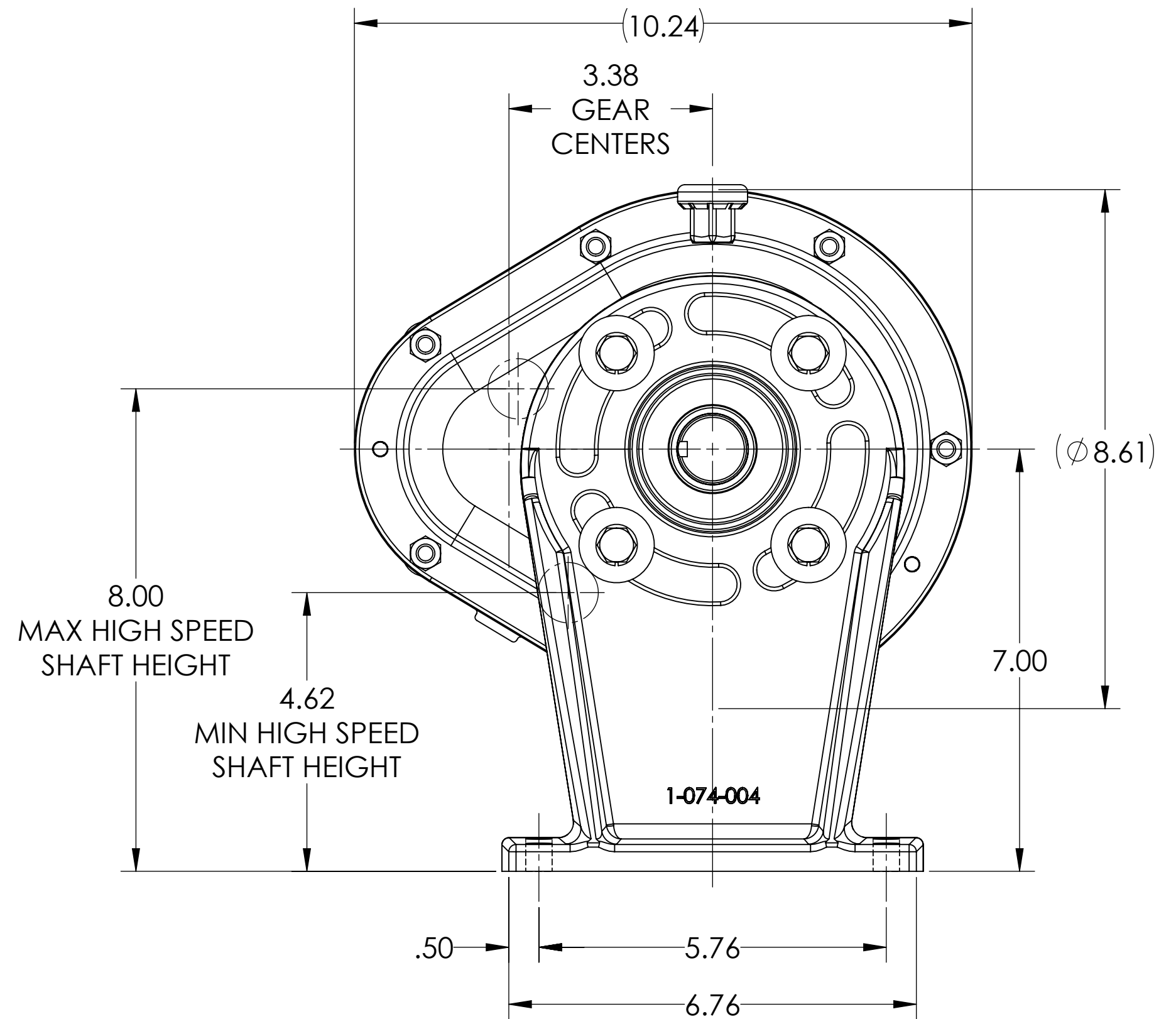
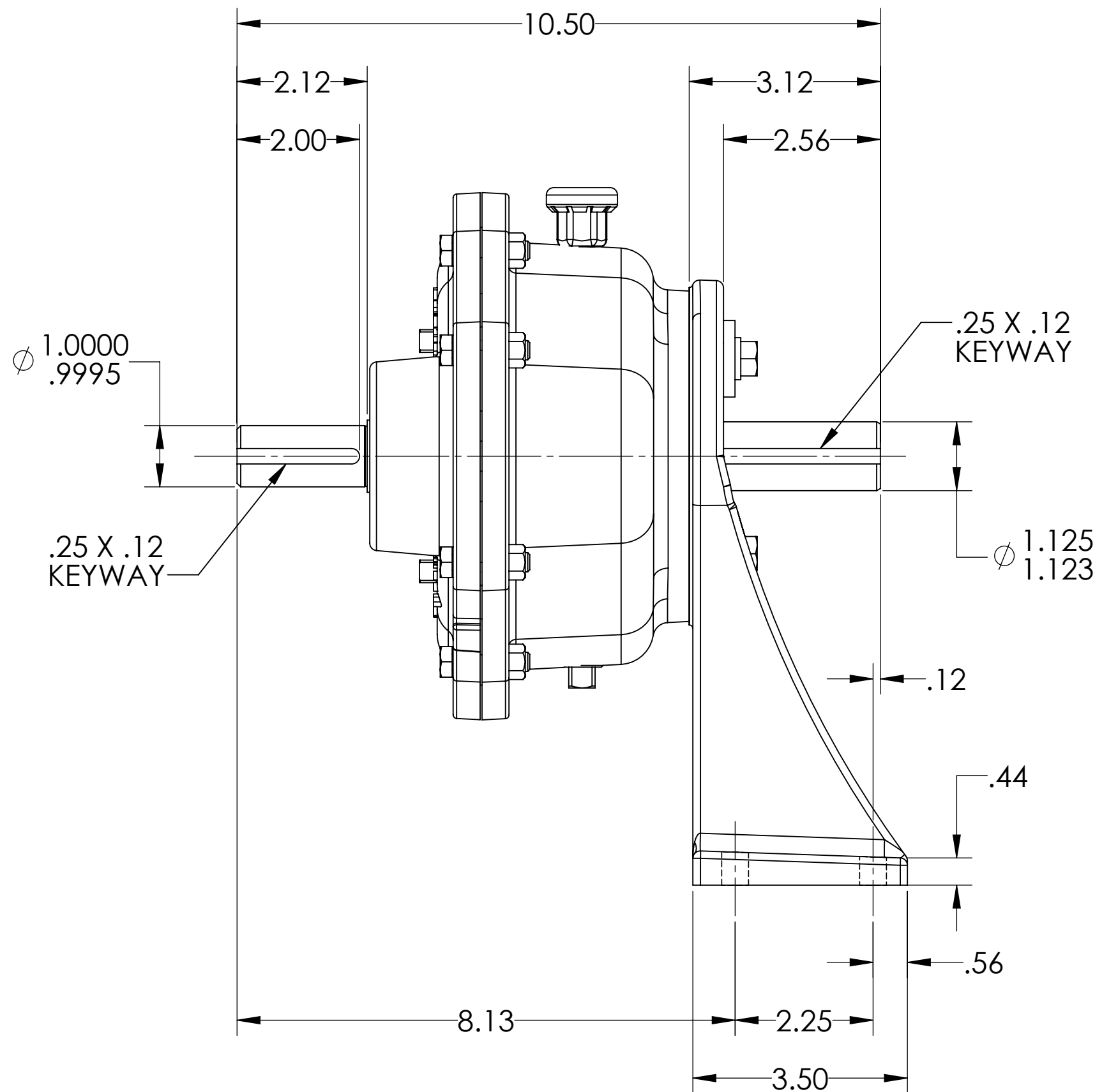
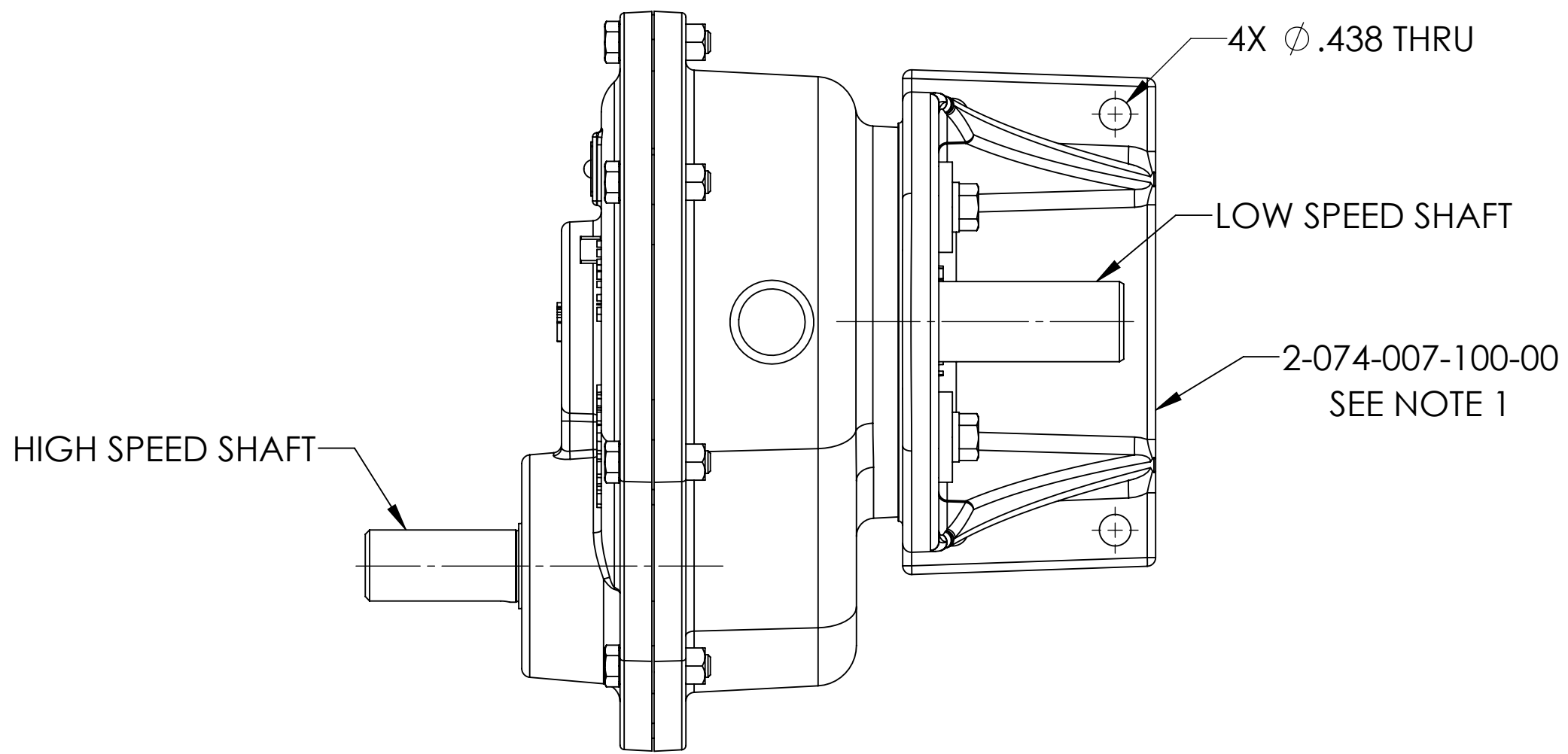


REVISIONS			
REV.	DESCRIPTION	ECN	DATE
C.0	1. CONVERTED FROM ME10		10/28/2016



NOTES:
1. SEE OTHER SHEETS FOR MORE BRACKET OPTIONS.

USE AND RELATED INFORMATION
MATERIAL: SEE PARTS FOR MATERIAL SPEC
WAS:

UNLESS OTHERWISE SPECIFIED
DIMENSIONS ARE IN **INCHES**.
INTERPRET DIM AND TOLERANCES PER VIKING PUMP ES-47
BREAK EDGES .005-.015 RADIUS OR CHAMFER
.XX \pm .02 .XXX \pm .005 ANGLES \pm 1°

ALL FINISHED SURFACES ∇ (AA) $\frac{250}{.030}$ CUTOFF
ACCEPTABILITY OF SCREW THREADS SHALL BE
DETERMINED BASED ON SYSTEM 21 ASME B1.3

THIRD ANGLE PROJECTION

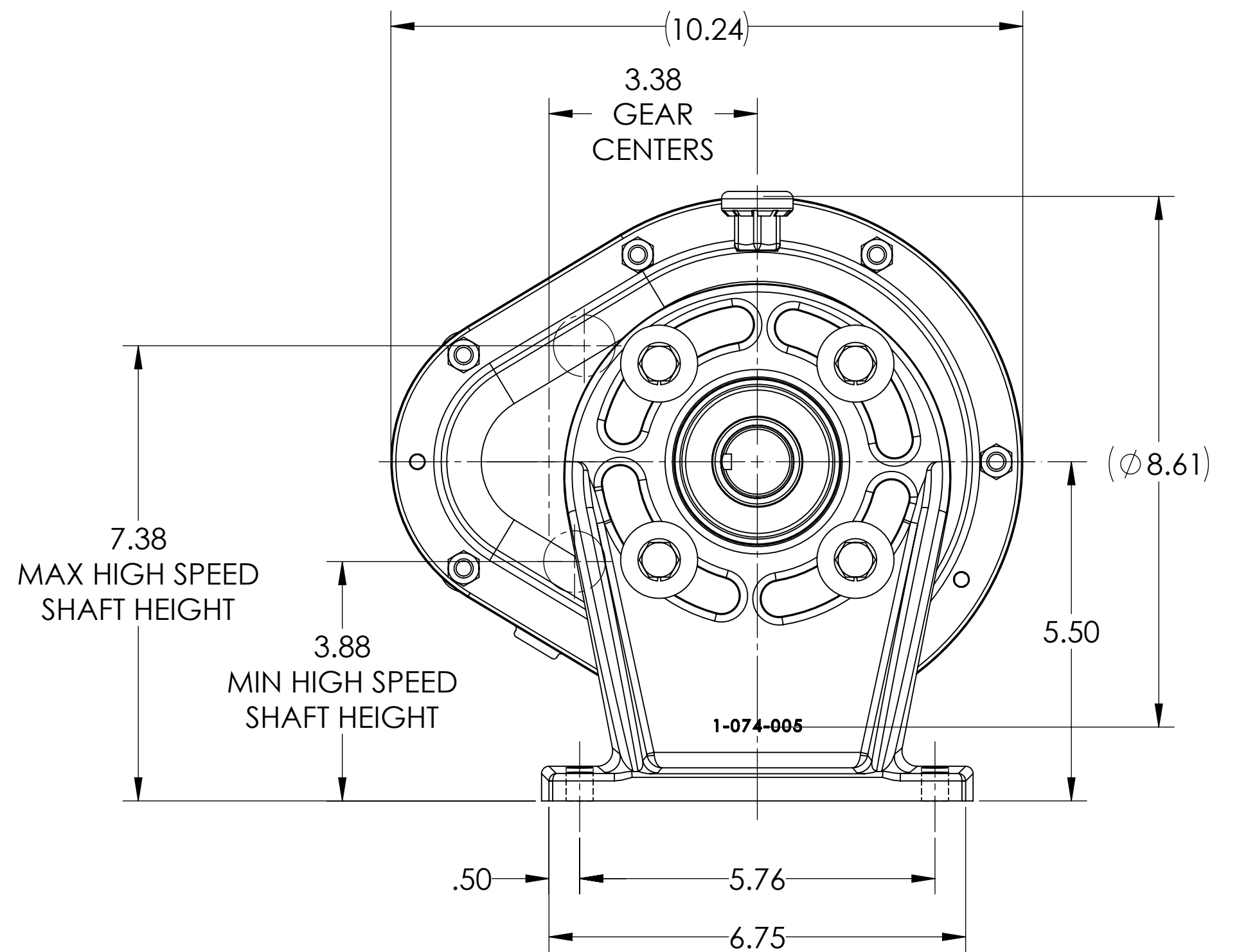
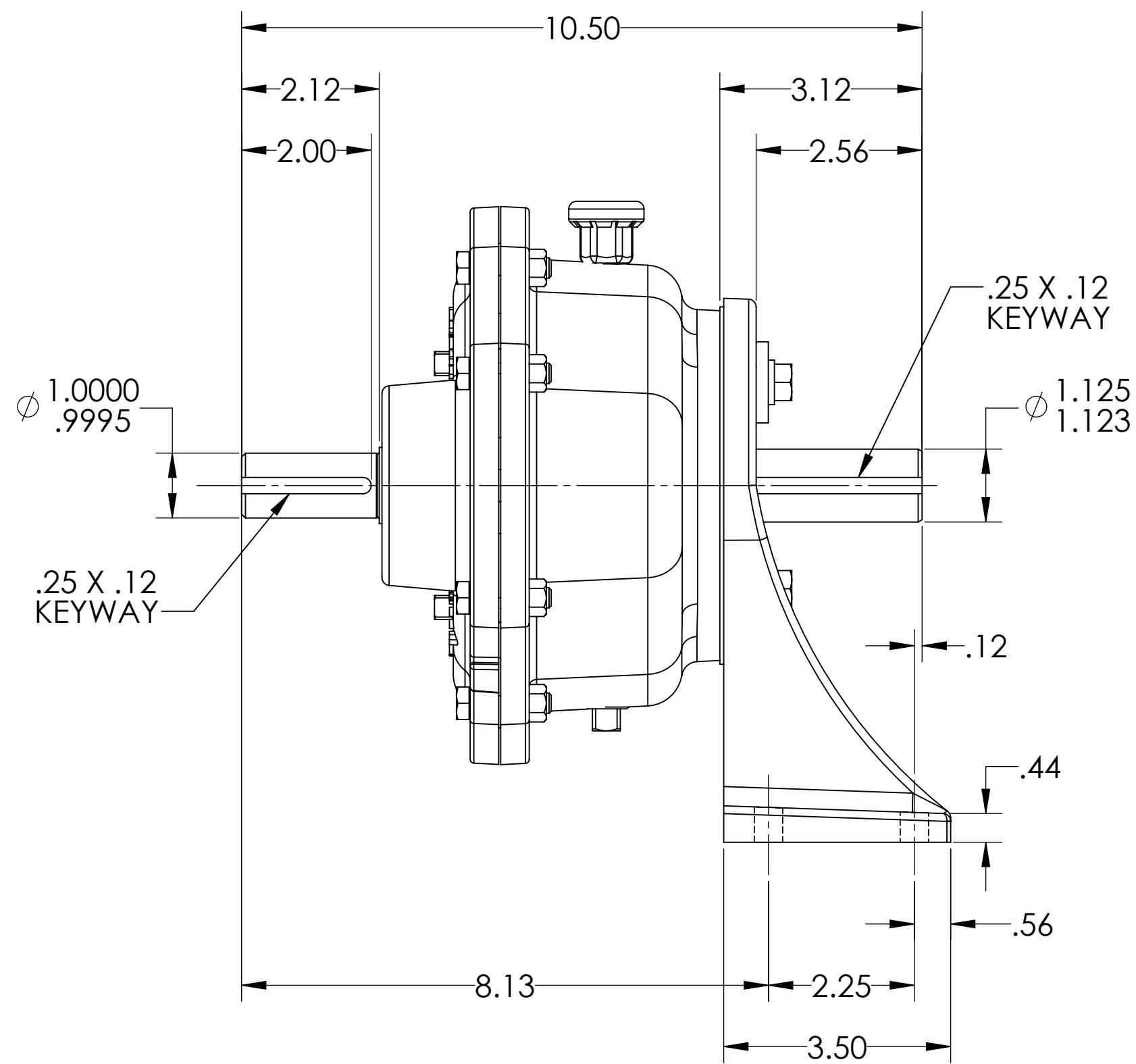
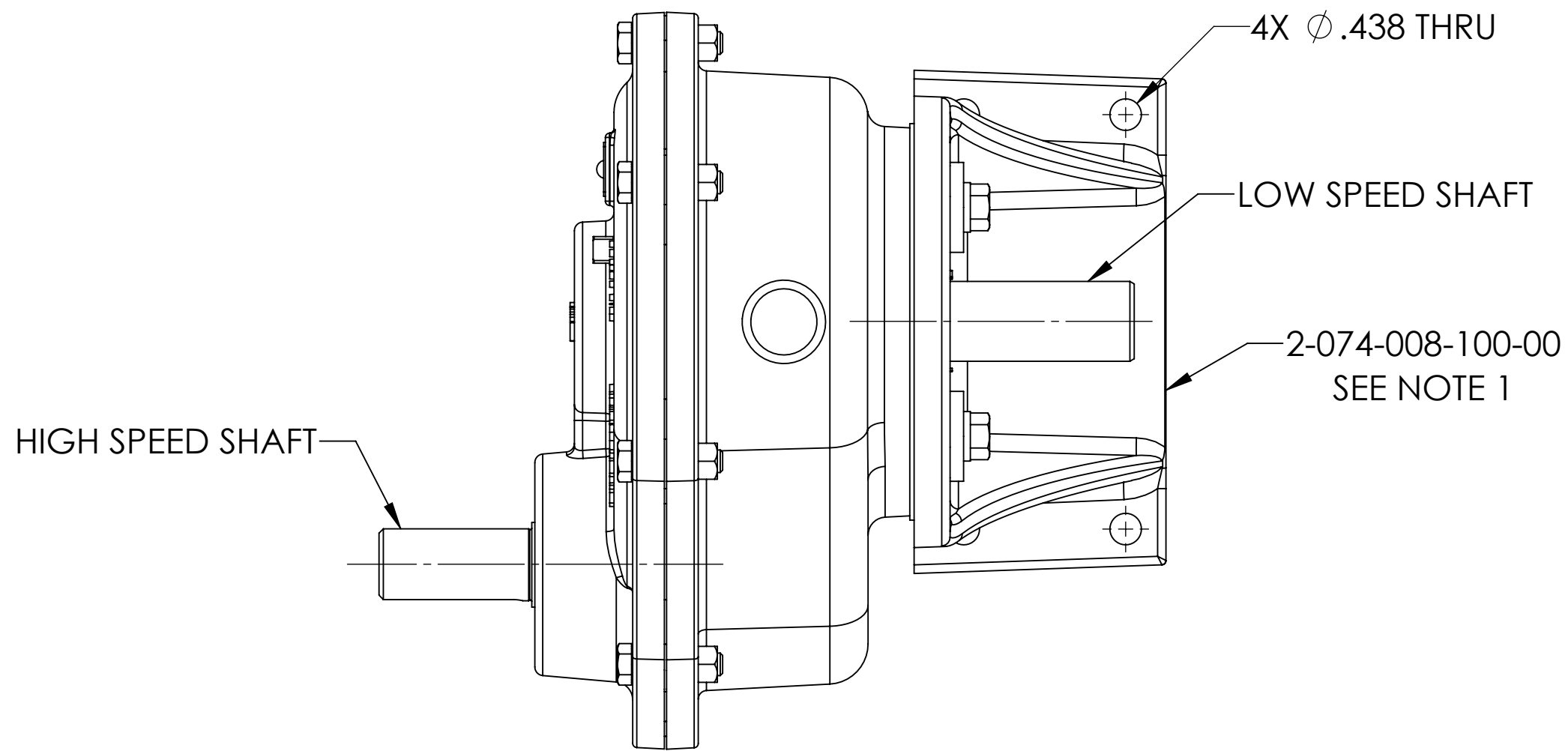
STATE	Released	11/01/2016
DRAWN	ANHansen	10/28/2016
CHECKED	BAM	10/31/2016
PROJECT	3D	WEIGHT: 38.32LBS
SCALE: 1:2		
CASTING NUMBER		

VIKING PUMP
VIKING PUMP, INC.
A Unit of IDEX Corporation
Cedar Falls, IA 50615
U.S.A.

THIS DRAWING IS THE PROPERTY OF
VIKING PUMP, INC. AND IS PROPRIETARY
IN GENERAL AND DETAIL. IT SHALL NOT BE
COPIED OR ITS CONTENTS REVEALED TO
OUTSIDE PARTIES WITHOUT THE WRITTEN
CONSENT OF VIKING PUMP, INC.

VIKING 'B' SIZE REDUCER WITH FOOT BRACKET

SIZE	DWG. NO.	SHEET 1 OF 3	REV
C	3-551-000-00B-00		C.0



NOTES:
1. SEE OTHER SHEETS FOR MORE BRACKET OPTIONS

USE AND RELATED INFORMATION

MATERIAL:
SEE PARTS FOR MATERIAL SPEC

WAS:

UNLESS OTHERWISE SPECIFIED
DIMENSIONS ARE IN **INCHES**.
INTERPRET DIM AND TOLERANCES PER VIKING PUMP ES-47
BREAK EDGES .005-.015 RADIUS OR CHAMFER
.XX ±.02 .XXX ±.005 ANGLES ±1°

ALL FINISHED SURFACES $\sqrt{250}$ (AA .030 CUTOFF)
ACCEPTABILITY OF SCREW THREADS SHALL BE
DETERMINED BASED ON SYSTEM 21 ASME B1.3

THIRD ANGLE PROJECTION

STATE	Released	11/01/2016
DRAWN	ANHansen	10/28/2016
CHECKED	BAM	10/31/2016
PROJECT	3D	WEIGHT:
SCALE: 1:2		36.53
CASTING NUMBER		

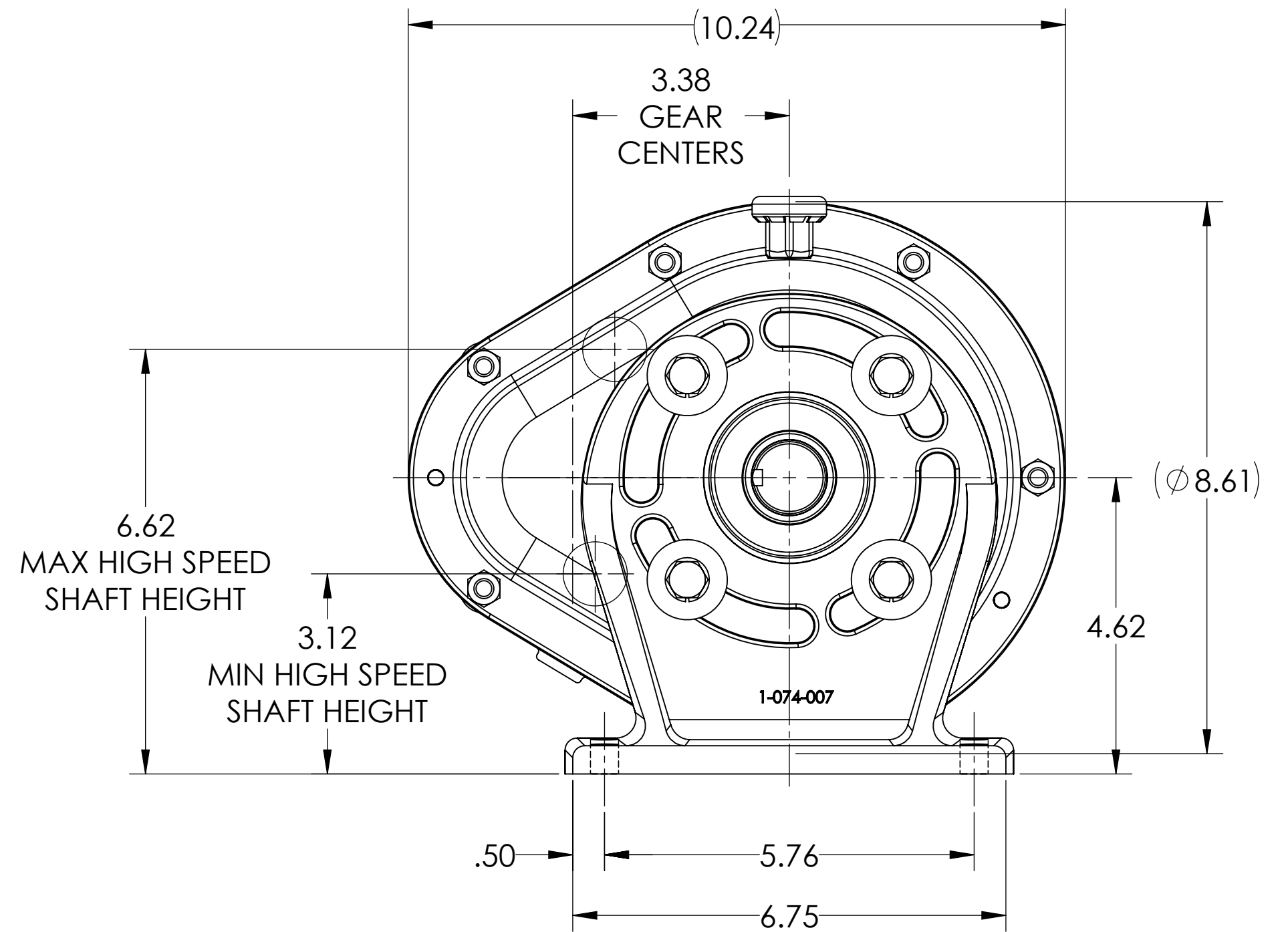
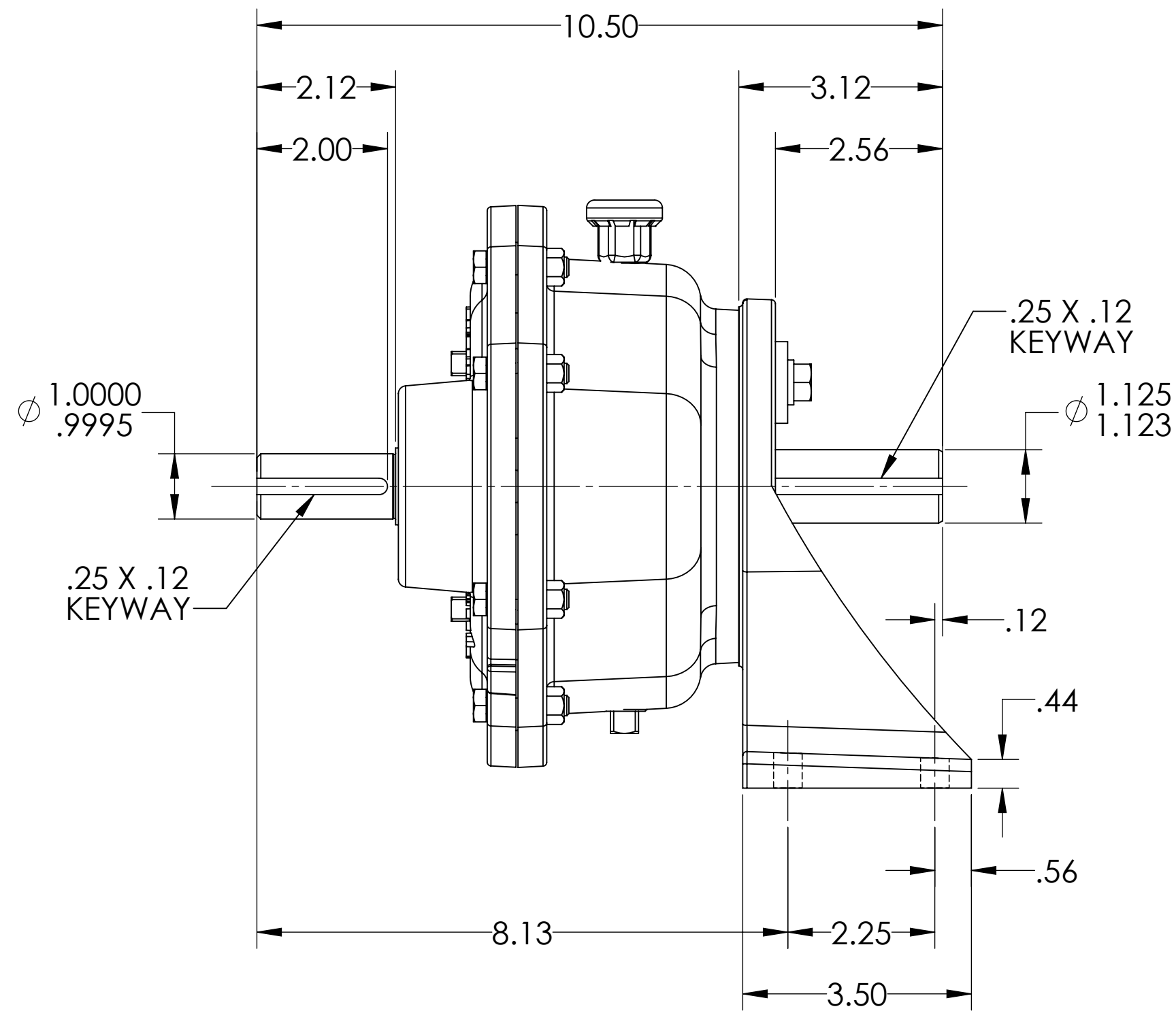
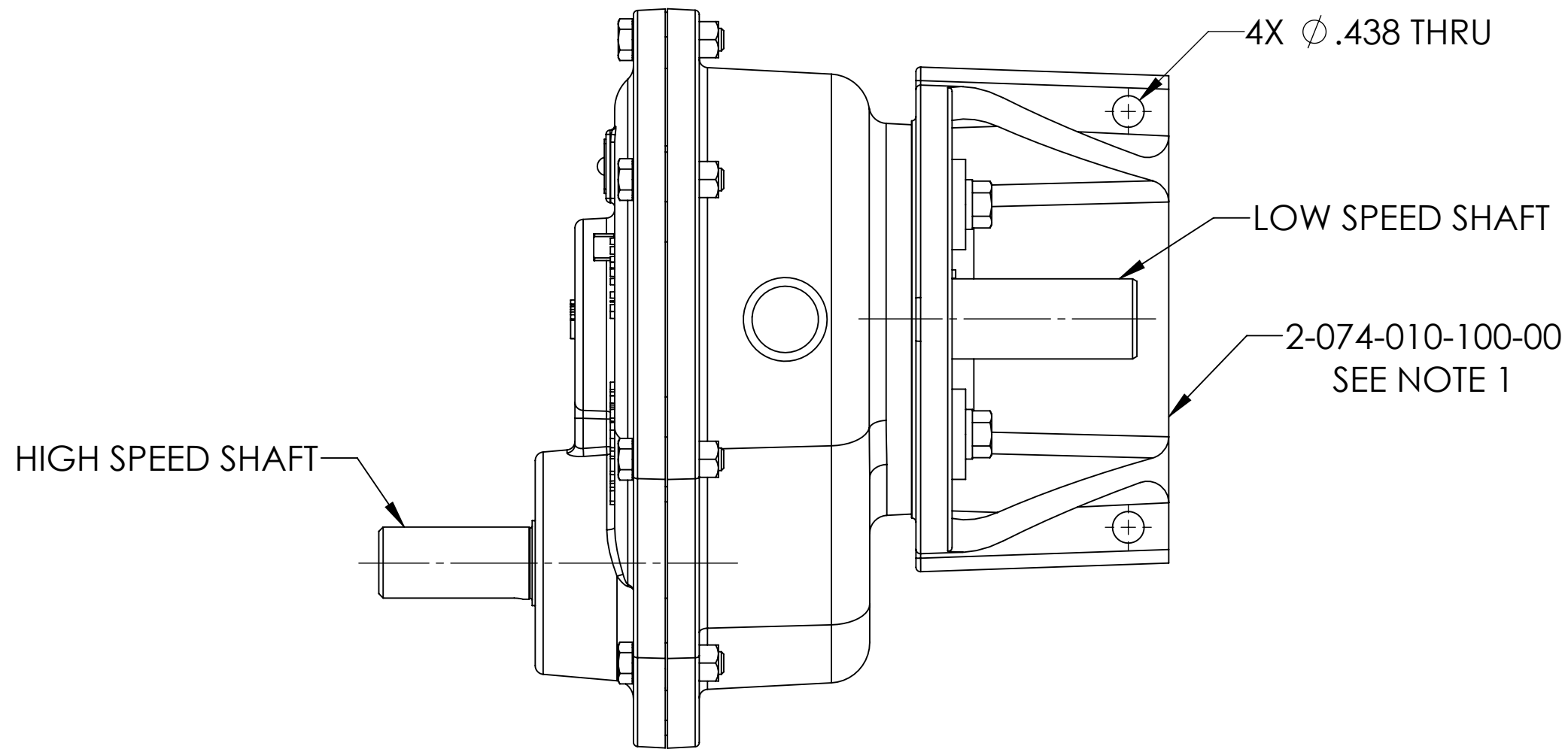
VIKING PUMP

VIKING PUMP, INC.
A Unit of IDEX Corporation
Cedar Falls, IA 50613
U.S.A.

THIS DRAWING IS THE PROPERTY OF
VIKING PUMP, INC. AND IS PROPRIETARY
IN GENERAL AND DETAIL. IT SHALL NOT BE
COPIED OR ITS CONTENTS REVEALED TO
OUTSIDE PARTIES WITHOUT THE WRITTEN
CONSENT OF VIKING PUMP, INC.

VIKING 'B' SIZE REDUCER WITH FOOT BRACKET

SIZE DWG. NO. SHEET 2 OF 3 REV
C 3-551-000-00B-00 **C.0**



NOTES:
1. SEE OTHER SHEETS FOR MORE BRACKET OPTIONS

USE AND RELATED INFORMATION

UNLESS OTHERWISE SPECIFIED
DIMENSIONS ARE IN **INCHES**.
INTERPRET DIM AND TOLERANCES PER VIKING PUMP ES-47
BREAK EDGES .005-.015 RADIUS OR CHAMFER
.XX ±.02 .XXX ±.005 ANGLES ±1°

ALL FINISHED SURFACES $\sqrt{250}$ (AA .030 CUTOFF)
ACCEPTABILITY OF SCREW THREADS SHALL BE
DETERMINED BASED ON SYSTEM 21 ASME B1.3



MATERIAL:
SEE PARTS FOR MATERIAL SPEC

WAS:

STATE	Released	11/01/2016
DRAWN	ANHansen	10/28/2016
CHECKED	BAM	10/31/2016
PROJECT	3D	WEIGHT: 36.14LBS
SCALE: 1:2		
CASTING NUMBER		

VIKING PUMP

VIKING PUMP, INC.
A Unit of IDEX Corporation
Cedar Falls, IA 50613
U.S.A.

THIS DRAWING IS THE PROPERTY OF
VIKING PUMP, INC. AND IS PROPRIETARY
IN GENERAL AND DETAIL. IT SHALL NOT BE
COPIED OR ITS CONTENTS REVEALED TO
OUTSIDE PARTIES WITHOUT THE WRITTEN
CONSENT OF VIKING PUMP, INC.

VIKING 'B' SIZE REDUCER WITH FOOT BRACKET

SIZE	DWG. NO.	SHEET 3 OF 3	REV
C	3-551-000-00B-00		C.0