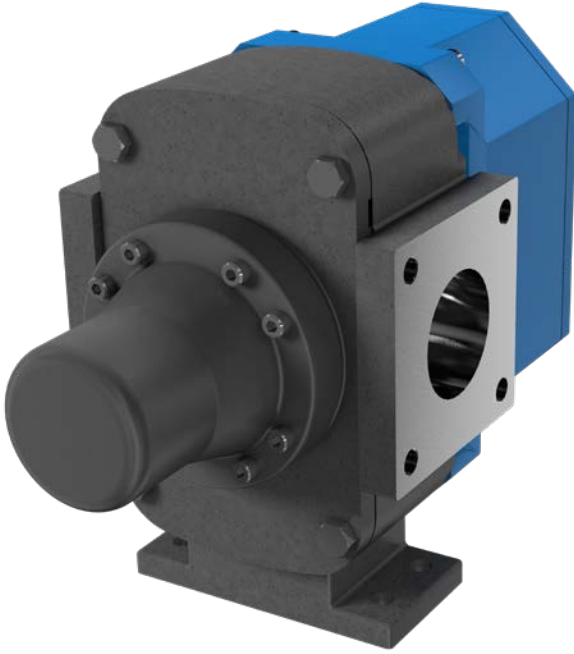




## RTPe SERIES™

ROTARY LOBE PUMP | HYGIENIC PRODUCT LINE



## FEATURES & BENEFITS

### CLEANABILITY

- ▮ The simple design behind the rotor makes strip cleaning easy and fast
- ▮ Choose the cleaning process that fits your needs: COP (Clean Out of Place) or CIP (Clean In Place)

### EASE OF MAINTENANCE

- ▮ Innovative front loading seal design enables quick inspection and easy servicing
- ▮ Sealed gearcase with long-life lubrication eliminates oil inspection and filling
- ▮ Easy to service design requires no special tools for disassembly and eliminates need for end clearance adjustments

### PERFORMANCE

- ▮ Wide range of chemical compatibility
- ▮ Efficiently handles both low and high viscosity liquids with improved pressure capabilities for faster loading and unloading
- ▮ Excellent displacement/weight ratios, which means more in the tank and less in the cabinet (1 l/rev. / 0.264 USG/rev.)
- ▮ Precision helical gears, rotors and shaft design, with optimized bearing position, minimize overhung load – extending seal & bearing life

## THE “ESSENTIAL” COMPONENT IN YOUR CHEMICAL TANKER SYSTEM

For too long, cast iron pumps have compromised the integrity of chemicals carried in stainless steel road tankers. Designed specifically for the chemical transport industry, the RTPe stainless steel pump delivers that essential missing component. Better yet, it provides a cost-effective solution to this problem, while still outperforming the competition in both speed and reliability.

Based on the industry-leading hygienic RTP, the RTPe incorporates all of the features your chemical tanker needs, while eliminating those that it does not.

Protect your investment and make your chemical transport business even stronger. The RTPe is the essential component to complete your chemical tanker system.



**CAPACITY**  
to 264 GPM  
(60 m<sup>3</sup>/h)



**PRESSURE**  
to 145 PSI  
(10 BAR)



**VISCOSITY**  
to 910,000 SSU  
(200,000 cSt)



**TEMPERATURE**  
to +230°F  
(+110°C)

## PORTING

- ASA150 flange bolting pattern
- Other port options available

## SEALING

- Mechanical seal
- Dry-run capable composite O-ring seals
- FFKM/PTFE or FKM elastomers

## GEAR BOX

- Ingress protected and sealed maintenance-free gearbox
- Low weight

## ROTOR & CASING OPTIONS

- 316L stainless steel wet end construction

## MOUNTING

- SAE-A 2 or 4 bolt hydraulic drive
- Drop-in foot and pipework to common cast iron alternatives

## OPTIONS

- Ultra-compact bi-directional internal relief valve

## TYPICAL APPLICATIONS

- Caustics
- Fertilizers
- Pesticides
- Corrosives
- Herbicides
- DEF

## MAINTENANCE KITS

- Everything you need in one place
- Increase uptime
- Seal, bearing and elastomer kits available
- Reduce frequency of repairs
- Save time and money
- Increase service life
- Kits include exploded diagram and parts list

# VIKING PUMP®

**VIKING PUMP, INC.**  
 A Unit of IDEX Corporation  
 406 State Street  
 Cedar Falls, Iowa 50613 U.S.A.  
[vikingpump.com](http://vikingpump.com)

GLOBAL LEADER IN POSITIVE DISPLACEMENT PUMPING SOLUTIONS: Cedar Falls, Iowa, USA | Windsor, Ontario, Canada | Shannon, Ireland | Eastbourne, United Kingdom

WHY CHOOSE THE RTPe?				
Your Needs	RTPe	RTP	Competitor Stainless	Competitor Cast Iron
All 316L Stainless Steel Wet End	✓	✓	✓	✗
Low Cost	✓	✗	✗	✓
Dry-Run Capable Seals	✓	✓	✗	✗
Bi-Directional Pump as Standard	✓	✓	✓	✗
Ultra-Compact Bi-Directional Relief Valve	✓	✗	✗	✗
Designed Specifically for Tank Truck Trailers	✓	✓	✓	✗
Speeds to 1000 rpm	✓	✓	✗	✗
Ingress Protected & Sealed Maintenance-Free Gearbox	✓	✓	✗	✗
Solids Handling	✓	✓	✗	✗
Zero Product Contamination from Rotors	✓	✓	✓	✗
Easy Mount Adapter Plate Available	✓	✗	✗	✗

✓ Yes    ✗ No/Not Ideal or Limitations

\* consult Representative for details

**CONTACT YOUR STOCKING DISTRIBUTOR TODAY**

**IDEX**