



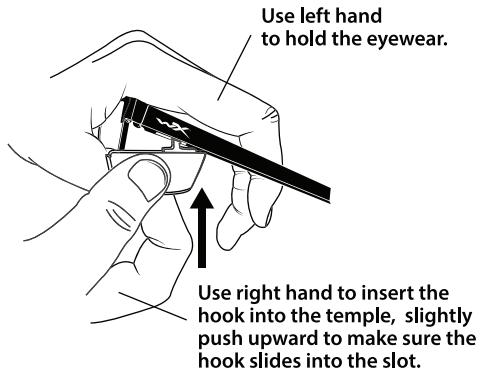
WORKSIGHT™ COMBO

REMOVABLE SIDE SHIELD INSTRUCTIONS

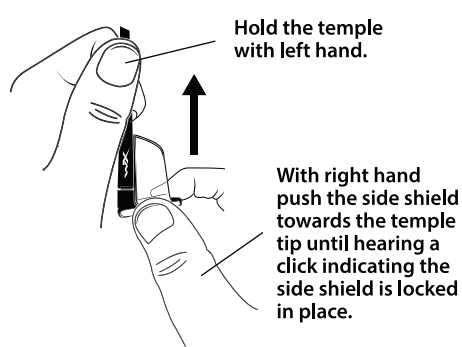
COPYRIGHT © 2019 WILEY X, INC. ALL RIGHTS RESERVED.

WILEY X, WX, BLACK OPS, logos, taglines and product names are trademarks or registered trademarks (marcas registradas) of Wiley X, Inc. in the U.S. and other countries. Logos © 2007-2019 Wiley X, Inc. All rights reserved.

ASSEMBLY: 1



ASSEMBLY: 2



MAINTENANCE: Wiley X lenses are specially coated to offer superior scratch resistance. Please follow below instructions to prolong the life of your lenses and keep them performing at their best:

- Clean lenses with water only.
- Do not use solvents or special cleaners.
- Use micro-fiber cleaning cloth provided to gently wipe clean.
- Never use paper products to clean and avoid wiping lens surface when dry and/or dirty as this may potentially scratch the lens.

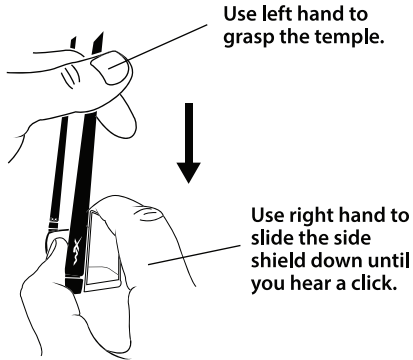
WARNING: Wiley X brand eyewear is tested tough. However, impact resistant eyewear is not unbreakable and does not provide unlimited eye protection under all circumstances and conditions. Misused, abused, scratched and/or damaged eyewear can reduce impact protection and void your limited warranty. Dirty and/or wet eyewear can impair vision and reduce safety resulting in personal injury and/or property damage. Do not use solvents or abrasives as it could scratch or damage the product reducing its effectiveness. Store your Wiley X eyewear in the protective case provided to prolong the life of the lenses. Take all appropriate precautions when wearing your Wiley X eyewear during hazardous and/or dangerous activities and conditions. Wiley X, Inc. is not responsible for personal injury, property damage or losses incurred while using Wiley X brand products.



WILEY X INC: 1.800.776.7842 // 925.243.9810 // WILEYX.COM
7800 PATTERSON PASS ROAD, LIVERMORE CA 94550 USA
WILEY X EMEA,LLC +45 96 93 00 45 // WILEYX.EU
SØNDERGADE 8-10 7570 VEMB DENMARK

WSCMBCARD REV2

REMOVAL: 1



REMOVAL: 2

