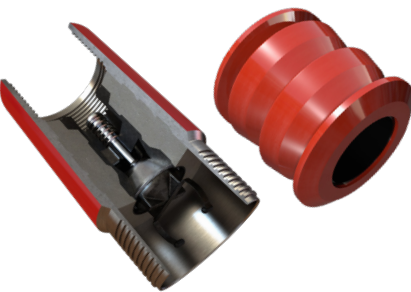


Head-to-Shoe Solutions for Unconventionals

WE START WITH RELIABILITY

The Halliburton casing equipment portfolio goes through rigorous testing, in some cases above and beyond API specifications, to provide reliable performance of each solution.

Float Equipment



Fully configurable portfolio of float collars, shoes, and plugs

- » Over 1.5 million successful SuperSeal II® float collar runs
- » Trophy Seal® float collars for economic solutions in less challenging conditions
- » IsoLatch™ integrated system for shortened shoe tracks and reliable protection of completions equipment

Stage Cementing



Proven tool portfolio for a full range of multi-stage cementing applications

- » Plug or hydraulic options available up to 275°F (135°C), 13 bbl/min, 4.9-in. flow area (specifications vary by tool)
- » Every stage tool pressure and leak tested prior to shipment
- » Hybrid materials for optimal reliability and drillability

Centralizers



RED-X™ centralizers for proper standoff and efficient casing runs

- » Classic, single-piece, and solid body options
- » Premium quality and durability
- » Drag reduction features
- » Up to 111 ft/hr faster casing runs vs. the competition in certain scenarios

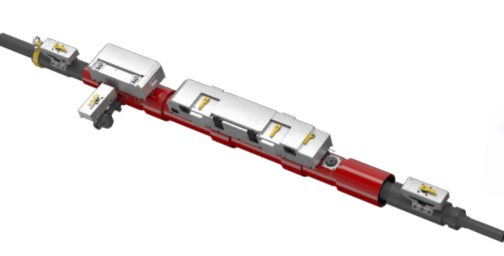
Casing Floatation



Portfolio of casing floatation devices for faster casing runs to bottom

- » Multiple casing sizes and premium thread options
- » Glass disc options available, no debris catcher required
- » Options available for compatibility with completion tool portfolios

Surface Circulating Equipment



Industry-leading cement heads and plug containers for improved operations and cement bonds

- » Two- or three-chamber cement head designs with rotation/reciprocation
- » Enhanced wireless capabilities available for on-the-fly plug launching and improved HSE
- » On-site plug loading and verification on select models

Specialty Equipment



Selection of vibrating casing running tools or Bottomhole Kickoff Assemblies

- » Casing XRV™ tool compatible with completions equipment for faster casing runs to bottom
- » Bottomhole Kickoff Assembly (BHKA) with disconnect at top of cement for competent and reliable plug placement with minimal contamination risk

WE DELIVER EFFICIENCY

Our approach to product design and delivery helps provide a full set of solutions that can be customized to your specific well needs, so your projects run on time and on budget.

FOLD

HALLIBURTON

Sales of Halliburton products and services will be in accord solely with the terms and conditions contained in the contract between Halliburton and the customer that is applicable to the sale.

H013472
04/20 © 2020 Halliburton. All Rights Reserved.

halliburton.com

FOLD



Commander™ Full Bore Cement Head

HWE® (High-Wiping Efficiency) Wiper Plugs

Casing Floatation Devices

RED-X™ Centralizers

Super Seal II® Float Equipment

Unconventionals
HEAD-TO-SHOE SOLUTIONS

HALLIBURTON | Cementing

100+ YEARS OF OILFIELD CEMENTING LEADERSHIP

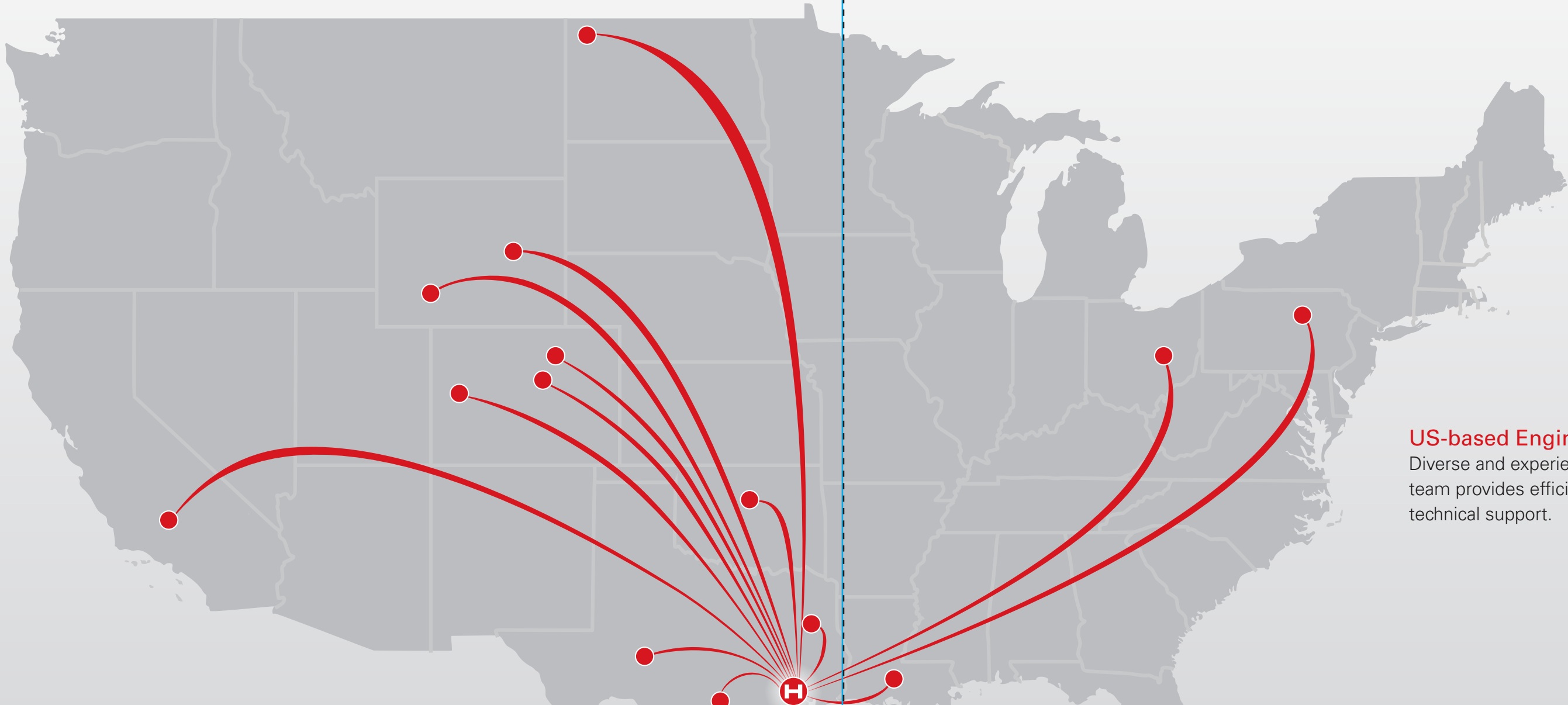
Nobody does Oilfield Cementing better than Halliburton. You can trust the market leader in cementing and casing equipment to deliver dependable barriers.

3 to 5 DAYS LEAD TIME – CORE PORTFOLIO

Inventory manufactured and deployed to field quickly to replenish core and forecasted float equipment.

Nationwide Distribution Channel

Hub and spoke distribution model, inventory management systems, and stocking strategies keep inventory close to your jobsite and ready for your operations.



Primary Manufacturing

Houston-based ISO-9001 certified manufacturing enables efficient delivery times, quality control, and testing procedures on specialty equipment.

Selective Supplier Network

A rigorous selection process, regular audits, and quality control checks help us deliver the Halliburton standard of quality and reliability.

US-based Engineering

Diverse and experienced engineering team provides efficient and insightful technical support.

