

Obex™ Casing Annulus Packers

EFFECTIVE AND RELIABLE ZONAL ISOLATION

OVERVIEW

Incorporating mechanical barriers in well construction is a validated method for improved zonal isolation and to mitigate sustained casing pressure (SCP) that leads to fugitive emissions. No mechanical barrier has proven more effective than compression-set casing annulus packers. The Halliburton Obex™ family of compression-set packers can address a range of wellbore conditions, offering varying levels of support, to ensure well integrity and maximize production. Each Obex packer is designed to provide a mechanical barrier that can increase wellbore performance and decrease capital expenses by providing effective zonal isolation that can eliminate the need for future remediation.

ENGINEERED FOR PERFORMANCE

Compression-set and not inflated, the Obex packer family uses a unique element seal contained by back up shoes to eliminate an extrusion gap inside the casing which better supports pressure above and below the packer. Pump pressure applied from the surface sets the packer seals, compressing them into the outer casing. An internal latching mechanism stores the packer compression forces by locking movement and preventing the seals from relaxing. This feature maintains the energized seal for the life of the well and allows the Obex packers to meet or exceed casing ratings because there are no exposed setting chambers or yielded material once the packer is set.

EXCEPTIONAL RELIABILITY

Designed with a drive-pin setting system, the Obex casing annulus packers eliminate unreliable rupture discs from the setting operation. This feature eliminates the risk of premature disc rupture, often affected by losses in the well, which traditionally would prevent the packer from fully setting. Additionally, with six dedicated cement ports, the Obex IsoLock packer collar provides improved 360° cement flow, allowing for a more uniform distribution of cement in the annulus to provide a dependable cement barrier.

CHALLENGE-BASED SOLUTIONS

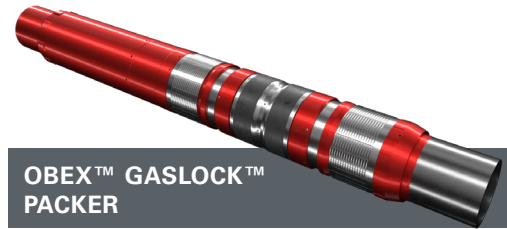
The Obex family of compression-set casing annulus packers address a range of complex wellbore conditions, providing API/ISO validated effective mechanical barriers to prevent sustained casing pressure, reach top of cement (TOC), and maximize production.

For more information, contact your local Halliburton representative or visit us on the web at www.halliburton.com

Sales of Halliburton products and services will be in accord solely with the terms and conditions contained in the contract between Halliburton and the customer that is applicable to the sale.

H014177 04/22 © 2022 Halliburton. All Rights Reserved.

HALLIBURTON



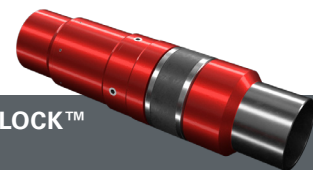
**OBEX™ GASLOCK™
PACKER**

- » V0-rated gas-tight barrier
- » Achieves zonal isolation comparable to premium liner top packers
- » Can support high pressure multiple-stage cement pressures when run in conjunction with the V0-rated ES-II™ HD cementer
- » High strength slips set in all casing grades
- » Tested envelope up to 10,000 psi pressure rating at 300°F (149°C)



**OBEX™ ISOLOCK™
PACKER COLLAR**

- » V3-rated isolation assurance
- » Improved reliability over inflatable and expandable packer options
- » Integral second-stage cementing capability
- » Supports high pressure multiple-stage cement pressures in excess of inflatable packer capabilities
- » Improved drillability saves rig time
- » Tested envelope up to 6,000 psi pressure rating at 200°F (94°C)



**OBEX™ ECOLOCK™
PACKER**

- » Cost-effective and reliable isolation assurance for less challenging environments
- » Capable of supporting multiple-stage cementing (optional integral cementer)
- » Improved reliability over inflatable packer options
- » Rated up to 3,000 psi at 200°F (94°C)