

Wasabi Cloud NAS

Bottomless Hybrid Cloud File Storage

Managing data storage growth is a challenge that almost every organization faces. That's because there is significant cost management associated with on-premises storage. Organizations frequently acquire more storage capacity than they need resulting in overpaying and over provisioning. They must perform data migrations that take time and incur risk. They also must install them, maintain, cool, secure, power, and then decommission the on-premises storage. Each of these processes incurs additional cost, risk, and time to perform.

Wasabi Cloud NAS changes that. Using Cloud NAS, organizations keep the storage features that their on-premises cloud storage offers without ever running out of capacity.

Moving “Cold Data” To The Cloud

Upon its creation, unstructured data always starts as hot. Hot data is active and is usually accessed often by users and their applications. If data hasn't been accessed in the last 90 days, it cools very rapidly and the probability of it being accessed drops dramatically. 75 to 90 percent of unstructured data is cold and consumes primary storage capacity on-premises. With Wasabi Cloud NAS, 80% or more of a corporation's unstructured data, on average, can be off-loaded from on-premises storage to lower-cost Wasabi cloud storage, freeing up capacity for additional data growth. When organizations use Cloud NAS, they can set policies that determine which files automatically move to the cloud. This can be done when on-premises storage capacity hits a specific limit or when files have not been accessed in a certain amount of time: ie. “cold data.” Alternatively, data can be instantly moved to the cloud as soon as it is saved.

Cost Savings

Every terabyte of data removed from existing on-premises storage and the associated backup environment generates real savings by delaying the substantial cost of adding additional primary and secondary storage. This includes not just the cost of the hardware, but also the licensing and maintenance costs, network costs, energy costs, and datacenter costs.

Wasabi Cloud NAS takes the stress out of storage management. It offers organizations the availability, capacity, durability, performance, reliability, and scalability that they want storage to deliver for their data. It simultaneously removes all the hidden and overlooked time and costs associated with managing it.

Features

- › Always have free space available: Cloud NAS creates “bottomless” storage capacity
- › Preserve current operations: No new file system to learn
- › Reduce capital costs: No more periodic equipment upgrades and data migration hassles
- › No floor space required: Takes up zero floor space, no electricity necessary and no need for human maintenance
- › Feel confident: Far more reliable than most local storage:
 - › Protection from ransomware
 - › Restore data from cloud if local drives fail or data is lost
 - › 11 nines of data durability in the Wasabi cloud

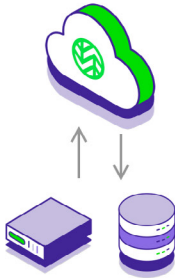
Simple to use. No disruption. Access data as usual

The Wasabi Cloud NAS solution is hands-free and automatic. It requires minimal effort from administrators and has no impact on users and applications. Data migration is performed seamlessly and automatically based on the storage policy you define. During the process, data always remains available while capacity is freed on the primary server. Users and applications still access the off-loaded cold data in the same manner as when it was on-premises; via the same source, same directory, and in the same way—even in the cloud. All data stored in the Wasabi cloud is considered “hot” and is readily available.

How It Works

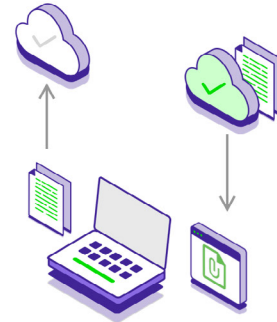
Wasabi Cloud NAS installs on a Microsoft Windows® server in five minutes without rebooting and immediately optimizes your storage and protects your data. There is no client software needed on end-user devices. Files moved to the cloud are replaced with zero-byte stub files in the NTFS file system. These stub files are placeholders that allow applications to function normally, as if the data exists in its original location.

1



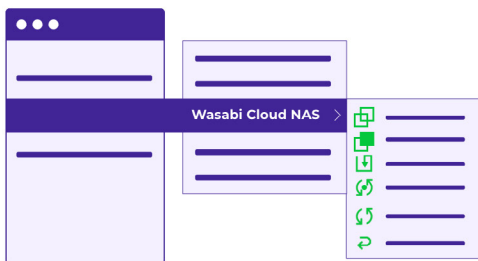
Synchronize or replicate data between local storage & the Wasabi Object Storage platform with ease using the Wasabi Cloud NAS client software.

2



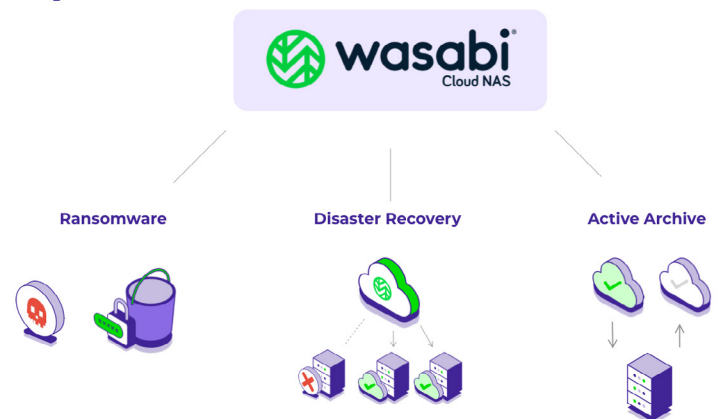
Free up the space using the reclaim space policy at the local storage level and maintain access to data on-demand.

3



Use the Windows Explorer to access Cloud NAS and perform manual operations on the synced source folders, such as replicate, reclaim space, retrieve and import data, synchronize, and undelete.

4



Wasabi Cloud NAS protects your data from threats with immutability at the object level to guard against malicious attacks like **ransomware** or unintended deletions. **Disaster recovery** capabilities for data synced to the cloud keeps data up to date across all servers if there is a hardware failure. Tiering old or rarely used data to Wasabi helps meet compliance and long-term retention goals while reducing the strain on on-prem systems by creating an **active archive** so data remains accessible.

Helps fight ransomware, accidental data loss

Wasabi Cloud NAS can be “immutable,” meaning that the contents cannot be modified or erased. Ransomware can attack local, on-premises files but cannot attack the cloud copies. Nobody can accidentally or maliciously destroy the data that is stored using Cloud NAS and immutable buckets.

Disaster-proof your file storage

If the local, on-premises storage fails, the replacement hardware can be repopulated with file stubs from the cloud within minutes. There is no need to wait for all files to be restored. Users can start accessing their data almost immediately.

Summary

Wasabi Cloud NAS provides organizations the ability to offload cold data from their on-premises servers, but still keep it available and retrievable within milliseconds. Offloading cold data frees up on-premises capacity effectively making it “bottomless.” No client software is needed on end user devices. All files are visible from the primary storage, appearing to reside on-premises regardless of whether they have been offloaded to the cloud. All data in the Wasabi cloud retains its original meta-data properties including creation and access times, ownership, content, protection and security. It is simple to use and easy to understand.

System Requirements

You can install Wasabi Cloud NAS on a computer that meets these minimum system requirements:

- › PC with 64-bit (x64) processor
- › 64-bit Microsoft Windows® 7/Server 2008 R2/Windows® 8/Server 2012/Server 2012 R2/Windows® 10/Server 2016/Server 2019

Important: Microsoft Windows® 7/Server 2008 R2 computers must run at least Service Pack 1 and have the KB976932 and the KB3033929 security updates installed

- › 4 GB of physical RAM at least
- › 60 MB of available hard-disk space for installation

To learn more, visit: <https://wasabi.com/cloud-nas/>