

Wasabi Surveillance Cloud: Source Monitoring Dashboard

What is the Source Monitoring Dashboard?

The Source Monitoring Dashboard is a Wasabi Surveillance Cloud tool that provides a centralized portal view with real-time visibility and status monitoring of data flow from your video surveillance system sources (Network Video Recorders [NVRs] or Video Management Systems [VMS]) to the Wasabi cloud. You can configure email alerts within the portal based on user-defined thresholds for specific aspects of Wasabi Surveillance Cloud performance (offline system, free space, central processing unit [CPU] and memory usage). This dashboard is designed to help IT and security teams ensure reliable video upload and connectivity.

Benefits

- › Real-time visibility and status monitoring of video replication
- › Email alerts for issues with performance and synchronization
- › Risk reduction of data loss and downtime

Why use the Source Monitoring Dashboard?

The Wasabi Surveillance Cloud Source Monitoring Dashboard gives you the peace of mind that your surveillance storage environment is replicating video to Wasabi optimally and without interruption. Receive real-time performance status —of storage utilization, target bandwidth, and event viewer activity.

You can configure alerts via email notification, notifying team members the moment the software goes offline, free space threshold is met, or resource usage spikes—allowing you to take immediate action before performance issues impact video replication. Proactively identifying and resolving potential problems ensures consistent video replication. The result is greater operational efficiency and reduced downtime, providing full confidence in the replication and synchronization of your surveillance video.

How to use the Source Monitoring Dashboard?

The dashboard is designed to monitor critical services on the local server and trigger email alerts when services on the server hosting the Wasabi Surveillance Cloud client exceed predefined thresholds, which might adversely affect replication or synchronization processes. This dashboard must be installed on the same server as the Wasabi Surveillance Cloud client to ensure optimal functionality.

For initial installation instructions, see [“Source Monitoring Dashboard - Installation and Instructions.”](#)

Storage utilization

The **Local Drive** chart provides a comprehensive status of the local drive. It is important to note that the available free space reported includes any drive virtualization options that might have been configured within the Wasabi Surveillance Cloud user interface. When establishing an alarm, please consider using either the percentage or volume relative to the total available space according to the Microsoft® Windows® operating system, rather than solely focusing on the physical disk capacity.

Target Bandwidth

The **Target Bandwidth** shows the amount of data being pushed to (or pulled from) your cloud account in real time.

Event Viewer

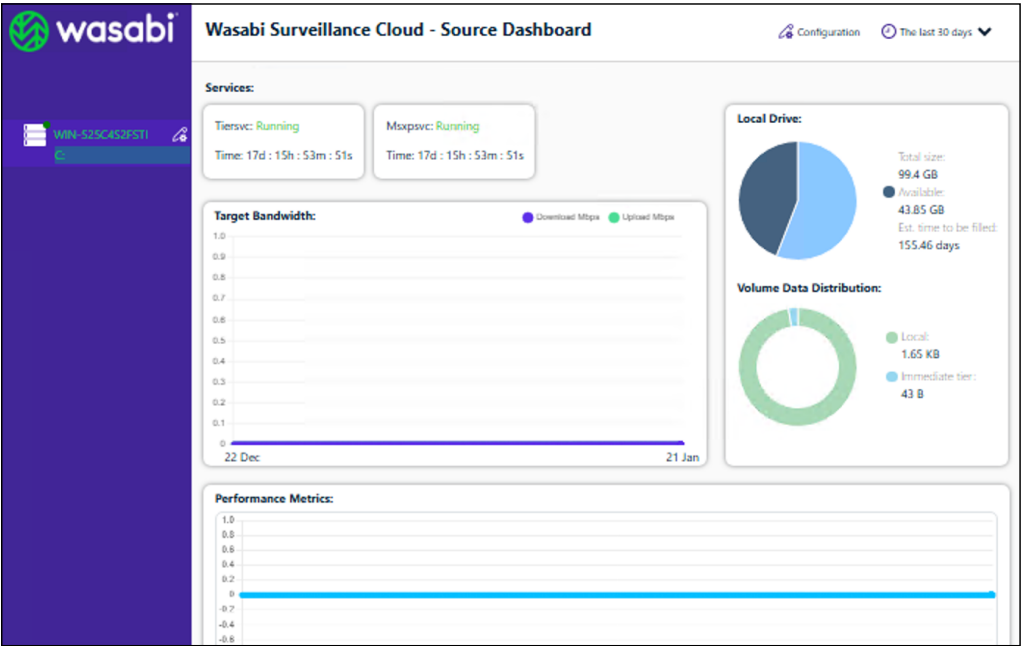
This widget pulls the latest logs recorded in the event viewer on the server where the dashboard and the Wasabi Surveillance Cloud client are running. These logs are recorded by the WSC client software and refreshed periodically. Configuration settings provide an option to specify a keyword of interest and get notified if the event viewer log(s) contains that keyword.

Performance Metrics

All performance metrics are maintained for 30 days. You can view the data for the past 30 days or two days from the drop-down arrow. The scale adapts for each metric. The following key performance indicators and services can be monitored using the dashboard:

- **Tiersvc** service: The main service associated with the Wasabi Surveillance client software. It processes, queues, manages data replication, reclaims space, and archives and sync policies. If this service is down, the Wasabi Surveillance Cloud is entirely inoperable.
- **Msxpsvc** service: This service collects information associated with files location and state, which are then used by the Wasabi Surveillance Cloud plugins. When this service is stopped, users can't see the colored section in the VMS timeline, and the job managers can't tell cameras and timings apart.
- Estimated time to be filled" is a metric calculated by comparing the current data generation rate (disk write) against the outgoing traffic. The leftover free space in the local source is also considered for estimating this metric. If the estimation is under 3 days you should receive an alert.
- The Event Viewer section displays the 1000 latest events logged by the Wasabi Surveillance Cloud client application on the local machine.
- The dashboard refreshes automatically every minute.

You will receive an email alert from wsc-alert@wasabi.com for all alerts you have configured using this dashboard. Email alerts can be set for **Tiersvc**, **Msxpsvc**, **Free Space**, **Memory Usage**, **CPU Usage**, **Media in Queue (Milestone)**, **Upload Speed vs Recording Speed**, and **Keywords for Event Viewer Notifications**.



Configuration

Dashboard IP: 000.000.000.000

Show	Machine Name	License Validity	Serial-Key	Options
<input checked="" type="checkbox"/>	Machine Name	License Valid	XXXX-XXXX-XXXX-XXXX	

Global Notifications Settings

Metric	Enabled	Direction	Warning	Error
Tiersvc	<input type="checkbox"/>	---		
Msxpsvc	<input type="checkbox"/>	---		
Free Space	<input type="checkbox"/>	Below	70 GB	5 GB
Memory Usage	<input type="checkbox"/>	Below	75 %	10 %
CPU Usage	<input type="checkbox"/>	Above	1 %	100 %
Medias in Queue (Milestone only)	<input type="checkbox"/>	Above		50
Upload Speed vs Recording Speed	<input type="checkbox"/>	---		

Keywords for Event Viewer Notifications

Please enter your keywords, separated by semicolons (;).

Email list:

Email 1

Email 2

Save

Cancel