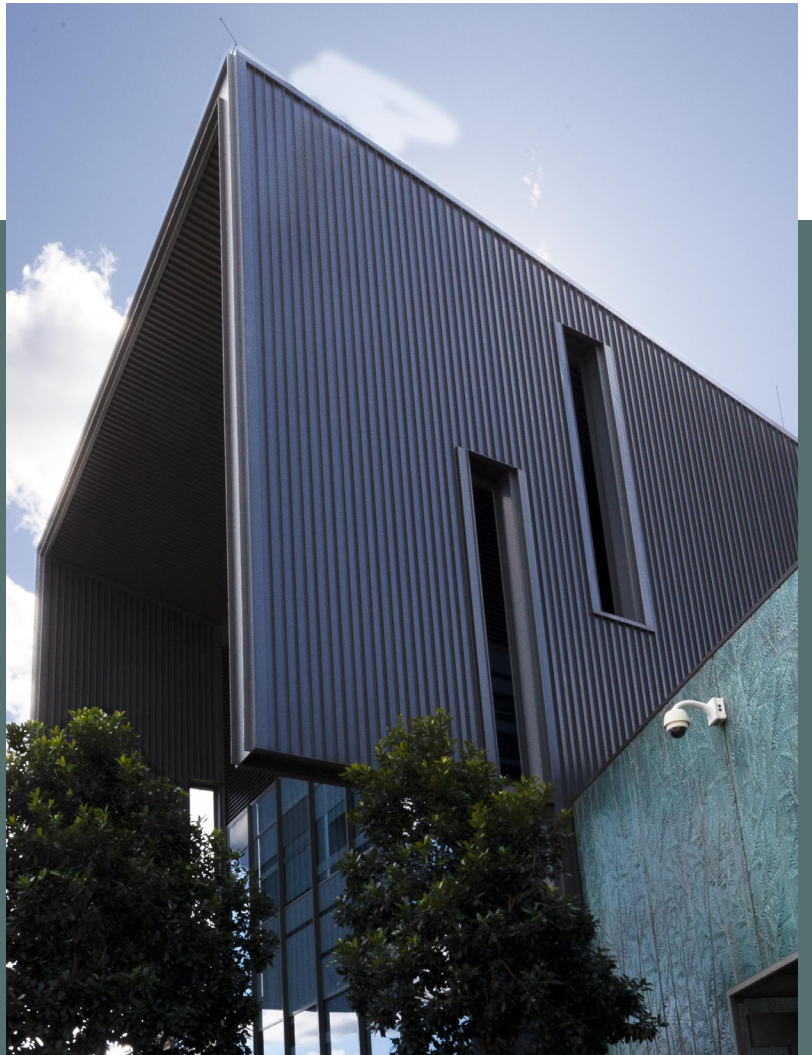


# NEPEAN MENTAL HEALTH HOSPITAL

- KINGSWOOD, NSW, AUSTRALIA

[WWW.NAWKAW.COM](http://WWW.NAWKAW.COM)



**Nawkaw**<sup>®</sup>  
ARCHITECTURAL FINISHES INSPIRED BY ART & SCIENCE



## THE CHALLENGE

Public health infrastructure is a less enthralling subject matter to many compared with the other structures that comprise our built environment. Even so, for staff, faculty, and patients alike, the walls of health facilities contribute to a holistic environment of healing—and their form can shape their function in the minds of many.

This was the fundamental idea behind the conception and design of the Nepean Mental Health Centre on the campus of Nepean Hospital just outside of Sydney, Australia. Public health officials collaborated with global architecture studio Woods Bagot to create a new structure to better serve the needs of a growing and aging public.

Their vision was of a therapeutic healthcare unit integrated into the local community and health precinct, visually representing a new and non-institutional approach to mental healthcare. To fully realize their concept, Woods Bagot needed experts in concrete color and design to transform perhaps the most important element of their design: precast concrete panels textured with bamboo growth and finished in a striking metallic hue.

These panels would marry the beauty of nature with the quality of care found within the finished structure.

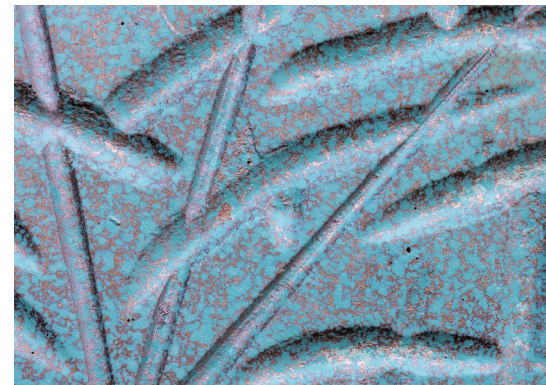


# THE SOLUTION

To meet the needs of Woods Bagot, project managers with the Australian and New South Wales governments, and the surrounding community, Nawkaw Australia developed a complex finish for the textured precast panels to realize the aesthetic vision intended for the project entirely.

First, collaborating with designers to create and approve a sample, expert stain technicians were able to create a 'Nepean green' hue. A gold-bronze base was topped with a non-metallic weathered green acrylic stain solution to create a patina-like final look. As with all projects, Nawkaw Australia technicians created the finish using sustainable acrylic stain, designed to never chip, peel, or fade due to the strong penetrative bonds formed with the underlying substrate.

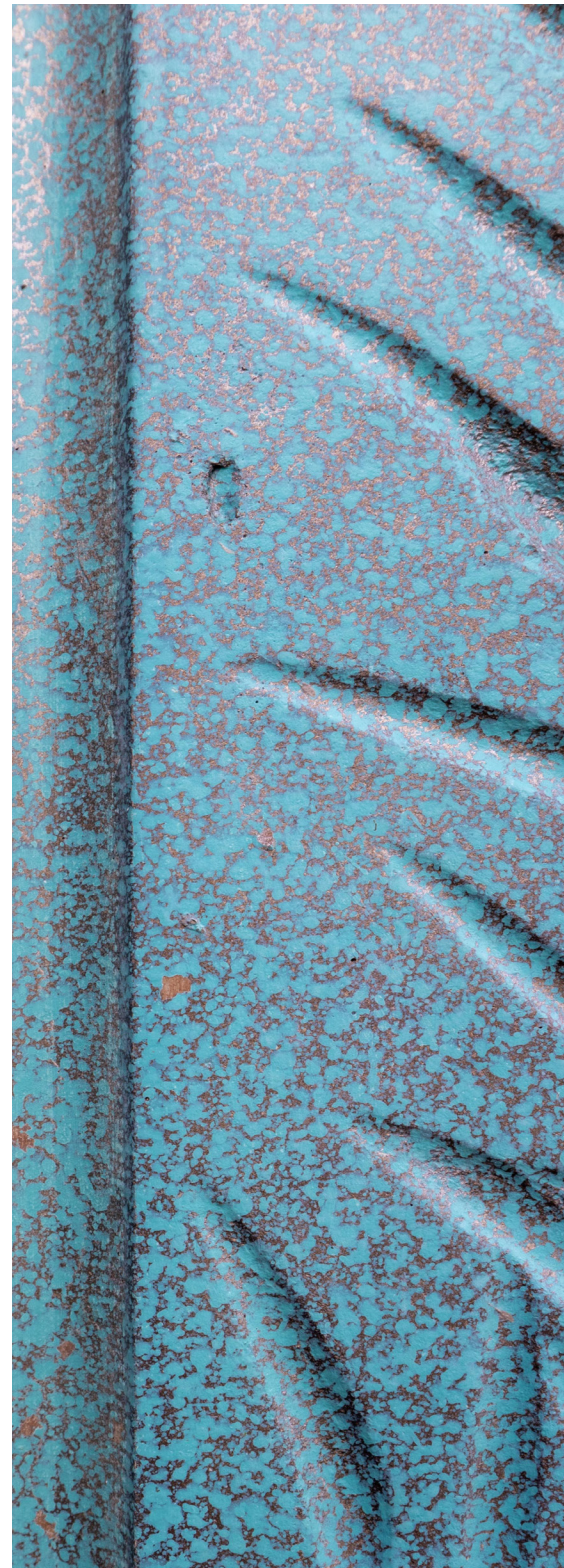
Soon after Nawkaw Australia finished work on the project, the Nepean Mental Health Centre officially opened on schedule in 2014. Today, nearly a decade since Nawkaw Australia's application, the facility is striking against the other structures that populate the health campus. The resiliency of color and material choices on the project mirror the strength of care found within its walls, realizing the exact visual impact Woods Bagot first envisioned all those years ago.



**WWW.NAWKAW.COM**



Nepean Mental Health Hospital - Kingswood, NSW, Australia





Nepean Mental Health Hospital - Kingswood, NSW, Australia





170 WHITETAIL WAY  
BOGART, GA 30622

USA: 1-866-462-9529  
CAN: 1-888-896-6058

**WWW.NAWKAW.COM**