

Nawkaw Metallics

PORTFOLIO

Let Nawkaw help your unique vision shine through beautiful and durable metallic finishes!

WWW.NAWKAW.COM



A Premier Color Product, Providing Lasting Shine

NawTone-K Metallic

NawTone-K Metallic is a mineral stain with the power to embody metal finishes in a stain! This product uses silicate as a binding agent to form a permanent chemical bond with substrates. The stain is made with the highest quality metallic pigments, ensuring a beautiful look with a lack of tarnishing and the expensive price tag that true metal brings. NawTone-K Metallic creates a look that captivates the eye of the observer.

What projects is this best for? NawTone-K Metallic is a superior choice for new construction, renovation, restoration, and preservation, from decorative applications to complete color changes.

Nawkaw's metallic stains penetrate the substrate instead of sitting on top of the surface. This creates a long-lasting effect on concrete and other exterior surfaces, giving a faux metal finish to your building or structure. Why use regular color when your building or structure can stand out from brilliant effects and textures?

WWW.NAWKAW.COM

Pentridge Apartments

Location: 1 Champ Street, Coburg, Victoria, Australia

Architect: PRO-ARK

Builder: Construction Engineering.

Precast concrete panels in leaf effect form liner colored with our products, imitating weathered copper. Completed 2017.

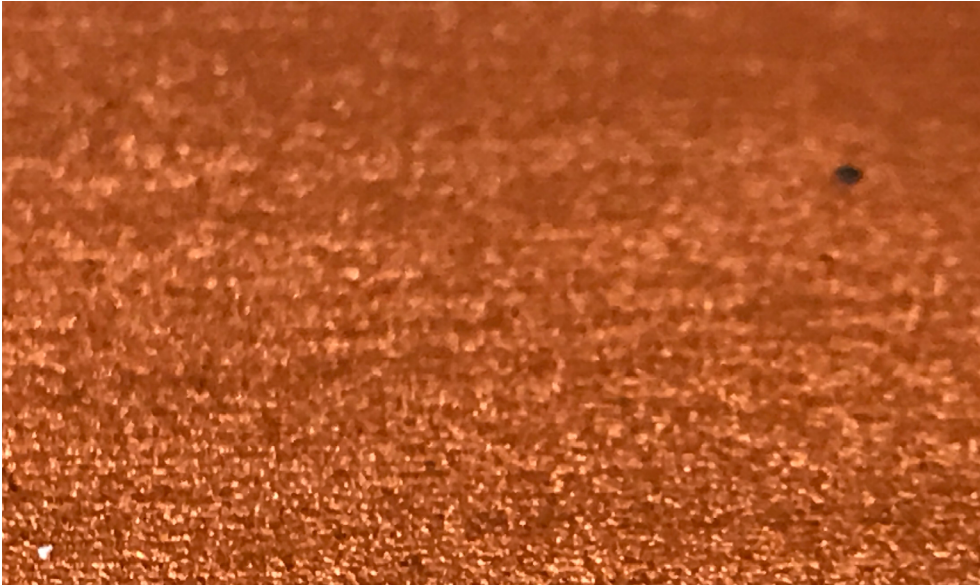
WWW.NAWKAW.COM





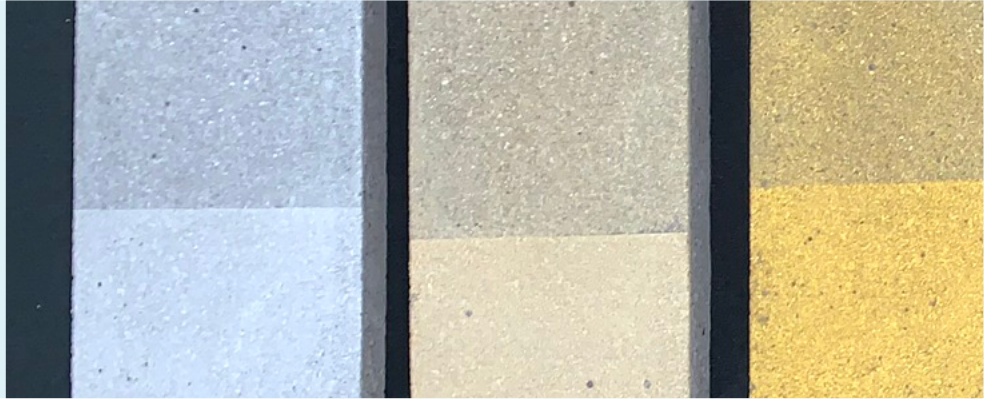
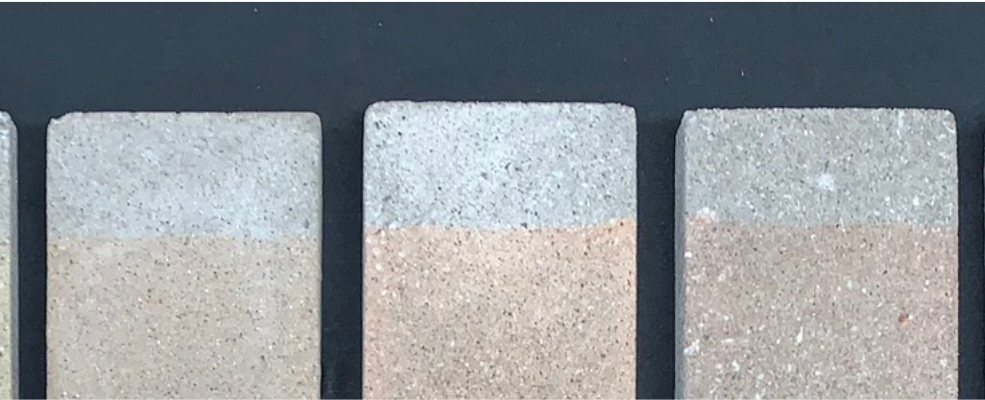
Location: Berkeley Street, Carlton, Victoria, Australia

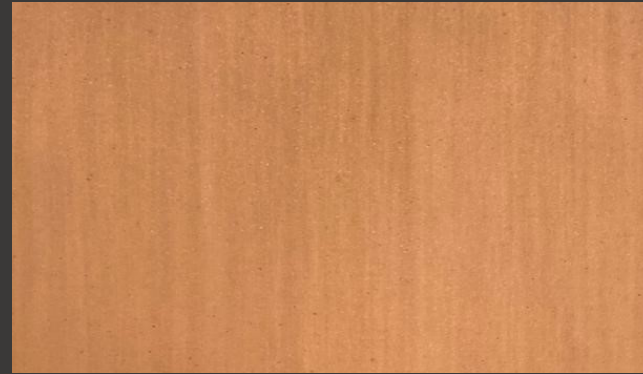
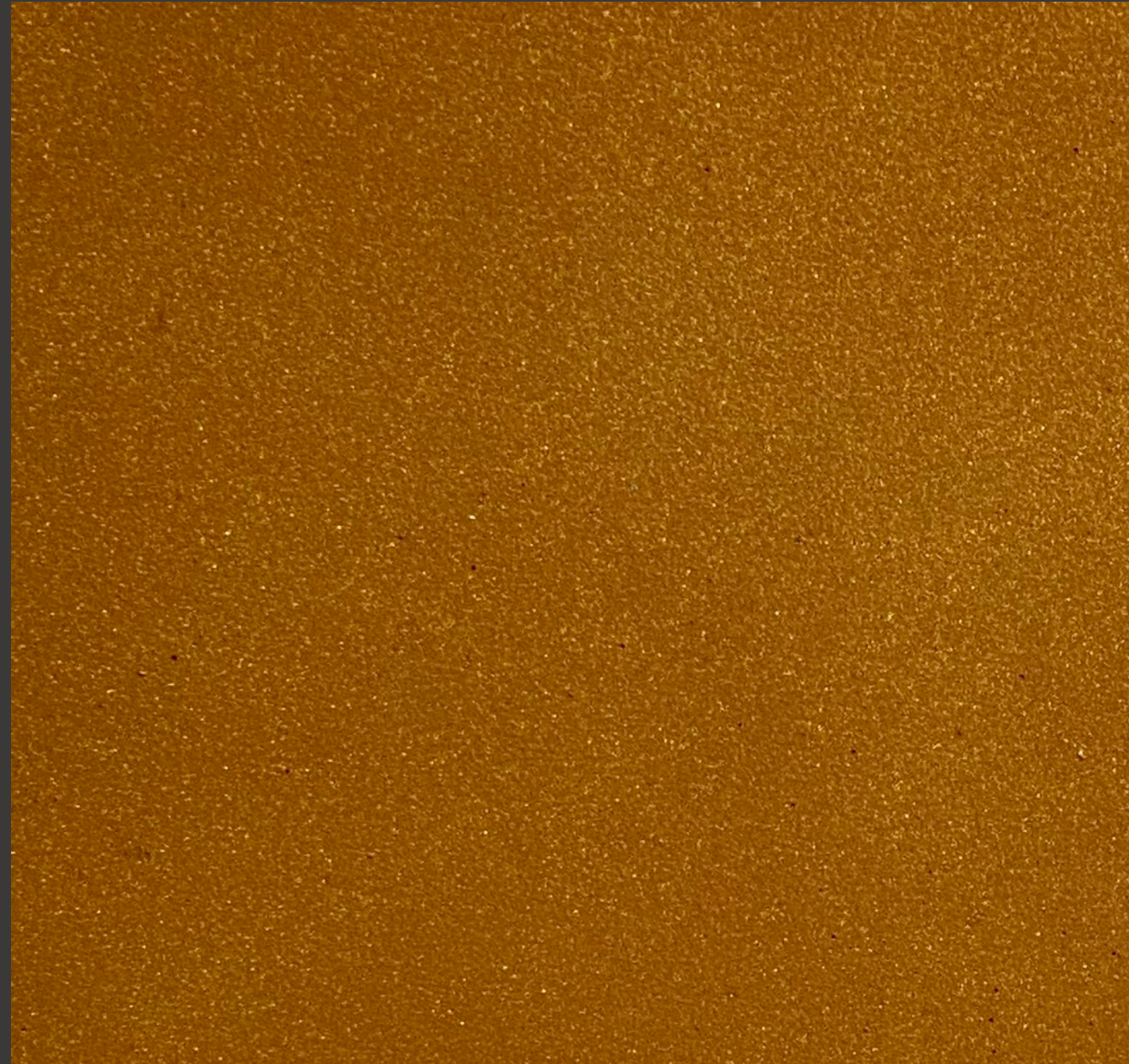




METALLIC CONCRETE SAMPLES IN VARIOUS COLORS







METALLIC SAMPLES WITH COPPER AND GOLD FINISHES

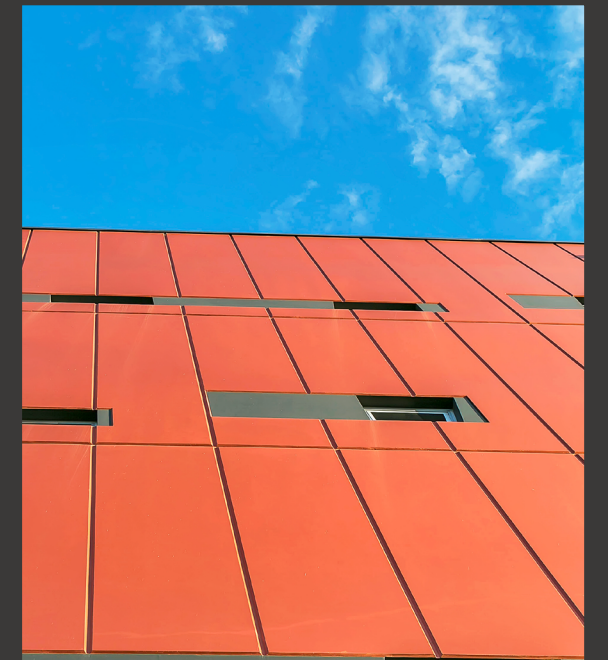


Prospect Apartments

Location: 210 Churchill Rd Kilburn,
South Australia, Australia

Architect: Loucas Zahos Architects
Builder: AGC Projects

**Red metallic effect on grey precast
walling elements. Completed 2016.**





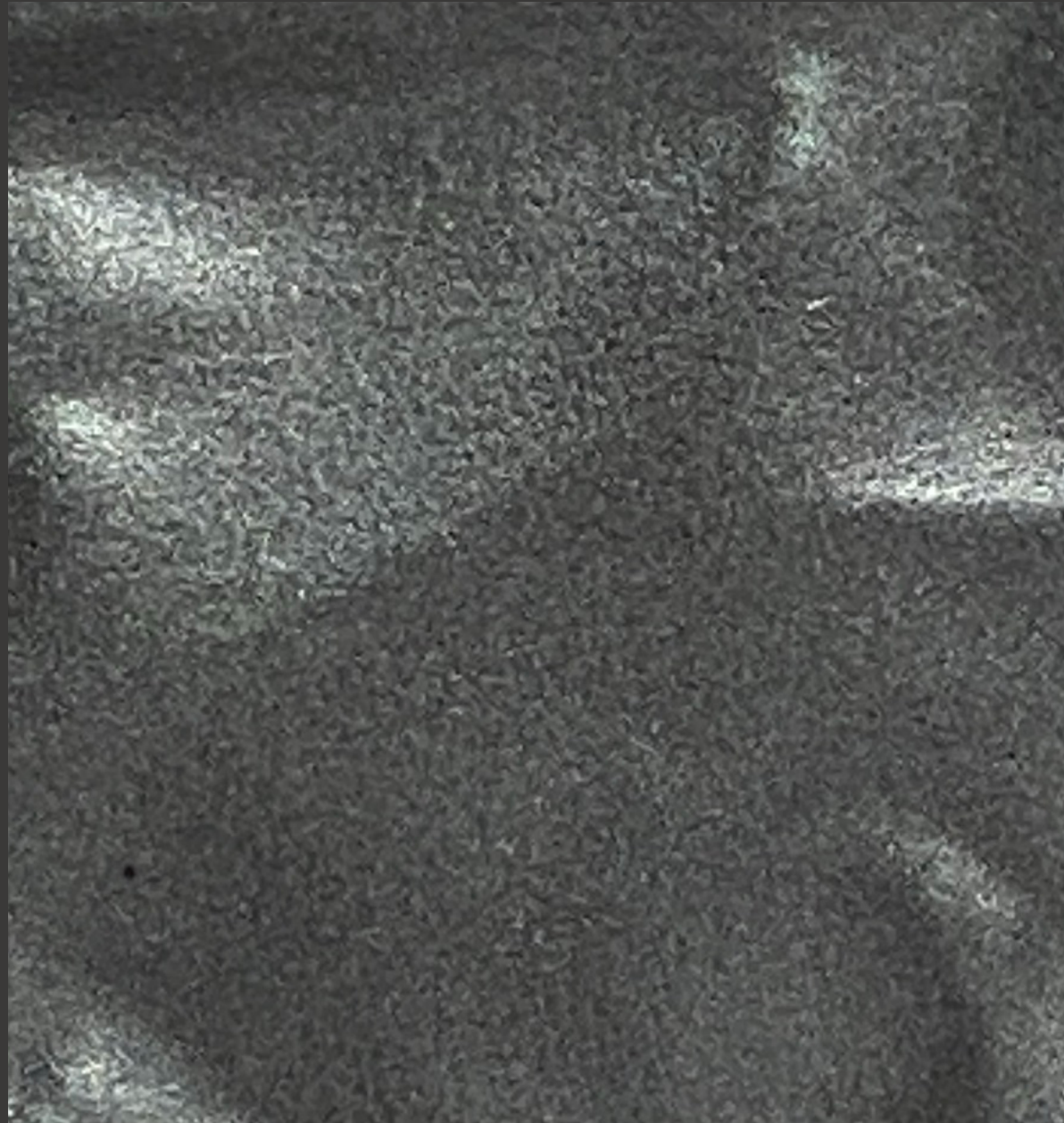
Wilmers Road Pump Station

Location: Wilmers Rd, Hornby, Christchurch, New Zealand

Nawkaw colored grey form lined concrete elements to create a rusted metallic effect and translucent accents. Completed 2012



Location: Derby Street, Penrith, New South Wales, Australia

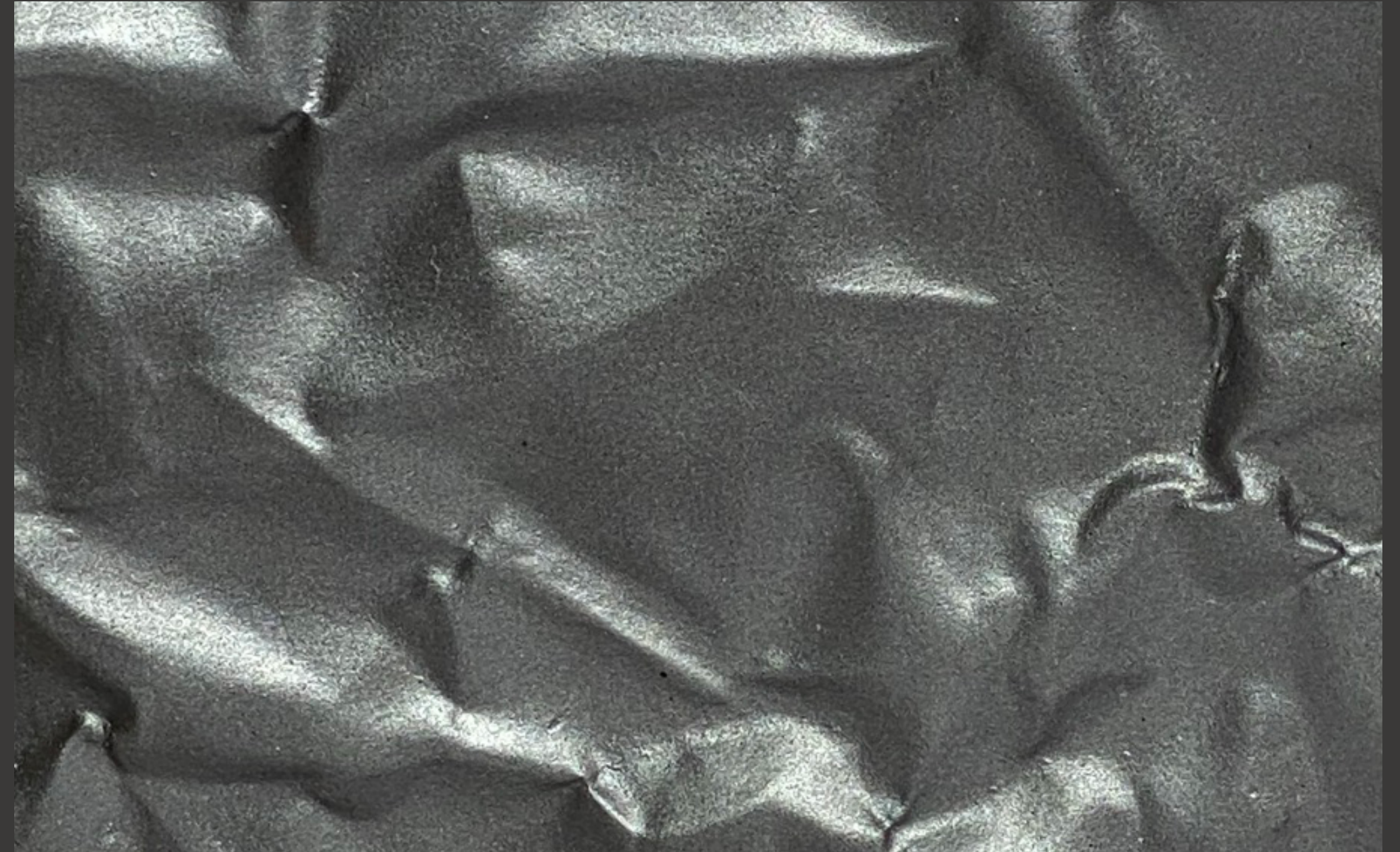



Create Faux Metal Finishes from Stain

Besides providing an unforgettable shine, NawTone-K Metallic can be manipulated with the substrate to mimic real metal. Unique patterns and textures can be produced to create a variety of different metals ranging from patterned steel to weathered copper.

Precast concrete with NawTone-K Metallic can have an especially fantastic effect by creating more depth and detailing to your building or structure's exterior!

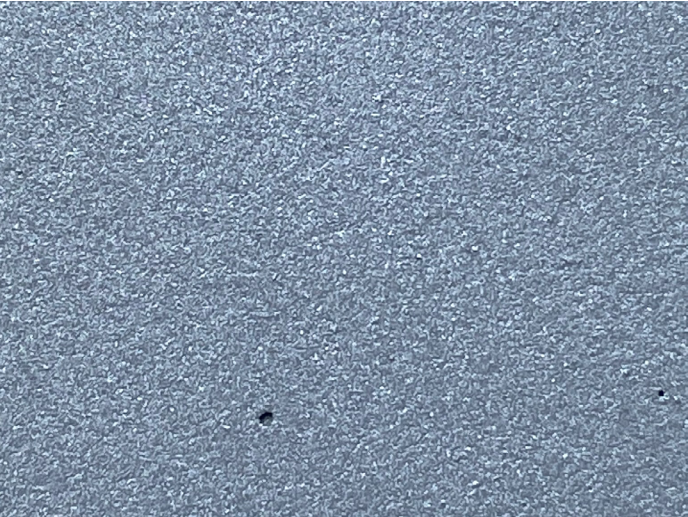
Why use expensive and tarnishable metal when stain can achieve the look without the negative attributes that metal can have?



NawTone-K Metallic has a plethora of qualities that make it superior compared to other finishes.

At Nawkaw, we aspire to create the best products, not just on the surface but in its qualities too. This includes one of the company’s pinnacle values: sustainability. Nawkaw aims to contribute to a better quality of community and environment. An imperative part of this means to produce goods that don’t harm the environment.

NawTone-K Metallic is UV & weather resistant, lightfast, penetrating, aspiratory, durable, odorless, mold & mildew resistant, and environmentally friendly. These characteristics ensure and prove the quality of our metallic products!



Nawkaw

Nawkaw®

ARCHITECTURAL FINISHES INSPIRED BY ART & SCIENCE

WWW.NAWKAW.COM

