



SAFETY TRAINING OFFERINGS



PINNACOL
ASSURANCE

We enable a revolution in caring through innovative risk intelligence that empowers our customers to do their best work every day.



PINNACOL ASSURANCE IS COLORADO'S LARGEST WORKERS' COMPENSATION INSURANCE CARRIER. WE PROVIDE COVERAGE TO NEARLY ONE MILLION WORKERS WHILE SAVING CUSTOMERS MONEY AND CARING FOR COLORADO."

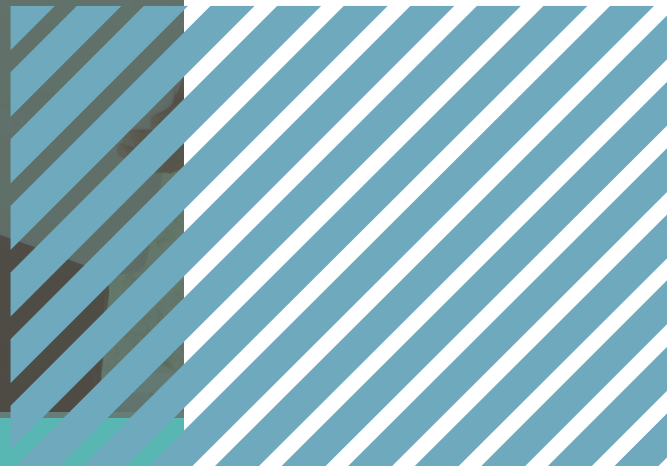
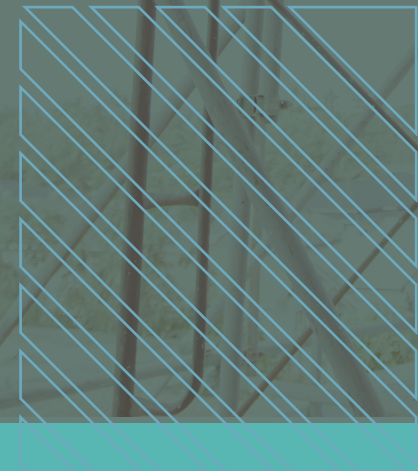


TABLE OF CONTENTS

OUR SERVICES	4
FUNDAMENTALS OF SAFETY TRAINING	6
BLOODBORNE PATHOGENS	8
CONFINED SPACE AWARENESS BASICS	8
CRANE SAFETY FOR CONSTRUCTION	8
EFFECTIVE STRATEGIES FOR MULTIGENERATIONAL TEAMS	8
ELECTRICAL SAFETY	8
FALL PROTECTION ESSENTIALS	8
FIRE PROTECTION AND EMERGENCY ACTION PLANS	9
HAND AND POWER TOOL SAFETY	9
HAZARD COMMUNICATION	9
HEALTH HAZARDS AND SAFETY ESSENTIALS	9
INCIDENT INVESTIGATIONS	10
INTRODUCTION TO HUMAN AND ORGANIZATIONAL PERFORMANCE (HOP)	10
INTRODUCTION TO OSHA	10
LEADING WITH C.A.R.E.	10
LOCKOUT TAGOUT ESSENTIALS	10
MANAGING SAFETY AND HEALTH PROGRAMS	10
MANUAL MATERIALS HANDLING	11
OFFICE ERGONOMICS	11
OPTIMIZING PRODUCTIVITY	11
OSHA RECORDKEEPING	12
PERSONAL PROTECTIVE EQUIPMENT ESSENTIALS	12
RESPIRATORY PROTECTION	12
SAFETY THROUGH EFFECTIVE LEADERSHIP	13
SCAFFOLDING BASICS	13
SITUATIONAL AWARENESS	13
STAIRWAYS AND LADDERS	14
STRUCK-BY HAZARDS	14
TRENCHING AND EXCAVATION BASICS	15
WALKING WORKING SURFACES	14
ADDITIONAL SERVICES	16
ADVANCED SAFETY TRAINING	17
COMPETENT PERSON AWARENESS	19
CONFINED SPACE AWARENESS	20
FALL PROTECTION	18
FIRST AID CPR	20
OSHA AUTHORIZED TRAINING	21
TRENCHING AND EXCAVATION	20
MEET THE INSTRUCTORS	22



We strive to make Colorado's workplaces better and we have the knowledge and drive to do just that. When we achieve our vision, our customers have fewer bad days; when they do have a bad day, they have a partner ready to help them get back to business. That's our business."



HOW WE APPROACH SAFETY

Each customer is different, and that includes how they manage their safety program. We work with our customers to tailor our consultations to meet their needs. We have expanded our services from just loss control and regulatory compliance to also include exploring the complexities of everyday work with our customers to help them increase resilience and/or reduce organizational risk, regardless of where they are in their safety journey. Based on where the customer is in their safety journey, we will make appropriate recommendations when we offer our services.



WE PROVIDE UNMATCHED EXPERTISE IN DESIGNING AND IMPLEMENTING SAFETY AND RISK INTELLIGENCE SOLUTIONS FOR OUR CUSTOMERS BECAUSE :

1

We take the time to understand their operational needs in balance with their tolerance for risk.

2

We identify threats and provide creative solutions.

3

We aggregate industry intelligence to educate and empower our customers.

4

We forge partnerships to capitalize on untapped opportunities.

5

We provide service that anticipates our customers' needs.

WHAT ARE THE FUNDAMENTALS OF SAFETY?

Pinnacol's Safety Services team now offers multiple learning opportunities to better serve our customers. The Fundamentals of Safety Training courses focus on topics that are commonly required by OSHA or essential to workplace safety. Conducted in two hours or less, these classroom style courses allow us to partner with your team along your safety journey.

TRAINING OFFERINGS	INDUSTRY	DURATION	LANGUAGE*
BLOODBORNE PATHOGENS	GENERAL	30 MINUTES	EN/ES
CONFINED SPACE AWARENESS BASICS	CONSTRUCTION	2 HOURS	ENG/ES
CRANE SAFETY FOR CONSTRUCTION	CONSTRUCTION	1 HOUR	EN/ES
EFFECTIVE STRATEGIES FOR MULTIGENERATIONAL TEAMS	LEADERSHIP	1 HOUR	ENGLISH
ELECTRICAL SAFETY	C/GI	1 HOUR	EN/ES
FALL PROTECTION ESSENTIALS	CONSTRUCTION	1.5 HOURS	EN/ES
FIRE PROTECTION AND EMERGENCY ACTION PLANS	GENERAL	1 HOUR	EN/ES
HAND AND POWER TOOL SAFETY	C/GI	30 MINUTES	EN/ES
HAZARD COMMUNICATION	GENERAL	1 HOUR	EN/ES
HEALTH HAZARDS AND SAFETY ESSENTIALS	C/GI	45 MINUTES	EN/ES
INCIDENT INVESTIGATIONS	LEADERSHIP	30 MINUTES	EN/ES
INTRODUCTION TO HOP	LEADERSHIP	30 MINUTES	ENGLISH
INTRODUCTION TO OSHA	C/GI	1 HOUR	EN/ES
LEADING WITH C.A.R.E	LEADERSHIP	1 HOUR	ENGLISH
LOCKOUT TAGOUT ESSENTIALS	GENERAL	2 HOURS	ENGLISH

*Language: "EN/ES" denotes that training is available in English and Spanish.

C: Construction

GI: General Industry

L: Leadership

FUNDAMENTALS OF SAFETY

While our primary goal is to provide the workplace training essentials, many of our courses will resonate with all organizational levels. Many employers utilize these training sessions to meet their ongoing or monthly training requirements. All trainings can be delivered in-person or virtually. Most trainings are offered in both English and Spanish, reference the chart for exact details. Descriptions for each course can be found on the following pages.

TRAINING OFFERINGS	INDUSTRY	DURATION	LANGUAGE*
MANAGING SAFETY AND HEALTH PROGRAMS	LEADERSHIP	1 HOUR	EN/ES
MANUAL MATERIALS HANDLING	C/GI/L	30 MINUTES	EN/ES
OFFICE ERGONOMICS	GENERAL	1 HOUR	ENGLISH
OPTIMIZING PRODUCTIVITY	C/GI/L	30 MINUTES	EN/ES
OSHA RECORDKEEPING	LEADERSHIP	1.5 HOURS	ENGLISH
PERSONAL PROTECTIVE EQUIPMENT ESSENTIALS	C/GI	45 MINUTES	EN/ES
RESPIRATORY PROTECTION	GENERAL	2 HOURS	EN/ES
SAFETY THROUGH EFFECTIVE LEADERSHIP	LEADERSHIP	30 MINUTES	EN/ES
SCAFFOLDING BASICS	CONSTRUCTION	1.5 HOURS	EN/ES
SITUATIONAL AWARENESS	C/GI/L	30 MINUTES	EN/ES
STAIRWAYS AND LADDERS	CONSTRUCTION	30 MINUTES	EN/ES
STRUCK-BY HAZARDS	C/GI	1 HOUR	EN/ES
TRENCHING AND EXCAVATION BASICS	CONSTRUCTION	2 HOURS	EN/ES
WALKING WORKING SURFACES	GENERAL	1 HOUR	EN/ES

For more information regarding the Fundamentals of Safety Training offerings, contact Safety Program Specialist, Ryan Kidd at ryan.kidd@pinnacol.com.



BLOODBORNE PATHOGENS

How can we ensure the safety of our workforce when it comes to potential exposure to bloodborne pathogens? This course is designed to have participants tackle this critical question head-on. In this 30-minute course, we will define bloodborne pathogens, discuss risk exposure, outline how to develop and implement a robust bloodborne pathogen exposure control plan.



CONFINED SPACE AWARENESS BASICS

How do you know whether the space you are entering presents a danger to you? This class is designed to give you information on what to look for to determine whether the confined space is dangerous or not. In this two-hour course, we will identify and classify types of confined spaces and discuss responsibilities of the confined space entrant, attendant and supervisor.



CRANE SAFETY FOR CONSTRUCTION

In this one-hour course, we will explore crucial topics including maintenance, inspection, safe operation and outline certification requirements necessary for crane operation. Participants will be equipped with the basic knowledge, skills and responsibilities of lifting personnel, to contribute to a safer work environment. According to OSHA, additional certifications and training may be required before operating a crane.



EFFECTIVE STRATEGIES FOR MULTIGENERATIONAL TEAMS

As an employer, do you understand and appreciate the diverse perspectives and strengths that each generation brings to the table? In this one-hour course, we will identify generational similarities and differences, discuss how to appreciate generational differences and provide tips for leaders to guide a multigenerational workforce.



ELECTRICAL SAFETY

Are you aware of proactive measures you can take to eliminate electrical injuries? In this one-hour course, we will identify key factors influencing electrical injuries, observe common workplace electrical hazards and discuss control methods to implement safe work practices.



FALL PROTECTION ESSENTIALS

Did you know falls have been the leading cause of fatalities in construction work for years and the most frequently cited violation by OSHA? Fortunately, advancements in technology have made it possible to protect employees working at heights in any situation. In this 90-minute course, we will discuss OSHA's requirements for safeguarding employees at heights, identify fall hazards, discuss the hierarchy of controls and review passive and active controls.



FIRE PROTECTION AND EMERGENCY ACTION PLANS

Are you equipped with the fundamental concepts and components of an Emergency Action Plan (EAP) and a Fire Protection Plan (FPP)? In this one-hour course, we will outline the core component of EAPs and FPPs and gain a deeper understanding of OSHA requirements associated with these critical safety measures.



HAND AND POWER TOOL SAFETY

Hand and power tools are a major cause of both serious physical injuries and health hazards. In this one-hour course, we will identify common hazards and discuss controls to promote hand and power tool safety. If you are an employer, you may be surprised by what OSHA has to say about your employees' hand and power tools.



HAZARD COMMUNICATION

Did you know that the Right to Know Standard exists for your safety? The hazard communication program is meant to protect employees from being exposed to chemicals and, if they are, know how to keep the chemical from causing harm. In this one-hour course, we will outline the Hazard Communication Standard, also known as the Right to Know Standard, and review chemical hazards, safety data sheets, container labels and best practices for hazard communication.



HEALTH HAZARDS AND SAFETY ESSENTIALS

Did you know that on average, 200 rattlesnake bites occur in Colorado per year? This is just one of many health hazards employees face on a regular basis. In this one-hour course, we will identify common workplace health and safety hazards, discuss protective measures, review employer responsibilities as required by OSHA and outline employer training requirements.



It is important that you know about the chemicals you are exposed to. Your employer has rules put in place to protect you and to prevent you from being exposed to hazardous chemicals. Be sure to communicate with your employer as soon as possible if you have been exposed to a chemical, and then seek medical attention.



INCIDENT INVESTIGATIONS

Are the same incidents occurring at your organization over and over again? Discover how investigations can be used as a learning tool to identify causal factors of an incident. In this 30-minute course, we will outline how to use incident investigations as a learning tool to improve the system, discuss the importance of being open to multiple causal factors and define human error as a symptom not a cause of incidents.



INTRODUCTION TO HUMAN AND ORGANIZATIONAL PERFORMANCE (HOP)

What is HOP? A safety approach that recognizes how employees and processes influence each other. HOP isn't just another program or set of rules to follow. It's a mindset, a way of thinking about work and its impact on people and processes. In this 30-minute course, we will outline the five principles of HOP and discuss how to implement these principles to help your organizations achieve better results.



INTRODUCTION TO OSHA

Should everyone be concerned with OSHA requirements? Yes. All employees contribute to creating a proactive, safe and healthy work environment. In this one-hour course, will discuss OSHA's mission, individual rights, employer responsibilities, standards, inspection procedures and resources available employees.



LEADING WITH C.A.R.E.

Did you know demonstrating care and concern for employees creates a foundation for organizational improvement efforts? In this one-hour course, we will discuss how leading with care can decrease workplace injuries, create better operational outcomes and improve employee morale. We will introduce topics of Just Culture and Total Worker Health and provide participants with actionable steps to immediately put into practice to drive the improvements they seek.



LOCKOUT TAGOUT ESSENTIALS

Did you know before providing service or maintenance on a piece of equipment, you should always check that the energy has been locked out of the machinery in order to prevent dangerous consequences such as the loss of a body part or the loss of life? In this two-hour course, we will identify best practices to safeguard workers from an unexpected startup of machinery or the release of hazardous energy during service or maintenance.



MANAGING SAFETY AND HEALTH PROGRAMS

Is your safety program producing the results you want? In this one-hour course, we will outline step-by-step procedures to create an effective safety program, discuss how to lead from the top down and provide tips on how to engage your employees in a safety program to reduce accidents and save money.



MANUAL MATERIALS HANDLING

Musculoskeletal injuries cost Colorado employers millions of dollars every year in medical treatment, disability benefits and disruptions to their operations. In this 30-minute course, we will define the role ergonomics can play to prevent these injuries, discuss the basics of neutral posture, identify the main risk factors and discuss how to control these risk factors.



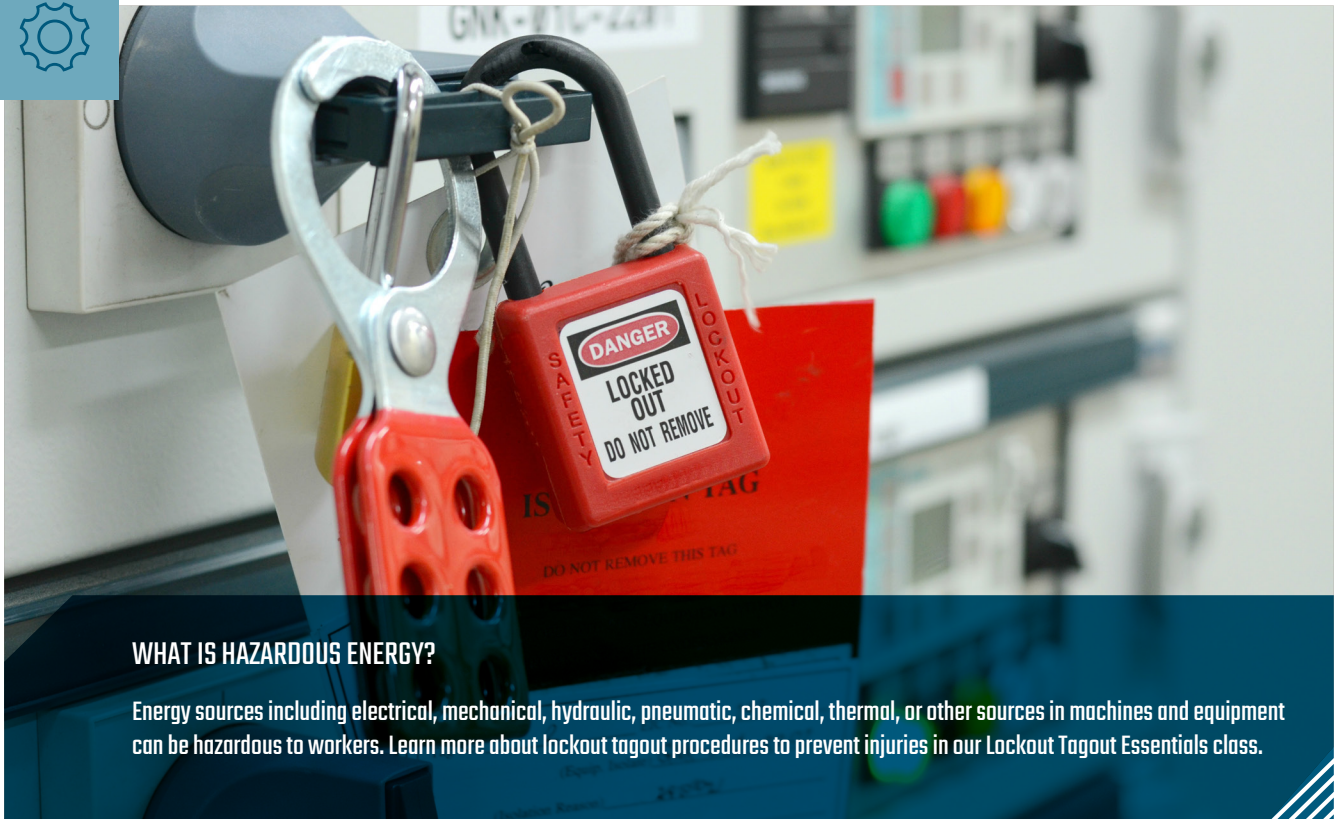
OFFICE ERGONOMICS

Do you know the ergonomic fundamentals required for evaluating employee workstations? In this two-hour course, we will identify incorrect posture, discuss how to reduce repetitive motions and improve employee efficiency through workstation modification. Upon completion, attendees will receive an office ergonomic checklist to assist with identifying ergonomic risk factors and correct actions.



OPTIMIZING PRODUCTIVITY

Are you curious about why you might be more tired at certain times of the day? This course will help you identify hidden patterns of daily life to increase your mood and productivity at work. In this 30-minute course, we will identify productivity patterns, identify when to complete certain activities throughout the day to promote safety and create a plan to manage and track daily productivity.



WHAT IS HAZARDOUS ENERGY?

Energy sources including electrical, mechanical, hydraulic, pneumatic, chemical, thermal, or other sources in machines and equipment can be hazardous to workers. Learn more about lockout tagout procedures to prevent injuries in our Lockout Tagout Essentials class.



OSHA RECORDKEEPING

Are you preparing to submit your annual injury and illness logs to OSHA? In this 90-minute course, we will outline the key elements of OSHA Standard 1904 and how to make it part of an effective safety program, discuss the purpose and scope of OSHA's Standard 1904, Recording and Reporting Occupational Injuries and Illnesses, and clarify what documentation is required.



PERSONAL PROTECTIVE EQUIPMENT ESSENTIALS

Do you know exactly what types of personal protective equipment an employer is required to pay for and what PPE employees are expected to provide for themselves? In this one-hour course, we will review common types of PPE, outline requirements for its use according to OSHA, identify who is responsible for payment of PPE and introduce the hierarchy of controls.



Which personal protective equipment is not providing enough protection in the photo?

- a. Eyeglasses
- b. Earplugs
- c. Footwear

Answer: B.

The earplugs in the photo are not fully inserted in the ear to provide proper hearing protection.



RESPIRATORY PROTECTION

Do you have the right respiratory controls in place? Why wait to be fined by OSHA to find out? In this one-hour course, we will outline and discuss best practices for each of the following requirements of an employer: assess respiratory hazards, implement a respiratory protection program, select the right controls or respirators, and conduct medical evaluations and fit testing.

FUNDAMENTALS OF SAFETY



SAFETY THROUGH EFFECTIVE LEADERSHIP

Successful business leaders empower their employees to make decisions, speak up about concerns and take ownership of the work they do each day. In this 30-minute course, we will discuss how to foster trust, practice active listening and demonstrate care and concern for employees to help build a culture of safety.



SCAFFOLDING BASICS

Did you know a scaffold needs to be able to support its own weight and four times the load you intend to put on the scaffold? If you don't follow the formula correctly, the scaffold could collapse and cause a fatality. In this 90-minute course, we will discuss how to safely erect and use scaffolding, and participants will build model scaffolds, identify dangers of scaffolding and outline best practices to comply with OSHA's scaffolding regulations.



SITUATIONAL AWARENESS

Situational awareness is important to everyone — it is important that everyone is aware of their surroundings and the potential hazards they face. It is also important that each individual is looking out for their own safety as well as that of their coworkers. Even the most experienced people can lack situational awareness — especially when doing tasks that have become routine. In this 30-minute course, we will test your situational awareness and discuss how to create habits that increase your situational awareness to detect hazards.



This was the first class I've ever been to and it's very informative. It's also very entertaining and fun. It's not a standard boring class. The instructors [Joel and Xavier] are very well suited for the class. I will be recommending this to anybody I come across."

SCAFFOLD SAFETY TRAINING PARTICIPANT



DID YOU KNOW?

Scaffolds have been in the top 5 of most cited OSHA violation in 2020, 2021 and 2022. When a scaffold accident happens it usually results in a fatality.



STAIRWAYS AND LADDERS

Elevate your safety knowledge about stairways and ladders by identifying practical strategies and techniques to mitigate risks and promote a secure working environment. In this 30-minute course, we will outline stairway hazards and requirements, discuss stairway-related risks and how to combat them, identify ladder hazards and requirements and discuss ladder-related risks and how to combat them.



STRUCK-BY HAZARDS

Did you know that struck-by injuries in the construction trade are becoming more common and serious that OSHA has made them part of their Focus Four emphasis program, otherwise known as the Fatal Four? In this one-hour course, we will discuss what constitutes a struck-by hazard, review common workplace hazards in both construction and general industry and identify controls to eliminate or reduce the hazard.



WALKING WORKING SURFACES

How do you ensure a workplace where every stride is secure and free from potential hazards? . In this one-hour course, we will identify slip, trip and fall hazards associated with walking working surfaces, outline best practices for hazard control and discuss how to implement these practices to meet employer requirements for worker protection.



It is important to not only recognize the risks presented by slip, trip and fall hazards, but to take action to prevent and remove the hazards before an injury occurs. Every employee should be empowered to use practical strategies to ensure a safe walking working environment.

TRENCHING AND EXCAVATION **BASICS**

Trench collapses, or cave-ins, pose the greatest risk to workers' lives. When done safely, trenching operations can reduce workers' exposure to other potential hazards, including falls, falling loads, hazardous atmospheres and incidents involving mobile equipment.



35+

Number of fatalities due to collapses in excavations in 2022.



5 ft.

Trenches deeper than 5 ft. require protective systems.



3,000 lbs

The weight of one cubic yard of soil.



1,000+

OSHA will perform trench inspections nationwide.



<3

Seconds workers can be buried in a trench collapse.



2 ft.

Keep materials away from the edge of the trench.



TRENCHING AND EXCAVATION

In 2022, there were at least 35 fatalities nationwide due to collapses in excavations. All of these collapses could have been prevented with protective systems in place.

In this two-hour course, we will outline best practices and OSHA requirements that protect employees on the job site, show how to recognize hazards of trenching and excavation, identify protective system requirements, and classify different types of soils.

◀ Xavier guides participants through hands-on activities to classify different types of soils to promote awareness and safety with trenches.



ADDITIONAL SERVICES

CUSTOM TRAINING AVAILABLE

Can't find what you need? Do you have a specific training that your employees need to complete?

We are able to create and schedule custom trainings to meet the needs of your employees and company objectives.*

For details, contact Joel Nobles at joel.nobles@pinnacol.com.

**Restrictions apply.*



CUSTOM TRAINING

Let our in-house design team create training that specifically meets the needs of your organization.



COST CONTAINMENT

Get certified to save even more, with lower claim costs and better injury prevention.



ONLINE TRAINING

Pinnacol's LMS, Safety Education Online, is available for all customers and offers a wide range of courses.



A lot of folks in the world believe safety is "simply not failing." Here at Pinnacol Safety Services, that couldn't be further from the truth. For us, safety is an enabler of performance across an organization — a power for good in ensuring not only that voices are heard but also that the work is truly understood.

WHAT IS INCLUDED IN ADVANCED SAFETY TRAINING?

Pinnacol’s Safety Services team now offers multiple learning opportunities to better serve our customers. The Advanced Safety Training topics consist of certified training courses for a more indepth training experience.

These courses typically span multiple days and are often pursued by attendees requiring a more advanced understanding of a topic or hazard. Our instructors utilize both classroom and hands-on training activities to engage audiences and test comprehension. Courses can be offered in English and Spanish. Many of our courses will provide certifications to help employees find work and employers win jobs.

TRAINING OFFERINGS	CERTIFICATE	DURATION	AUDIENCE*
COMPETENT PERSON AWARENESS		2 HOURS	EMPLOYERS
CONFINED SPACE AWARENESS		4/8 HOURS	ALL
FALL PROTECTION		4/8/16/24	--
FIRST AID CPR		4 HOURS	ALL
OSHA AUTHORIZED TRAINING		10/30 HOURS	ALL
TRENCHING AND EXCAVATION		2 HOURS	ALL

*Audience type: “Employers” describes anyone with leadership or safety responsibilities. “All” describes anyone involved or affected by this type of work.

For more information regarding the Advanced Safety Training offerings, contact Safety Education and Experience Specialist, Joel Nobles at joel.nobles@pinnacol.com.

FALL PROTECTION

At Pinnacol Assurance, we provide a safe environment in which participants can learn about, set up and test fall protection systems. Read further to learn more about why fall protection is important for your employees and to reference our training offerings on the following page.



DID YOU KNOW?

OSHA requires that fall protection be provided when someone is working above dangerous equipment and machinery, regardless of the fall distance.

WHY DOES OSHA HAVE A STANDARD FOR FALL PROTECTION?

Falls are among the most common causes of serious work-related injuries and deaths. Employers must set up the workplace to prevent employees from falling off overhead platforms or elevated workstations, or into holes in the floor and walls.



04

4-HOUR FALL PROTECTION AUTHORIZED PERSON ESSENTIALS*

This four-hour course offers an awareness of the issues involved with fall protection. A focus on the best practices in fall protection and the need to protect workers at heights highlight this informative training course. Participants are introduced to the regulations and standards governing fall protection as well as the components of a fall protection system, including body support, anchorages, connectors and rescue procedures.

08

8-HOUR FALL PROTECTION AUTHORIZED PERSON COMPREHENSIVE*

This one-day course includes everything discussed in the 4-Hour Fall Protection Authorized Person Essentials session and will go into more detail about common fall protection systems. In addition to the general principles of working safely at heights, this course will provide knowledge on the selection, setup and usage of fall protection systems.

16

16-HOUR FALL PROTECTION COMPETENT PERSON

This two-day course is appropriate for employees identified as a competent person; the training will enable the attendees to be responsible for the immediate supervision, implementation and monitoring of a managed fall protection program. Upon completion of this course, participants will receive a certificate recognizing they have met OSHA and ANSI requirements to be a competent person and competent inspector.

24

24-HOUR FALL PROTECTION EM385 COMPETENT PERSON

This three-day course is appropriate for employees identified as a competent person engaged in federal contract work. In this course, we will create practical solutions to difficult fall protection challenges that leverage appropriate tools and equipment. Upon successful completion of this course, participants will receive a certificate recognizing that they have met OSHA, EM385 and ANSI Z359.2 requirements to be a competent person.

ALL COURSES ARE LED BY A CERTIFIED EM385 FALL PROTECTION INSTRUCTOR.

✓

8-HOUR COMPETENT PERSON REFRESHER*

This one-day refresher course reviews the skill sets of a competent person and informs participants of updated regulations and fall protection solutions. Participants will expand their knowledge and ability to identify hazardous conditions, develop programs and make equipment selections to properly deal with fall hazards.

✓

8-HOUR EM385 COMPETENT PERSON REFRESHER

This one-day course is appropriate for employees identified as a competent person engaged in federal contract work. In addition to learning the content in the course description for the 8-Hour Competent Person Refresher, participants will receive a certificate recognizing that they have met OSHA, EM385 and ANSI Z359.2 requirements to be a competent person.

**Upon completion of this course, participants will receive a certificate recognizing they have met OSHA and ANSI requirements.*



CONFINED SPACE AWARENESS

How do you know whether the space you are entering presents a danger to you? This class is designed to give you information on what to look for to determine whether the confined space is dangerous or not. In this four-hour course, we will identify and classify types of confined spaces and discuss responsibilities of the confined space entrant, attendant and supervisor.



FIRST AID CPR

What would you do if you or another employee needed immediate medical treatment? Maybe the ambulance can get there in time, but maybe it can't, so you need to be prepared. In this four-hour course, we will outline how to promptly recognize several types of life-threatening emergencies, demonstrate how to perform high-quality chest compressions, discuss how to deliver appropriate ventilations, and practice using an automated external defibrillator.



TRENCHING AND EXCAVATION

Trench collapses, or cave-ins, pose the greatest risk to workers' lives. When done safely, trenching operations can reduce workers' exposure to other potential hazards. In this two-hour course, we will outline best practices and OSHA requirements that protect employees on the job site, show how to recognize hazards of trenching and excavation, identify protective system requirements, and classify different types of soils.



DID YOU KNOW?

The purpose of first aid is to minimize injury and future disability. In serious cases, first aid may be necessary to keep the victim alive until emergency medical services can arrive.

10

OSHA 10-HOUR CONSTRUCTION*

This two-day course helps employees identify workplace hazards found in construction and explore various topics that address the most common workplace injury causes. Participants will discuss OSHA Standard 1926 and identify how to minimize construction-related workplace hazards.

30

OSHA 30-HOUR CONSTRUCTION**

This four-day course is appropriate for supervisors or employees with some safety responsibility to identify workplace hazards found in construction; it will explore various topics that address the most common workplace injury causes. Participants will discuss OSHA Standard 1926 and identify how to minimize construction-related workplace hazards.

10

OSHA 10-HOUR GENERAL INDUSTRY*

This two-day course helps employees identify workplace hazards found in general industry and explores various topics that address the most common workplace injury causes. Participants will discuss OSHA Standard 1910 and identify how to minimize general industry workplace hazards.

30

OSHA 30-HOUR GENERAL INDUSTRY**

This four-day course is appropriate for supervisors or employees with some safety responsibility to identify workplace hazards found in general industry; it will explore various topics that address the most common workplace injury causes. Participants will discuss OSHA Standard 1910 and identify how to minimize general industry workplace hazards.

ALL COURSES ARE LED BY AN OSHA AUTHORIZED INSTRUCTOR.



OSHA INSPECTIONS

Why wait for an OSHA inspection to occur when you can get ready for it before the inspector ever shows up at your job site? In this one-hour course, we will describe the OSHA inspection process, outline your rights and responsibilities when working with OSHA, and discuss how to prepare for an OSHA inspection.



OSHA RECORDKEEPING

Are you preparing to submit your annual injury and illness logs to OSHA? In this 90-minute course, we will outline the key elements of OSHA Standard 1904 and how to make it part of an effective safety program, discuss the purpose and scope of OSHA's Standard 1904, Recording and Reporting Occupational Injuries and Illnesses, and clarify what documentation is required.

ALL COURSES CAN BE OFFERED IN ENGLISH OR SPANISH.

*Upon completion of this course, participants will receive their OSHA 10-hour card.

**Upon completion of this course, participants will receive their OSHA 30-hour card.

MEET THE INSTRUCTORS



JOEL NOBLES

SAFETY EDUCATION AND EXPERIENCE SPECIALIST

Joel Nobles is a vital asset to Pinnacol Assurance customers, assisting them with safety program development, training, establishing safety committees, problem framing, process improvement, hazard assessments and data analysis.

Nobles is a United States Air Force veteran, having spent nearly 10 years on active duty, leading teams and managing a Wing-level safety program, which stoked his desire to work in the field. He has guided aircraft maintenance squadrons and civil engineering squadrons through implementing and maintaining successful safety programs and assisted with numerous aircraft mishap investigations.

Nobles has a Master of Business Administration and a Bachelor of Science degree in occupational safety and health. He has his Occupational Safety and Health Administration Outreach Trainer certification as well as multiple certifications through the Board of Certified Safety Professionals, most notably the Certified Safety Professional designation.



XAVIER GONZÁLEZ

BILINGUAL SAFETY EDUCATION AND EXPERIENCE SPECIALIST

As a bilingual safety education and experience specialist for Pinnacol Assurance, Xavier González is passionate about building relationships and helping companies keep their employees safe so they can focus on growing their businesses.

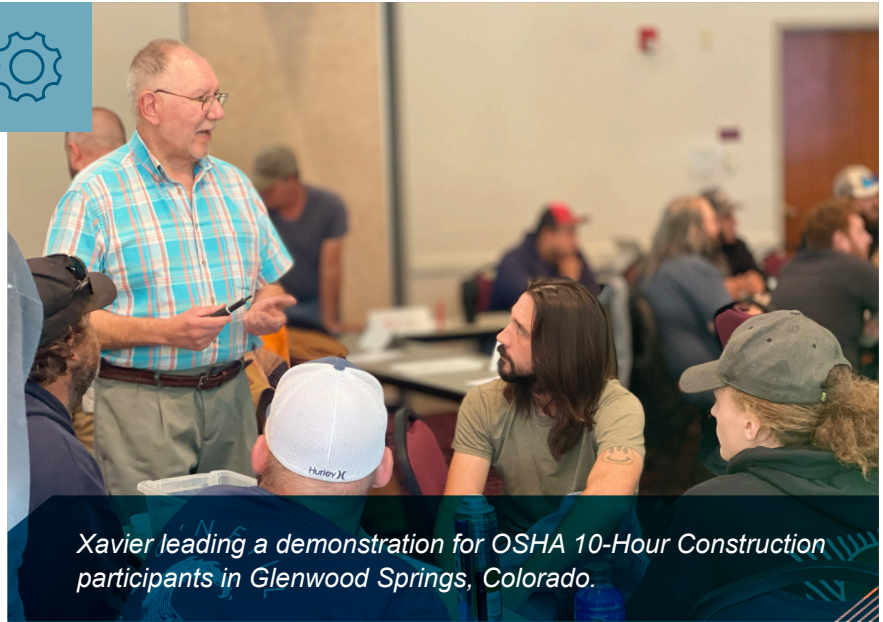
With 27 years of experience, González first gained his risk management chops in the legal field, working for a firm that prosecuted claims against manufacturers of faulty gas tanks in federal court. Later, his aptitude in financial and operational risk management served him well in the telecommunications, restaurant and mining industries.

González holds a bachelor's degree in legal assistance with a minor in finance. He also has a Certified Safety Professional certification from the Board of Certified Safety Professionals and an Associate in Risk Management designation, and is a certified Construction Health and Safety Technician.



We can tell [Xavier] knows his stuff and he really likes to share what he knows. He does a very good job of explaining things in a way that generates conversation."

OSHA 10-HOUR CONSTRUCTION PARTICIPANT



Xavier leading a demonstration for OSHA 10-Hour Construction participants in Glenwood Springs, Colorado.



It was a really good class. It was fun to be here. The instructors [Joel and Xavier] are really good. I thought the material was very well covered. I know in my class the teachers made it really fun to be there, and kept things moving and on topic. They answered all our questions when we had them. All around it was a really good experience and I really enjoyed it. "

OSHA 10-HOUR CONSTRUCTION PARTICIPANT



DID YOU KNOW?

Each of our instructors is OSHA authorized to teach OSHA-certified courses.

MEET THE INSTRUCTORS

Each customer is unique, and our diverse team of safety professionals is dedicated to supporting you throughout your safety journey. Our instructors are passionate about delivering curricula and creating hands-on scenarios that enable participants to manage risk at their job site.

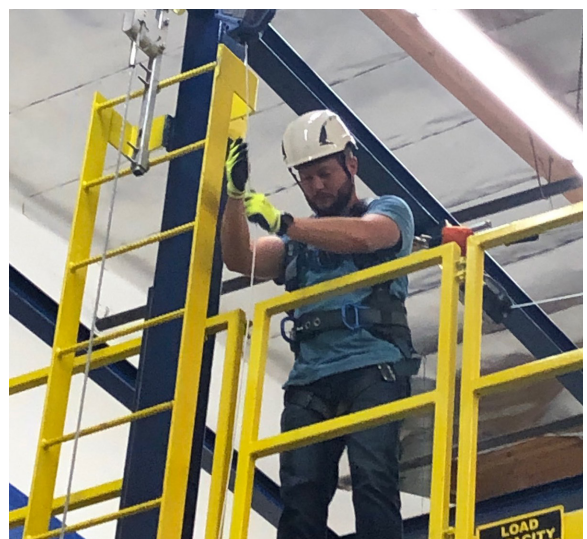


DID YOU KNOW?

Each of the instructors complete annual trainings to retain their certifications and create hands-on experiences for class participants.

ARE ALL TRAININGS HOSTED AT PINNACOL ASSURANCE?

Most trainings are hosted on-site at the Pinnacol Assurance offices located in Denver, Colorado. An additional training facility may be used for trainings that require access to specific training materials or parameters such as scaffold safety, confined space awareness, fall protection, etc.



We enable a revolution in caring through innovative risk intelligence that empowers our customers to do their best work every day.



Joel explaining excavation safety during an OSHA 10-Hour Construction course hosted in Grand Junction, Colorado.



The mission of the Safety Services Education & Experience team is to create an experience that services our customers and educates them to do their best work every day. Let us help you and your employees do their best work every day by participating in any of the courses offered by Pinnacol Assurance."

LORI WHITESIDES

SAFETY EDUCATION & EXPERIENCE MANAGER



DID YOU KNOW?

Our instructors will travel to your place of work or nearby locations to make training more accessible for class participants.

SAFETY.PINNACOL.COM

SAFETY EDUCATION AND TRAINING

BE ON THE CUTTING EDGE OF
SAFETY EDUCATION

PINNACOL
ASSURANCE
SAFETY SERVICES

SAFETY EDUCATION ONLINE

Are you looking to level up your safety training program? Look no further than Pinnacol's new Safety Education Online platform! You'll have access to a wide range of online lessons specifically curated for Colorado businesses.

IN-PERSON TRAINING

We work hard to ensure safety is a top priority at every organization. That's why we offer a comprehensive training program in both English and Spanish so everyone can stay safe. Our training is conducted by Safety Educational and Experience Specialists who have years of education and training under their belts. We know hands-on practice is key, so we offer interactive demonstrations to make sure everyone is confident in their abilities.

LIVE AND ON-DEMAND WEBINARS

In today's fast-paced work environment, it can often feel like we are chained to our desks, unable to find the time to expand our knowledge and skills. But fear not, there is a solution that allows you to break free from your desk and still stay ahead of the game. Introducing live and on-demand webinars – the ultimate learning tool tailored to fit your needs.

SCAN THE QR CODE



TO LEARN MORE



ARE YOU LOOKING TO LEVEL UP YOUR SAFETY TRAINING PROGRAM?

Introducing Pinnacol Assurance's new learning management system, Safety Education Online

SAFETY EDUCATION ONLINE

With our system, you now have access to a wide range of training courses, giving you the flexibility to enroll your employees whenever it suits you – no more scheduling conflicts, requesting points or waiting for approval. Each of these courses is already safety group approved and doesn't require points for access.



PROGRESS REPORTS

Easily generate reports to keep track of your team's progress and identify areas that may need additional attention.



24/7 ACCESS

Access a wide range of online courses in English and Spanish via a computer, tablet or smartphone.



HUNDREDS OF COURSES AVAILABLE

Choose from a variety of categories, including construction, general workplace safety, ergonomics, human resources and more.

LEARN MORE



**SIGNING UP IS EASY.
SCAN THE QR CODE TO FIND OUT MORE.**



Pinnacol Assurance
is Colorado's leading
provider of caring
workers' compensation."

PINNACOL
ASSURANCE