

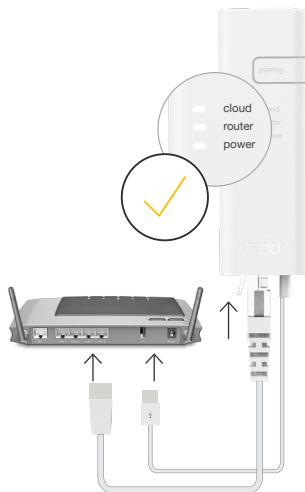


## Guide for Professional Installers

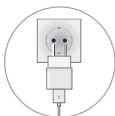
### Smart Radiator Thermostat Basic

If you are not a professional installer and want to install tado° yourself, get step-by-step instructions at **[tado.com/start](https://tado.com/start)**

## Connect Internet Bridge to router



## Connect Ethernet and USB cable



If no free USB  
connector available



## Press pairing button to activate pairing mode

To allow other devices to  
connect to the Internet  
Bridge

## 1 Pairing



## Remove the battery strip to activate the device



**Press the button for 3s  
to activate pairing**



2 min

**Pairing  
(up to 2 min)**



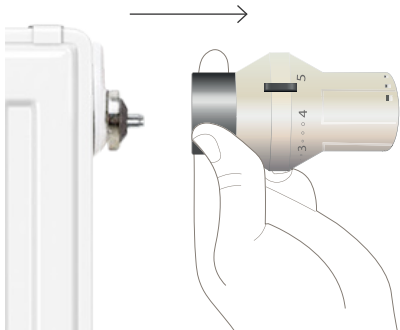
**Ready for mounting**

#### **Pairing Error**



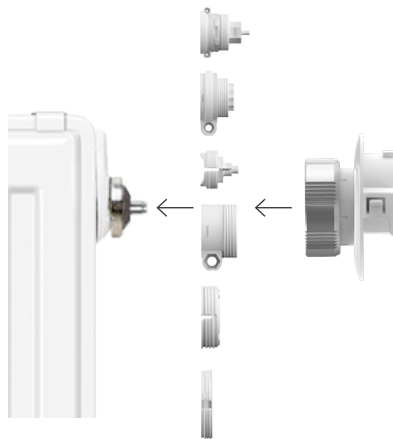
- Restart device by removing and putting back the batteries
- Restart pairing and keep 3 m distance between the Internet Bridge and device

## 2 Prepare mounting



**Unmount the existing thermostatic valve head**

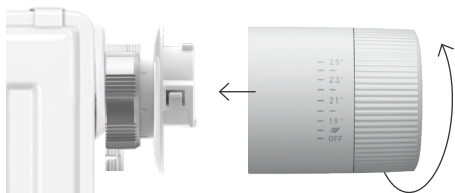
## 3 Mounting



**Attach the thermostat mounting bracket (an adapter may be required)**



Set display orientation



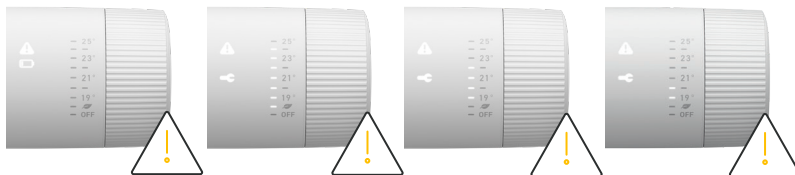
**Mount the Smart Radiator Thermostat head**



Calibrating (up to 1 min)



Calibration successful



#### Calibration Errors

- Remount thermostat head
- Check adapter mounting
- Check batterie

4

## Document locations of installed devices

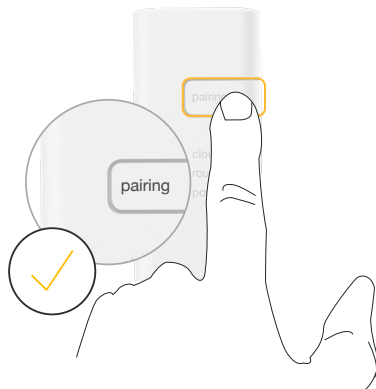


Sticker



Place sticker into the setup card and note down the device's location

## Deactivate pairing after the last installation



Press pairing button on Internet Bridge to deactivate pairing mode