



United Kingdom

Part 1 of 2



Smart Thermostat

230 V Relay Installations

Guide for Professional Installers

If you are not a professional installer and want to install tado° yourself, get step-by-step instructions at **tado.com/start**

Contents

Optional Accessory	5
1. Wiring	
Smart Thermostat Combi Boilers (Dry Contacts)	6
Extension Kit Combi Boilers (Dry Contacts)	7
Extension Kit S-Plan Setups (Switched Live)	8
Extension Kit Y-Plan Setups (Switched Live)	9
2. Connect Internet Bridge to Router	10
3. Pair Extension Kit with Internet Bridge	11
4. Pair Smart Thermostat with Internet Bridge	12
5. Configuration	14



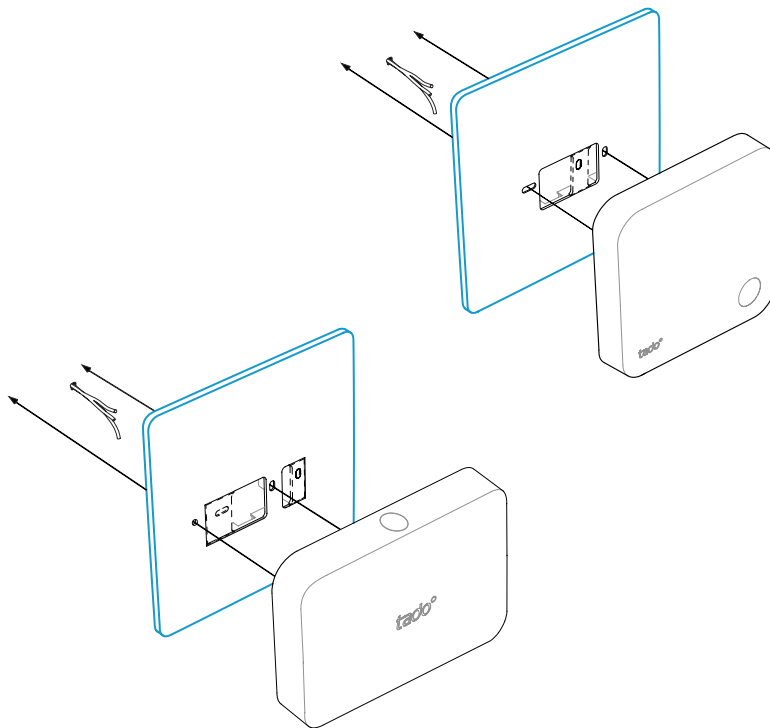
Do not use the tado° relay to switch the main electrical supply to the boiler!



CAUTION: High voltage cables

Make sure to turn the power off before you start

Optional Accessory



Use the **tado° Trim Plate** behind the Smart Thermostat or Extension Kit if needed. This can be obtained separately at **tado.com/trim-plate**

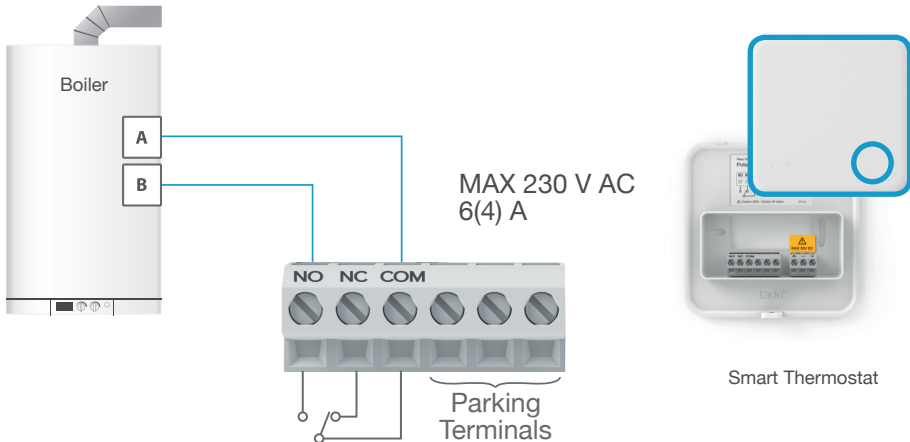
1. Wiring: Smart Thermostat

Combi Boilers (Dry Contacts)

Wired Setup: Smart Thermostat is wired directly to the boiler



Smart Thermostat



Smart Thermostat

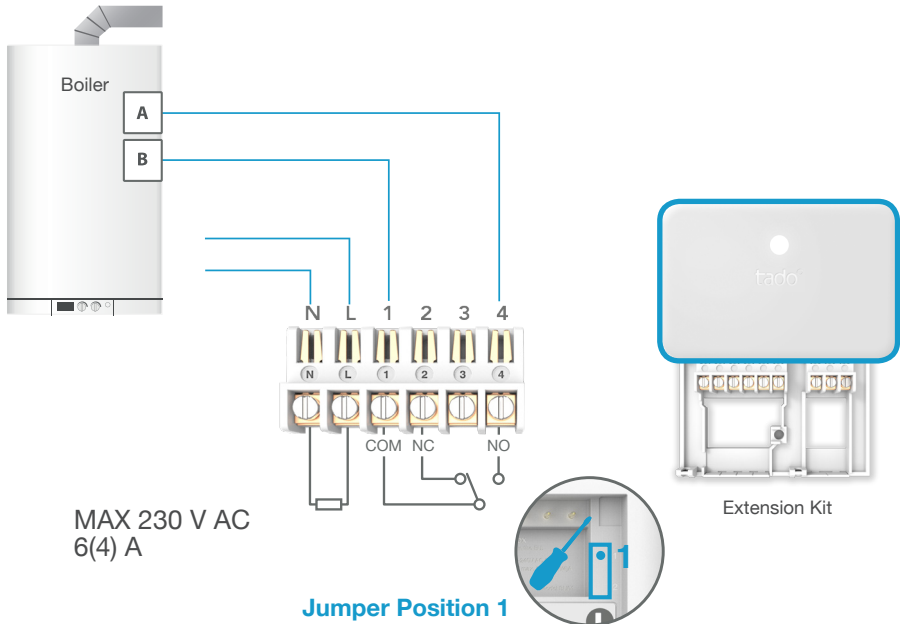


The Smart Thermostat can also be installed wirelessly when the Extension Kit is wired (p. 7-9)

1. Wiring: Extension Kit

Combi Boilers (Dry Contacts)

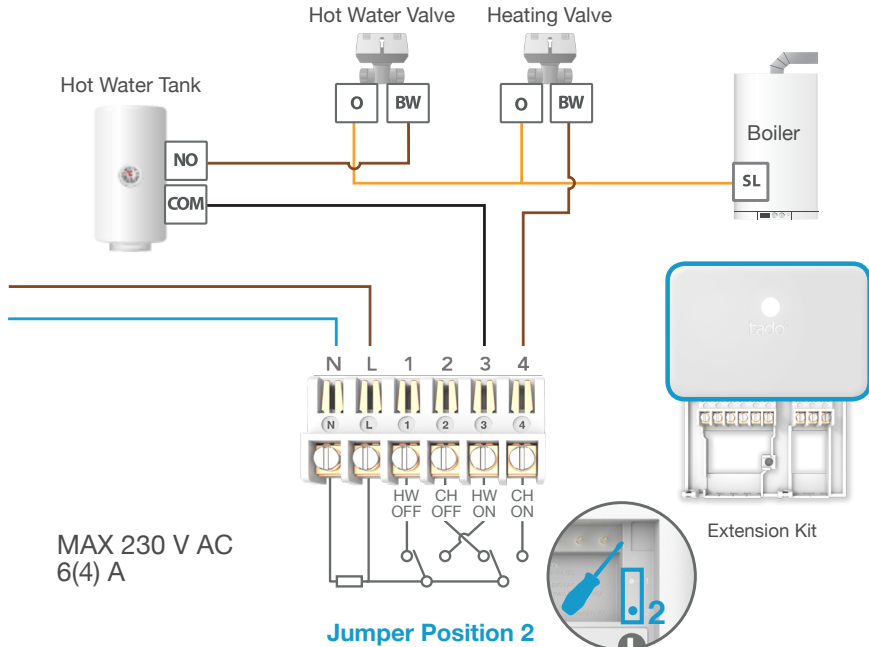
Wireless Setup: Smart Thermostat installed wirelessly with receiver



1. Wiring: Extension Kit

S-Plan Setups (Switched Live)

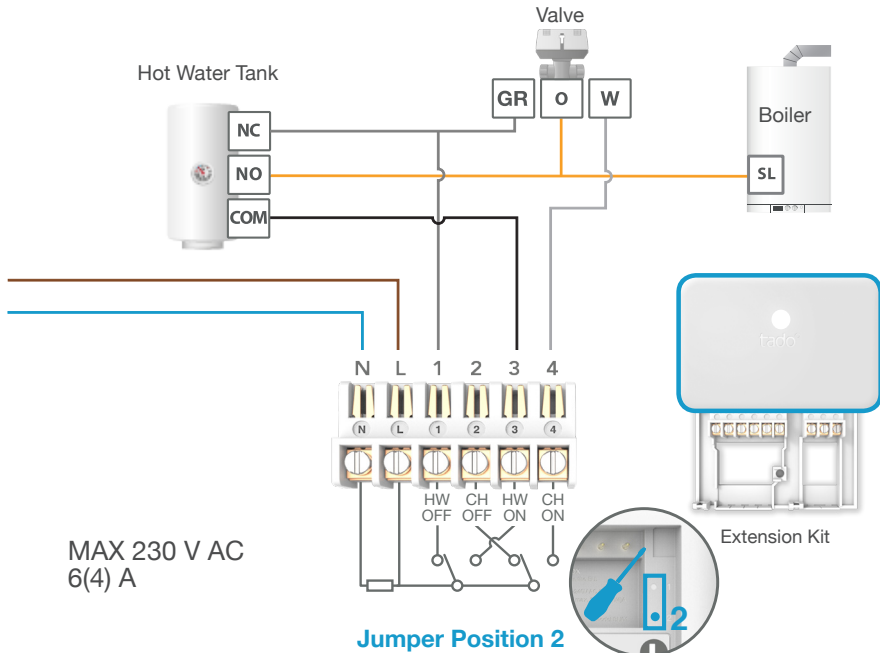
Wireless Setup: Smart Thermostat installed wirelessly with receiver



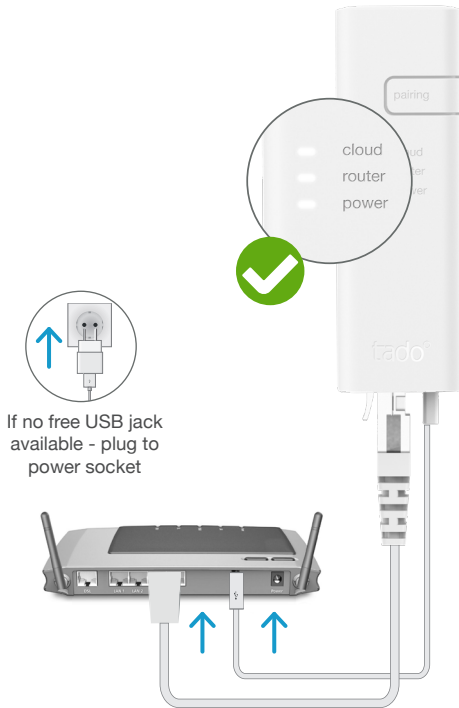
1. Wiring: Extension Kit

Y-Plan Setups (Switched Live)

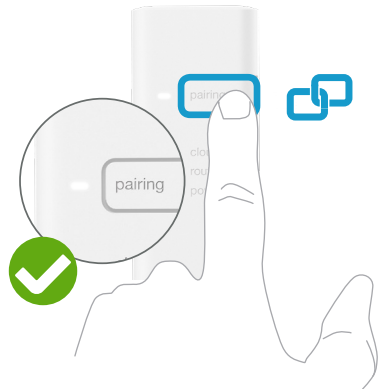
Wireless Setup: Smart Thermostat installed wirelessly with receiver



2. Connect Internet Bridge to Router



Connect Internet Bridge to router

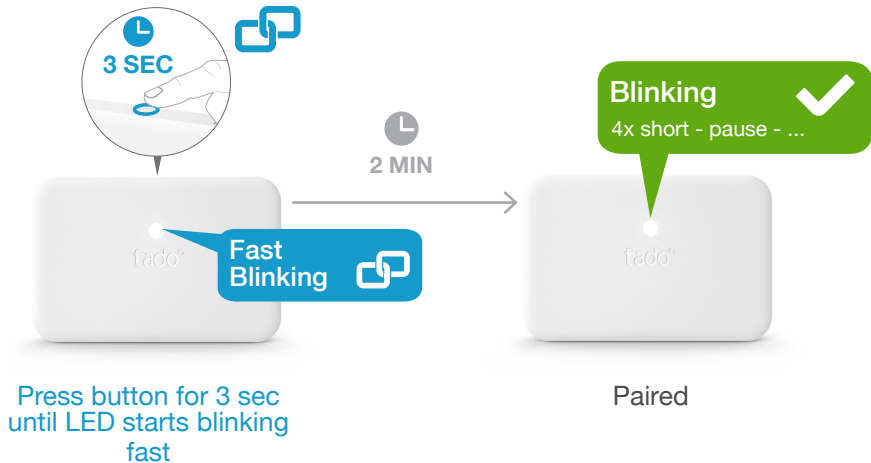
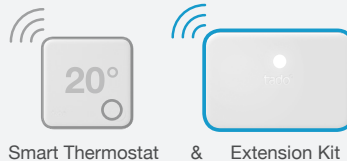


Press pairing button until the LED blinks to activate pairing mode

Pairing allows other devices to connect to the Internet Bridge

3. Pair Extension Kit with Internet Bridge

Wireless Setup: Smart Thermostat installed wirelessly with receiver



Blinking

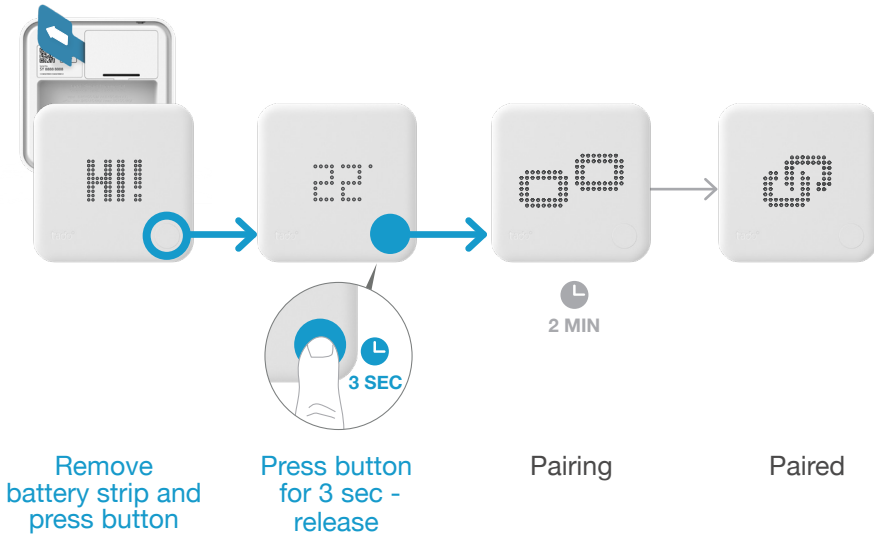
2x short - pause - ...



If failed:

Restart pairing and make sure that the distance between the devices is at least 3 m while pairing

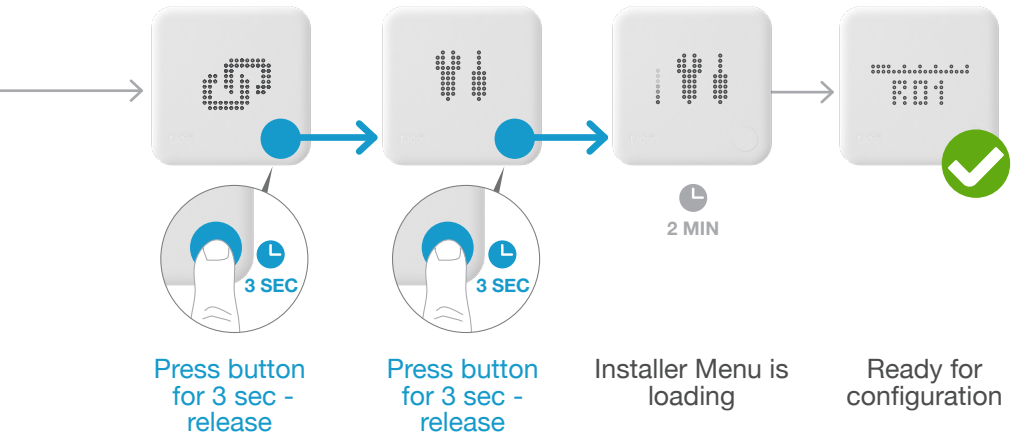
4. Pair Smart Thermostat with Internet Bridge



If failed:

- Press the button to clear the error
- Restart pairing and make sure that the distance between the devices is at least 3 m while pairing

Open Installer Menu



If failed:

- Repeat the process to open Installer Menu
- Make sure that the distance between the devices is at least 3 m while loading the menu

5. Configuration

Wired Setup:

Smart Thermostat is wired directly to the boiler



Smart Thermostat



Select
Relay
R01



Heating
Circuit
HC01



No
Hot Water
Control

Wireless Setup:

Smart Thermostat installed wirelessly with receiver



Smart Thermostat



& Extension Kit



Select
Temperature
Sensor
TS

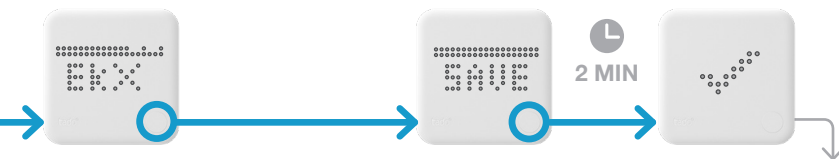


Heating
Circuit
HC01




Activate
Hot Water
Control

for S- and
Y-plan
wiring only



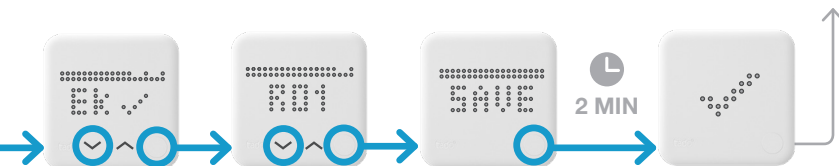
No
Extension Kit



Installation complete


1. Set the timer on the boiler to “always heating”
2. Test the system
3. Hand over the registration card to the customer

R01 for fully pumped systems
R02 for gravity-fed systems



Extension Kit
present

Select
Relay
R01 or R02



Configuration download active
after saving Installer Menu
(up to 2 min)



Get expert advice on the
tado° installer hotline:

 **020 3893 2159**

or at
tado.com/installers

