

FineStop[®]T Service

REMEDIAL FINES MIGRATION CONTROL

OVERVIEW

FineStop T service is based on a tackifying surface modification agent that renders the surface of the rock “sticky,” effectively stopping the migration of damaging fines into the near-wellbore region of the producing zone, providing several important benefits:

- » Maintains high production rates without the detrimental migration of formation fines, for a long period of time
- » Coats the rock surface, or proppant pack, causing it to become permanently tacky, to control intrusion of fines into the wellbore.
- » Stabilizes the formation/proppant pack interface in previously fractured wells, to reduce the intrusion of formation fines into the proppant pack.
- » Inhibits adverse geochemical precipitation to minimize the effect of diagenesis

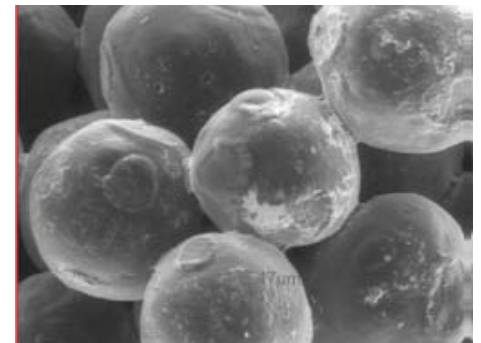
FineStop T service is a remedial fines migration control treatment for matrix applications, sand control completions, or to treat hydraulically fractured wells. The treatment can be bullheaded or pumped through CT or jointed pipe into the targeted zone. Once the system is placed, the well can be returned to production immediately, no need for shut-in time.

APPLICATIONS

- » Remedial fines migration control treatment for matrix applications, sand control completions, or hydraulically fractured wells
- » Can be pumped as a stand-alone treatment or as a tail-in of acid stimulation treatments
- » Can be bullheaded or pumped through CT or jointed pipe
- » Recommended for formations above 50 mD
- » FineStop T service helps control fines migration in CBM reservoirs

BENEFITS

- » Low viscosity fluid system (~5 cP)
- » High-flash point of 150°F (66°C)
- » No shut-in time required
- » Resistant to acid, H₂S, and CO₂ environments
- » Can be used up to 350°F (177°C)



FineStop[®]T service coats the rock surface, or proppant, making it permanently tacky to help control intrusion of fines into the wellbore.



Control Test



FineStop[™] T Service

FineStop[®] T service effectively controls fines during a step-up-rate test (from 10 to 320 mL/min) using a sand pack setup with 15% fines (200 mesh).

For more information, contact your local Halliburton representative or visit us on the web at www.halliburton.com

Sales of Halliburton products and services will be in accord solely with the terms and conditions contained in the contract between Halliburton and the customer that is applicable to the sale.

H014056 12/22 © 2022 Halliburton. All Rights Reserved.