

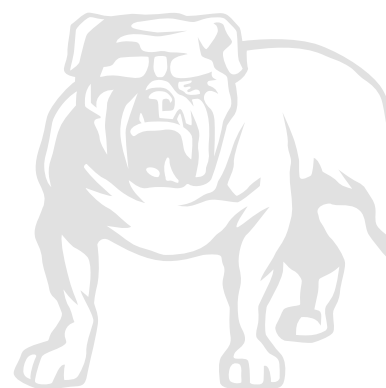


Mirka[®] ToolChanger

Automated tool changes of sanding and polishing heads

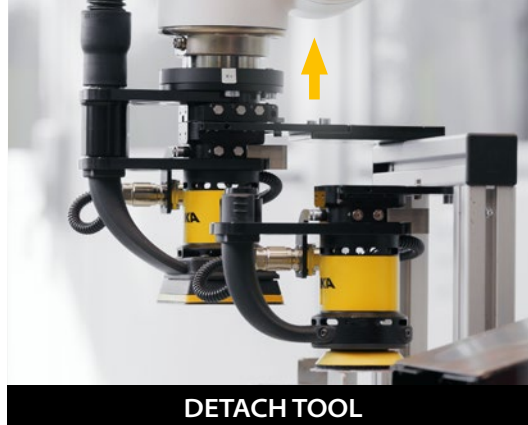
The goal is for your robot to assist you – not the other way around. With Mirka's ToolChanger, your industrial robot can independently perform automatic tool changes for AIROS sanding and polishing heads without additional power sources or complicated setups. You get a complete system for automated tool changes. It offers true plug-and-play functionality without any custom wiring and is the only tool changer system specifically designed for Mirka's robotic tools.

The ToolChanger consists of three main components: a module mounted to the robot arm, a connector attached to the sanding or polishing tool itself, and a tool holder where the robot connects and disconnects tools.





APPROACH



DETACH TOOL



ATTACH NEW TOOL

Mirka® ToolChanger

Automating tool changes leads to significant time and cost savings by eliminating the lengthy interruptions in the production process caused by manual swaps. This is no secret, it's well-known among system integrators, production engineers, and operators alike.

With Mirka's ToolChanger, you get a complete system for automated tool changes. It features an ISO 9409-1 compatible flange that can be adapted to fit any mechanical robot coupling and a mechanical locking mechanism that enables the robot to securely attach and detach the tools using its own movement, without the need for any additional energy source.

Key Features:

Plug-and-play simplicity

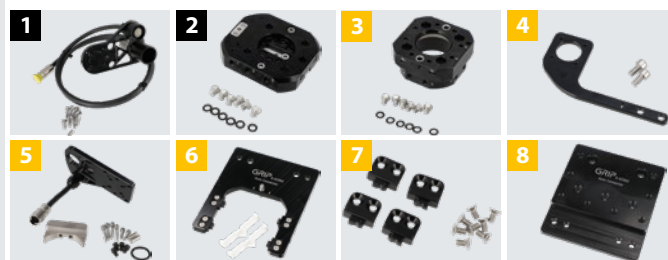
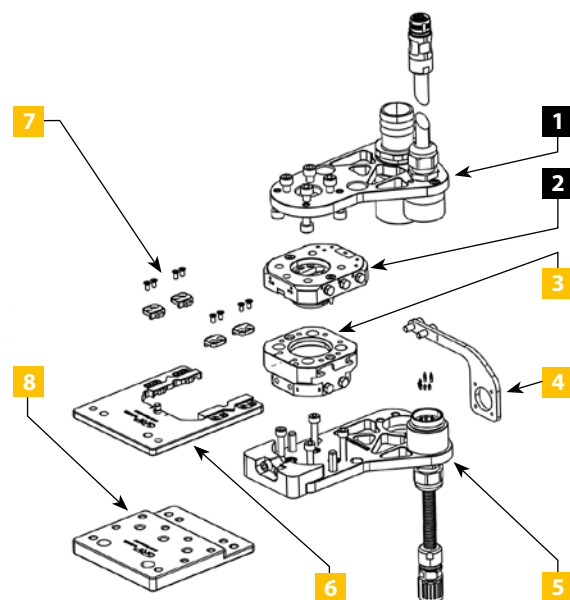
Installing and using the ToolChanger with Mirka's robotic sanders and polishers is easy, as the system features built-in electrical connections and offers full integration with robots and tools.

Robust and durable construction

Designed to endure harsh industrial environments, this unit, when installed properly, provides excellent resistance to wear, dust, and extreme conditions, ensuring reliable performance even in dusty settings.

Enhanced safety and reliability

The ToolChanger unit is equipped with fail-safe locking mechanisms to ensure safe, error-free tool changes, protecting both the equipment and operators.



TOOLCHANGER PARTS:

- Upper assembly, MTC1001011
- Lower assembly, MTC1002011

- 1 Upper Bracket Kit, MTC1020111
- 2 Upper Connector Kit, MTC1020411
- 3 Lower Connector Kit, MTC1020511
- 4 Cable Holder Kit, MTC1020311

- 5 Lower Bracket Kit, MTC1020211
- 6 Tray for ToolChanger, MTC1010611
- 7 Supporting Tab Kit, MTC1020811
- 8 Tray Extension, MTC1010711

The Right System for Improving Your Production

The ToolChanger is highly beneficial in several use cases. One common scenario is when users want a single sanding robot to switch between sanders that have abrasives of varying grits. This is an excellent way to maximise the full lifespan of the abrasive material, and an approach made possible by the ToolChanger.

The ToolChanger also enables the swapping of sanding or polishing tools for different tasks or sections midway through a surface finishing process. For instance, if you're sanding furniture or other items with both relatively large flat surfaces and more intricate, rounded sections, you'll achieve the best results by using the appropriate tool for each surface. With the ToolChanger, these kinds of tool changes are seamless.

Whether you are overseeing high-speed production lines or specialising in demanding precision tasks, the ToolChanger will speed up your workflow by enabling smooth, uninterrupted tool changes day in and day out.

For more
information
visit mirka.com
or scan the QR-code



Dedicated to the finish.