

# POLYSELECT® POWER SLURRY

SYNTHETIC  
POLYMER

POLYSELECT® POWER SLURRY is a dry synthetic polymer is used to stabilize soils during drilled shaft and trench construction.

POLYSELECT POWER SLURRY can also be used to inhibit clay and shale, increase clay and shale, and increase viscosity of water-based fluids.

	Specifications
Appearance	White free flowing granules
pH (0.15% solution)	7.5
Bulk Density	1.45 (as packaged)

## Directions for Use

Mix slowly into jet hopper or stream of water Idle mixing pump or use bubbler system after all material is added to system to reduce shear degradation.

Formation	lb/1000 gallons	lb/yd <sup>3</sup>
Clay/Shale	5	1
Fine/Medium Sand	7.5-10	1.5-2
Coarse Sand/Gravel	10-15	2-3

## Packaging

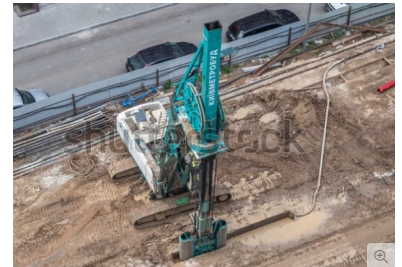
POLYSELECT POWER SLURRY is sold in 25lb plastic buckets and 55lb (25kg) multiwall paper bags.

## Applications/Functions

- Stabilize soils during shaft, borehole, or trench construction
- Increase viscosity
- Stabilize clay and shale
- Increase lubricity

## Advantages

- Easy to mix
- Quickly develops viscosity
- Rapid settling of cuttings
- Excellent clay/shale inhibition
- Non-fermenting and breaks down with addition of bleach



**Bentonite Performance Minerals LLC**

**A Halliburton Company**

3000 N. Sam Houston Pkwy E. Houston, TX 77032-3219

Phone: 281.871.7900

Email: [BPMsales@halliburton.com](mailto:BPMsales@halliburton.com)

[www.bentonite.com](http://www.bentonite.com)

Sales of BPM products and services will be in accord solely with the terms and conditions contained in the contract with BPM, its affiliates, and/or authorized distributors that is applicable to the sale ©2021 Bentonite. All Rights Reserved. POLY-SELECT® is a registered trademark of Halliburton.

Rev. 10/2021

