

POLYSELECT® POWER SODA ASH water conditioner is designed to reduce the calcium hardness and increase the pH of the makeup water utilized for drilling fluids.

	Specifications
Appearance	White to off-white powder
pH (5% aqueous solution)	11.5
Bulk Density	57-65

### Directions for Use

Mix slowly into jet hopper. Typical concentration of POLYSELECT POWER SODA ASH is .5 – 2lb per 100 gallons of water. For best results, add POLYSELECT POWER SODA ASH prior to the addition of bentonite or polymers. pH range should be maintained in the range of 8.5-9.5 and hardness should be less than 100 mg/l for typical bentonite-based drilling fluids.

### Packaging

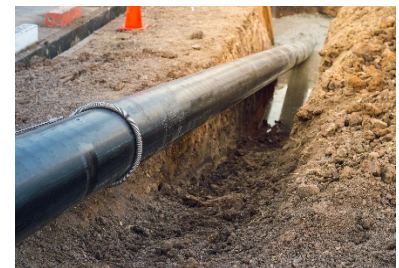
POLYSELECT POWER SODA ASH is sold in 50lb plastic buckets.

### Applications/Functions

- Reduce makeup water hardness
- Increase makeup water pH

### Advantages

- Increases bentonite and polymer effectiveness
- NSF/ANSI/CAN Standard 60 certified



**Bentonite Performance Minerals LLC**

**A Halliburton Company**

3000 N. Sam Houston Pkwy E. Houston, TX 77032-3219

Phone: 281.871.7900

Email: [BPMsales@halliburton.com](mailto:BPMsales@halliburton.com)

[www.bentonite.com](http://www.bentonite.com)

Sales of BPM products and services will be in accord solely with the terms and conditions contained in the contract with BPM, its affiliates, and/or authorized distributors that is applicable to the sale. ©2021 Bentonite Performance Minerals LLC. All Rights Reserved. POLY-SELECT® is a registered trademark of Halliburton. Rev. 10/2021

