

## HPHT Consistometer Automatic Model 422 Single Cell

### Description

Fann Consistometer Model 422 (single cell) is specifically designed to increase flexibility testing with an automated design, while measuring the thickening time of cement slurries in strict compliance with ISO requirements and API specifications. With high temperatures and pressures applied to the cement, it is possible to simulate a variety of conditions found in actual down-hole well cementing. This model has been tested to temperatures up to 400°F and pressures up to 22,000psi.

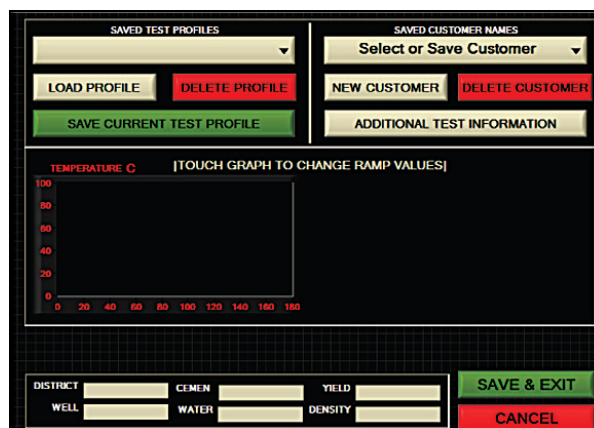
The Model 422 Automatic features a fully programmable multi-segment temperature, pressure ramps and hesitation squeeze. The 12-inch touchscreen displays the user-friendly software package which is compatible with Windows® \* operating systems. Included software features customizable graphs and variable data export. Its powerful magnetic drive technology allows for simple component inspection and replacement, and dual oil filters protect critical components while preventing premature failures. The classic potentiometer design is constructed with a Teflon® main body, and the API adherent slurry cup design follows the traditional slurry preparation routine. Safety features include over-circuit sensing relay monitors and protection against short circuits, thermocouple detection against runaway heater, rupture disc to protect against system over pressure, and fused circuitry.



### Advantages

- All parts interchangeable with other consistometers
- Computer control box separated from instrument for access to ports, repair, or upgrades
- Fast, automatic, time-programmable pressure vessel and oil reservoir cooling after test
- Simple calibration routines
- Compact design with easy serviceability
- Data exports to databases and spreadsheets
- Simple network setup and remote viewing
- Compare multiple live tests and print/export data
- UPS power can be installed
- User can change colors, labels, scales
- Adjustable, audible alarms for thickening time
- Extra large, viewable oil reservoir
- 22 inch color touchscreen
- Digital temperature, pressure, consistency indication
- Windows®, 180GB hard drive, Intel® Atom™ 1.6 GHz processor
- Rugged electronics
- No external computer required
- Worldwide service and parts delivery

*\*Windows is a registered mark of Microsoft Corp.*



## Specifications

Electrical	
Input Voltage	230 VAC ( $\pm 10\%$ )
Input Power	5500 W
Current	25 A
Input Frequency	50-60 Hz

Dimensions	
Height	66 in. (168 cm)
Width	24 in. (61 cm)
Depth	34 in. (86 cm)
Weight	600 lbs. (272 kg)

Air/Water Connections	
Water In/Out	1/4 MNPT (2)
Air Input	1/4 MNPT (1) (Max 120psi)

Magnetic Drive Unit	
Drive Motor	1/8 HP, 180VDC
Drive Speed	0-250 rpm

Heater	
Heater Power	5000 W
Heater Type	Internal Cast Rod Heater

Environmental	
Operating Temperature	32 -105 °F (0 - 40 °C)
Operating Humidity	0 - 95% non-condensing

## Ordering Information

Part No. 102538934 - Single Cell HPHT Pressurized Automatic Consistometer 22,000psi 400°F Model 422

*Fann Instrument Company offers a complete line of equipment, materials, and supplies for analyzing various drilling fluids and oil well cements in accordance with API Specifications and API Recommended Practices.*