

HPHT Pressurized Consistometer Model 415C

Description

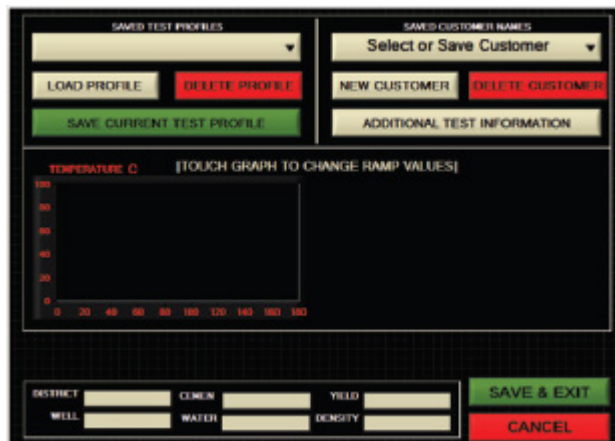
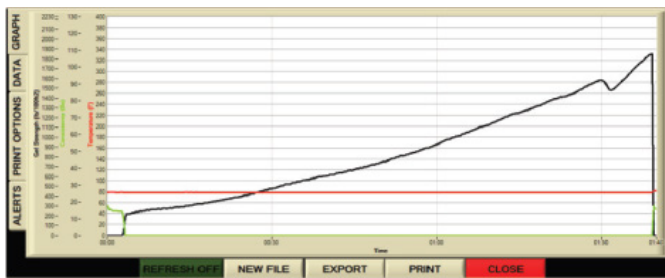
Fann Pressurized Consistometer is designed to perform thickening time tests in accordance with API specifications. Cement slurries are tested at temperatures up to 400°F and pressures up to 15,000 psig. The consistometer slurry cup assembly uses a rotating paddle and a stationary cylindrical slurry cup. The rotational force on the paddle is proportional to the consistency of the cement slurry and is measured through a servo drive computer. Consistency values, recorded in Bearden units of consistency (Bc), are indicated on a plot generated by the data acquisition system.

A solid heating/cooling jacket surrounds the slurry cup where a thermocouple is used to measure the cement slurry temperature. After completion of the test, cooling water is circulated through this cooling jacket to cool the pressure vessel. This consistometer is equipped with state-of-the-art temperature control and data acquisition systems that provide ease of use for the operator. Temperature control is programmed through the use of a touch screen monitor. A plot showing temperature, pressure and consistency may be plotted on any printer or shared through the computer.



Advantages

- Automatic cooling after test
- Below ambient temperature testing
- Microsoft® Windows® 7* OS with 180GB
- Easy cement ejection system
- Compact benchtop design
- Pressure consistency displayed in real time
- Gel strength option can be added
- Easily exportable data into text files
- Remote viewing capable via network
- Magnetic drive system
- No other computer needed
- *Microsoft and Windows are registered trademarks of Microsoft Corp.*
- 12in color touchscreen display
- Realtime networked data acquisition
- Electronics and plumbing easily accessible
- Thermocouple protection against runaway heater
- Overcurrent sensing monitors and protects against short circuits
- Rupture disc protects system overpressure
- Fused circuitry protects system
- Adjustable units of measure



Specifications

Electrical	
Input Voltage	230 VAC ($\pm 10\%$)
Input Power	1,500 W
Current	10 Amps
Input Frequency	50-60 Hz

Drive Unit	
Drive Unit	Baldor Servo
Motor Control	Baldor Servo Drive

Dimensions	
Height	33 in. (84 cm)
Width	26 in. (66 cm)
Depth	16 in. (41 cm)
Weight	125 lbs. (57 kg)

Heater	
Heater Power	1500 W
Heater Type	Cast Heater w/ Cooling Coils
Heater Control	SS Relay

Air/Water Connections	
Water In/Out	1/4 MNPT (2)
Air Input	1/4 MNPT (1) (Max 120psi)

Environmental	
Operating Temperature	32 -105 °F (0 - 40 °C)
Operating Humidity	0 - 95% non-condensing

Ordering Information

Part No. 102547776 - HPHT Pressurized Consistometer 15,000psi 400°F Model 415C

Fann Instrument Company offers a complete line of equipment, materials, and supplies for analyzing various drilling fluids and oil well cements in accordance with API Specifications and API Recommended Practices.