

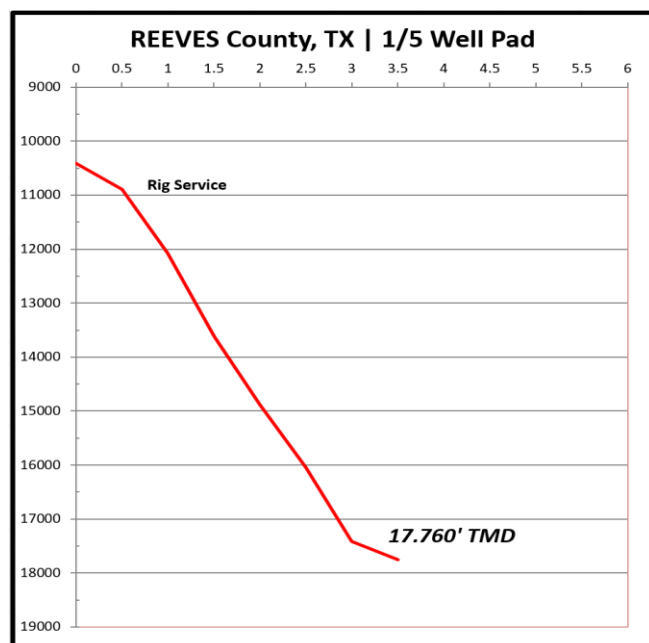
# Operator Drills 6¾" Lateral in One Run, Sets New ROP Record

## iCRUISE® INTELLIGENT ROTARY STEERABLE SYSTEM DRILLS 7,305' ONE-RUN LATERAL IN 51.76 HOURS

REEVES COUNTY, TEXAS

A major operator in the Delaware basin collaborated with Halliburton to drill 7,305' lateral section in one run with an average rate of penetration (ROP) of 142 fph. Listening to the operator's technical challenges, Halliburton delivered an engineered drilling solution utilizing 4¾" iCruise® intelligent rotary steerable system matched with a 6¾" GeoTech® GTi64DO drill bit, 5" StrataForce™ high-performance motor, and the INVERMUL® drilling fluid system.

The solution resulted in 54.4% increase ROP compared to what is normally achieved in that area and reduced well time by approximately three days (\$83k savings) over the course of the lateral section, helping the operator maximize asset value.



*iCruise® intelligent rotary steerable system.*



6.75" GTi64DO

Interval	Feet Drilled	Drilling Hours	Avg ROP (fph)	Total D&C Hours	Avg DLS
Lateral	7,305	51.76	142	69.96	1.3°/100

© 2020 Halliburton. All rights reserved. Because the conditions of use of this product are beyond the seller's control, the product is sold without warranty either express or implied and upon condition that purchaser make its own test to determine the suitability for purchaser's application. Purchaser assumes all risk of use and handling of this product. This product will be replaced if defective in manufacture or packaging or if damaged. Except for such replacement, seller is not liable for any damages caused by this product or its use. The statements and recommendations made herein are believed to be accurate. No guarantee of their accuracy is made, however.