

# Mobile Testing Package Enables Early Production

## MOBILE EXPRESS SURFACE WELL TESTING SYSTEM HELPS OPERATOR ACHIEVE PRODUCTION GOALS IN NEW FIELDS

NORTHEAST BRAZIL

### CHALLENGES

- » Accelerate production of development wells
- » Provide a fiscal metering solution until a permanent facility could be installed
- » Rugged terrain between wellsites

### SOLUTION

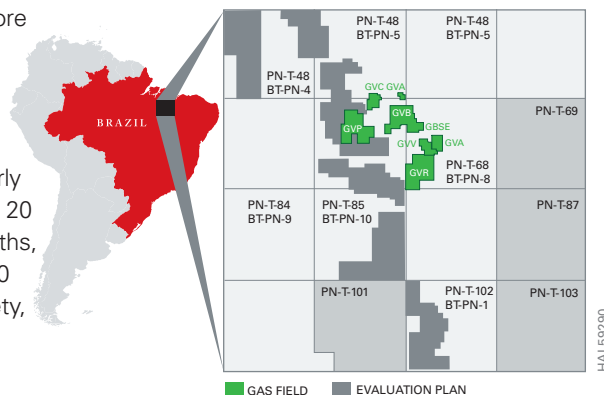
- » Utilize mobile facility to service 20 development wells

### RESULTS

- » Achieved more than 8,000 hours of work without any HSE or service quality incidents
- » Contributed to accelerate the increase on client's gas production capacity from 4.9 to 8.4 million cubic meters per day

### OVERVIEW

Halliburton successfully completed more than 100 monitoring transactions of custody transfer in nine months for a customer in northeast Brazil. By utilizing a mobile express surface well testing system, Halliburton enabled early production and cash flow generation of 20 development wells. In those nine months, Halliburton performed more than 8,000 hours of work without any health, safety, and environmental (HSE) or service quality incidents.



### CHALLENGES

Parnaíba Gás Natural S.A. operates in Maranhão State and is responsible for about 10 percent of all natural gas produced in Brazil. While some of its fields are equipped with permanent measuring equipment, some of its remote wells are currently using the mobile express surface well testing system.

Brazil's industry regulator, Agência Nacional do Petróleo, Gás Natural e Biocombustíveis, requires up-to-date production information comprising flow rates, densities, and volumes on each well every 42 days. In order to legally produce these remote wells, a metering solution was required.

### SOLUTION

Halliburton provided an intelligent and flexible solution to measure the custody transfer of these remote wells. Halliburton used its mobile express surface well testing system comprising a choke and three-phase separator mounted on a trailer, which proved ideal for traversing the rugged terrain in northeast Brazil.

In order to monitor the gas production wells in the portfolio, the Halliburton team had to operate its equipment 24 hours a day, seven days a week. In total, the team performed more than 8,000 hours of work in nine months, all without any HSE or service quality incidents.

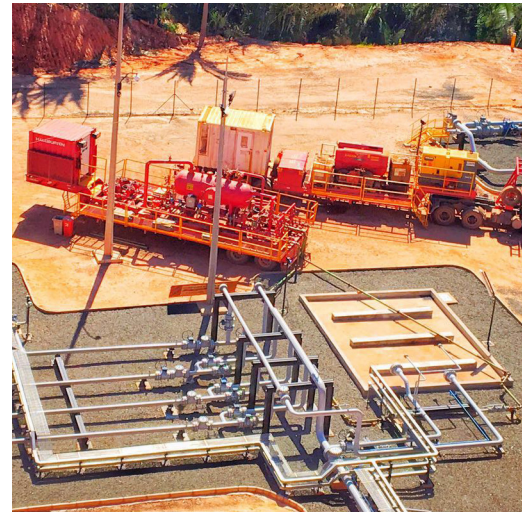
"The testing and measuring provided by Halliburton helped Parnaíba Gás to meet its challenging goals, accelerating production in new fields to reach a transfer high point of 8.4 million cubic meters per day."

## RESULTS

As of September 2016, Halliburton completed 100 monitoring transactions of custody transfer on more than 20 different gas production wells. Highlighting what he characterized as "the Halliburton commitment to excellence," Armando Ferreira, a Reservoir manager in Parnaíba Gás, said, "The testing and measuring provided by Halliburton helped Parnaíba Gás to meet its challenging goals, accelerating production in new fields to reach a transfer high point of 8.4 million cubic meters per day in July 2016 – it's a remarkable achievement, and I congratulate the teams."



Halliburton currently services about 65 percent of the wells for Parnaíba Gás Natural S.A. in the region.



The mobile express surface well testing system on location.

[www.halliburton.com](http://www.halliburton.com)

Sales of Halliburton products and services will be in accord solely with the terms and conditions contained in the contract between Halliburton and the customer that is applicable to the sale.

H012366 10/16 © 2016 Halliburton. All Rights Reserved.

**HALLIBURTON**