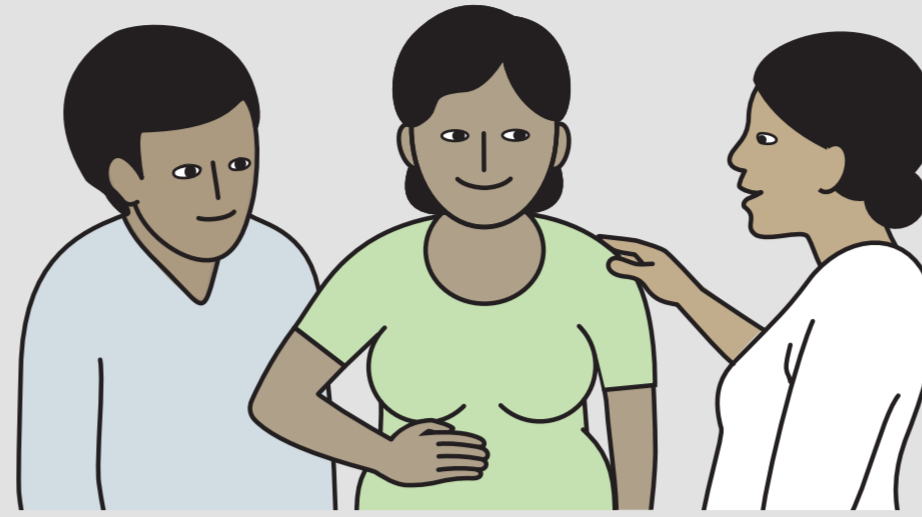


Essential Newborn Care 1

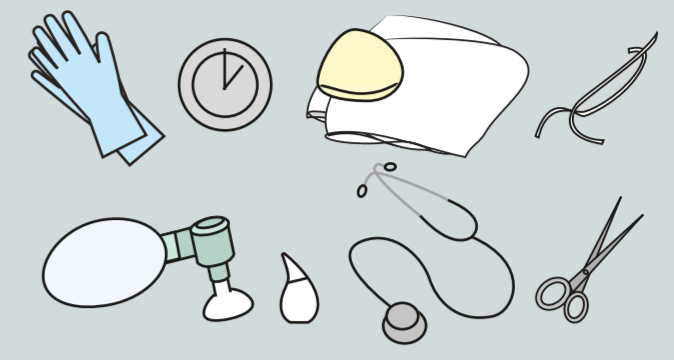
Immediate Care and Helping Babies Breathe at Birth



**Welcome mother and assess
Prepare for birth***

See Essential Childbirth Care

*Check equipment



Disinfect immediately after use

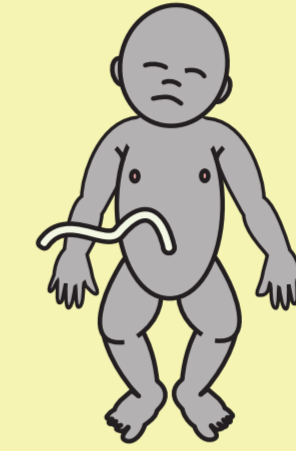
Baby born



Dry thoroughly
Crying/breathing?



Crying/
breathing well



Not crying/
not breathing well



**Keep warm
Check breathing**

Give mother
uterotonic



Breathing well



**Keep warm
Stimulate
Clear airway if needed**

Breathing?

Not breathing



**Call for help
Clamp and cut cord
Ventilate**

Breathing

**Clamp and
cut cord**

**Continue
skin-to-skin care
and monitor**

**Monitor
with mother**

Not breathing
No chest movement

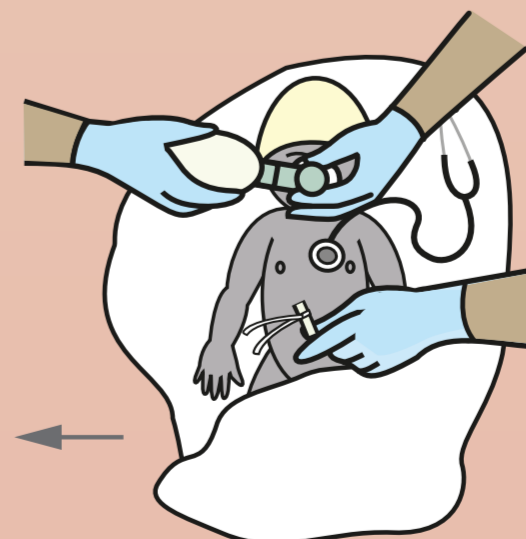
Improve ventilation

Breathing

Not breathing
Heart rate?



**Help initiate
breastfeeding**



Normal

Slow

Assessment and Continuing Care
See Essential Newborn Care 2

Not
breathing

**Continue ventilation
Decide on advanced care**

Record and use data - Provide respectful care - Prevent infection

The Golden Minute

60 sec