

Specification of Printed Matter

| | |
|-------------------------|-------------------|
| Product Name: | ECL&B Action Plan |
| 1. Functionality | Wall poster |

| | |
|-----------------|---|
| 2. Press | Description |
| Color | 4+0 CMYK |
| Paper type | Silk |
| Paper weight | 150g/m2 +/-5 mat (Optional: laminated (10my) on both sides) |
| Paper color | White |

| | |
|-------------------------|------------------------------------|
| 3. Post press | Description |
| Number of pages | 1 |
| Size with product gross | L 560 mm x H 1200 mm |
| Laminated | Yes (optional) |
| Laminate type | Mat laminate (10 my) on both sides |

| | |
|-------------------------|----------------------|
| Product Name: | ECL&B Provider Guide |
| 1. Functionality | Provider Guide |

| | |
|---------------------|--------------------|
| 2. Press | Description |
| Color | 4+4 CMYK |
| Paper type jacket | Gloss |
| Paper type insides | Gloss |
| Paper weight jacket | 130g/m2 +/-5 |
| Paper weight inside | 105g/m2 +/-5 |
| Paper color | White |

| | |
|------------------------------------|--|
| 3. Post press | Description |
| Number of pages (including jacket) | 72 |
| Size with Product Net | L210 mm x H148 mm (A5 landscape) |
| Size with Product Gross | L420mm x H148mm |
| Folding | Basics |
| Number of staples | 2 |
| Laminated | Yes (optional) |
| Laminate Type | Gloss (see additional information below) |

| | |
|----------------------------------|---|
| 4. Additional information | Description (see next page) |
| Laminate Type | (Film) laminate 10 my on frontpages of jacket, no lamination on insides |

| | |
|-------------------------|-----------------------------|
| Product Name: | ECL&B Facilitator Flipchart |
| 1. Functionality | Flipchart |

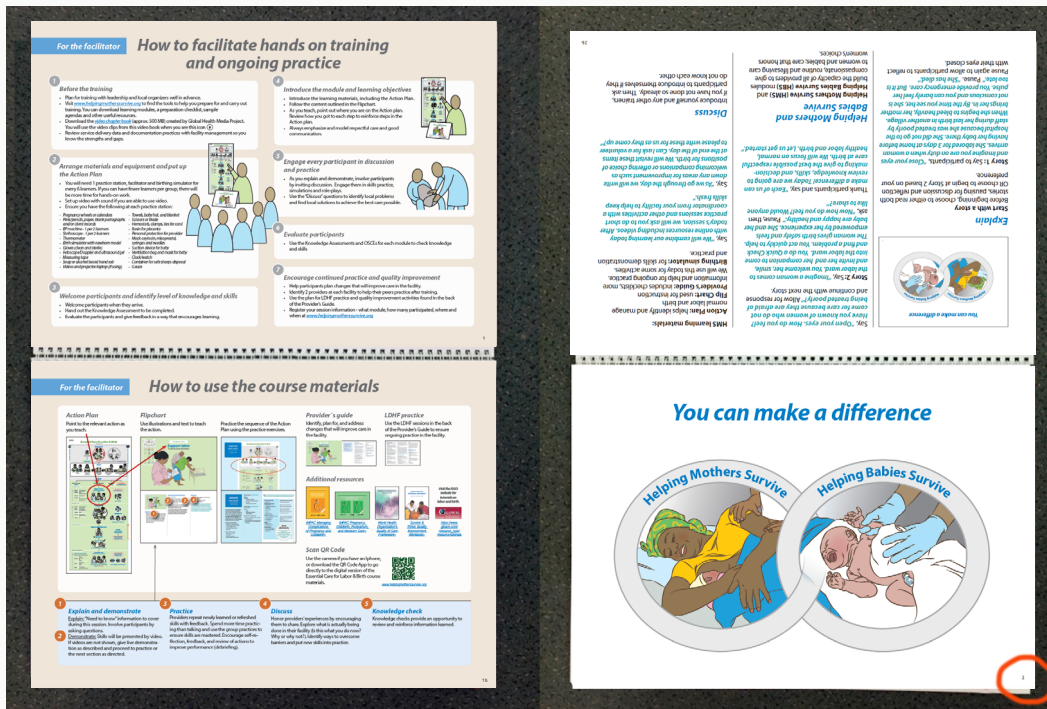
| | |
|----------------------|--|
| 2. Press | Description |
| Color | 4+4 CMYK |
| Paper type, jacket | 1 mm transparent stiff plastic sheet (front)* (or min. 2mm stiff cardboard) 2 mm transparent stiff plastic sheet (back)* (or stiff cardboard) |
| Paper type insides | Silk |
| Paper weight insides | 150g mat |
| Paper color | White |

| | |
|------------------------------------|--------------------|
| 3. Post press | Description |
| Number of pages (including jacket) | 66 |
| Size Inside | L420 mm x H292 mm |
| Size front jacket | L420 mm x H297 mm |
| Size back jacket | L420mm x H297mm |

| | |
|----------------------------------|--------------------|
| 4. Additional information | Description |
| Spiral | White metal |

4. Additional information: Page arrangement

Note that the direction of the first Flipchart page is different from the rest.
The finished product should look like this:



4. Additional information: Stand

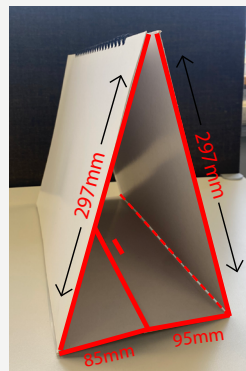
Version 1

Simple solution:
Finished product standing.



Version 2

Advanced, more stable solution when presenting:
Finished product standing.



| | |
|-------------------|---------------------|
| Size front jacket | L420 mm x H306,5 mm |
| Size back jacket | L420 mm x H306,5 mm |

— Cut
- - - Fold

