

Essential Newborn Care 1

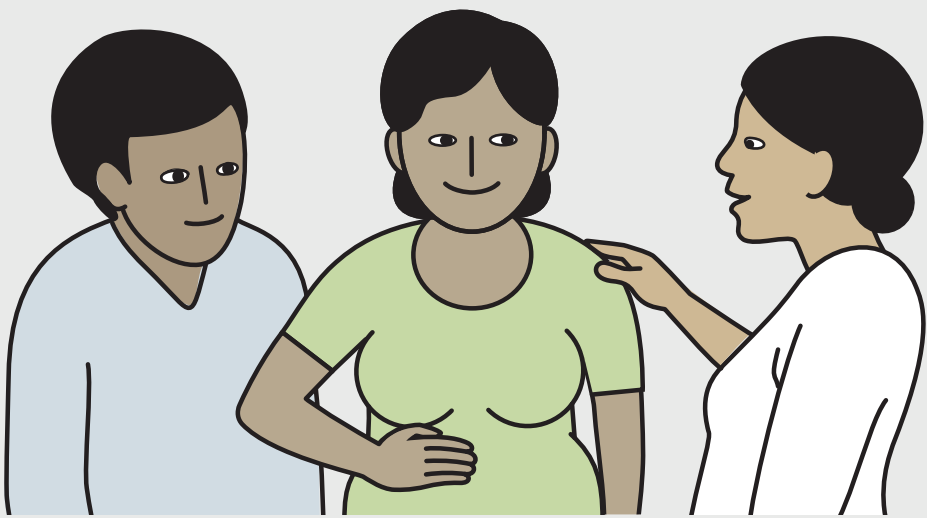
Immediate Care and Helping Babies Breathe at Birth

Record and use data – Provide respectful care – Prevent infection



The Golden Minute®

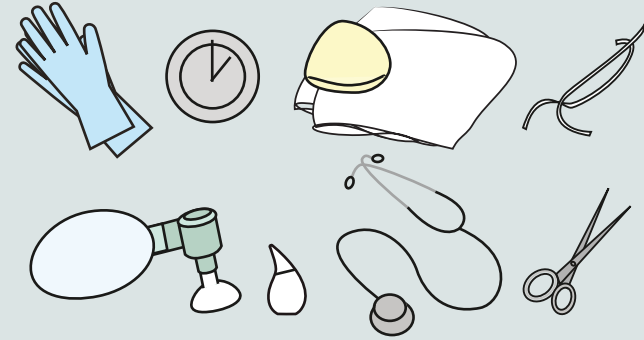
60 sec



Welcome mother and assess
Prepare for birth*

See Essential Childbirth Care

*Check equipment



Disinfect immediately after use

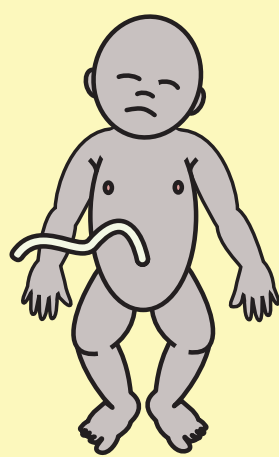
Baby born



Dry thoroughly
Crying/breathing?



Crying/
breathing well

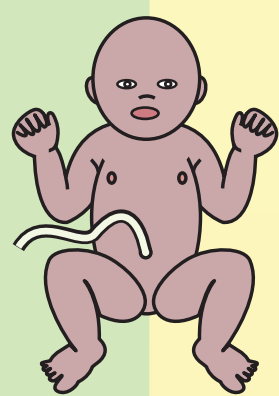


Not crying/
not breathing well



Keep warm
Check breathing

Give mother
uterotonic



Breathing well



Keep warm
Stimulate
Clear airway if needed

Breathing?



Not breathing

Call for help
Clamp and cut cord
Ventilate

Breathing

Clamp and
cut cord

Continue
skin-to-skin care
and monitor

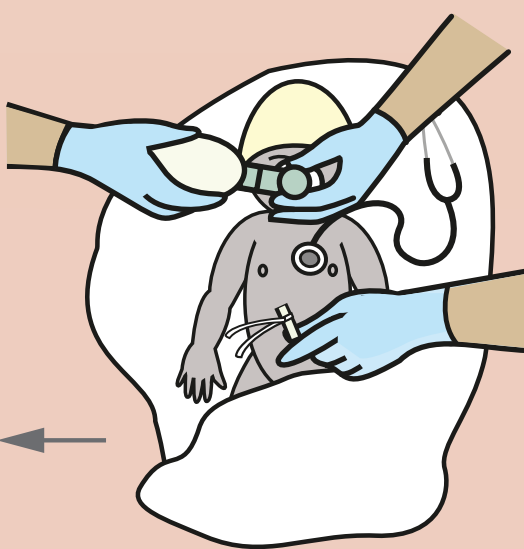
Monitor
with mother

Breathing

Improve ventilation

Not breathing
No chest movement

Not breathing
Heart rate?



Normal

Slow

Continue ventilation
Decide on advanced care

Help initiate
breastfeeding

Assessment and Continuing Care
See Essential Newborn Care 2

Not
breathing